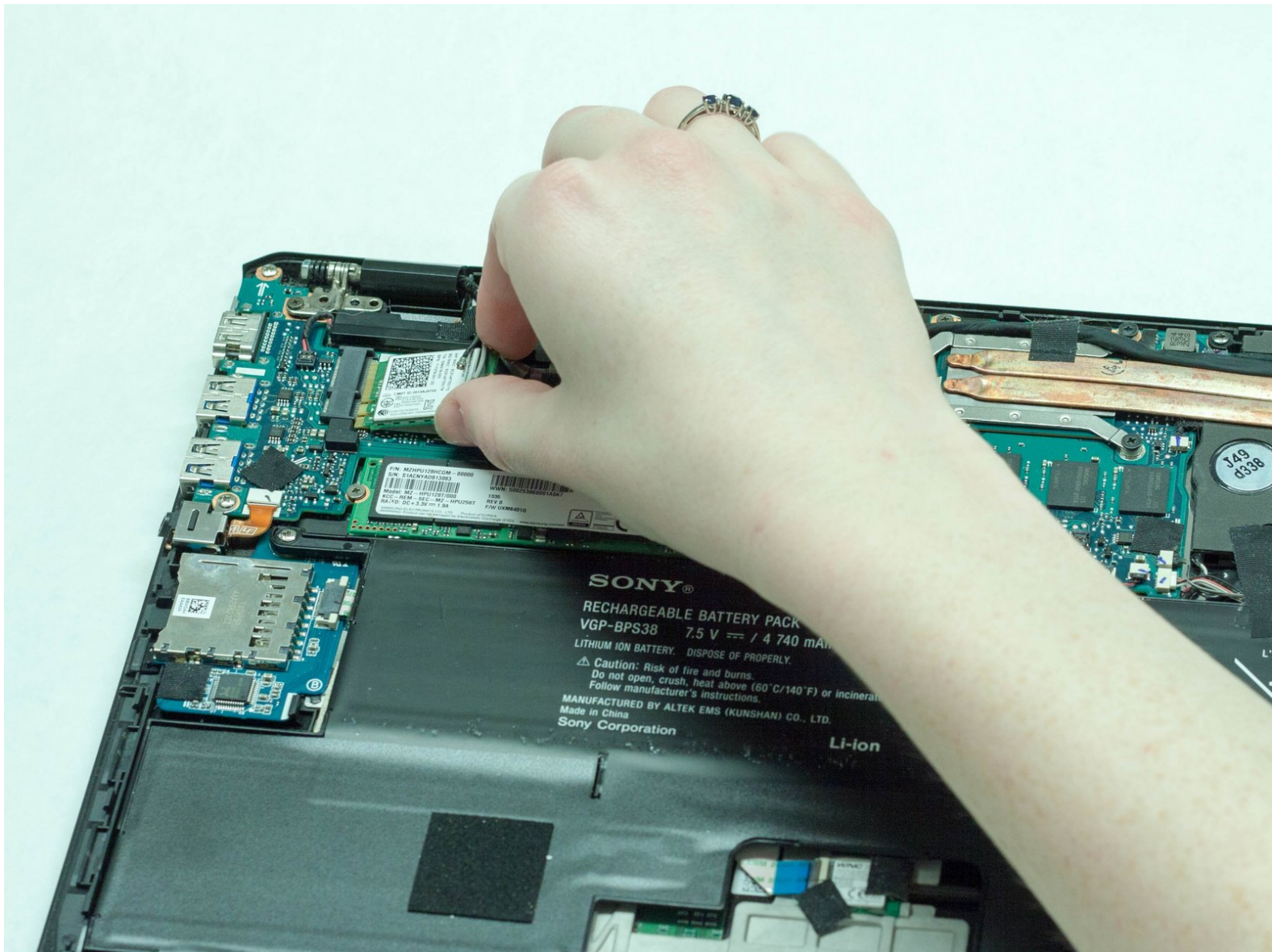




Sony Vaio Pro 13 WiFi Card Replacement

This guide shows the necessary steps to removing the WiFi card.

Written By: Alex R



INTRODUCTION

The removal of the WiFi card is very simple for even the least tech savvy people. The only tools necessary are a plastic opening tool such as a spudger and a Phillips #00 screwdriver. Once these tools are obtained, the steps are very easy to follow.



TOOLS:

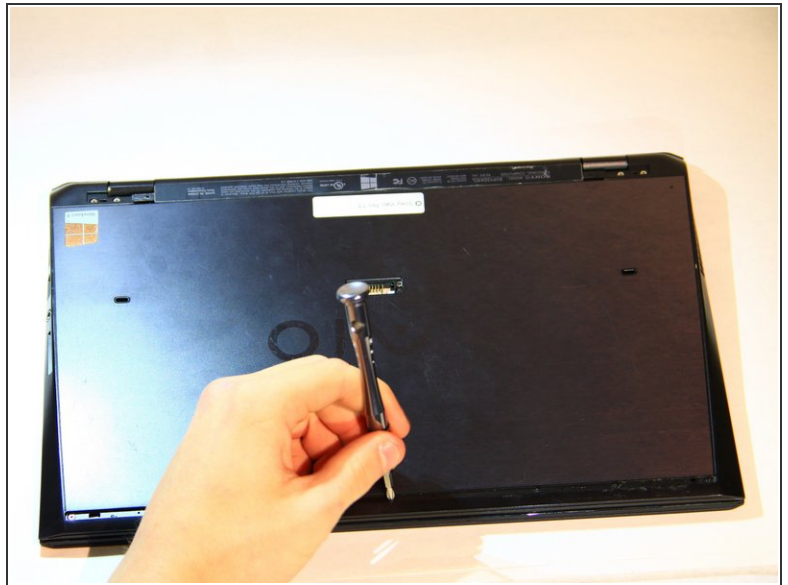
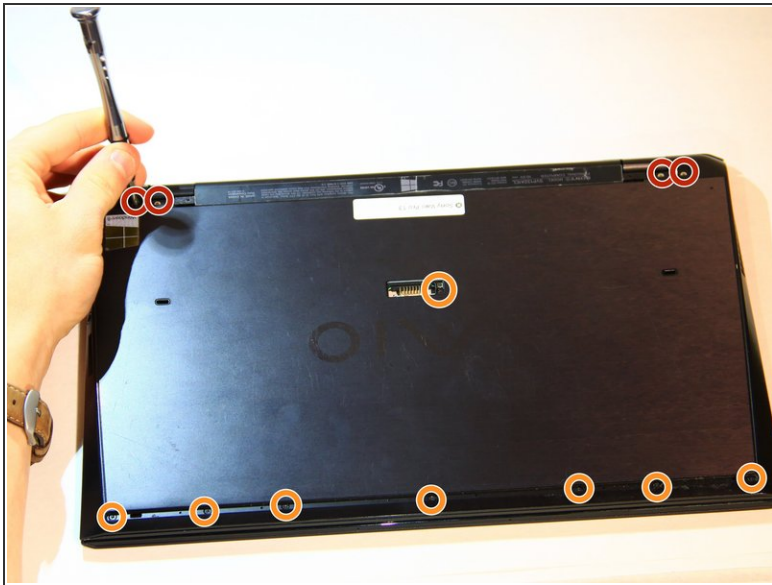
- [Phillips #00 Screwdriver](#) (1)
 - [iFixit Opening Tools](#) (1)
 - [Spudger](#) (1)
-

Step 1 — Bottom Cover



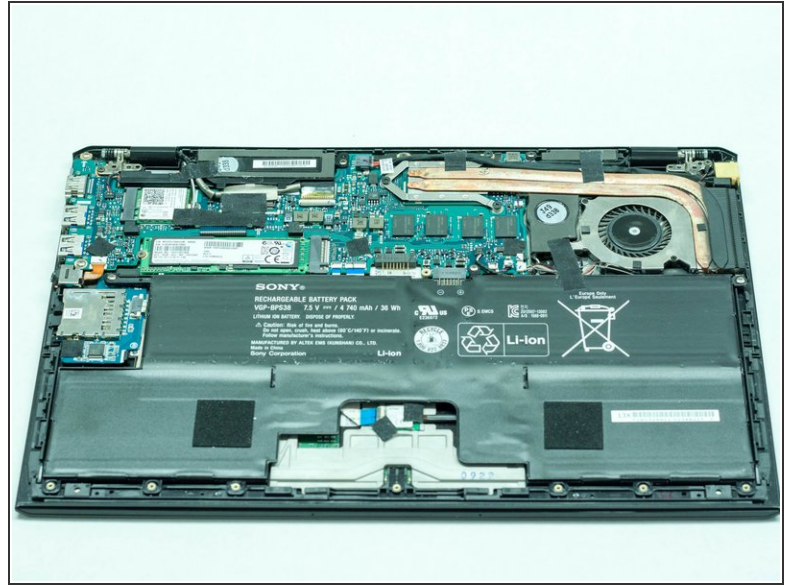
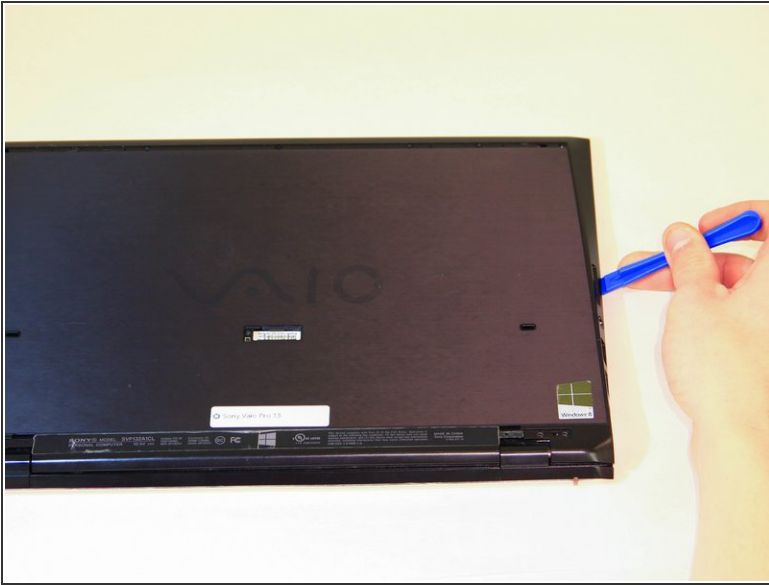
- Remove cover for the extended battery connector. Use your finger nail or a plastic opening tool to remove it.
- Remove the two rubber feet at the back of the computer, these can be removed in the same way.

Step 2



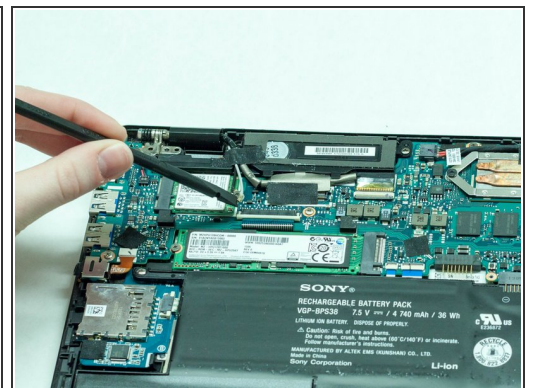
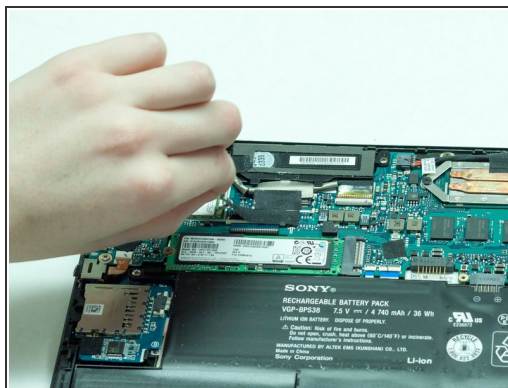
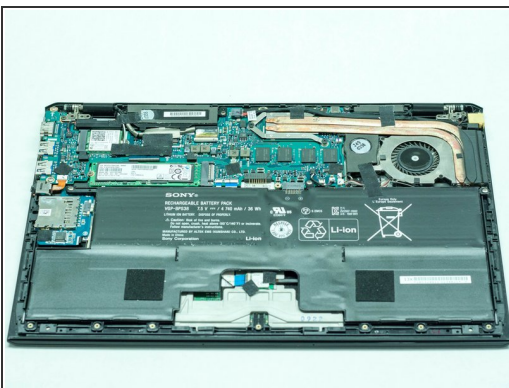
- Remove the four 5.6mm Philips #00 screws located at the top of the computer.
- Remove the eight 3.6mm Philips #00 screws on the base of the computer.

Step 3



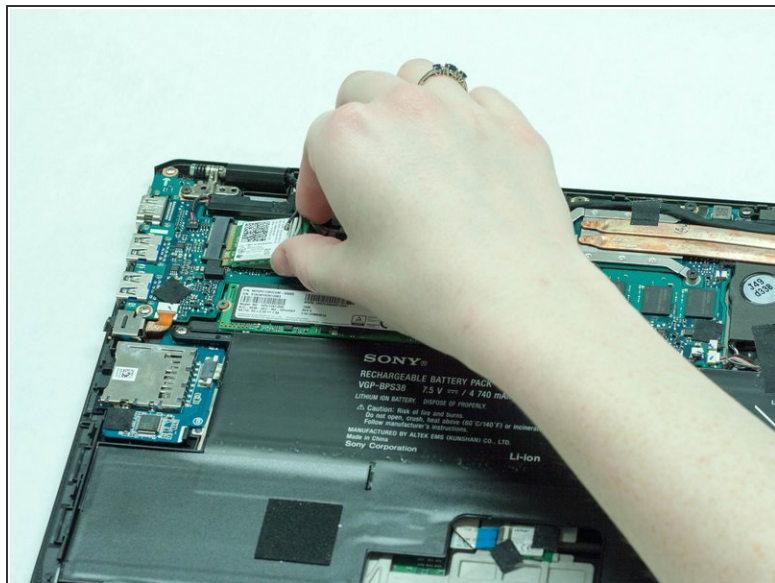
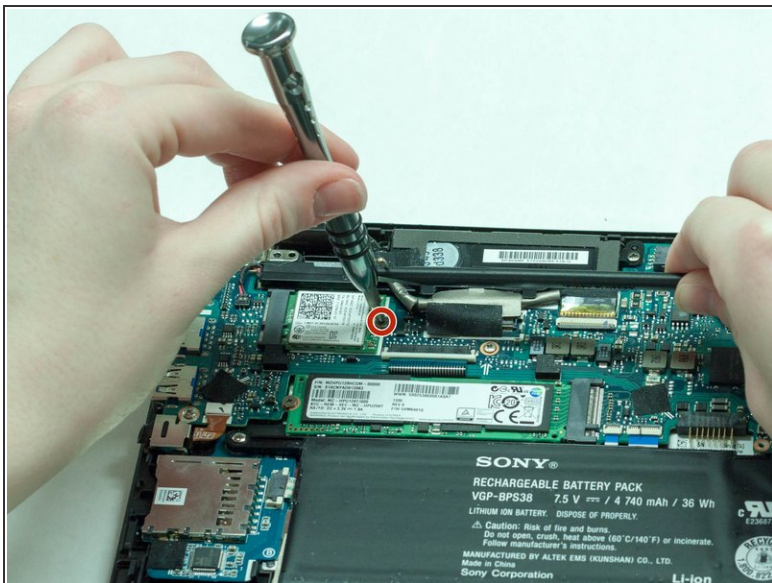
- Using a plastic opening tool, pry the plastic casing away from the base of the computer, the remaining clips around the edges can be released using your hands.
- ⓘ Leave the side with the USB and audio port until last, then slide the case out and off, so the audio port doesn't get caught.

Step 4 — WiFi Card



- *Remove the black tape from on top of the WiFi card.*
- Use the spudger to remove the white wire from the WiFi card.

Step 5



- Remove the 4.2mm Philips #00 screw located at the top of the battery.
- Simply lift the WiFi card away from the computer.

To reassemble your device, follow these instructions in reverse order.