



Sony Vaio SVE111B11L Battery Replacement

This guide will help remove a faulty battery that will not hold a charge. Also the removal of a cracked or broken battery.

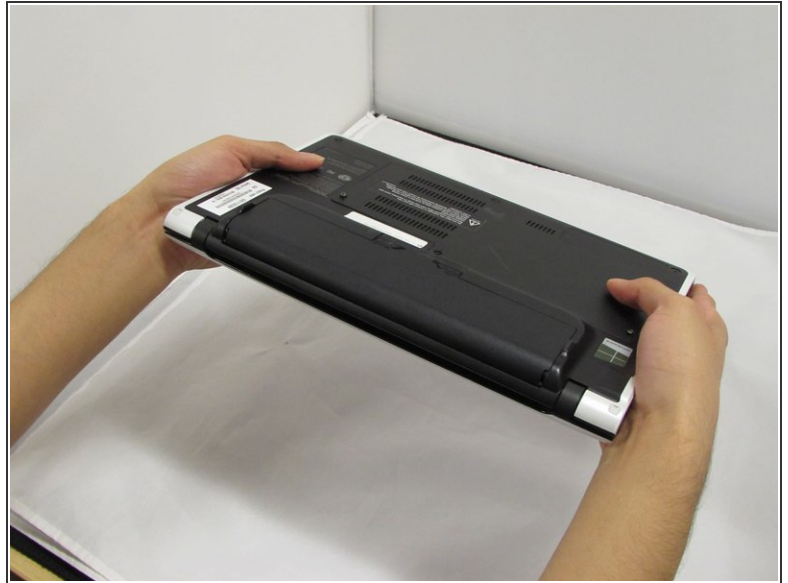
Written By: John Noll




INTRODUCTION

This guide is to help replace a damaged battery with ease.

Step 1 — Battery



 Remove charging adaptor. Some charge may still be in the battery or computer. DO NOT touch connectors or copper yellow connector.

- Locate the battery on the bottom of the computer.
- Flip Computer Toward Yourself

Step 2



- Locate two latches with the words “lock” and “release” on them. You will use these in the next step.

Step 3



- Push the latches towards each other while simultaneously lifting up the battery.

To reassemble your device, follow these instructions in reverse order.