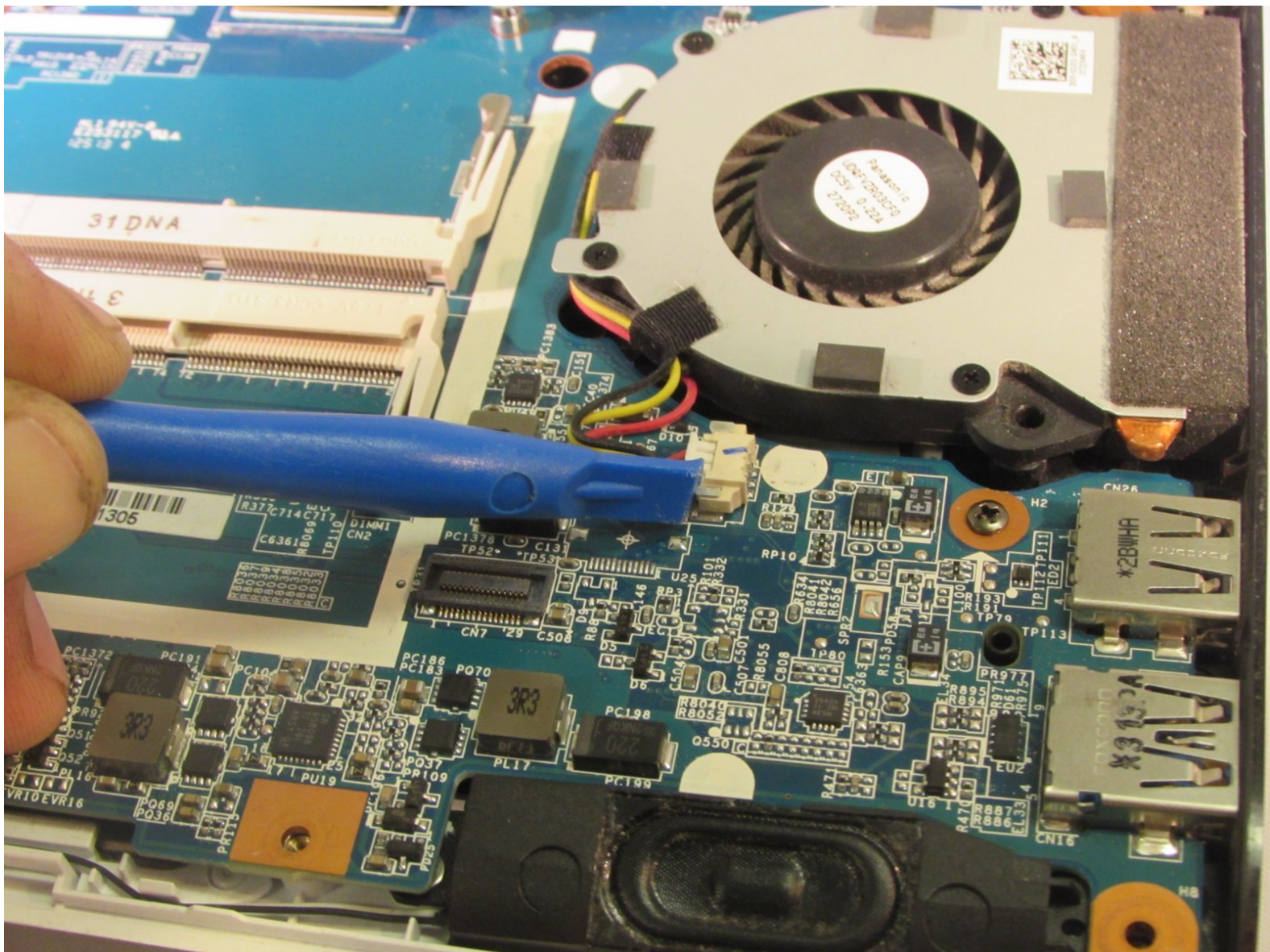




Sony Vaio SVE111B11L Fan Replacement

Replacing a broken fan assembly.

Written By: John Noll

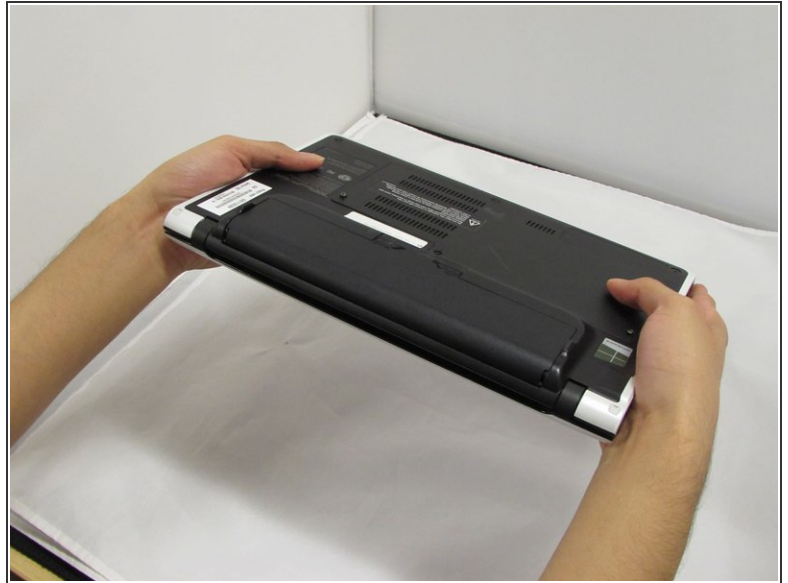





TOOLS:

- [iFixit Opening Tools](#) (1)
 - [Phillips #0 Screwdriver](#) (1)
-

Step 1 — Battery



 Remove charging adaptor. Some charge may still be in the battery or computer. DO NOT touch connectors or copper yellow connector.

- Locate the battery on the bottom of the computer.
- Flip Computer Toward Yourself

Step 2



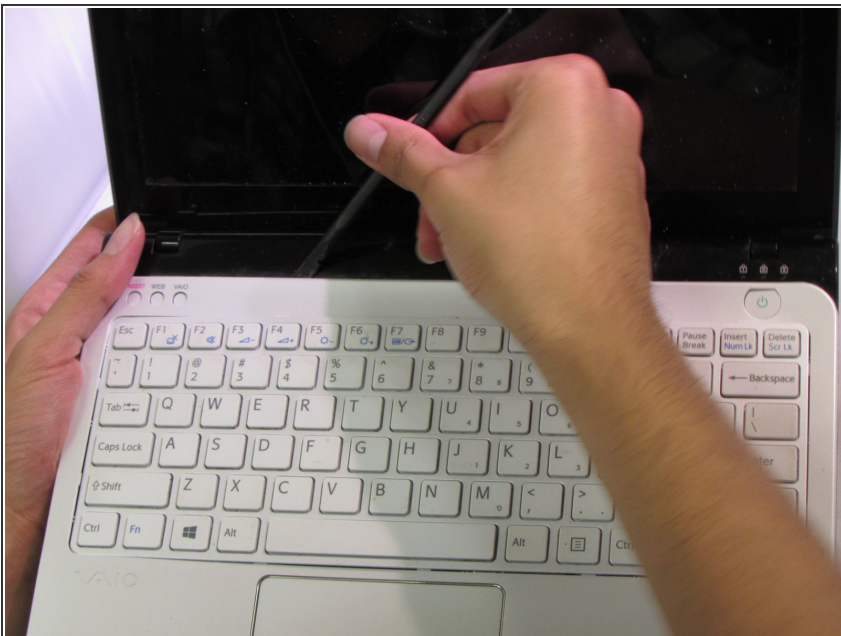
- Locate two latches with the words “lock” and “release” on them. You will use these in the next step.

Step 3



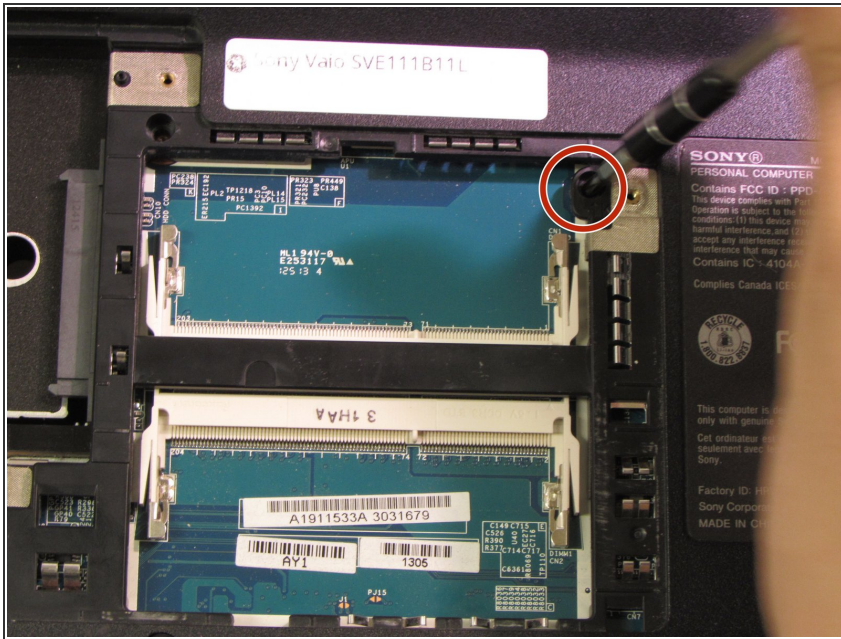
- Push the latches towards each other while simultaneously lifting up the battery.

Step 4 — Keyboard Assembly



- ⚠ Remove charging adaptor. Some charge may still be in the battery or computer.
- ⚠ DO NOT touch connectors or copper yellow connector.
- Remove the memory door on the bottom of the computer to access the screw for the keyboard.
- ⓘ The screws for the memory door do not come out. they are held from falling out.

Step 5



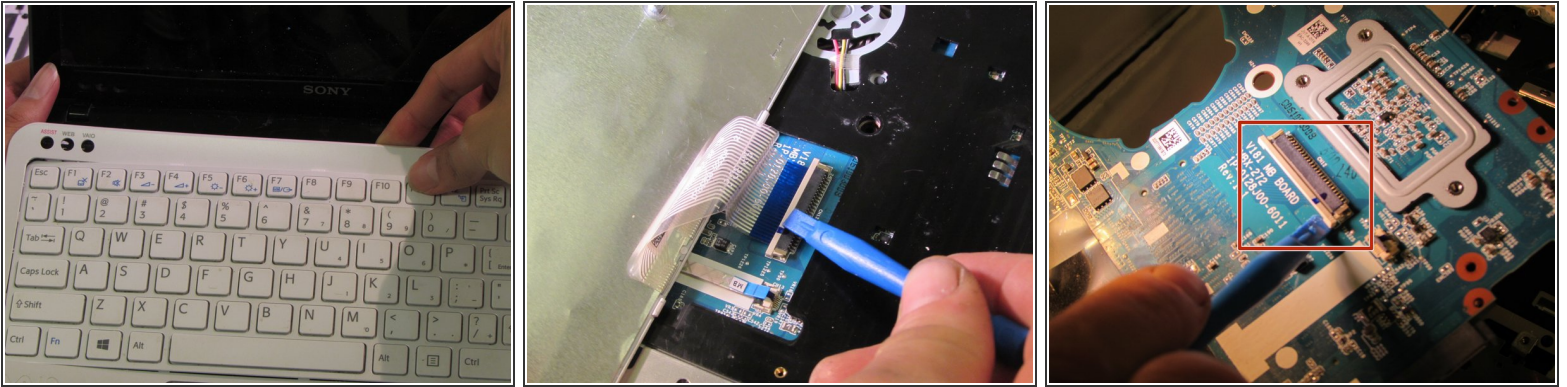
- Locate the screw that holds the keyboard assembly in place.
- Remove this screw.
- Size: L 6.7mm X D 1.9mm

Step 6



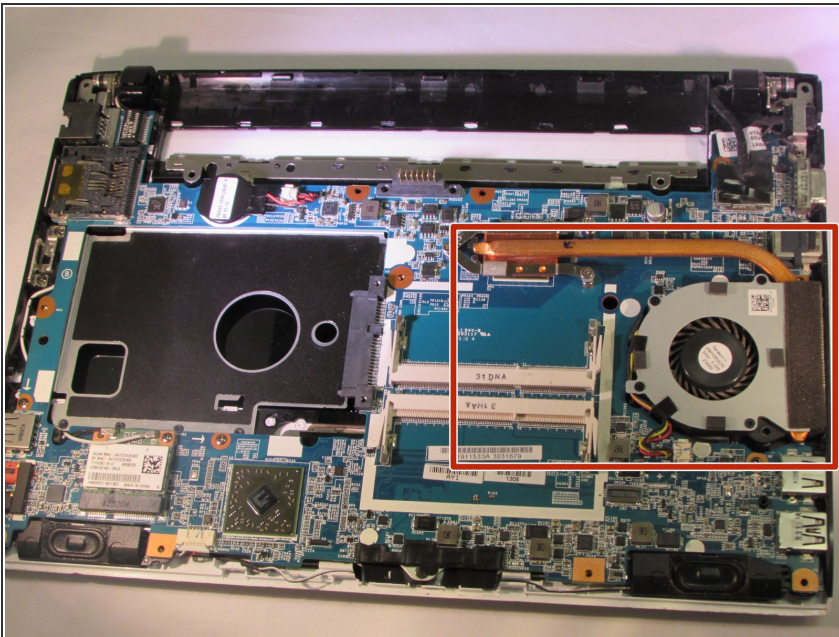
- ❗ Be careful of the keyboard wire connection.
- Slide the wires out. Make sure to slide away from the solder connections.
- Flip computer over and open.

Step 7



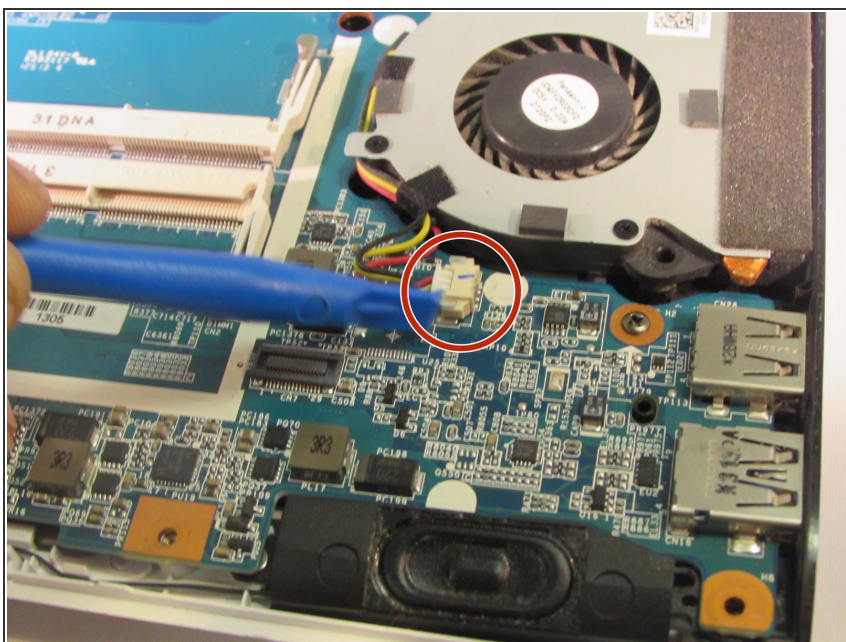
- Gently pry the keyboard assembly from the front. (closest to the screen) With the blue spudger.
- Pry until the keyboard is about two inches up.
- Pull out and up slightly on the connector clip carefully. (Use the blue spudger)
- Gently lift the key board assembly up and out.

Step 8 — Fan



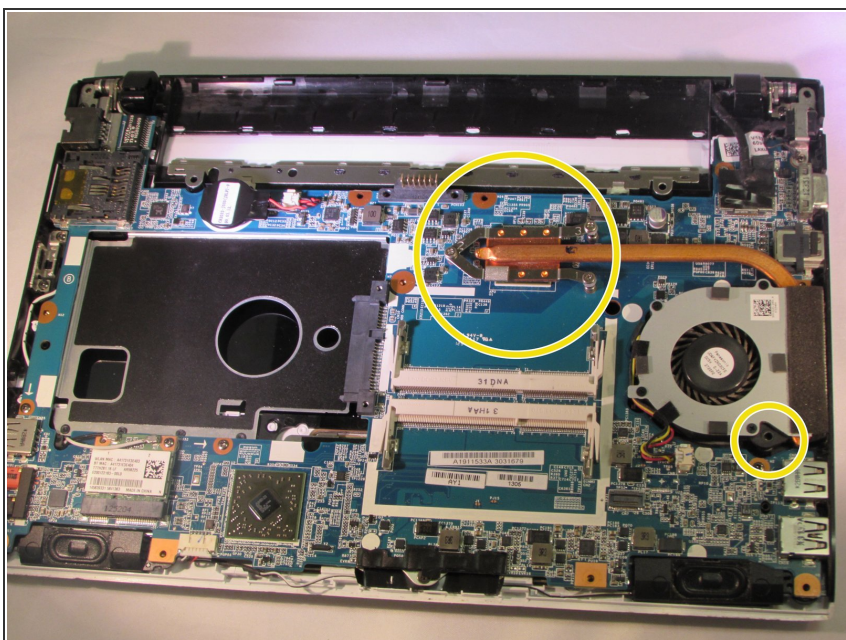
- ⚠ Remove charging adaptor. Some charge may still be in the battery or computer.
- ⚠ DO NOT touch connectors or copper yellow connector.
- Locate the fan and heat-sink.

Step 9



- locate the wires and connectors.
- Gently remove the wires.

Step 10



- Locate the screws, and remove them.
- Screws: L 6.7mm X D 1.9mm

Step 11



- Gently lift the fan assembly up and out.

To reassemble your device, follow these instructions in reverse order.