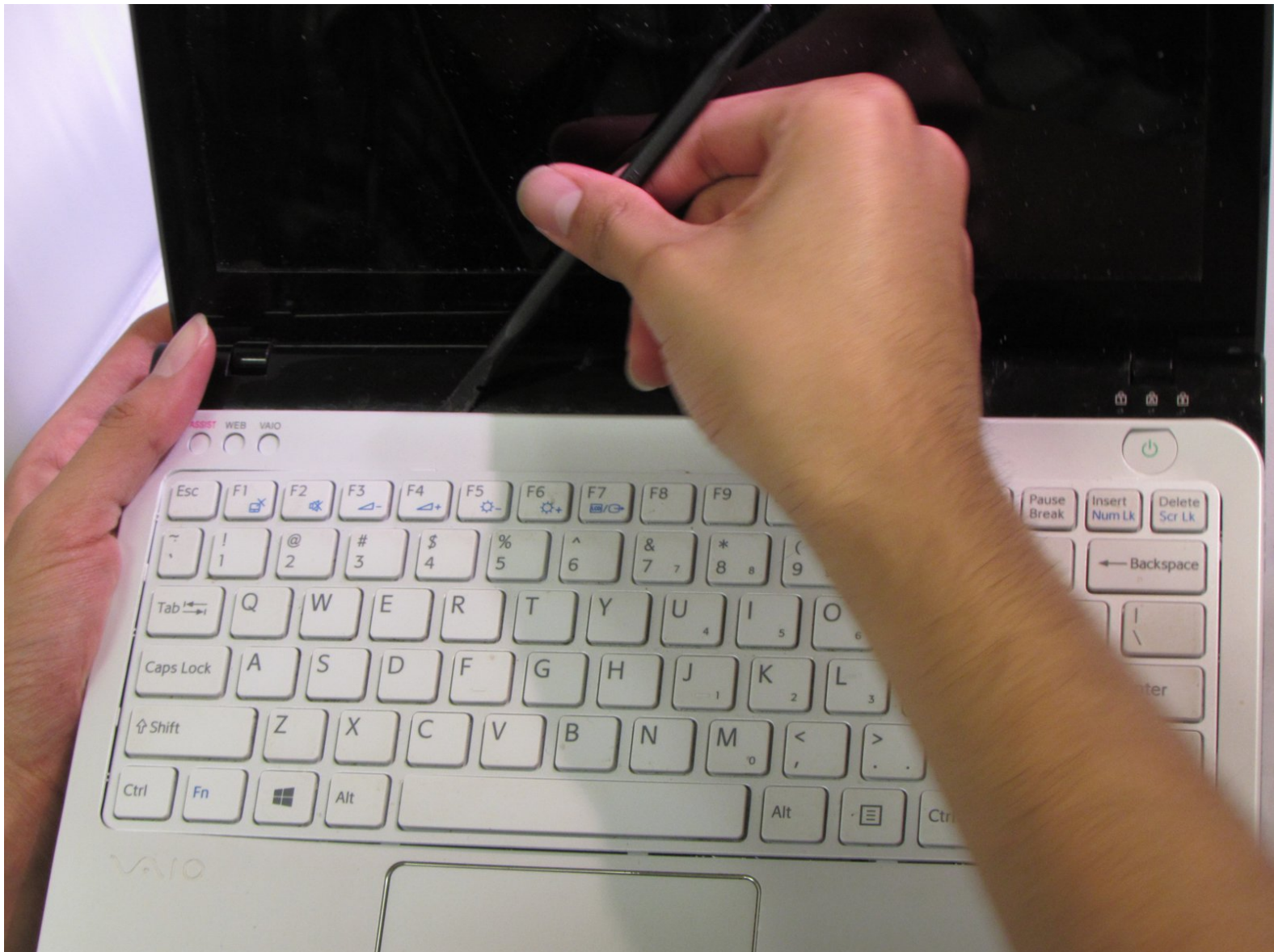




# Sony Vaio SVE111B11L Keyboard Assembly Replacement

Replacing a melted, worn or broken keys or keyboard assembly.

Written By: John Noll

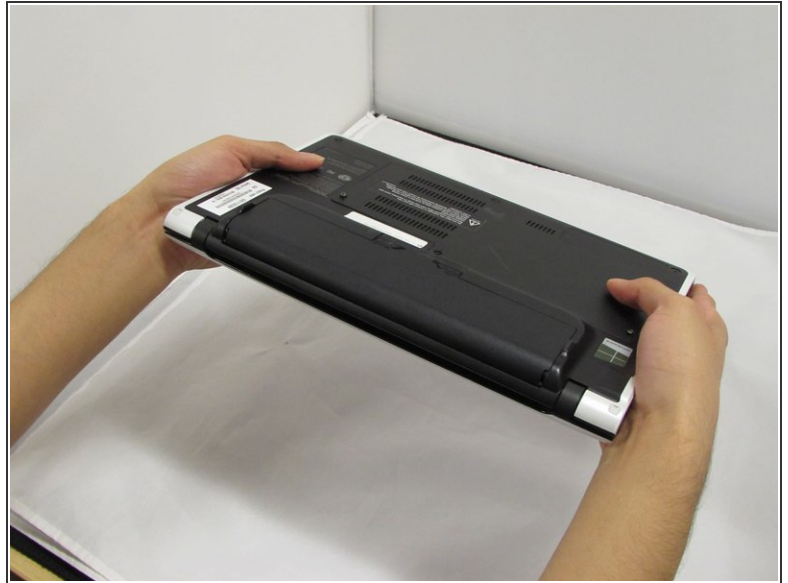





## TOOLS:

- [Phillips #0 Screwdriver](#) (1)
  - [iFixit Opening Tools](#) (1)
-

## Step 1 — Battery



 Remove charging adaptor. Some charge may still be in the battery or computer. DO NOT touch connectors or copper yellow connector.

- Locate the battery on the bottom of the computer.
- Flip Computer Toward Yourself

## Step 2



- Locate two latches with the words “lock” and “release” on them. You will use these in the next step.

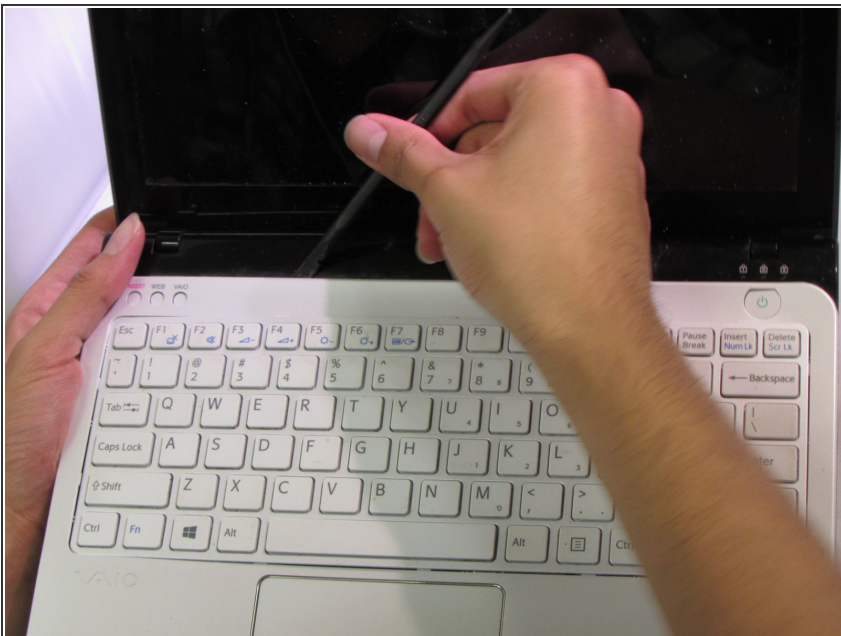


## Step 3



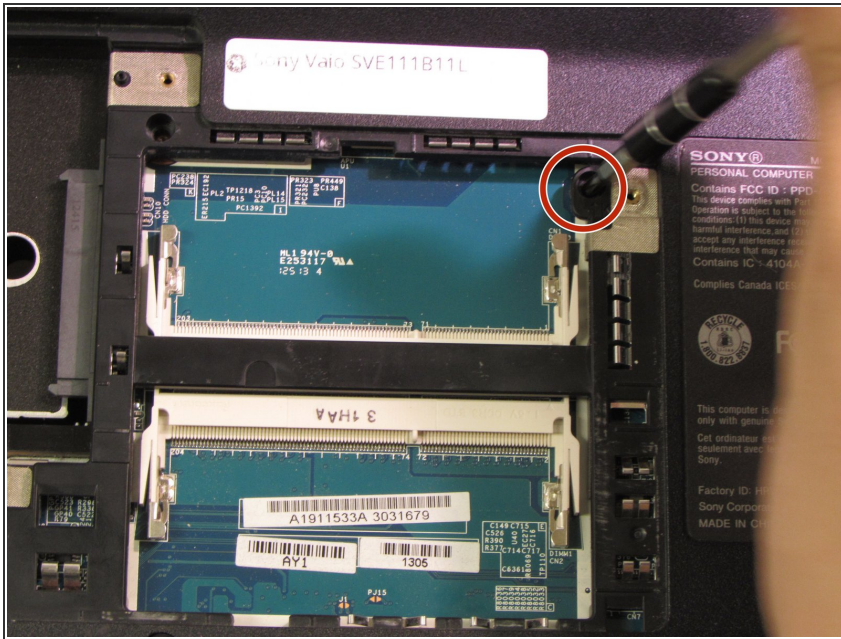
- Push the latches towards each other while simultaneously lifting up the battery.

## Step 4 — Keyboard Assembly



- ⚠ Remove charging adaptor. Some charge may still be in the battery or computer.
- ⚠ DO NOT touch connectors or copper yellow connector.
- Remove the memory door on the bottom of the computer to access the screw for the keyboard.
- ⓘ The screws for the memory door do not come out. they are held from falling out.

## Step 5



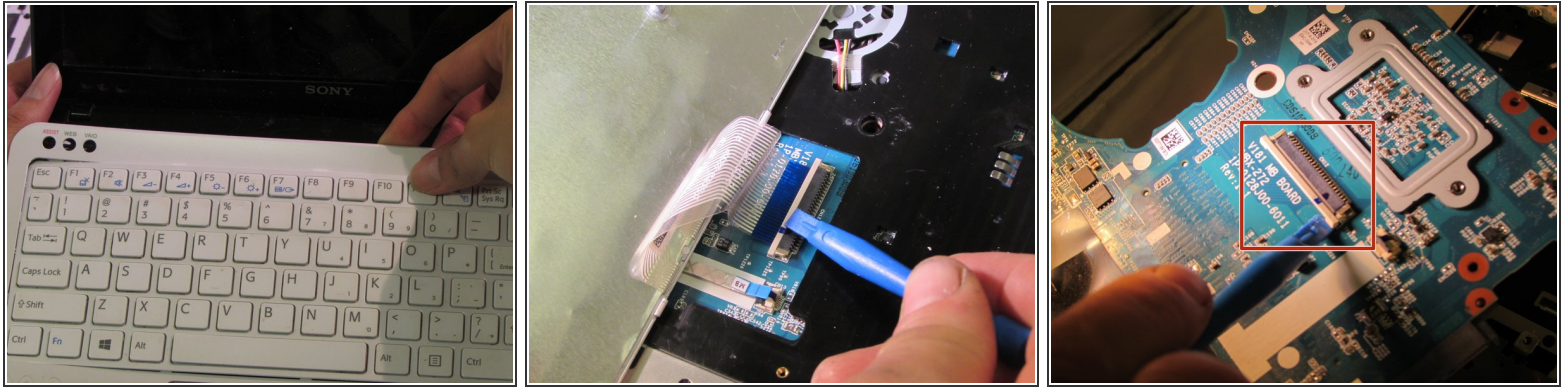
- Locate the screw that holds the keyboard assembly in place.
- Remove this screw.
- Size: L 6.7mm X D 1.9mm

## Step 6



- ❗ Be careful of the keyboard wire connection.
- Slide the wires out. Make sure to slide away from the solder connections.
- Flip computer over and open.

## Step 7



- Gently pry the keyboard assembly from the front. (closest to the screen) With the blue spudger.
- Pry until the keyboard is about two inches up.
- Pull out and up slightly on the connector clip carefully. (Use the blue spudger)
- Gently lift the key board assembly up and out.

To reassemble your device, follow these instructions in reverse order.