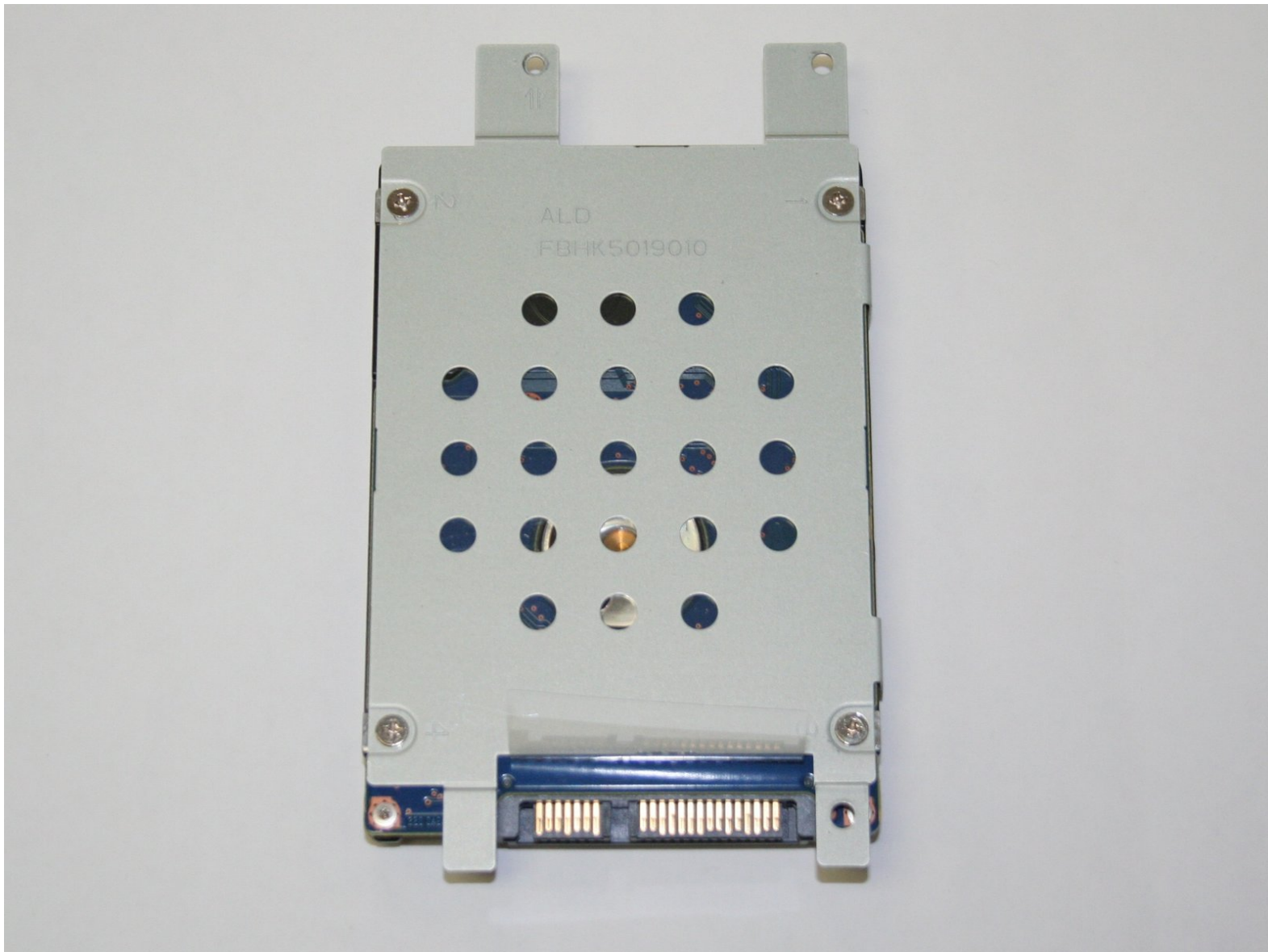




# Sony Vaio SVE15112FXS Hard Drive Replacement

Use this replacement guide to replace an outdated or damaged hard drive on the Sony Vaio SVE15112FXS.

Written By: Ashley Bierman



---

## INTRODUCTION

If your laptop is experiencing performance or storage issues, you can use this guide to replace the internal hard drive. This process is simple, and only requires a #0 Phillips screwdriver and magnetic project mat to keep track of the screws for each step. Be sure to handle the hard drive with care during removal, and do not touch the gold contact points because dirt and debris can damage the part.



### TOOLS:

- [Phillips #0 Screwdriver](#) (1)
  - [Magnetic Project Mat](#) (1)
-

## Step 1 — Hard Drive



- ⚠ Power laptop off before beginning.
- Turn the laptop over so that it is positioned top down with the model number facing you.

## Step 2



- Use a #0 Phillips screwdriver to remove the two 4.0 mm screws securing the hard drive cover.
- ⓘ To avoid losing any parts, we recommend that you place the loose screws on a magnetic project mat.

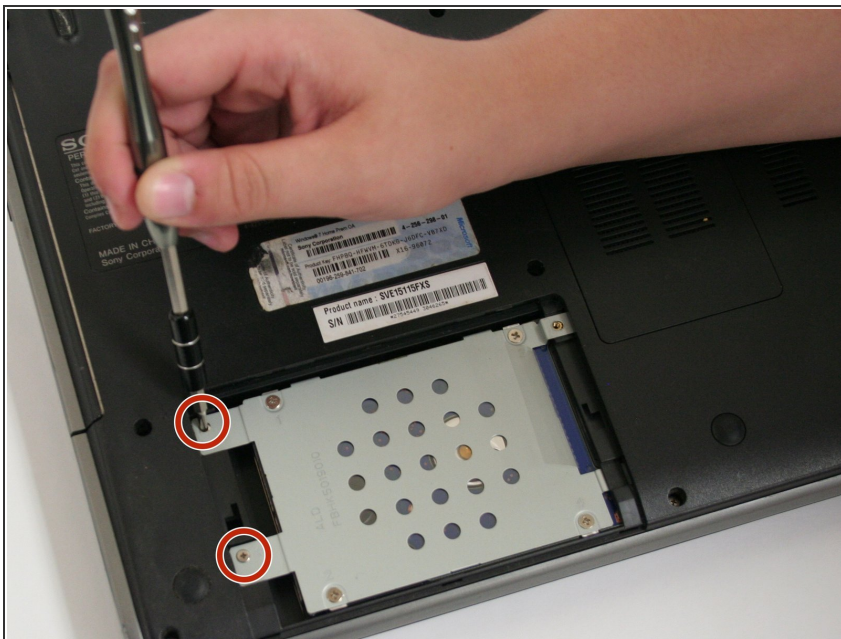


## Step 3



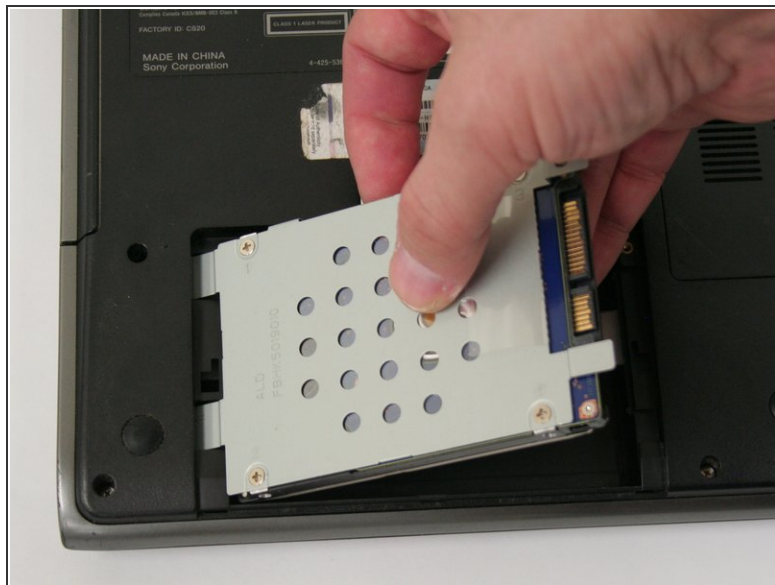
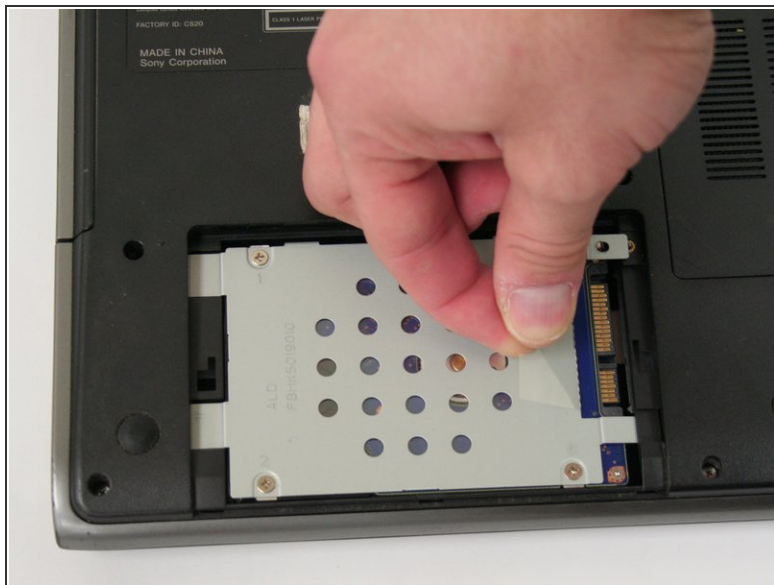
- To expose the hard drive, remove the cover by sliding it toward you and pulling up on the panel.

## Step 4



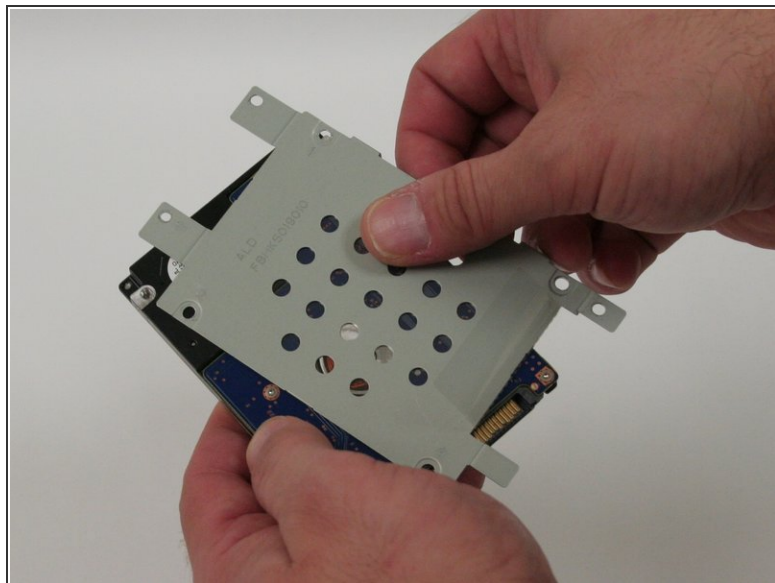
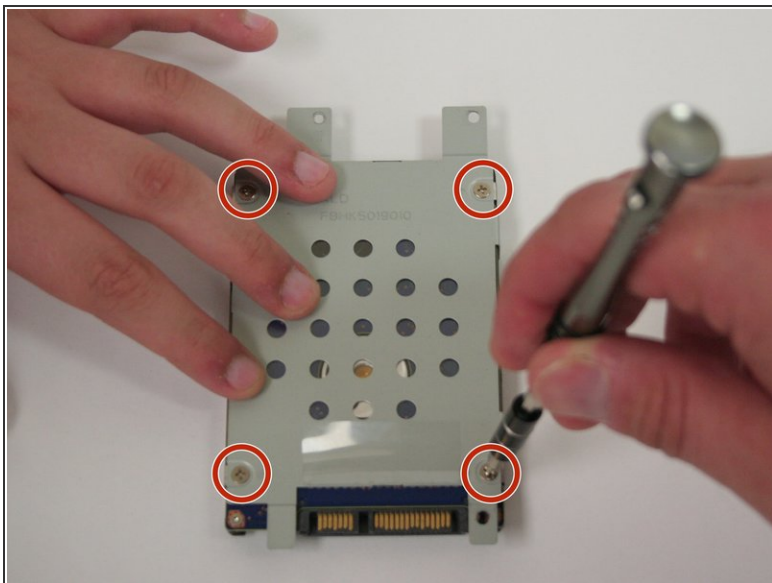
- Use a #0 Phillips screwdriver to remove the two 4.0 mm screws attaching the hard drive to the laptop.

## Step 5



- Pull the clear plastic ribbon to the left until the mount is detached from the laptop.
  - ❗ There will be some resistance as the hard drive is disconnected. If it does not move at all, check that all anchor screws are removed.
- Lift the hard drive out of the well.

## Step 6



- Use a #0 Phillips screwdriver to remove the four 4.0 mm screws attaching the mount to the hard drive.
- Slide the hard drive away from the mount until it is completely detached.
  - ☑ Take note of how the mount is positioned when attached to the hard drive.

To reassemble your device, follow these instructions in reverse order.