



Sony Vaio SVE15112FXS LCD Screen Replacement

Use this LCD Screen replacement guide to replace a broken or cracked screen on the Sony Vaio SVE15112FXS.

Written By: Ashley Bierman



INTRODUCTION

If your laptop display is damaged or does not work at all, you can use this guide to replace the LCD Screen. This process is simple, and only requires a #0 Phillips screwdriver, plastic opening tool, and magnetic project mat to keep track of the screws for each step. Be sure to handle the LCD Screen and all wires with care, as they are delicate parts.



TOOLS:

- [Phillips #0 Screwdriver](#) (1)
 - [Magnetic Project Mat](#) (1)
 - [iFixit Opening Tools](#) (1)
-

Step 1 — LCD Screen



- ⚠ Power laptop off before beginning.
- Turn the laptop over so that it is positioned top down with the model number facing you.

Step 2



- Slide the "lock" tab upward to unlock the battery before removal.
- While pushing the "release" tab upward, lift the battery and pull outward to remove it from the laptop.

Step 3



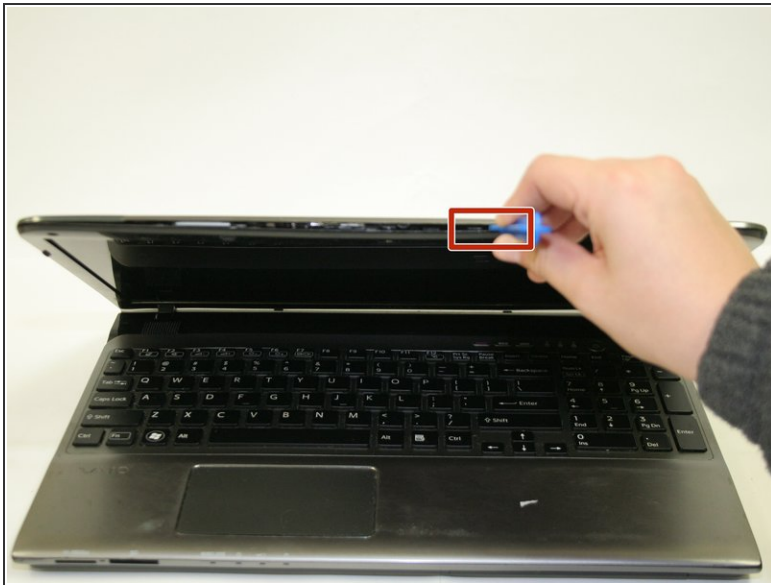
- Turn the computer back over and open the lid.
- Remove the four rubber screw covers at each corner of the screen to expose the bezel screws

Step 4



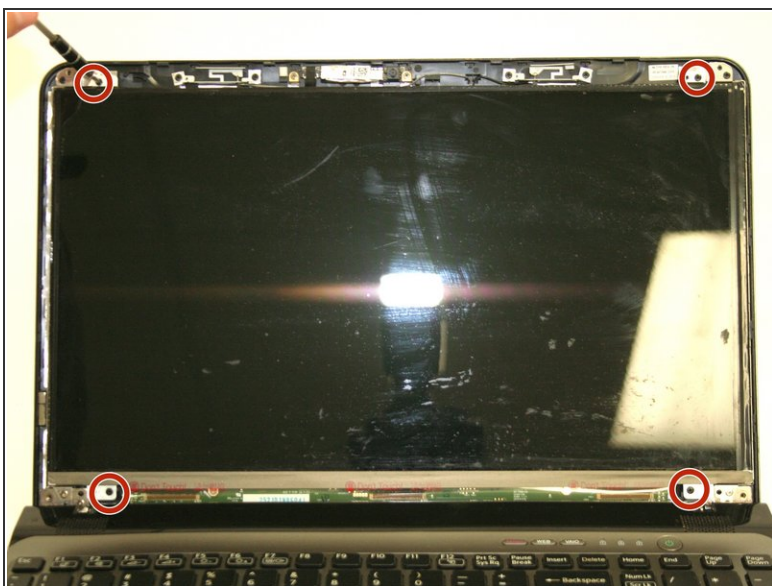
- Use a #0 Phillips screwdriver to remove the four 4.0 mm screen bezel screws in each corner.

Step 5



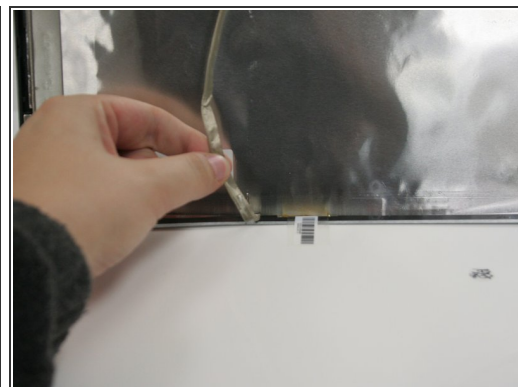
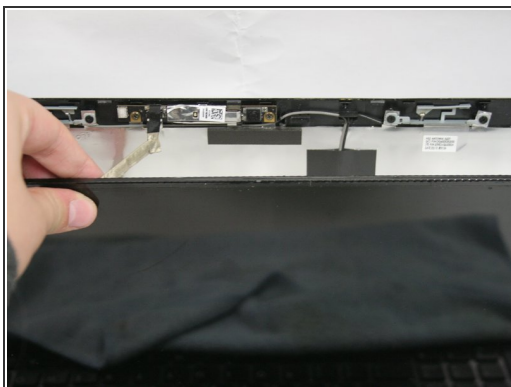
- Insert a plastic opening tool between the bezel and laptop lid. Work it around the edge to loosen the bezel.
- Lift the bezel outward to remove it and expose the screen.
- ⚠ Take care when using the spudger near the hinges to avoid breaking the bezel.

Step 6



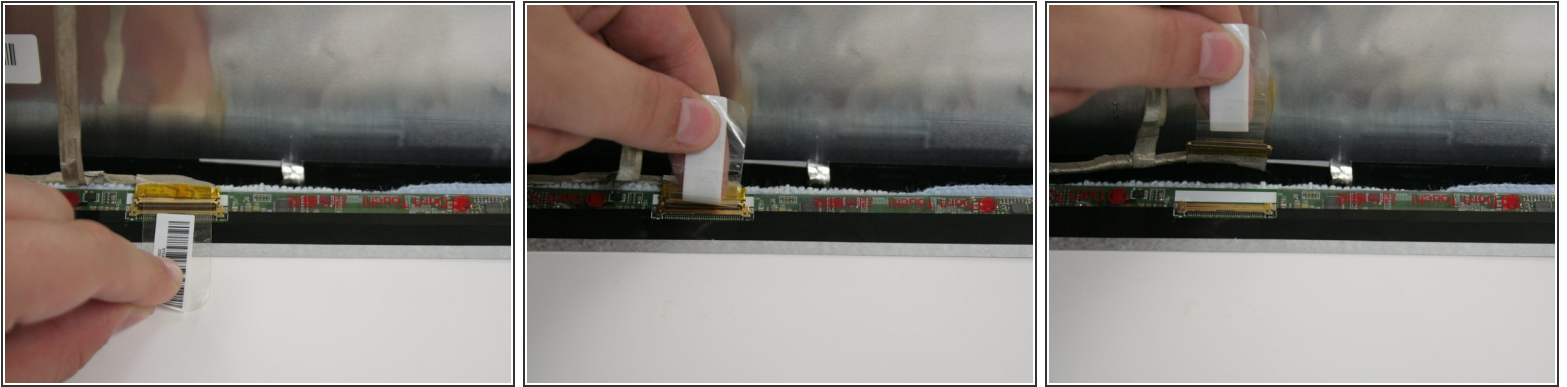
- Use a #0 Phillips screwdriver to remove the four 3.0 mm screen screws.
- ⚠ Cover the keyboard with a cloth or towel to protect the screen and keep any broken glass out of the keyboard.

Step 7



- Pull the screen toward you and away from the lid until a silver cable behind the screen is visible.
- Remove the silver cable from the back of the screen. It is glued at the top and the bottom.
- ⓘ Do not pull the cable loose from the lid, only remove it from the back of the screen.

Step 8



- Lift the barcode label on the back of the screen upward to loosen the screen cable connector.
- Once the connector is visible, remove it from the pins on the back of the screen.

Step 9



- Lift the screen toward you to remove it completely from the lid.

To reassemble your device, follow these instructions in reverse order.