



# Sony Vaio SVF15A16CXB Hard Drive Replacement

This guide will help you locate and replace this laptop's hard drive.

Written By: Quinn Walter

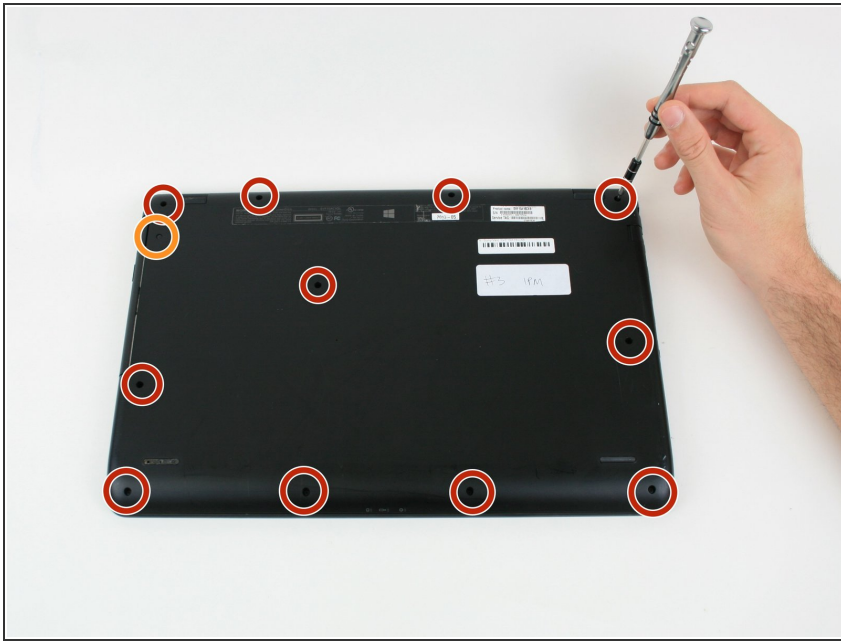




## TOOLS:

- [Phillips #0 Screwdriver](#) (1)
- [iFixit Opening Tools](#) (1)
- [Phillips #00 Screwdriver](#) (1)

## Step 1 — Back Panel



- Unscrew the eleven 6 mm screws from the back panel on the bottom of laptop with the Phillips #0 screwdriver.
- Unscrew the one 4 mm screw from the back panel on the bottom of laptop with the Phillips #0 screwdriver.
- ❗ 6 mm screws marked in red, 4 mm marked in orange

## Step 2



- Using a plastic opening tool, pull the optical drive out of the computer by the seam.

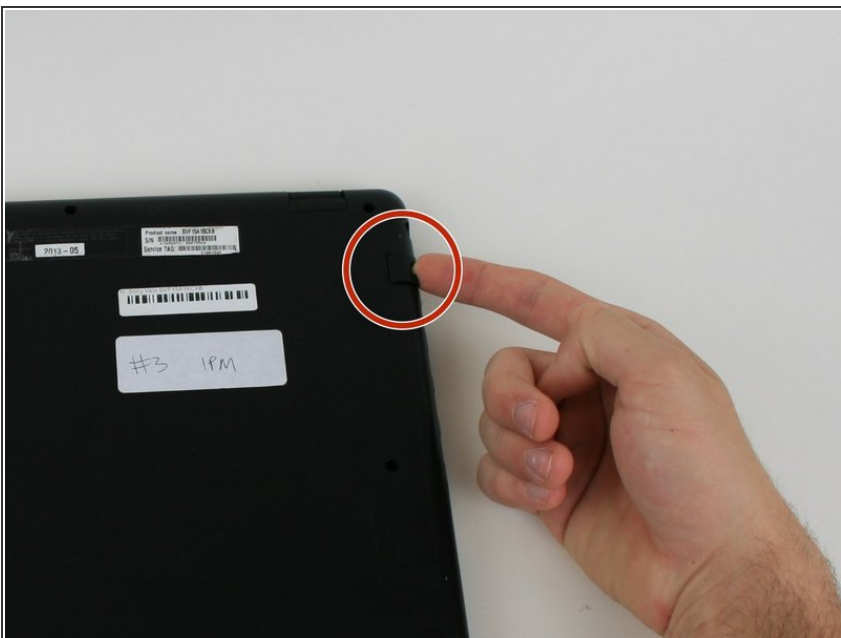
🔧 In reassembly, slide the optical drive back in after reapplying cover.

### Step 3



- Run the opening tool along the bottom cover seam.

### Step 4



- Lift the clip marked in red in order to release the back cover.
- Lift the back cover.

## Step 5 — Hard Drive



- Unscrew the three 4mm screws with the Phillips #0 screwdriver located on the outer edge of the hard drive.

## Step 6



- Lift hard drive up from it groundings.
- Slide hard drive to the left in order to remove it.

To reassemble your device, follow these instructions in reverse order.