



# Sony Vaio SVT131A11L Display Replacement

How to replace the display on a Sony Vaio SVT131A11L laptop.

Written By: Benjamin



## INTRODUCTION

The display replacement for the Sony Vaio T13 series of laptops the most intricate and time-consuming replacement process. Allocate about 1-2 hours for this replacement, making sure to take your time and keep your screws organized.

The replacement display should be 13.3" in size, and should specify a native resolution of 1366x768.



### TOOLS:

- [Phillips #0 Screwdriver](#) (1)
- [iFixit Opening Tools](#) (1)
- [Flathead Screwdriver](#) (1)



### PARTS:

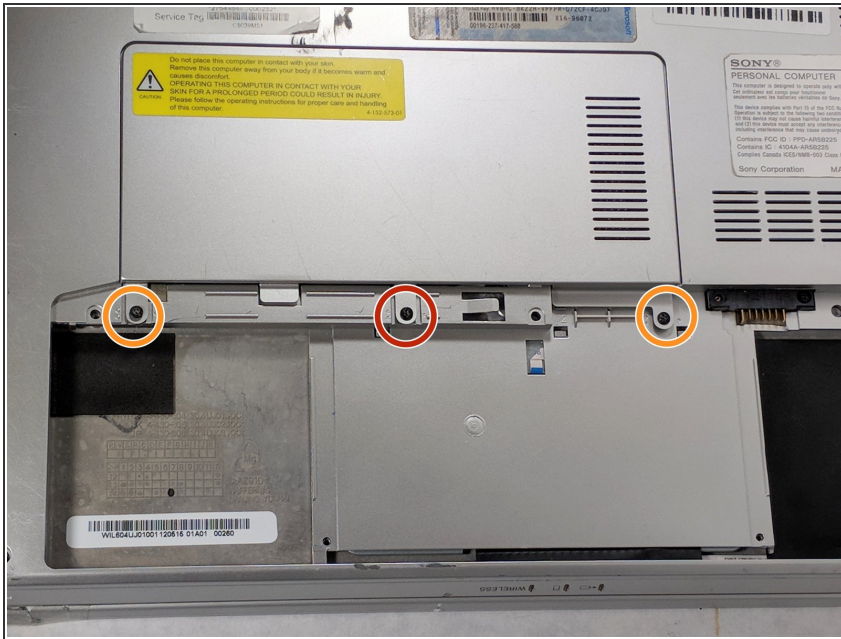
- [Sony Vaio SVT13 Display Complete Black](#) (1)

## Step 1 — Battery



- Carefully grab the edges of the laptop and flip it over to reveal the back panel.
- The battery is located on the lower half of the back panel, and contains three 10mm flat-head screws.
- Unscrew the three 10mm flat-head screws using a flat-head screw driver.
- Lift the battery from the lip closest to the middle screw to remove the battery entirely.

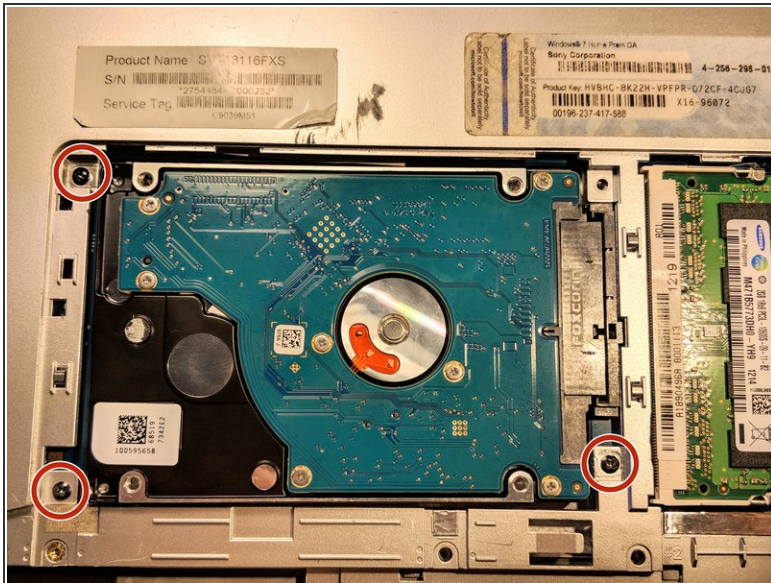
## Step 2 — Motherboard



- i The Hard Drive bay cover has three Phillips head screws at two different lengths. Be sure to organize your screws, as improper replacement will result in damage to your device.
- The middle Phillips head screw is 10mm in length and will only fit in this thread. Unscrew the 10mm Phillips head screw and keep it separate from the other two screws in this step.
- Unscrew the two remaining 5mm Phillips head screws on the left and right side of the hard drive bay cover.
- Lift the panel to remove it.



## Step 3



- Remove the three 5mm Phillips head screws that secure the Hard Drive bay to the back panel.

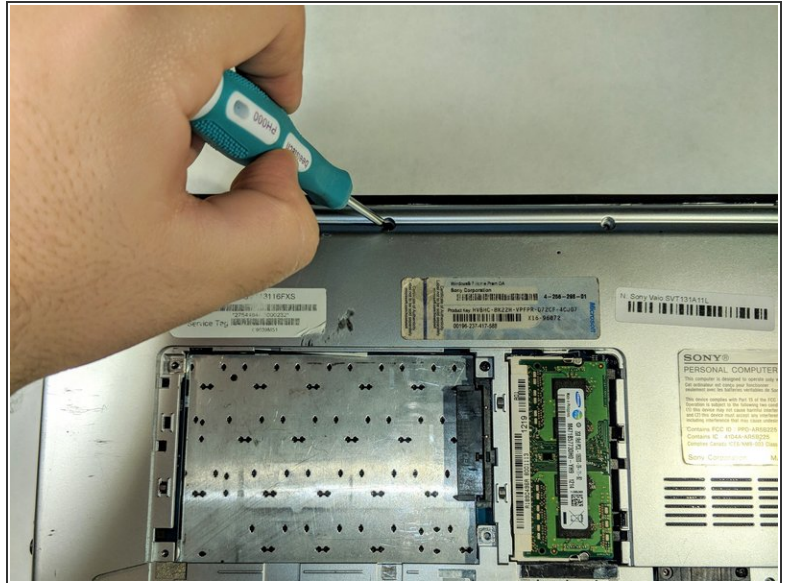
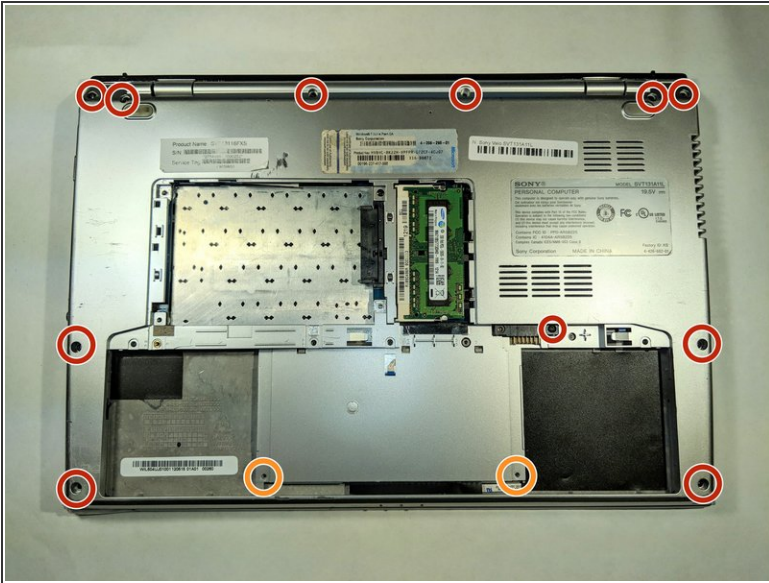
## Step 4



- Remove the Hard Drive bay by gently pulling the black plastic tab away from the SATA connector.
- ⚠ When removing the hard drive bay, it is important not to pull the black tab too hard; it may rip off/cause damage to the SATA connector, resulting in much bigger issues.
- ① Using a plastic pry-tool to push the drive away from the SATA connector can also help at this step.

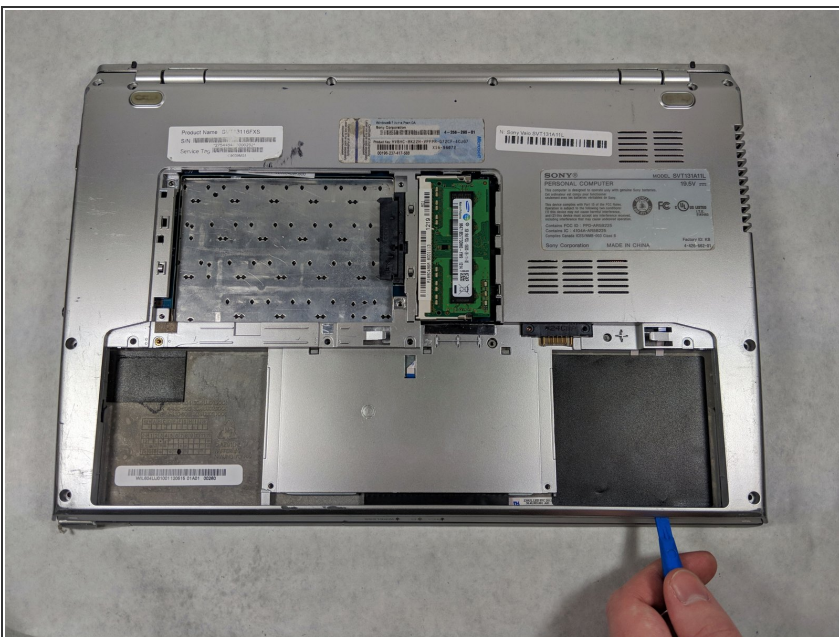


## Step 5



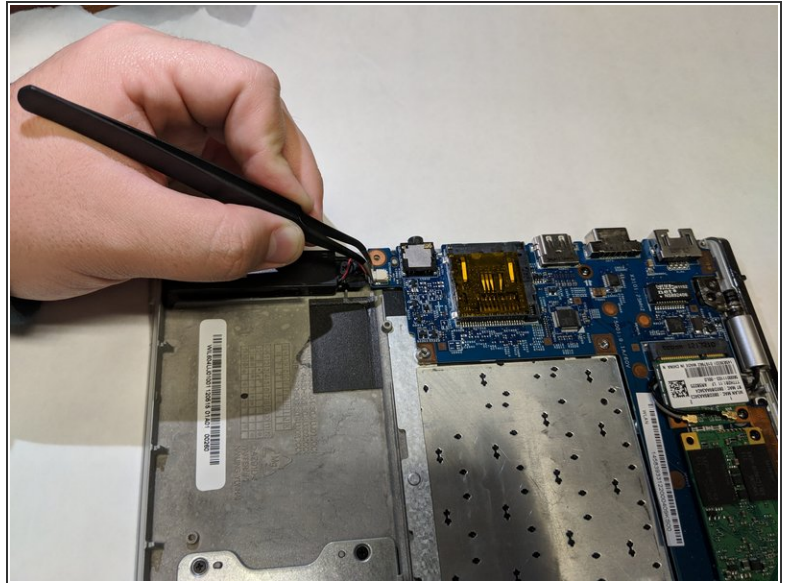
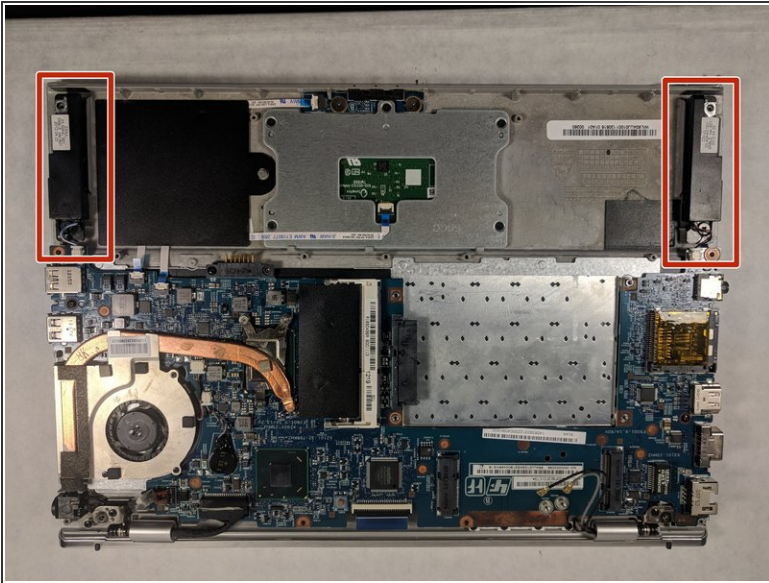
- Remove the eleven 5mm in length Phillips head screws around the perimeter of the back panel of the laptop.
- Remove the two 5mm in length Phillips head screws holding down the track pad panel to the track pad.

## Step 6



- ⚠ Be careful when prying the back panel away from the laptop, the plastic frame and hinges that attach it to the back panel are prone to bending/cracking.
- Use a prying tool, separate the back panel from the laptop.

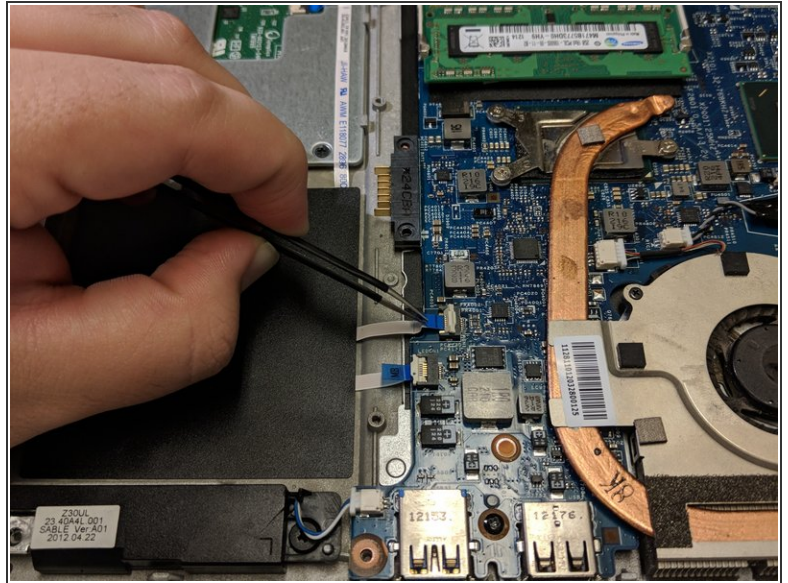
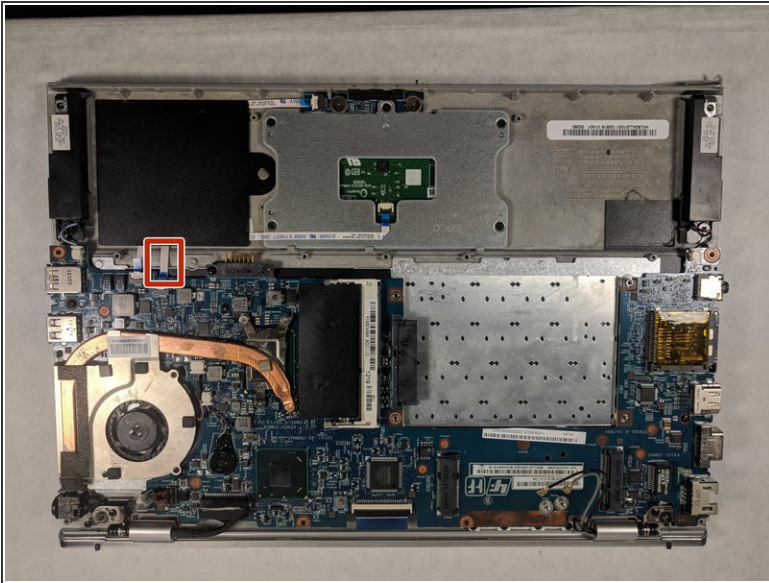
## Step 7



- Using a pair of tweezers, remove the two cables connecting both speakers to the motherboard panel.



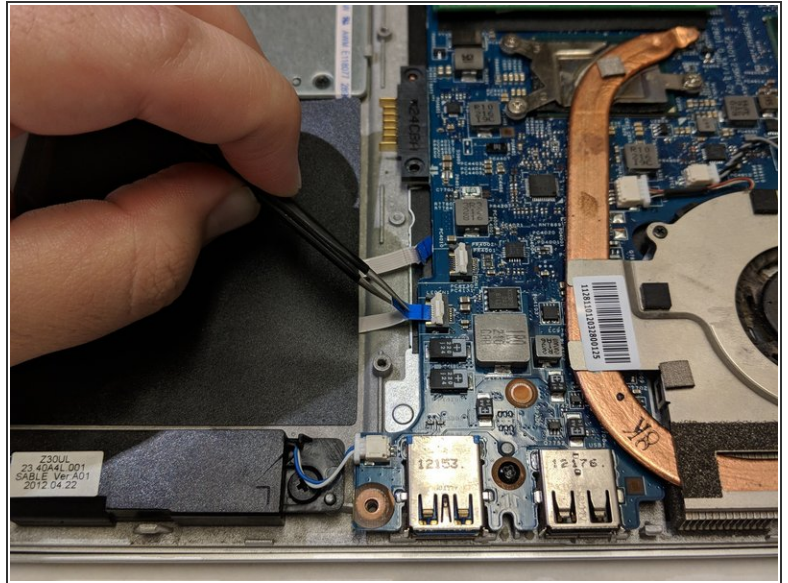
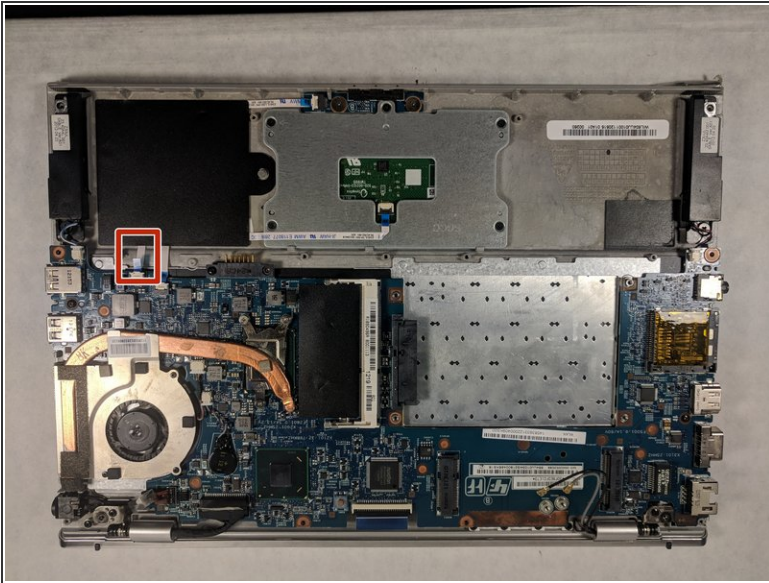
## Step 8



- Locate the ribbon cable connecting the trackpad to the motherboard.
- Lift the white plastic tab holding the ribbon cable in place to release it.
- Remove the ribbon cable by pulling the blue tab away from the motherboard.

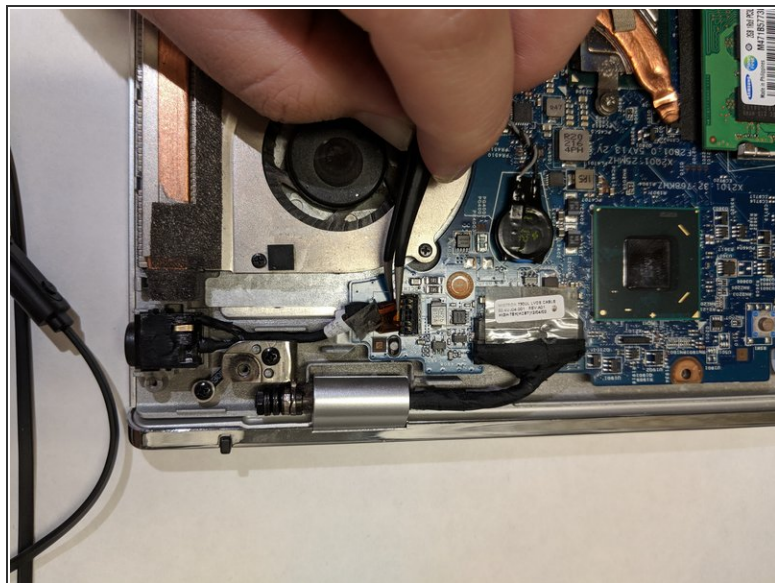
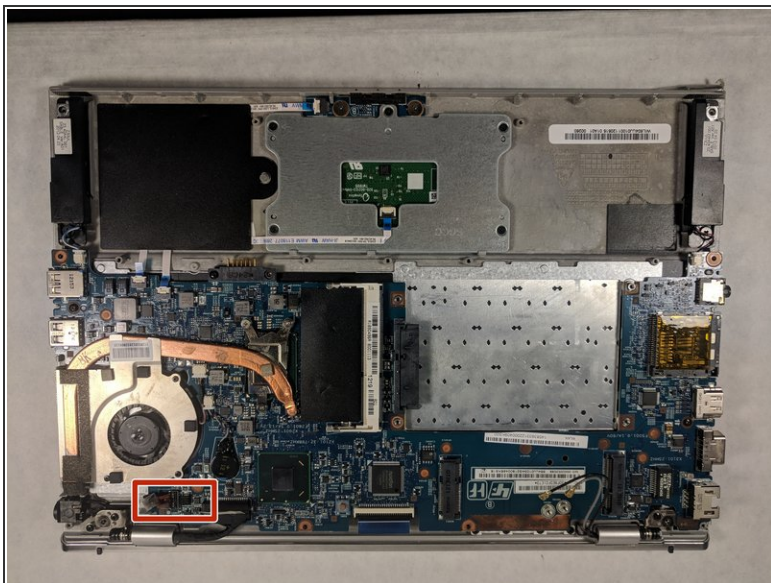


## Step 9



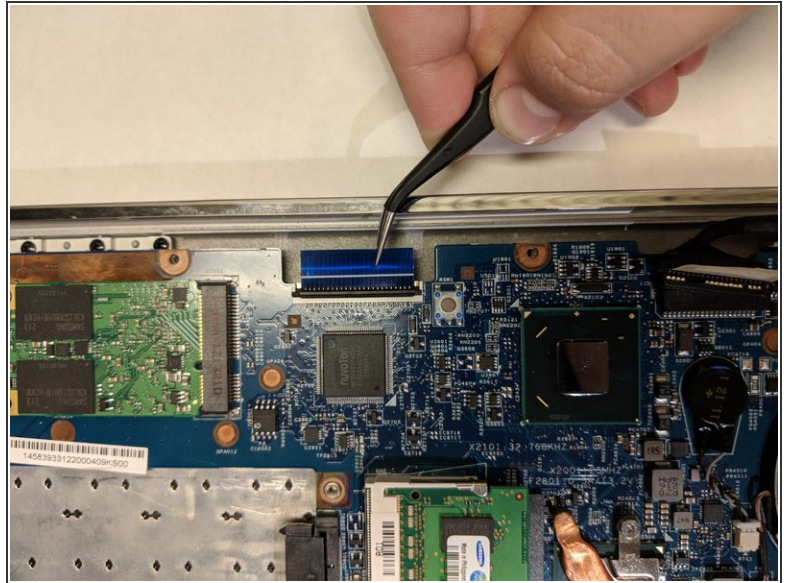
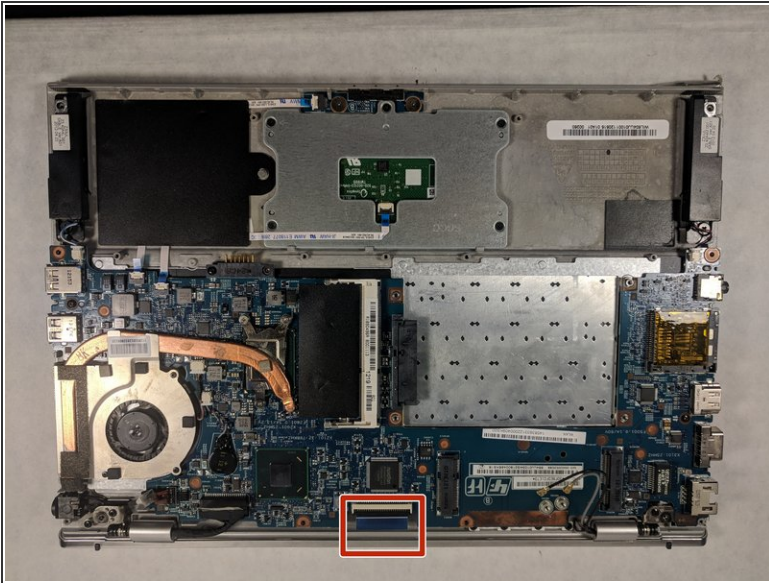
- Locate the ribbon cable connecting the LED Array to the motherboard.
- Lift the white plastic tab holding the ribbon cable in place to release it.
- Remove the ribbon cable by pulling the blue tab away from the motherboard.

## Step 10



- Locate the cable that connects the charging port to the motherboard.
  - Grab the head of the cable and pull up and away from motherboard to disconnect it.
- ⚠ Be sure to remove the AC adapter from the laptop before attempting this step. A plastic spudger will also work here, and will not pose a risk of shorting out any components on the motherboard.

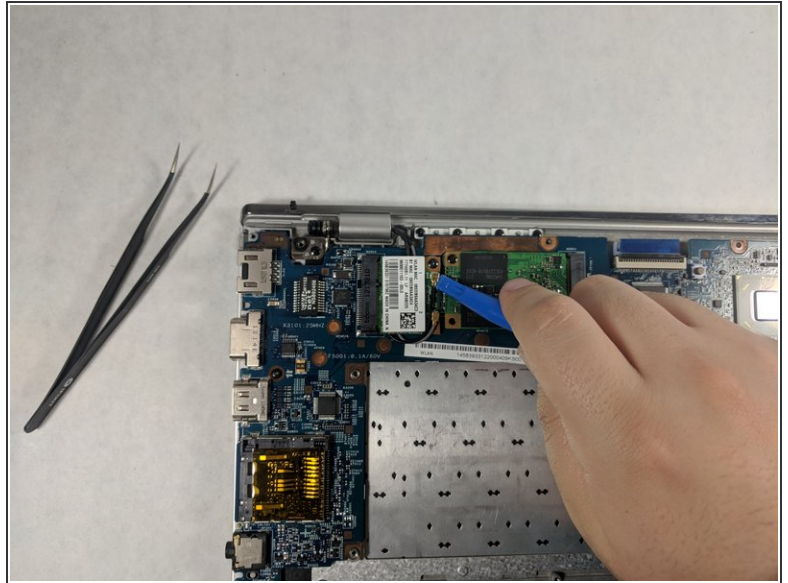
## Step 11



- Locate the ribbon cable connecting the keyboard to the motherboard.
- Lift the white plastic tab up to release the keyboard ribbon cable.
- Pull the blue tab away from the connector to remove the cable.

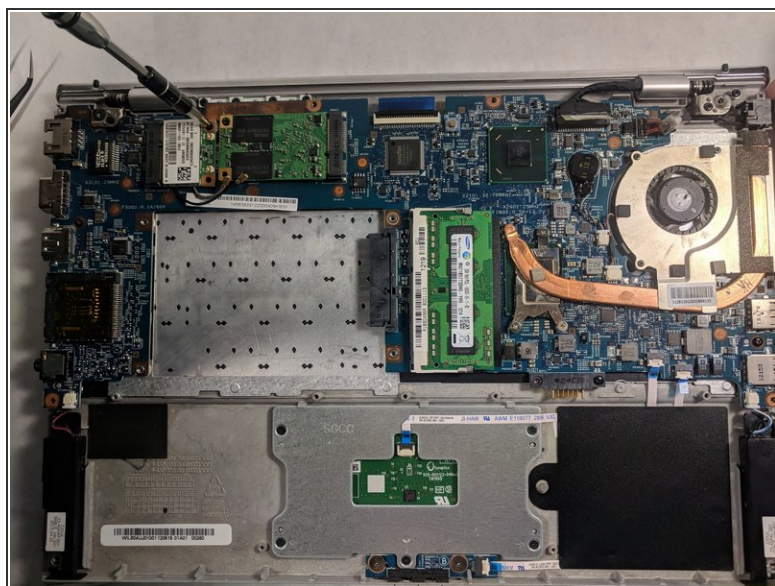
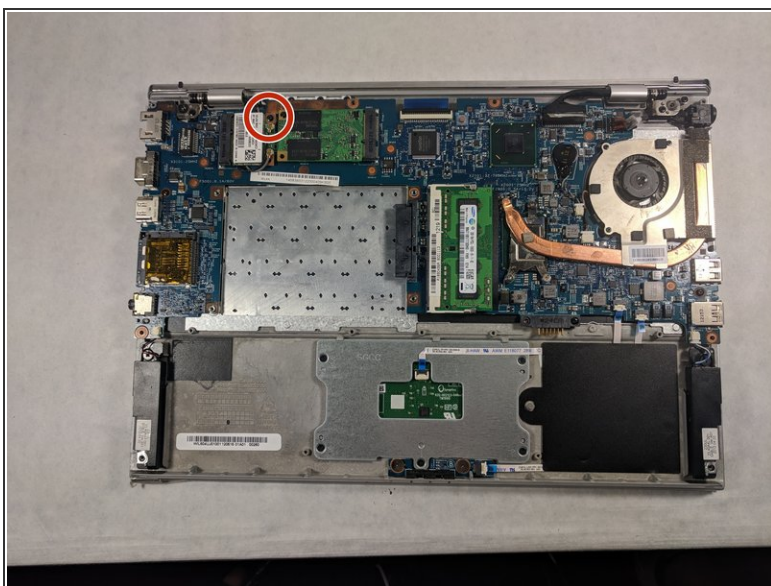


## Step 12



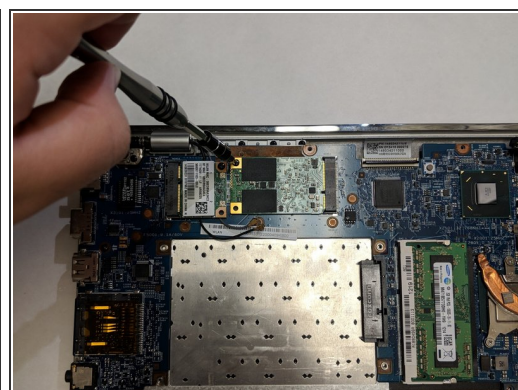
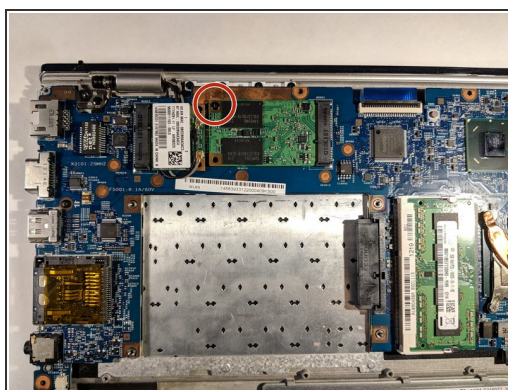
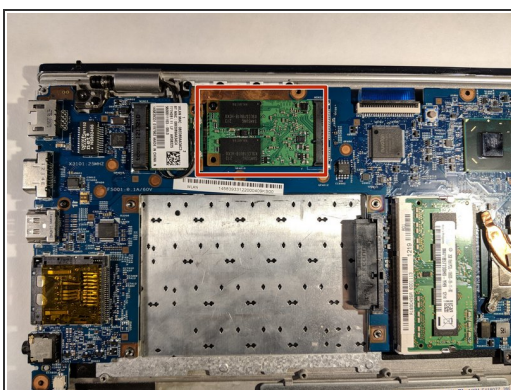
- Locate the wireless network interface card (NIC) above the area where the hard drive bay sits normally.
- Using a plastic opening tool, remove the two cable head wires connecting the NIC to the motherboard.

## Step 13



- Unscrew the 5mm Phillips head screw holding the NIC to the motherboard.
- Remove the NIC from the PCIe slot on the motherboard.

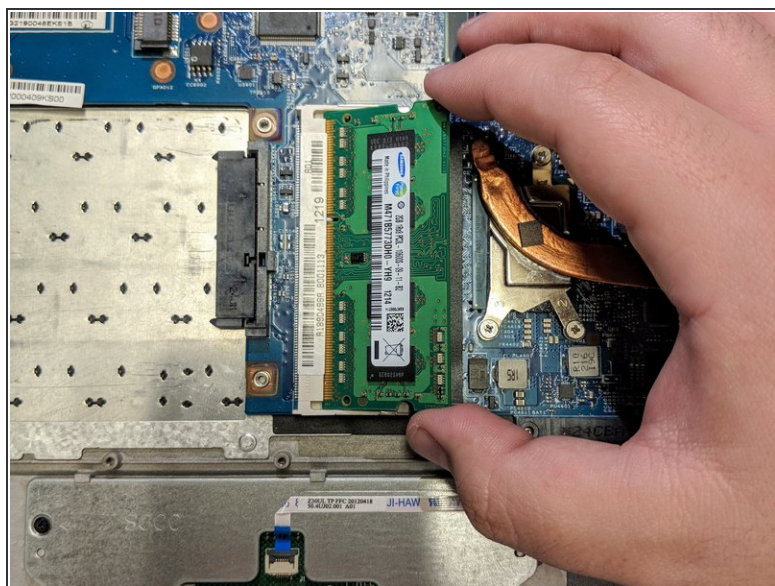
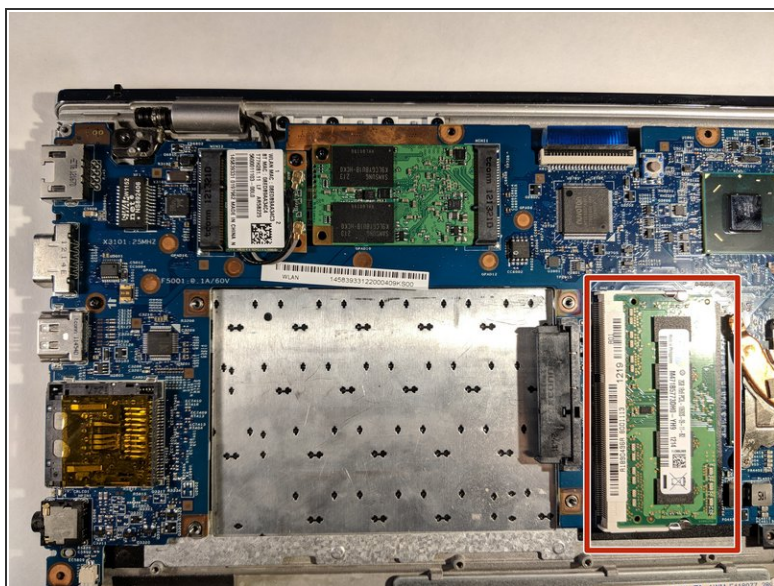
## Step 14



- Locate the Solid State Drive (SSD) on the motherboard.
- Unscrew the 5mm Phillips head screw securing the SSD in place on the motherboard.
- Remove the SSD from the PCIe slot on the motherboard.



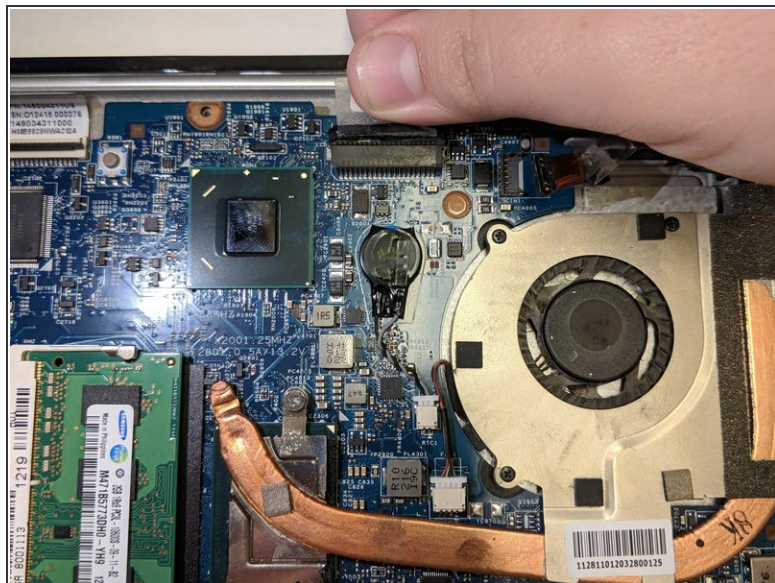
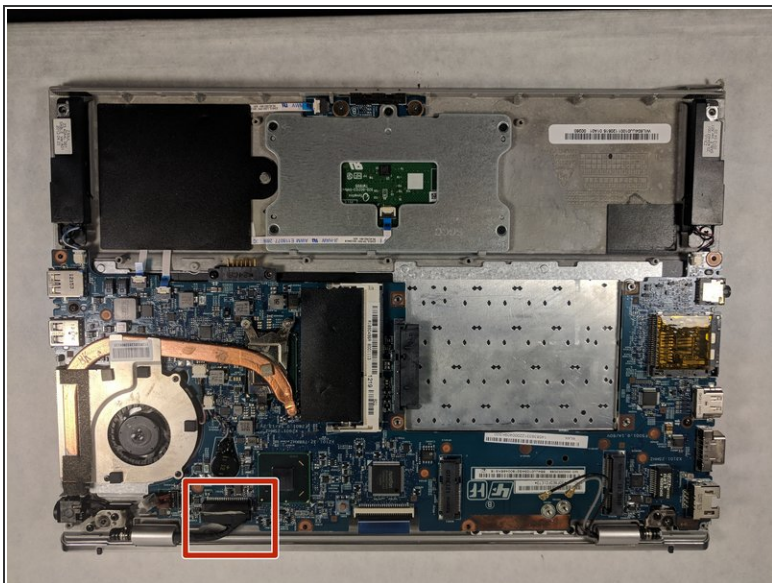
## Step 15



- Locate the Random Access Memory (RAM) card on the motherboard.
- Pull the two metal clips securing the RAM apart, releasing the card from the DIMM slot.
- Remove the RAM from the motherboard, be sure to store this safely as your replacement motherboard with NOT come with a new one.

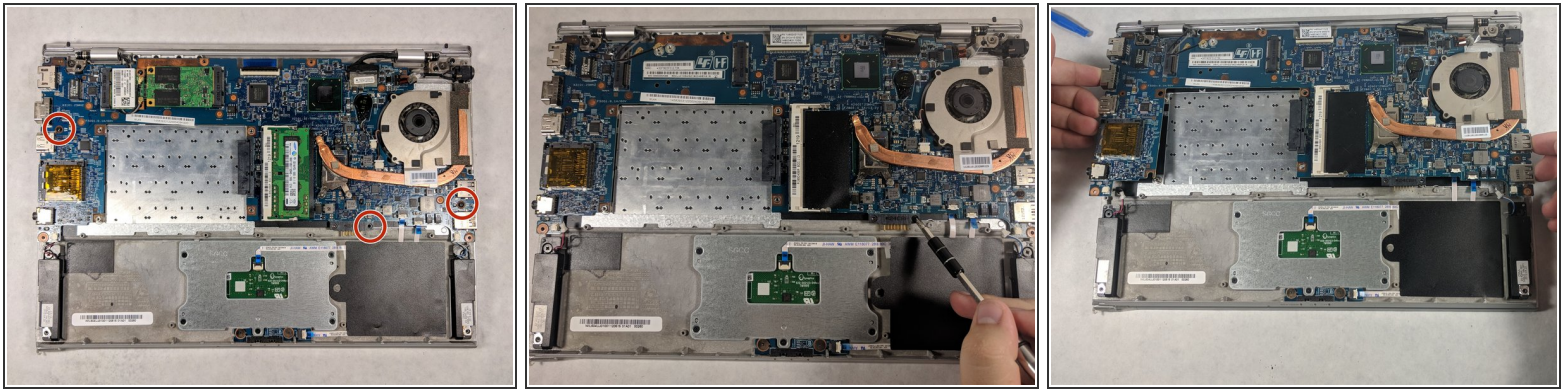


## Step 16



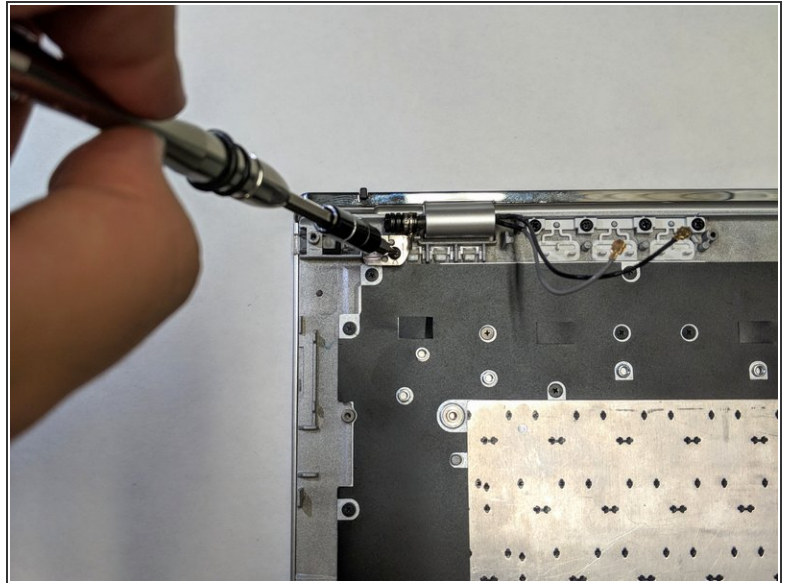
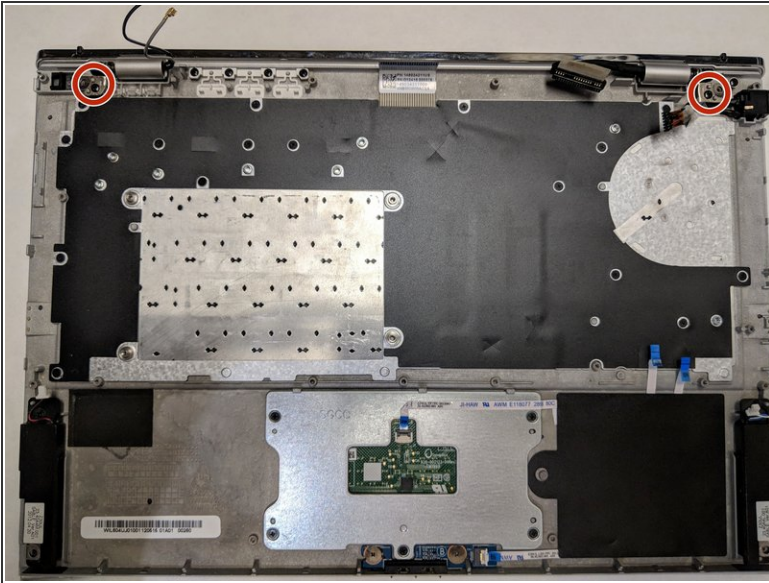
- Locate the display cable connecting the keyboard to the motherboard.
- Grab the clear plastic tab attached to the top of the connector, and pull away from the motherboard to separate it from the board.

## Step 17



- Unscrew the three 5mm Phillips head screws holding the motherboard to the laptop.
- Grab the edges of the motherboard and lift it slowly up and away from the back panel of the laptop.
- ⓘ It's best to lift the board away from the case by using the USB headers on the sides for leverage. Be careful when touching components on the motherboard, as oils from your skin can cause them to short out.

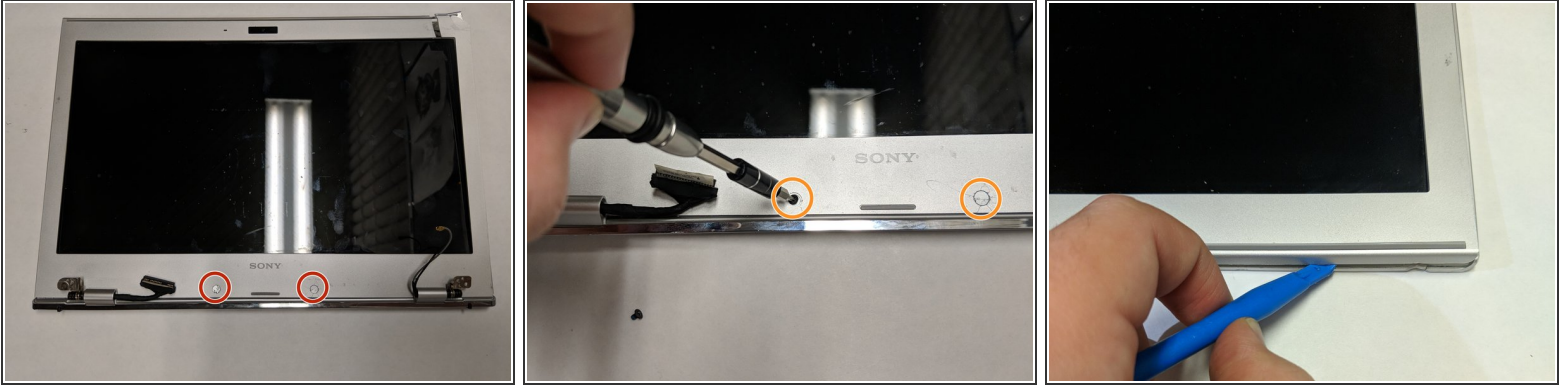
## Step 18 — Display



- Unscrew the two 5mm Phillips head screws that secure the two display hinges to the back panel of the laptop.
- Carefully lift the metal hinges that secure the top panel to the bottom panel of the laptop.
- ⓘ This will take a bit of force if you're lifting the hinges directly. We've found that lifting the bottom panel of the laptop as a whole gives a bit more leverage and makes this step easier.
- Slowly slide the bottom panel of the laptop out from under the metal hinges. Your display panel will now be separated from the rest of your device.



## Step 19



- Locate the round plastic covers and pry them off with a thin pry tool or pair of tweezers to reveal two 5mm Phillips heads screws.
- Unscrew the two 5mm Phillips head screws.
- Using a prying tool, pry around the edge of the front screen panel, separating the plastic edges of the panel.

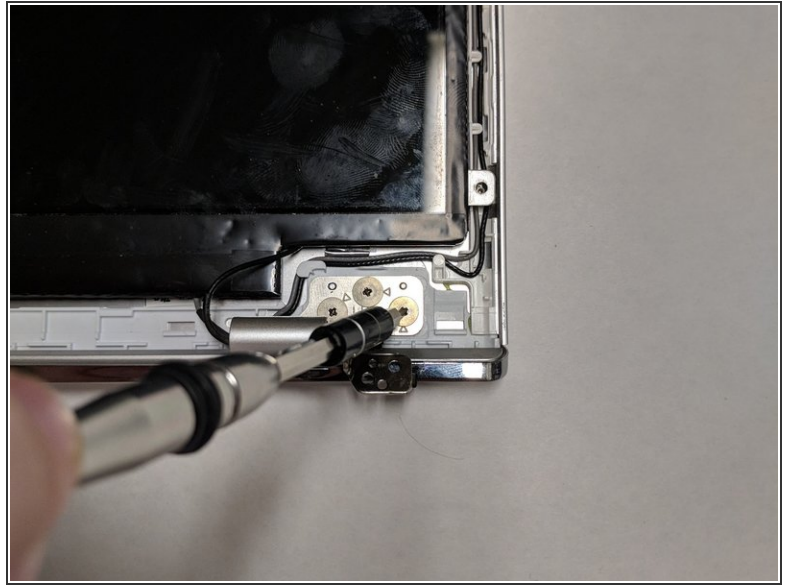
⚠ Take your time when using the prying tool as there is a possibility of damaging the plastic frame.

## Step 20



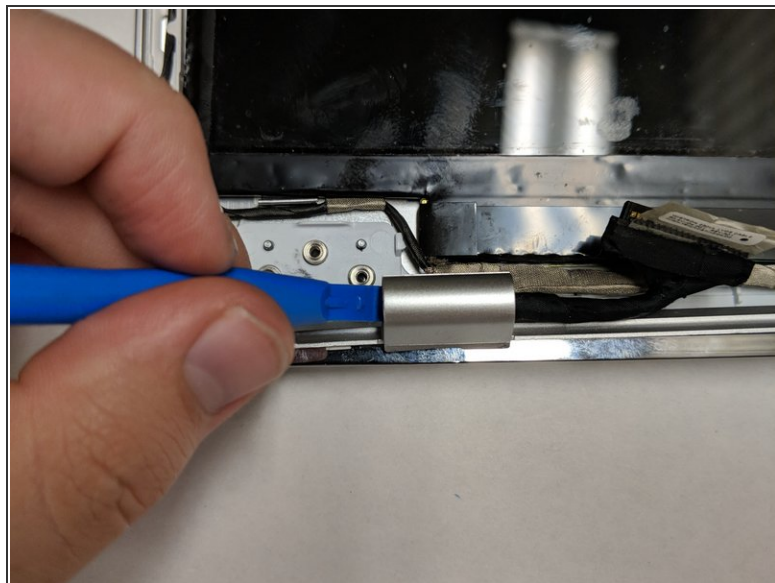
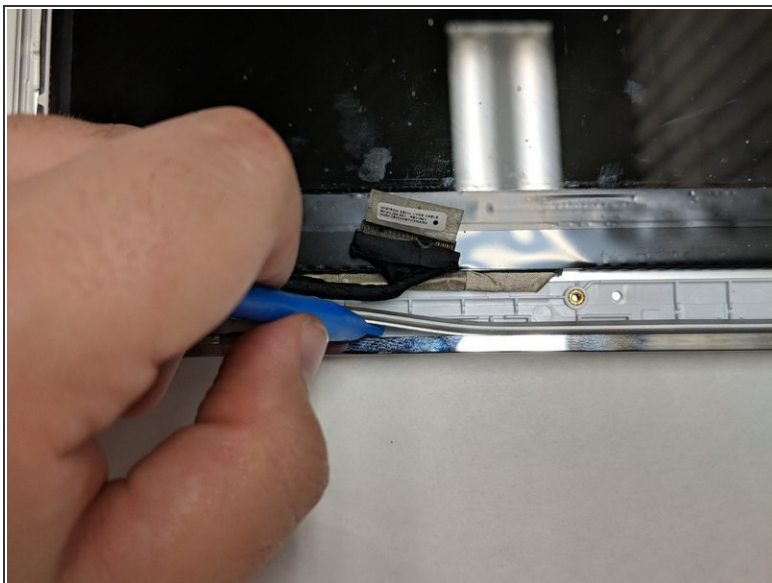
- Unscrew the four 3mm Phillips head screws that secure the display to the plastic frame.

## Step 21



- Unscrew the six 3mm Phillips head screws that attach the hinges to the display panel.

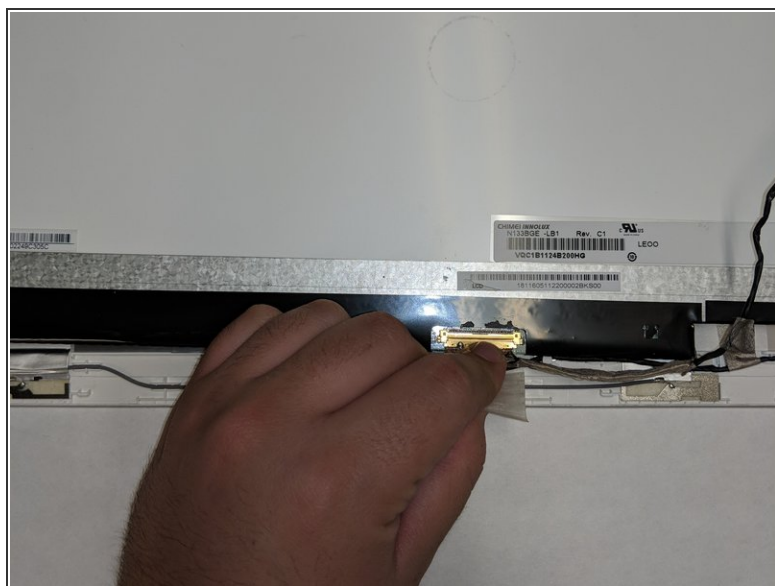
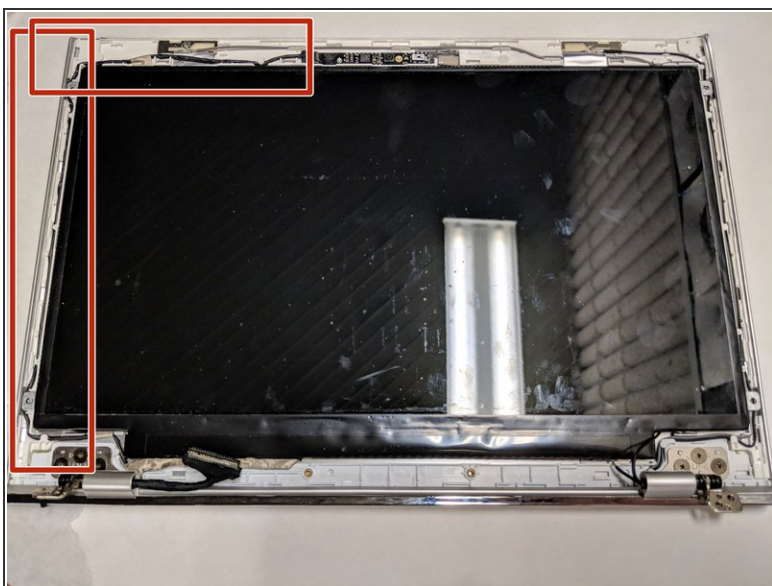
## Step 22



- Using a pry tool, separate the plastic housing that holds the hinges in place from the display panel.
  - Pry open the housing of the display cable in order to completely remove it from the top panel of the laptop.
- i** While it isn't necessary to remove the plastic housing mentioned in the first part of this step, it helps prying open the display cable housing by offering more space to work.



## Step 23



- Separate the display cable by removing it from the plastic clips that hold it in place along the edge of the display panel.
- After the cable is detached from the panel, lift the display up and remove it from the display panel.

To reassemble your device, follow these instructions in reverse order.