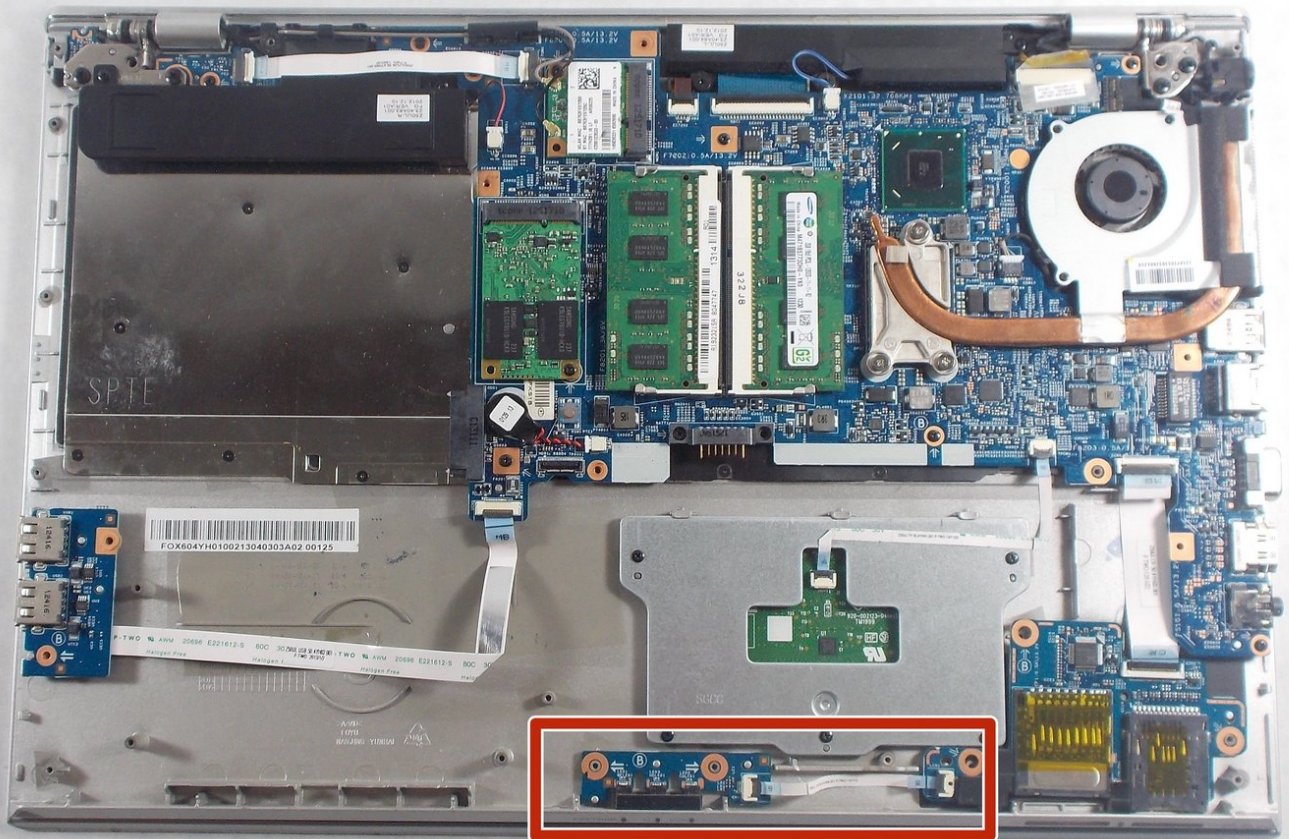




# Sony Vaio SVT151A11L Multimedia Card Replacement

How to replace the multimedia card inside the Sony Vaio SVT151A11L.

Written By: Namuundari Zorigtbaatar



---

## INTRODUCTION

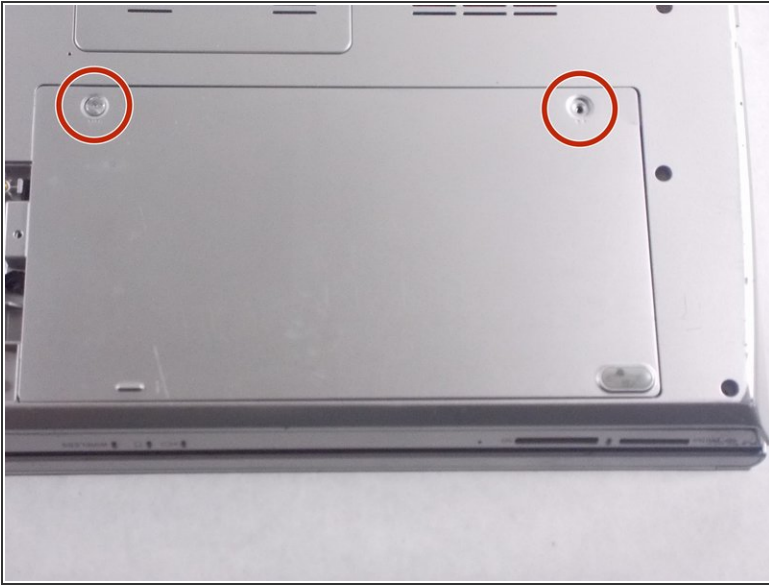
A multimedia card is a memory card that is used to store data on your device and is attached to the reader inside the laptop.



### TOOLS:

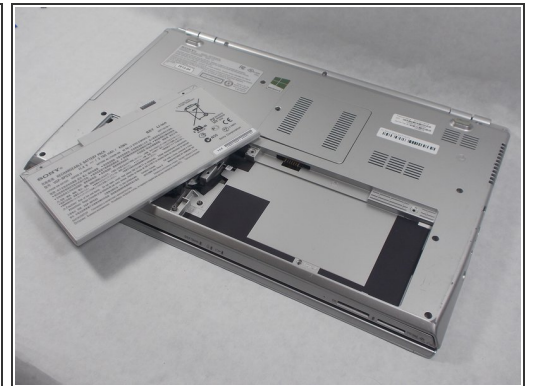
- [JIS #0 Screwdriver](#) (1)
  - [iFixit Opening Tools](#) (1)
-

## Step 1 — Battery



- Flip the laptop over so that the battery on the underside of the device is revealed.
- Unscrew the two 11mm slotted silver screws that can be found at the top of the battery.

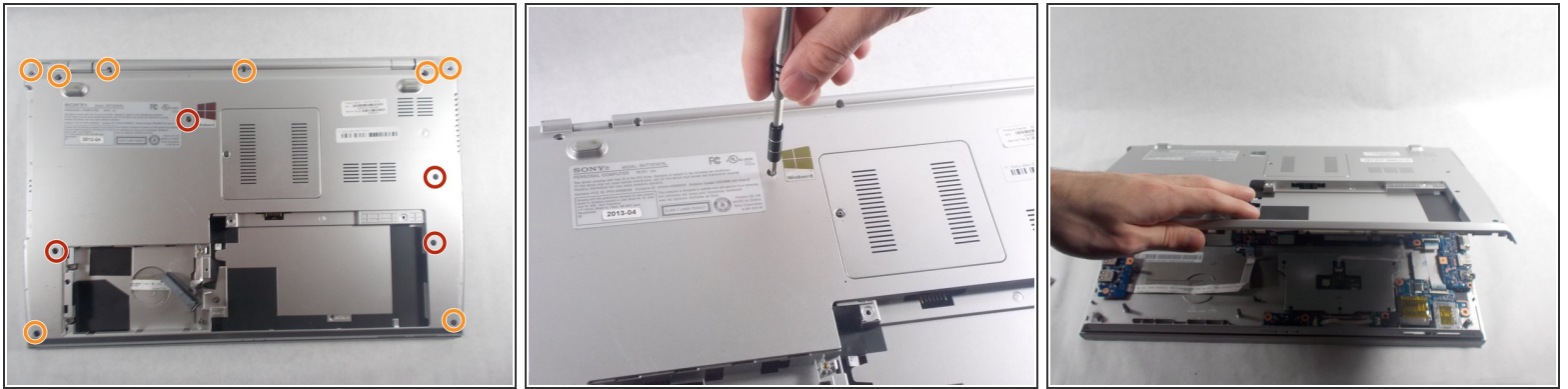
## Step 2



- Wedge the plastic opening tool between the back panel and the battery on the top left side of the device.
- Push down on the plastic opening tool until the battery lifts from the back of the laptop.
- Grab the battery and remove it from the device.



## Step 3 — Back Panel



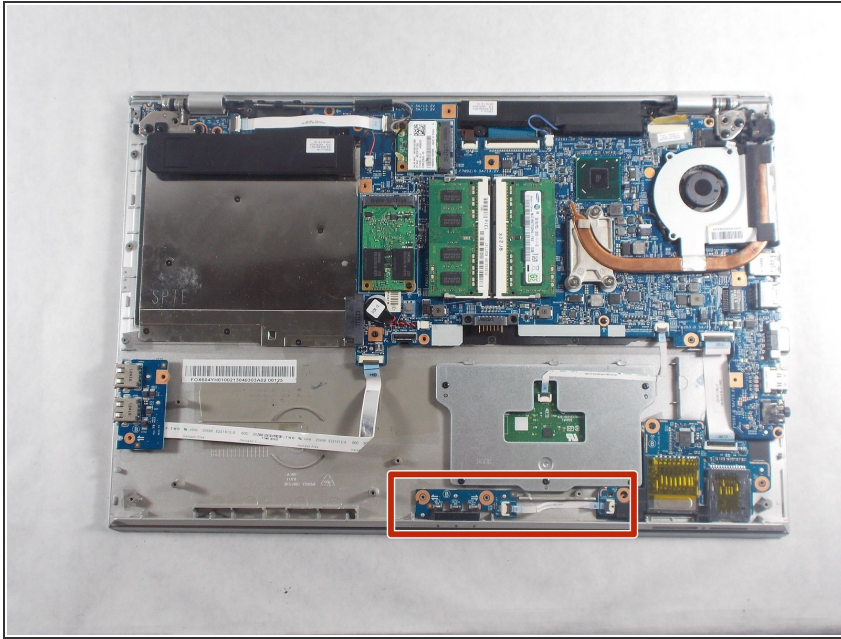
- Unscrew the three 4mm screws using a JIS #0 screwdriver.
- Unscrew the eight 7 mm screws using a JIS #0 screwdriver.
- Grab and lift the edge of the panel to pull it free from the rest of the computer.

## Step 4



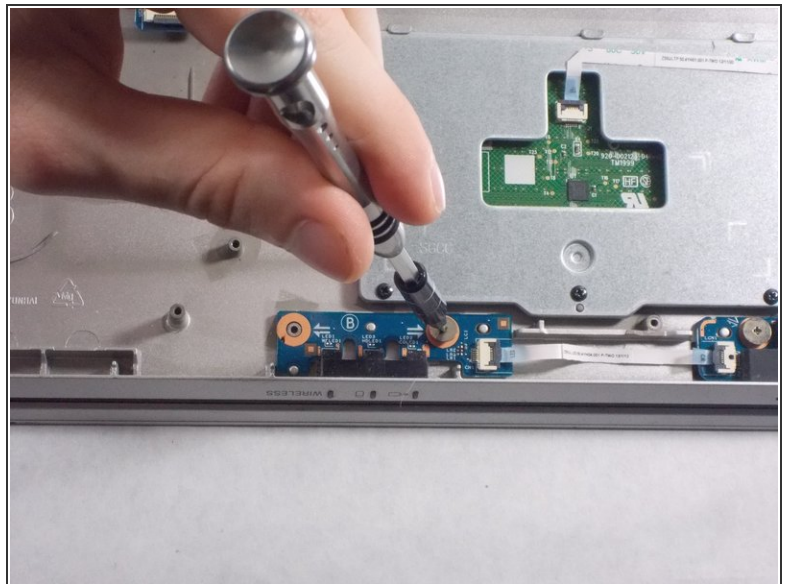
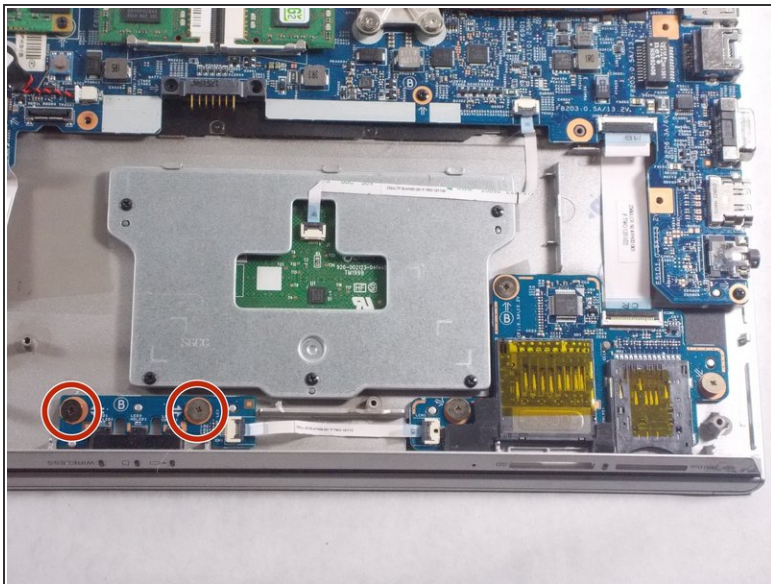
- Grab the disk drive located at the edge of the computer and pull it out.
- Unscrew the three 7 mm screws with a JIS #0 screwdriver.

## Step 5 — Multimedia Card



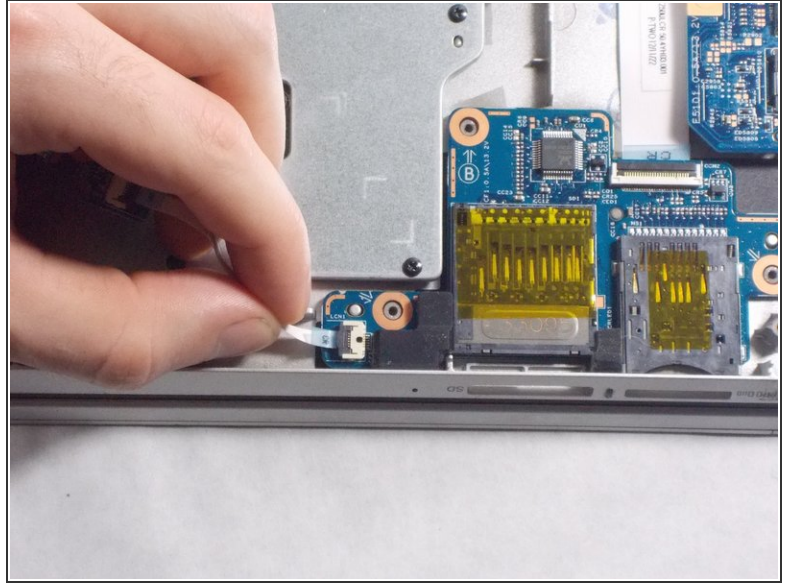
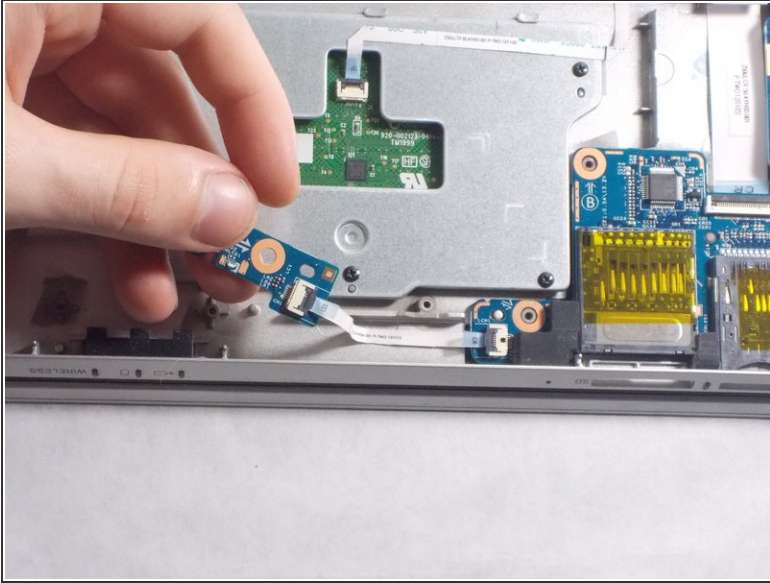
- Get unobstructed access to the multimedia card.

## Step 6



- Unscrew the two 2mm screws from the board using JIS #0 screwdriver.

## Step 7



- Lift up multimedia card.
- Pull out ribbon cable from connected board.

To reassemble your device, follow these instructions in reverse order.