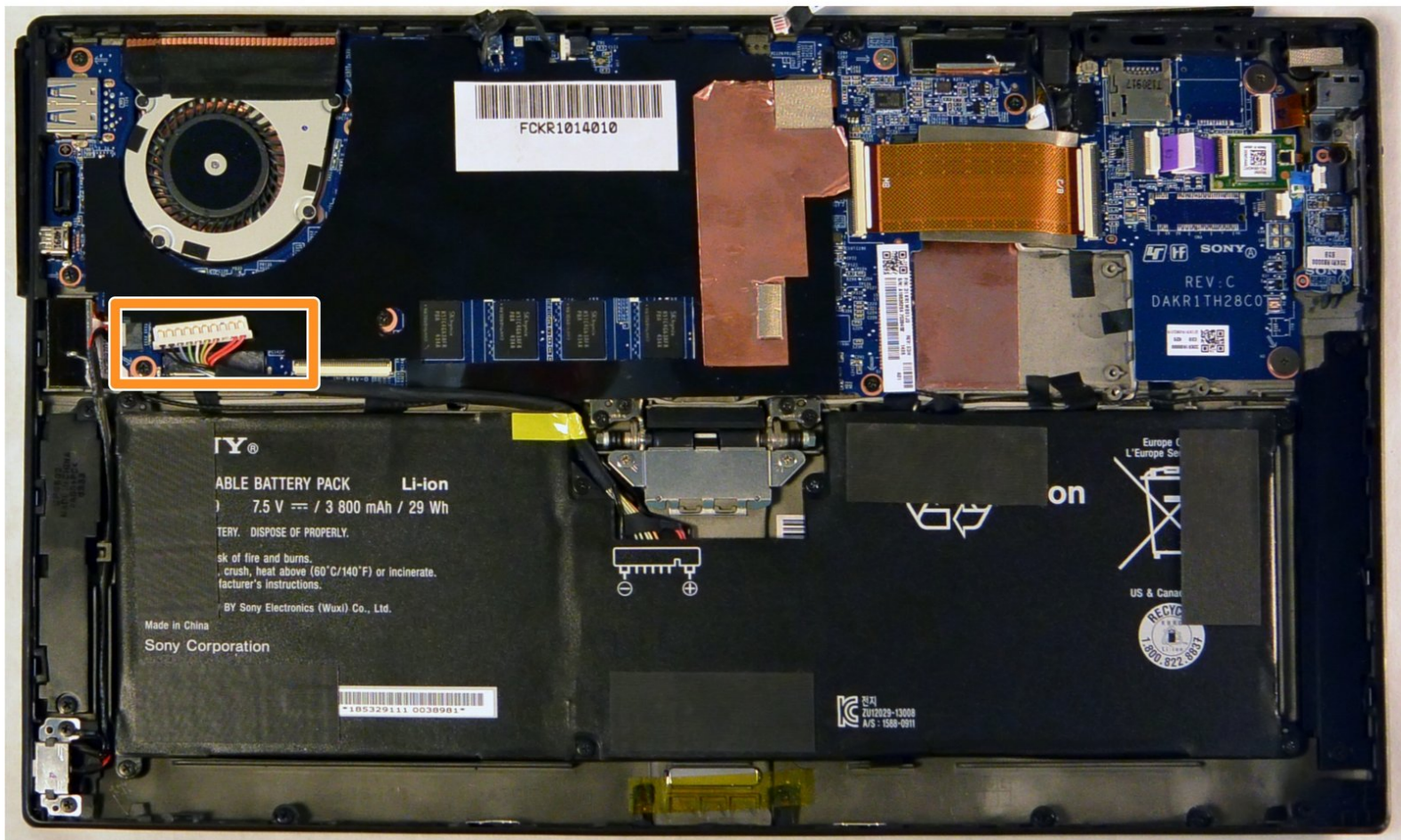




Sony Vaio Tap 11 Battery Replacement

This guide replaces the battery.

Written By: Alexander Bridges



INTRODUCTION

If your device no longer takes a charge, replacing the battery may breathe new life into the tablet.



TOOLS:

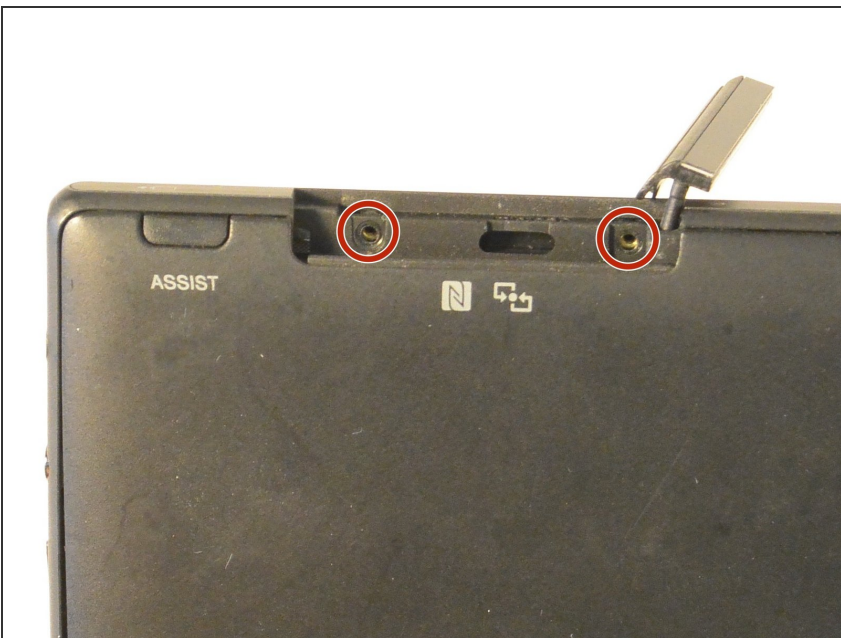
- [Phillips #000 Screwdriver](#) (1)
 - [Suction Handle](#) (1)
-

Step 1 — Screen Assembly



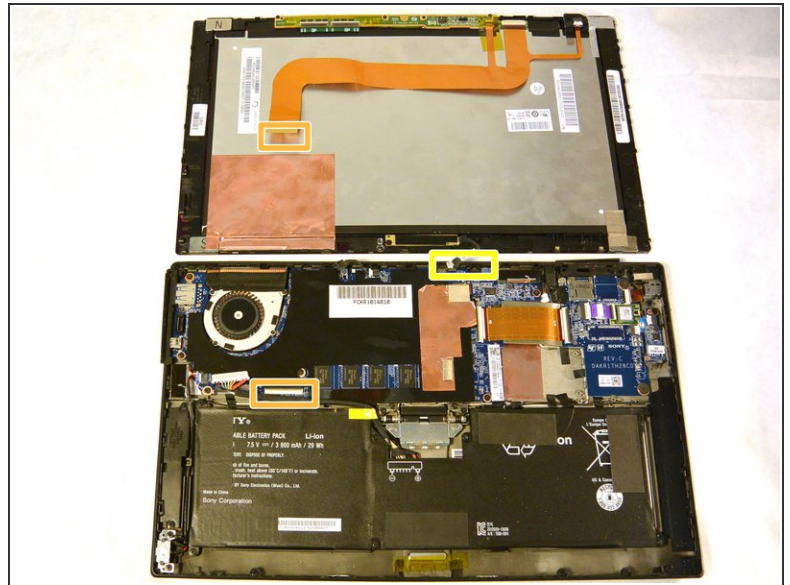
- Begin by popping open the HDMI/USB port cover on the left edge.
- Remove the three #000 headed, 3 mm long screws located underneath the port cover.

Step 2




- There are two #000 headed, 3 mm long screws under a similar cover covering the Micro SD slot on the top side of the device.
- Remove the two screws beneath the Micro SD card slot cover.

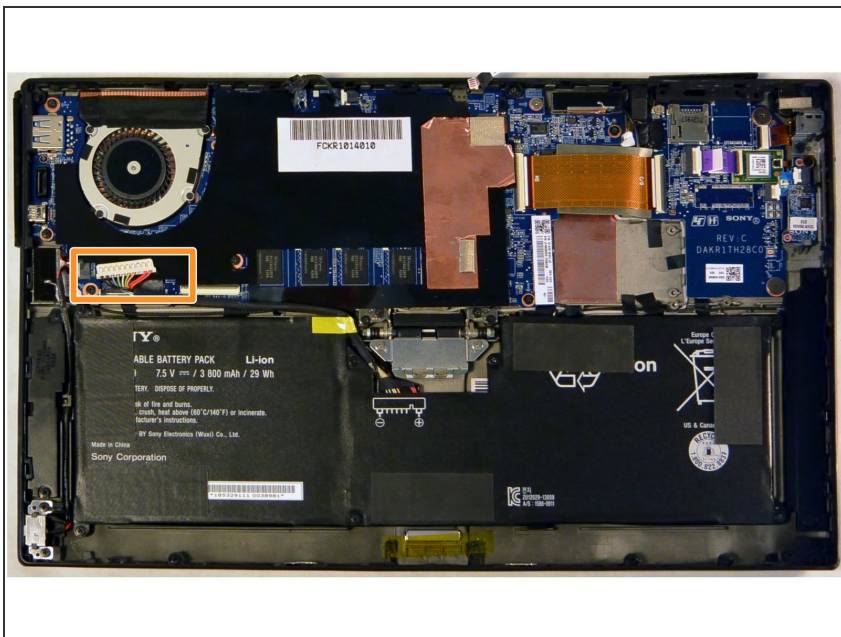
Step 3



- Attach the suction cup to the top right area of the screen.
- Pull to remove the screen from the rest of the device.

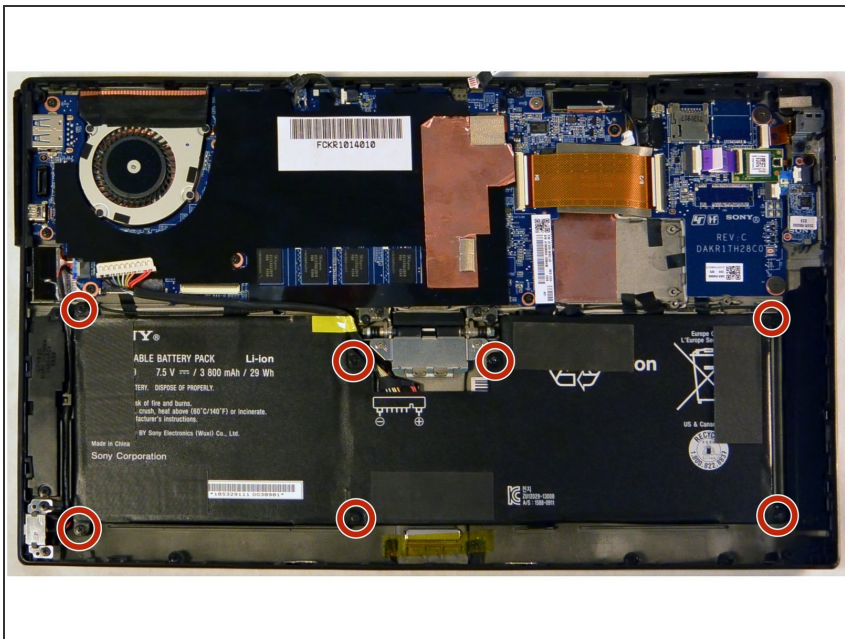
 Watch out for the front camera cable connected to the top middle of the device. The display ribbon cable should just slide out.

Step 4 — Battery



- Disconnect the battery from the motherboard by pulling out the cable below the fan.

Step 5



- Remove the seven 3 mm Phillips #000 screws that hold the battery in place.
- Carefully remove the battery from the back assembly.

To reassemble your device, follow these instructions in reverse order.