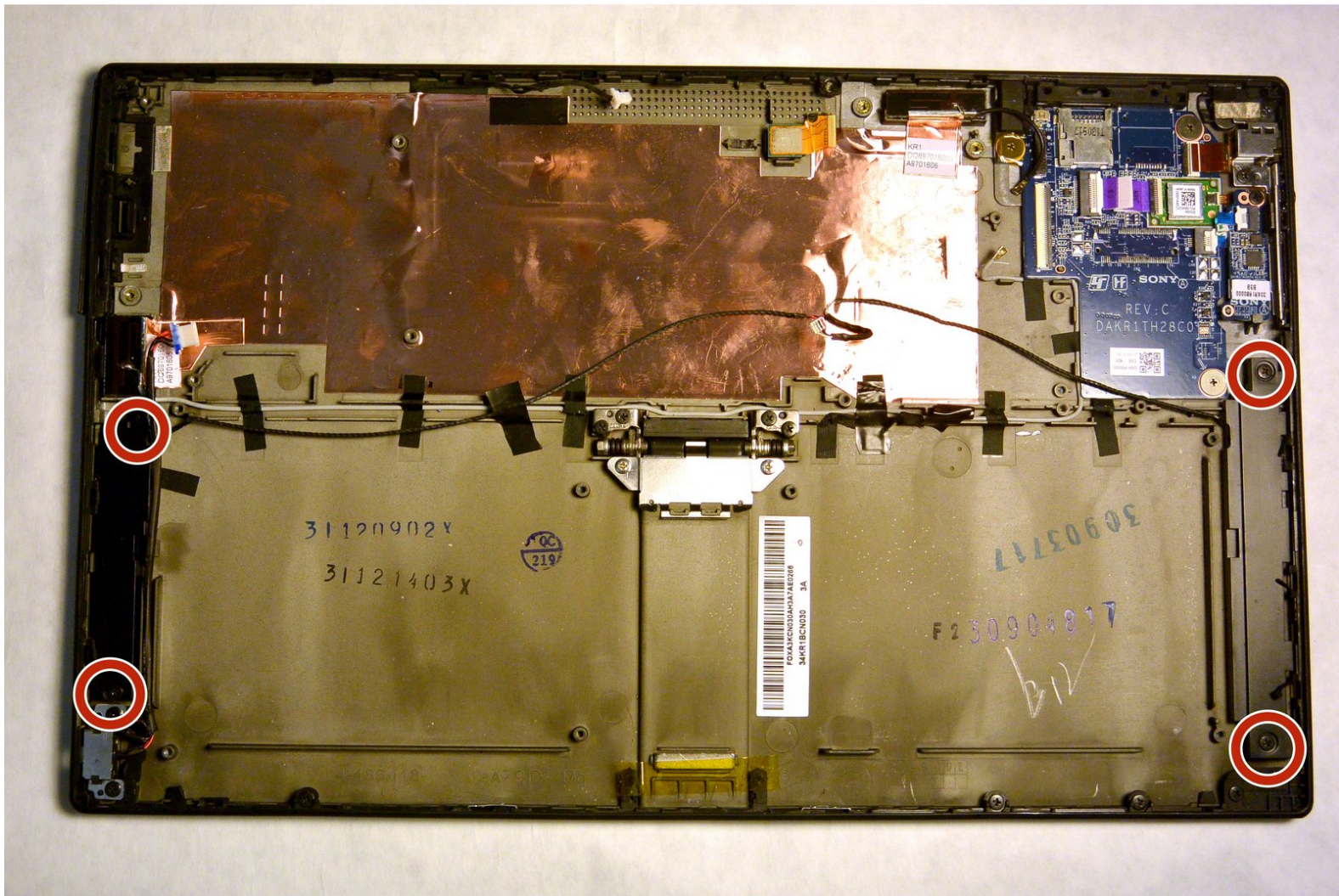




# Sony Vaio Tap 11 Internal Speakers Replacement

In this guide you will remove and replace the internal speakers.

Written By: Kevin



## INTRODUCTION

This guide will provide detailed information in regards to the internal speakers and how to replace them. This may be necessary if there is any issue with sound volume or quality from the device that isn't present when using headphones.



### TOOLS:

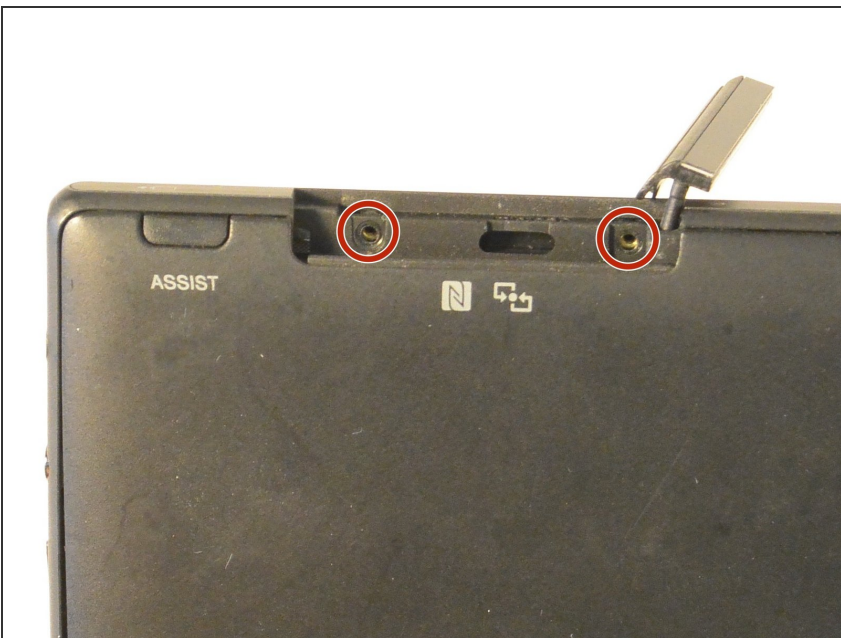
- [Phillips #000 Screwdriver](#) (1)
  - [Suction Handle](#) (1)
-

## Step 1 — Screen Assembly



- Begin by popping open the HDMI/USB port cover on the left edge.
- Remove the three #000 headed, 3 mm long screws located underneath the port cover.

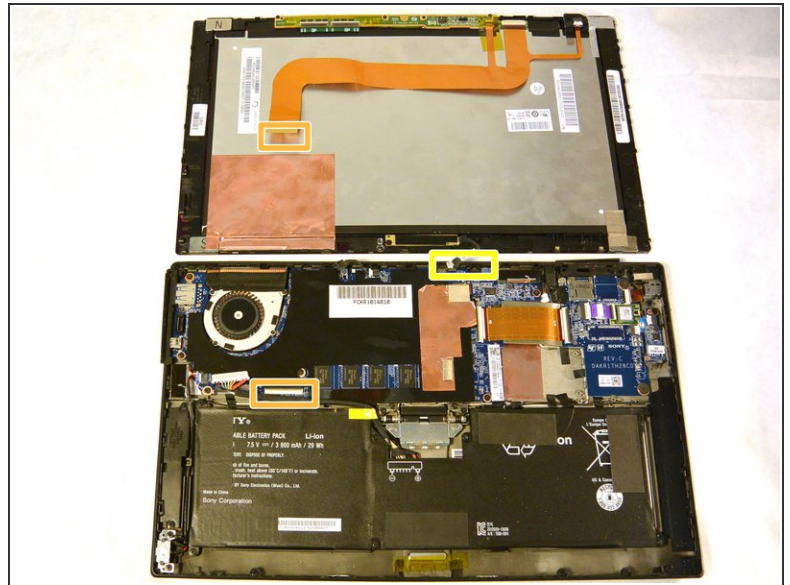
## Step 2



- There are two #000 headed, 3 mm long screws under a similar cover covering the Micro SD slot on the top side of the device.
- Remove the two screws beneath the Micro SD card slot cover.



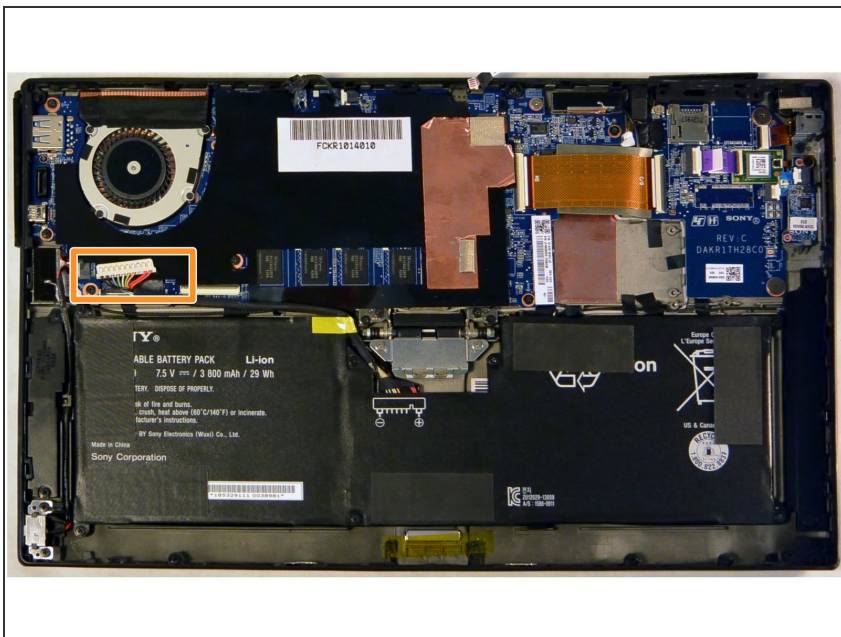
## Step 3



- Attach the suction cup to the top right area of the screen.
- Pull to remove the screen from the rest of the device.

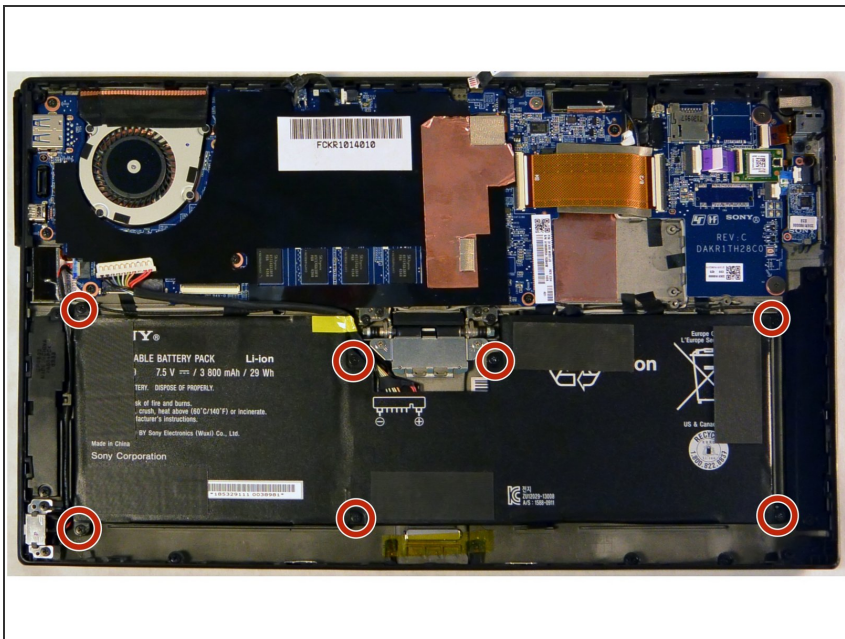
⚠ Watch out for the front camera cable connected to the top middle of the device. The display ribbon cable should just slide out.

## Step 4 — Battery



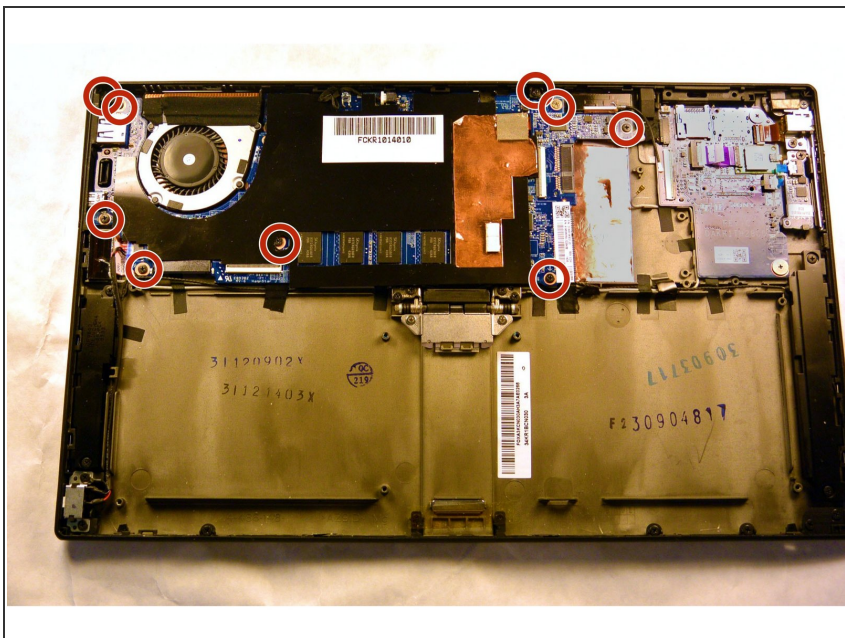
- Disconnect the battery from the motherboard by pulling out the cable below the fan.

## Step 5



- Remove the seven 3 mm Phillips #000 screws that hold the battery in place.
- Carefully remove the battery from the back assembly.

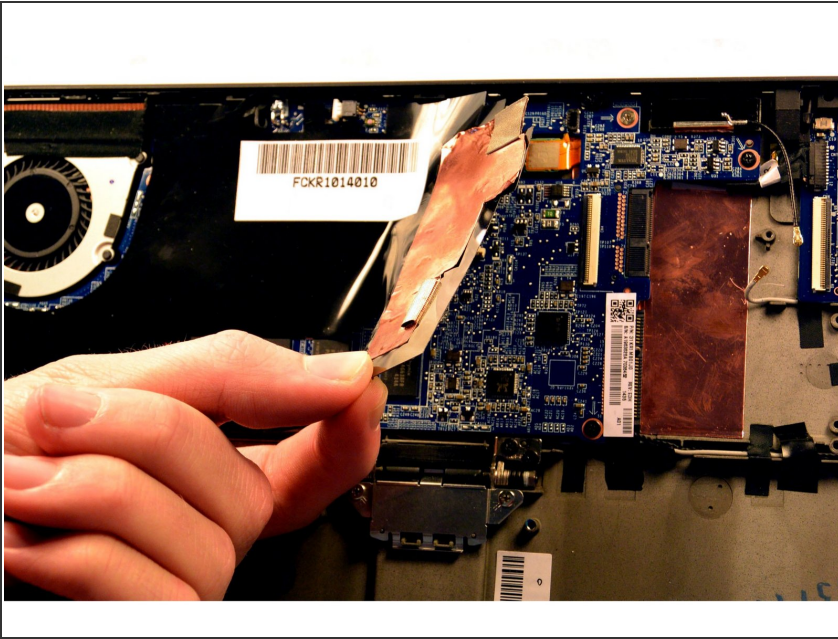
## Step 6 — Motherboard



- Remove the nine 3 mm Phillips #000 screws holding in the motherboard.

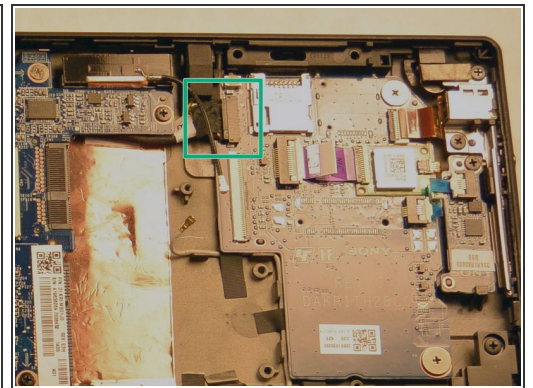
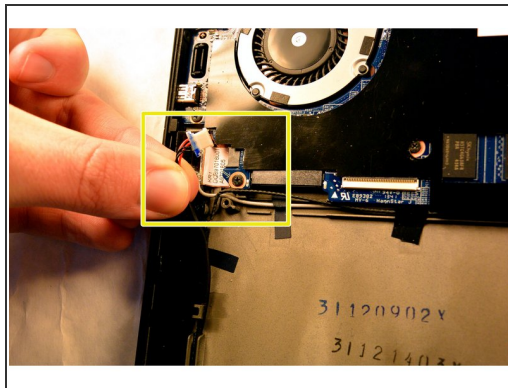
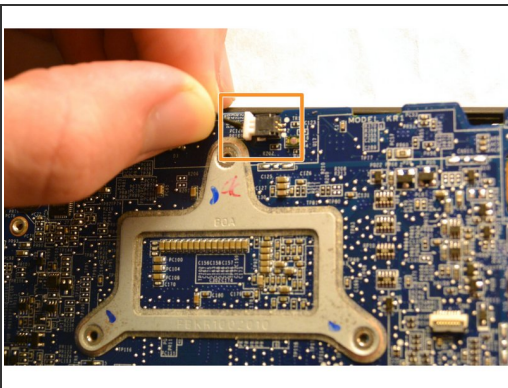


## Step 7



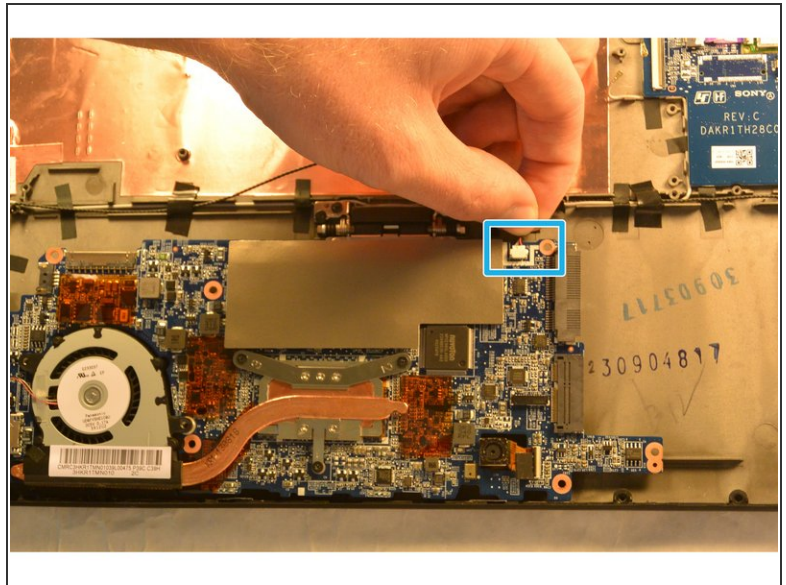
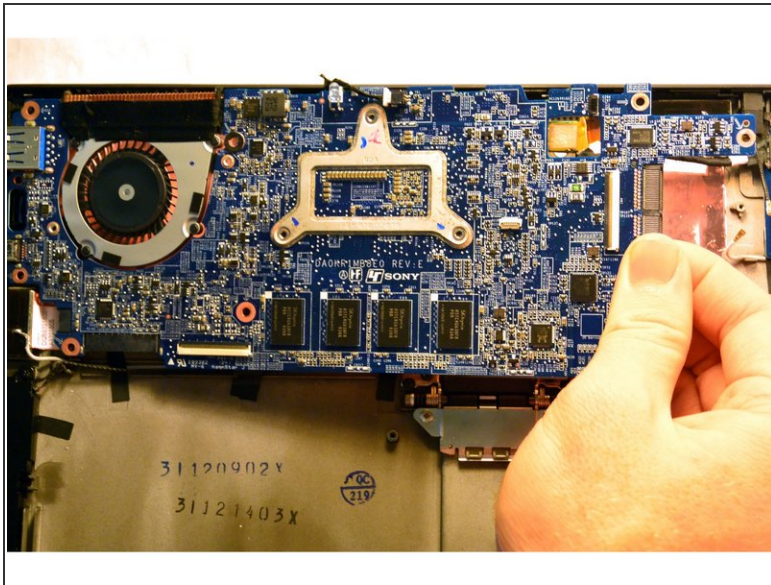
- Remove the black plastic dust shield by gently pulling it up.
- ⓘ You'll want to keep the sticky side up so you can replace it when reassembling. This part also functions as a shield for the sensitive camera component!

## Step 8



- ⓘ Before removing the motherboard, there are a few cables to disconnect.
- Disconnect the cable connected to the top of the display.
- Disconnect the power jack connector on the left side of the screen.
- Disconnect the daughterboard connector located above and to the right of the WiFi chip slot.

## Step 9



- Gently pull the motherboard out by pulling from the right side of the board and flip it so that the motherboard now sits where the battery was and the underside is now visible.

⚠ There is still one cable to remove!

- Remove the speaker connector located next to the SSD slot.
- You may now remove the motherboard from the device.

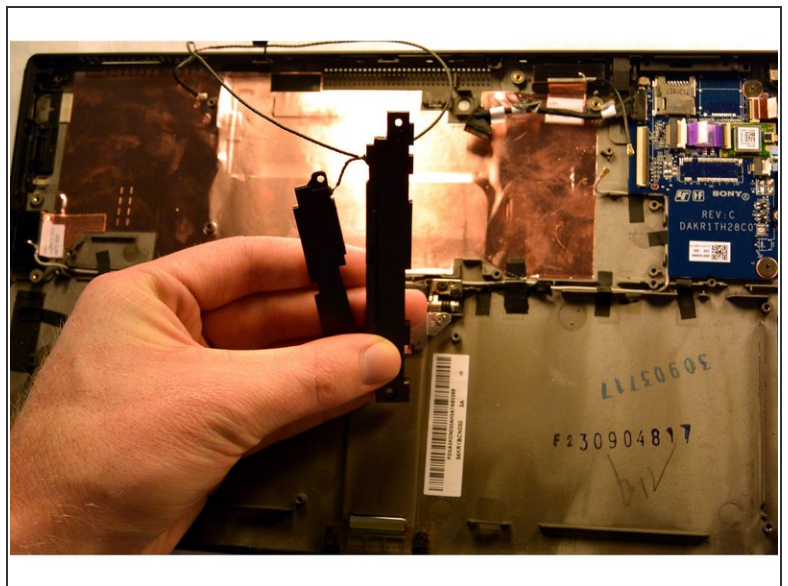
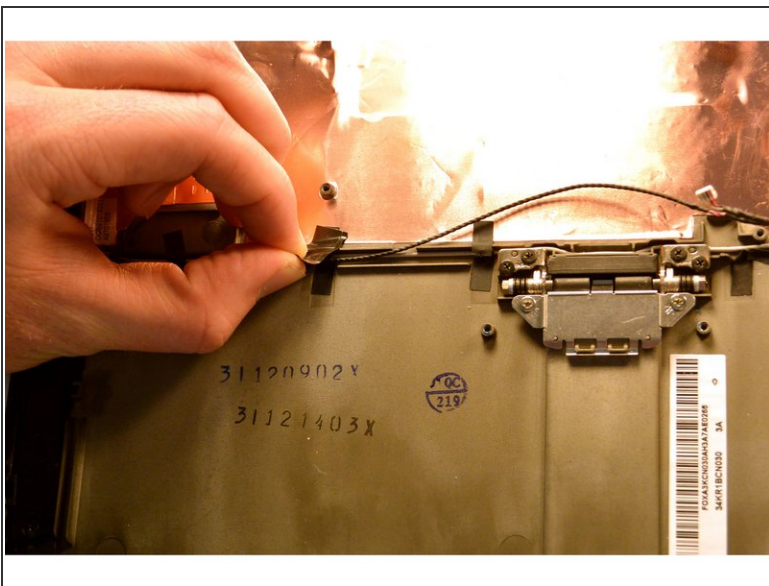


## Step 10 — Internal Speakers



- Remove the four 3 mm Phillips #000 screws from the upper and lower ends of each speaker module.

## Step 11



- Once the speakers are loose, follow the wires and remove any tape holding them to the assembly.
- ⓘ The speaker connector should have been disconnected in the motherboard prerequisite.
- The speaker wiring and assembly should now be completely free to remove from the tablet assembly.

This document was generated on 2019-09-28 03:23:41 AM (MST).



To reassemble your device, follow these instructions in reverse order.