



Sony Vaio Tap 11 Screen Assembly Replacement

Follow this guide to repair a device with a broken or cracked LCD or glass panel.

Written By: Alexander Bridges



INTRODUCTION

In this guide, you will remove the 5 screws holding the device together. In addition, this guide details the various cables connecting the screen to the motherboard.

TOOLS:

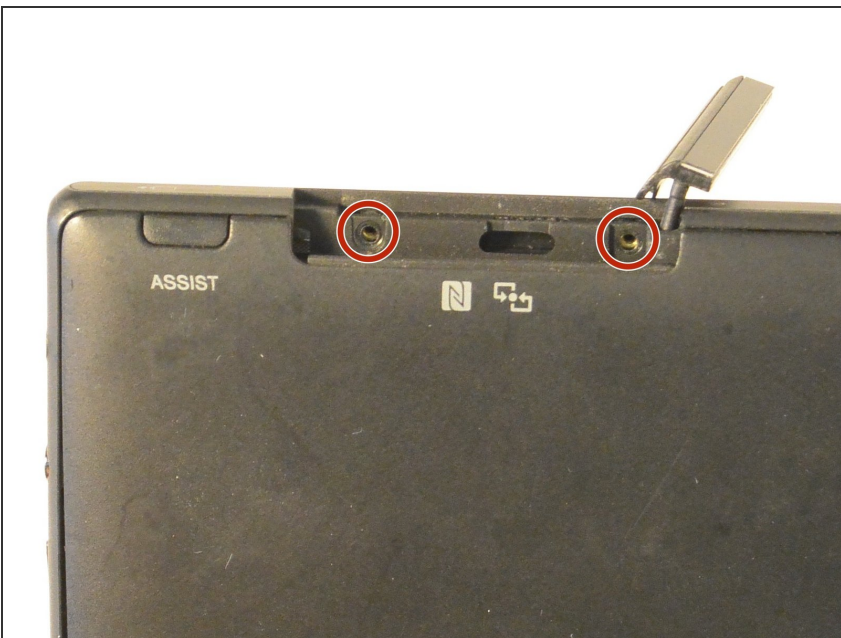
- [Phillips #000 Screwdriver](#) (1)
 - [Suction Handle](#) (1)
-

Step 1 — Screen Assembly



- Begin by popping open the HDMI/USB port cover on the left edge.
- Remove the three #000 headed, 3 mm long screws located underneath the port cover.

Step 2




- There are two #000 headed, 3 mm long screws under a similar cover covering the Micro SD slot on the top side of the device.
- Remove the two screws beneath the Micro SD card slot cover.

Step 3



- Attach the suction cup to the top right area of the screen.
- Pull to remove the screen from the rest of the device.

 Watch out for the front camera cable connected to the top middle of the device. The display ribbon cable should just slide out.

To reassemble your device, follow these instructions in reverse order.