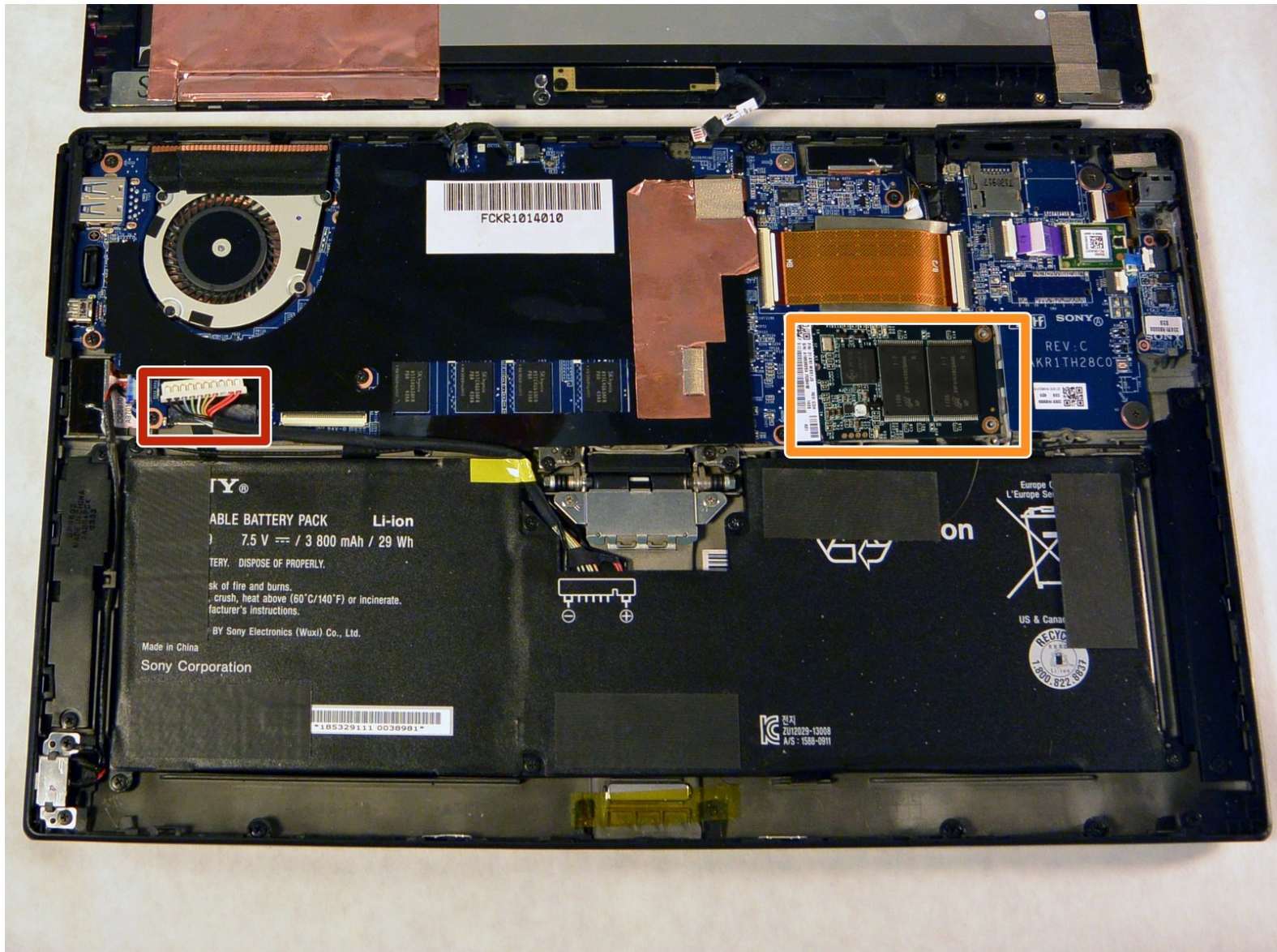




Sony Vaio Tap 11 Solid State Disk Replacement

This guide will take you through replacing the solid state disk or SSD. This will give the tablet more storage.

Written By: Alexander Bridges



INTRODUCTION

The SSD is what stores the operating system, program executables, and the personal files of every user. If the device is constantly displaying warnings about disk usage, replacing with a larger capacity module will allow for additional file storage.



TOOLS:

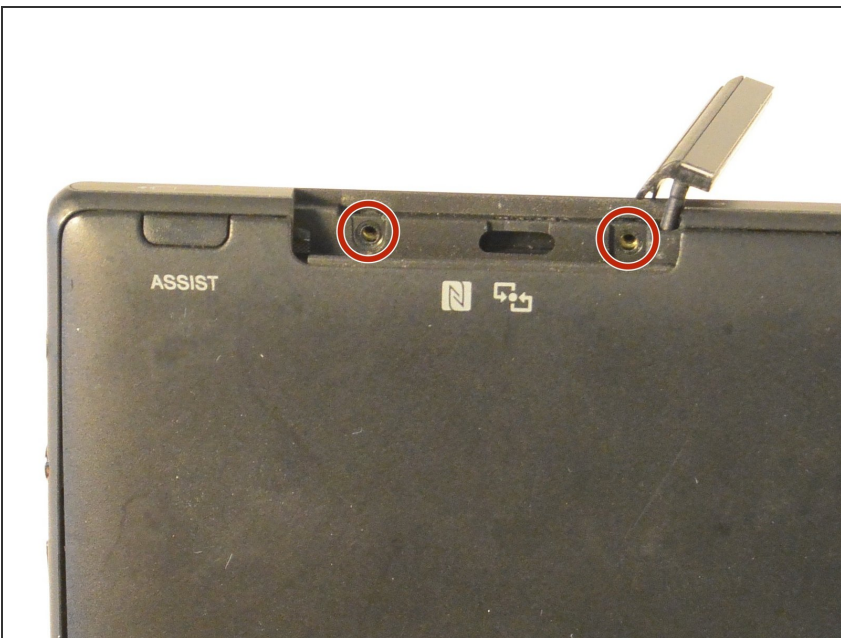
- [Phillips #000 Screwdriver](#) (1)
 - [Suction Handle](#) (1)
-

Step 1 — Screen Assembly



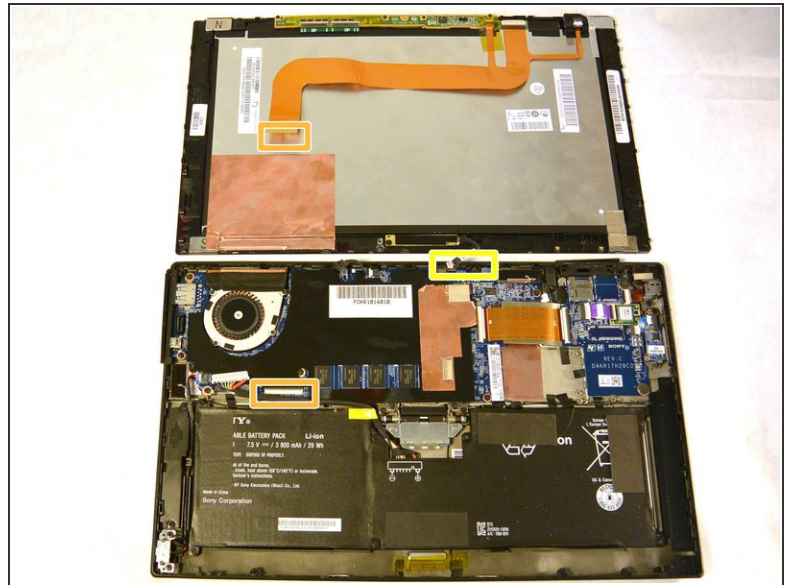
- Begin by popping open the HDMI/USB port cover on the left edge.
- Remove the three #000 headed, 3 mm long screws located underneath the port cover.

Step 2



- There are two #000 headed, 3 mm long screws under a similar cover covering the Micro SD slot on the top side of the device.
- Remove the two screws beneath the Micro SD card slot cover.

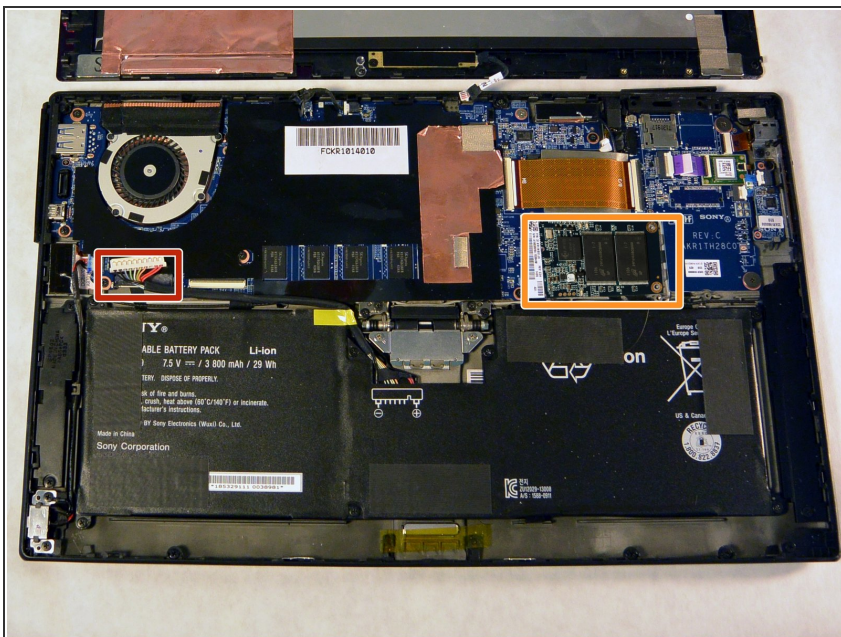
Step 3



- Attach the suction cup to the top right area of the screen.
- Pull to remove the screen from the rest of the device.

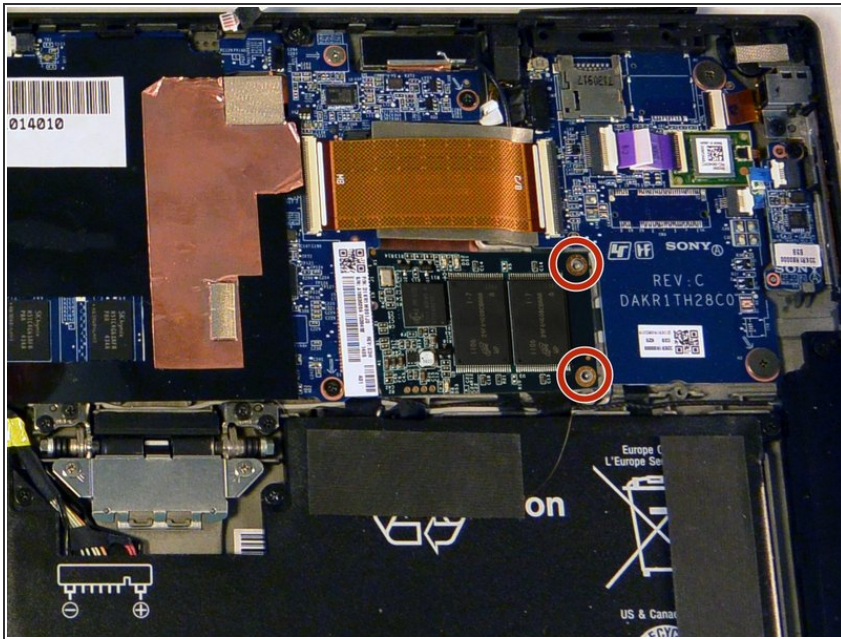
⚠ Watch out for the front camera cable connected to the top middle of the device. The display ribbon cable should just slide out.

Step 4 — Solid State Disk



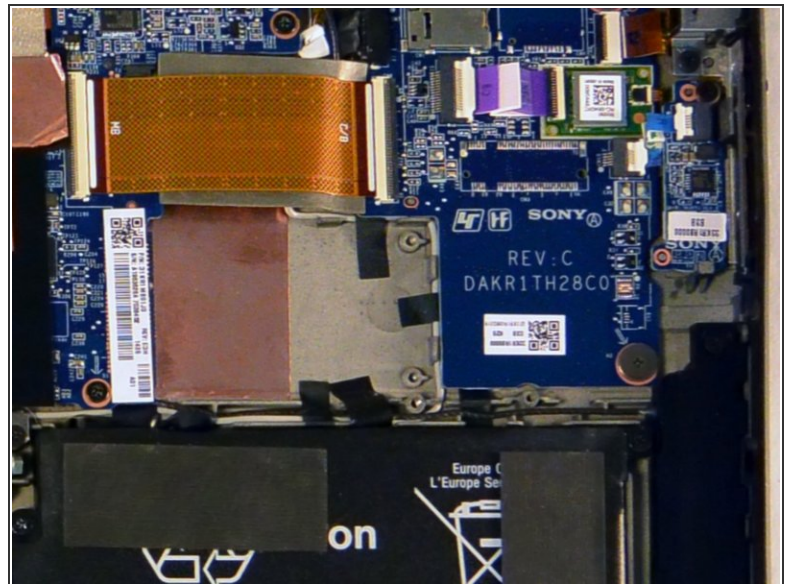
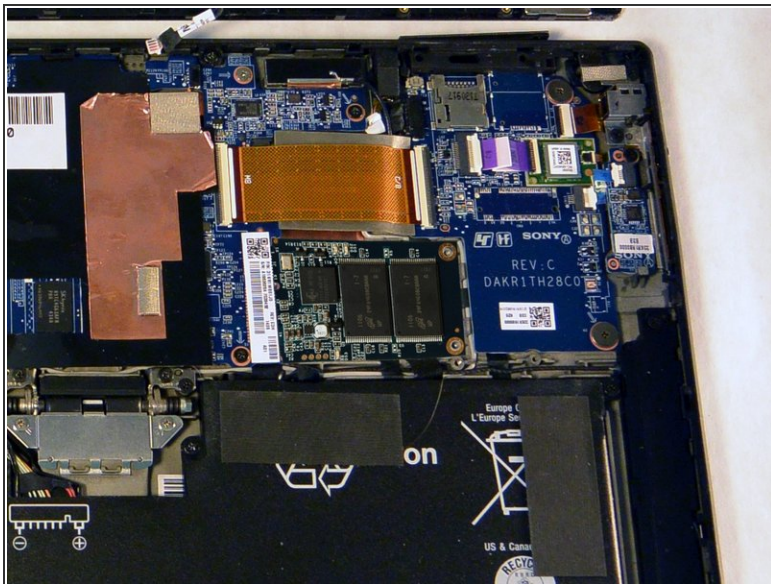
- ⚠ Unplug the battery connector located beside the fan.
- ℹ Locate the SSD on the right side of the device, above the battery and beneath the WiFi chip.

Step 5



- Remove the two 3 mm Phillips #000 screws from the right edge of the SSD.

Step 6



- Pull the SSD towards the right and slightly up, removing it from the back assembly.

To reassemble your device, follow these instructions in reverse order.