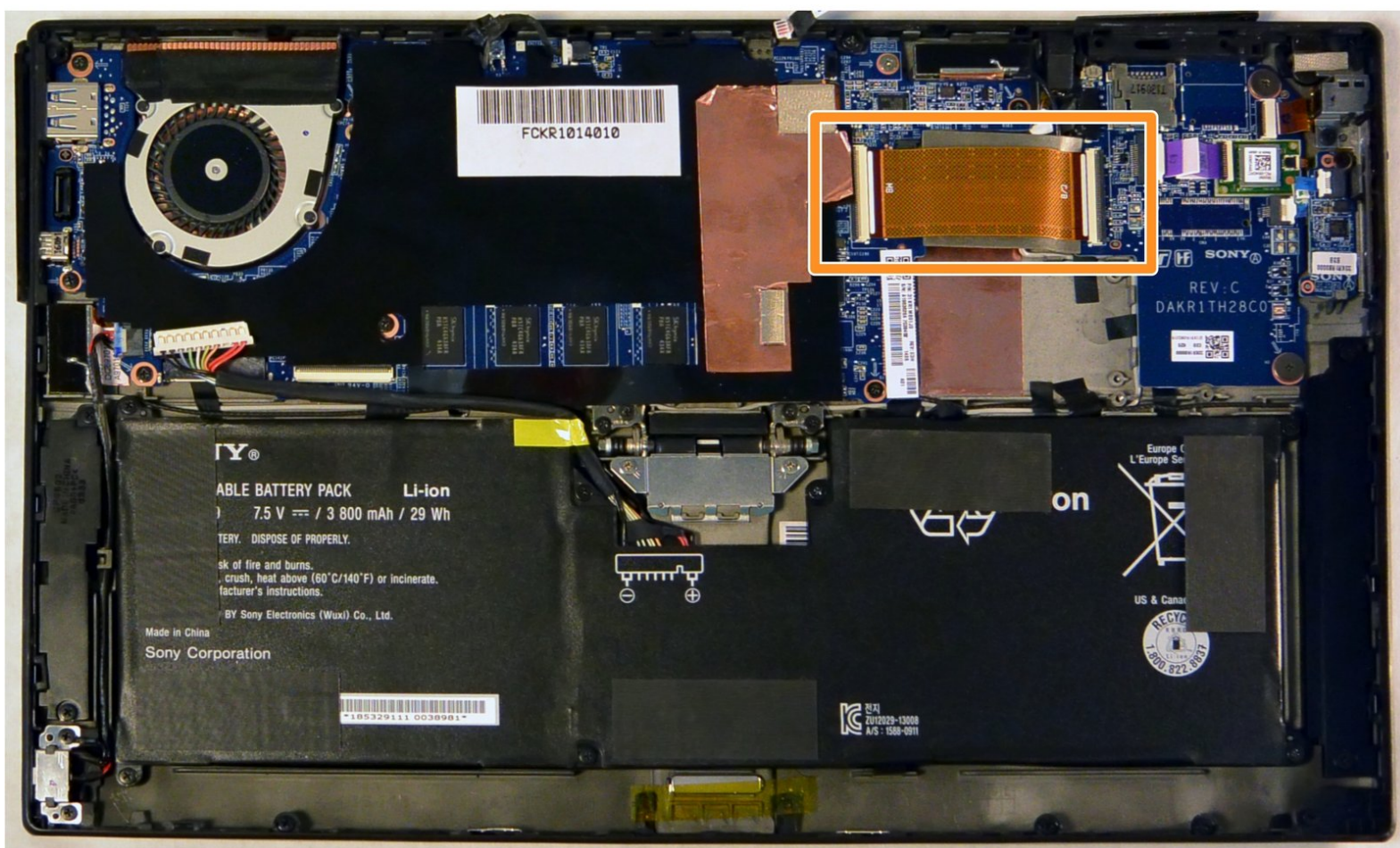




Sony Vaio Tap 11 Wifi Module Replacement

As WiFi technology changes and evolves, it may be necessary to update your computer hardware to take advantage of all the new features. This guide may also be useful if your WiFi module is broken, too.

Written By: Alexander Bridges





TOOLS:

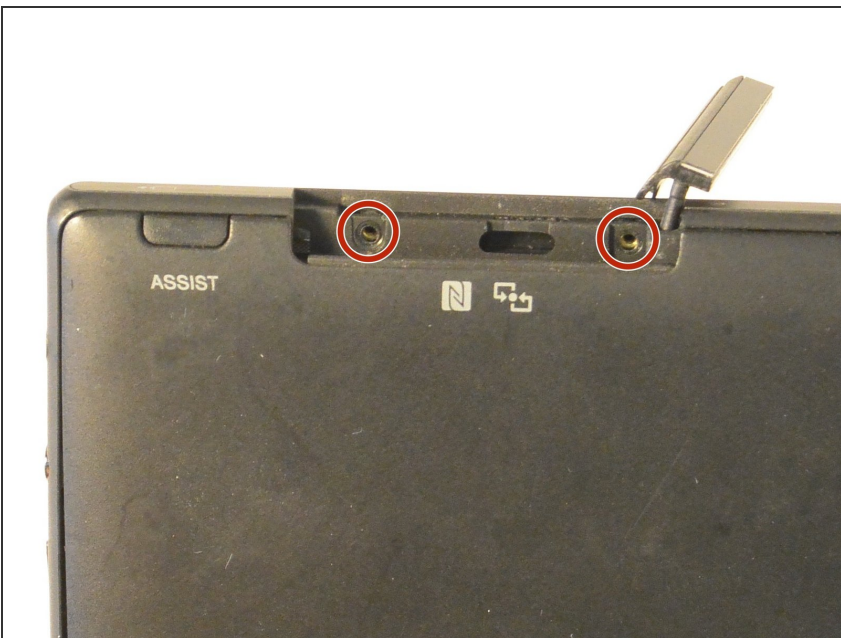
- [Phillips #000 Screwdriver](#) (1)
 - [Suction Handle](#) (1)
-

Step 1 — Screen Assembly



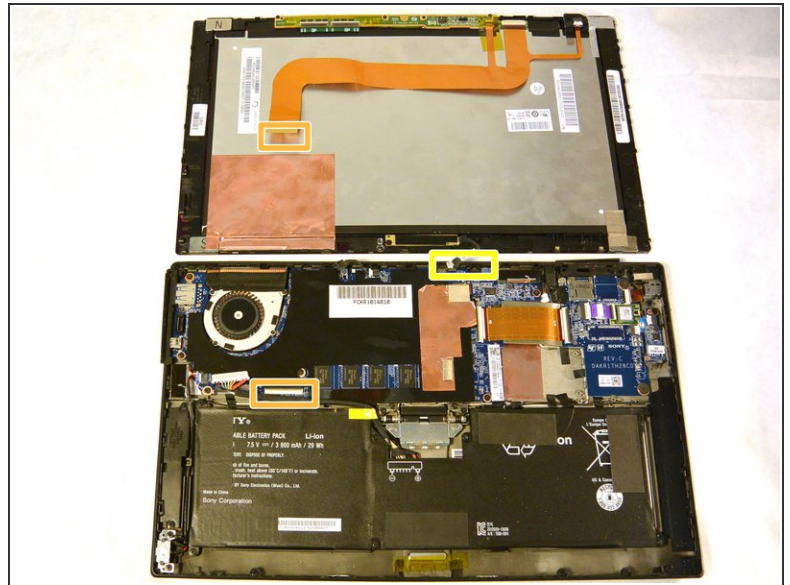
- Begin by popping open the HDMI/USB port cover on the left edge.
- Remove the three #000 headed, 3 mm long screws located underneath the port cover.

Step 2



- There are two #000 headed, 3 mm long screws under a similar cover covering the Micro SD slot on the top side of the device.
- Remove the two screws beneath the Micro SD card slot cover.

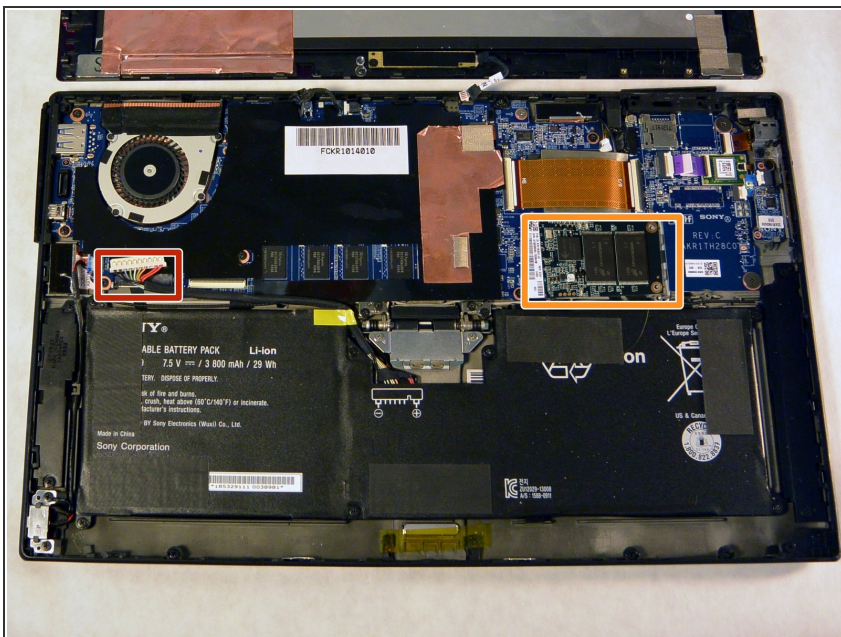
Step 3



- Attach the suction cup to the top right area of the screen.
- Pull to remove the screen from the rest of the device.

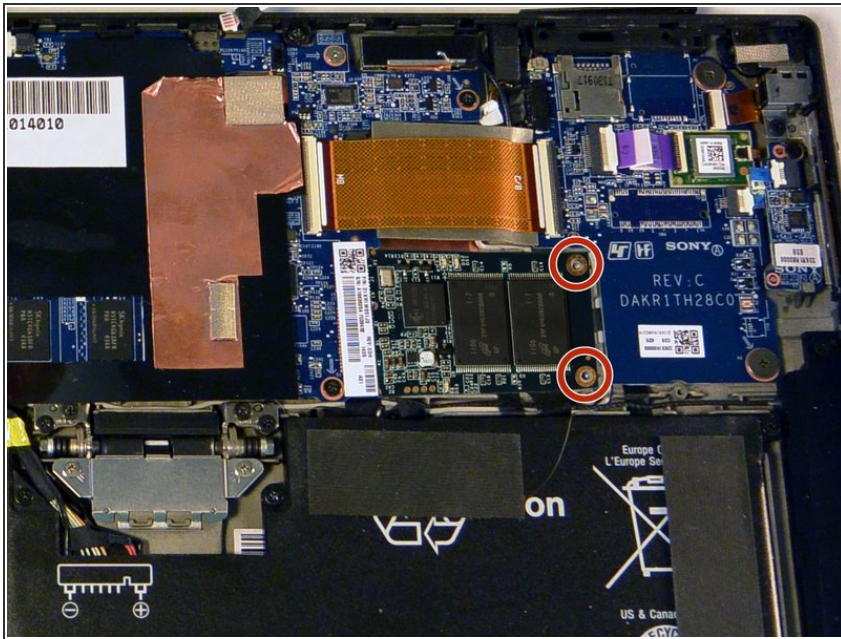
⚠ Watch out for the front camera cable connected to the top middle of the device. The display ribbon cable should just slide out.

Step 4 — Solid State Disk



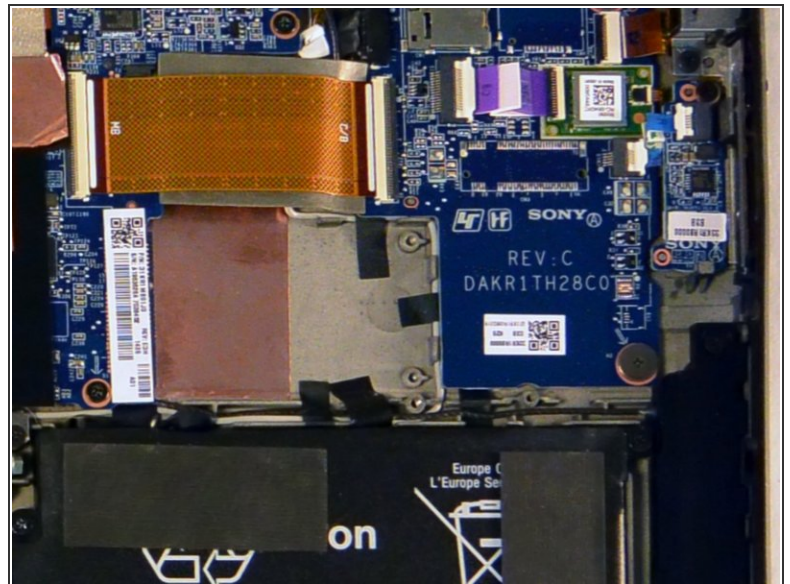
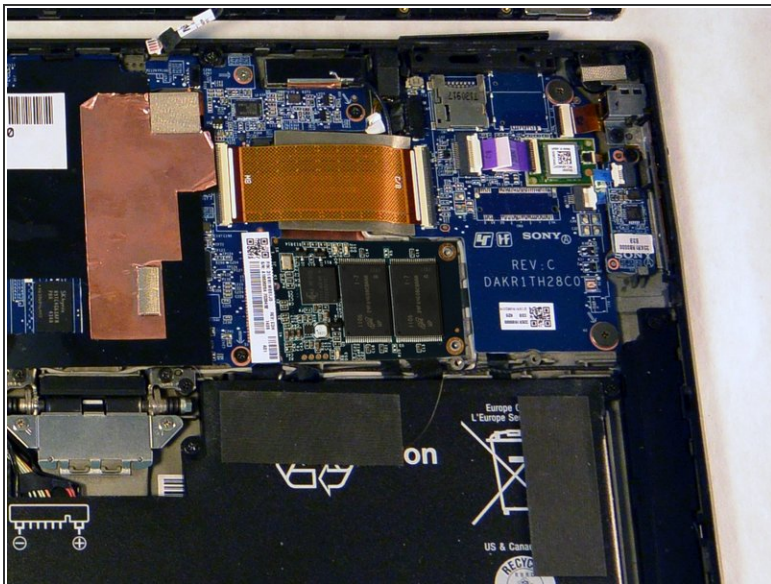
- ⚠ Unplug the battery connector located beside the fan.
- ℹ Locate the SSD on the right side of the device, above the battery and beneath the WiFi chip.

Step 5



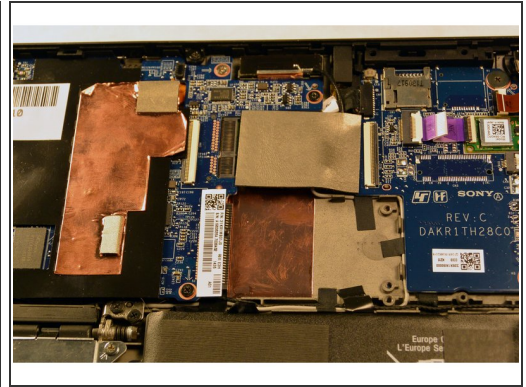
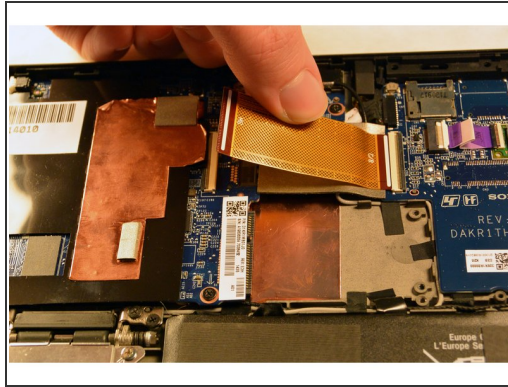
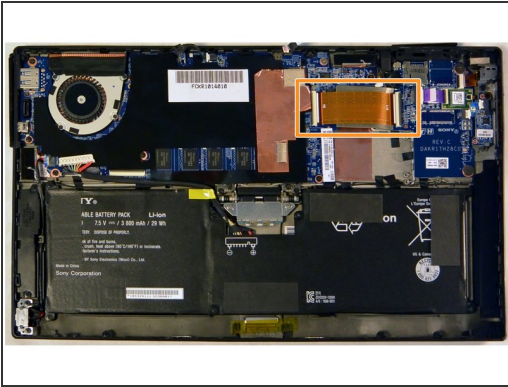
- Remove the two 3 mm Phillips #000 screws from the right edge of the SSD.

Step 6



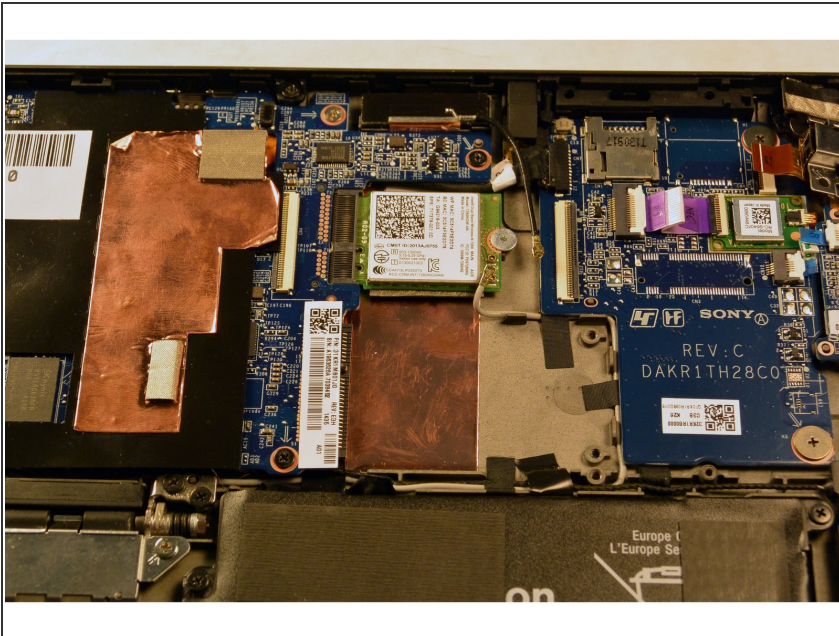
- Pull the SSD towards the right and slightly up, removing it from the back assembly.

Step 7 — Wifi Module



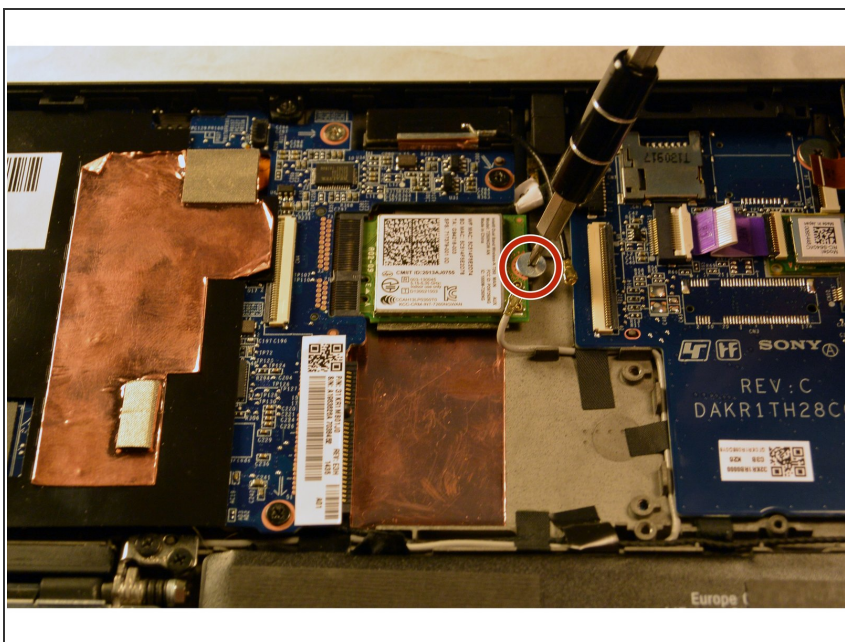
- Begin by removing the orange ribbon cable connecting the motherboard to the daughterboard, located above the SSD.
- Gently tug either side until it releases, then pull out the other end.

Step 8



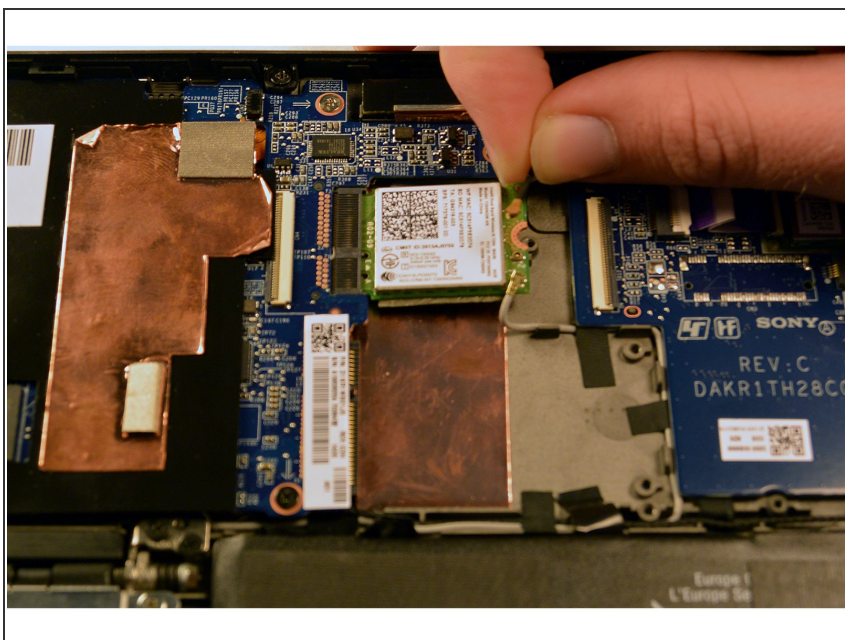
- Remove the grey foam separator that was underneath the orange ribbon cable.

Step 9



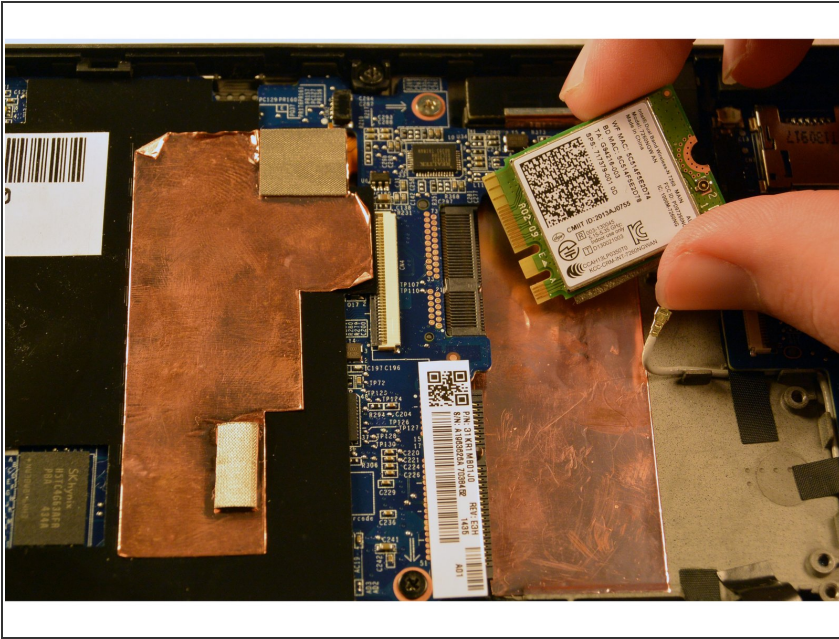
- Remove the silver 3 mm Phillips screw that holds the WiFi module in place.

Step 10



- Remove the black and grey antenna cables from the right side of the device.

Step 11



- Remove module by gently pulling towards the right.

To reassemble your device, follow these instructions in reverse order.