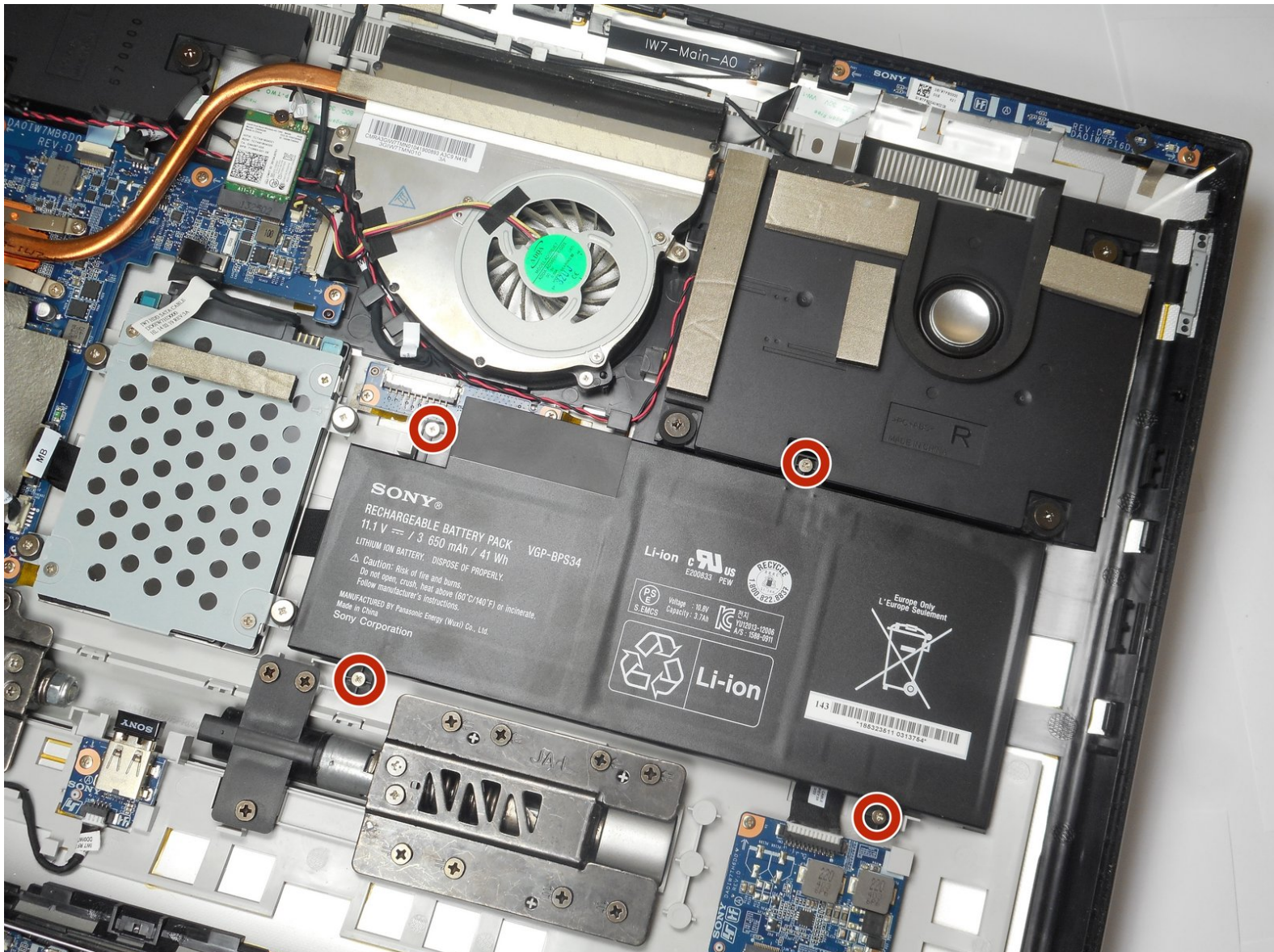




Sony Vaio Tap 21 SVT212A11L Battery Replacement

How to replace the battery in a Sony Vaio Tap 21 SVT212A11L.

Written By: Mauricio Retana



INTRODUCTION

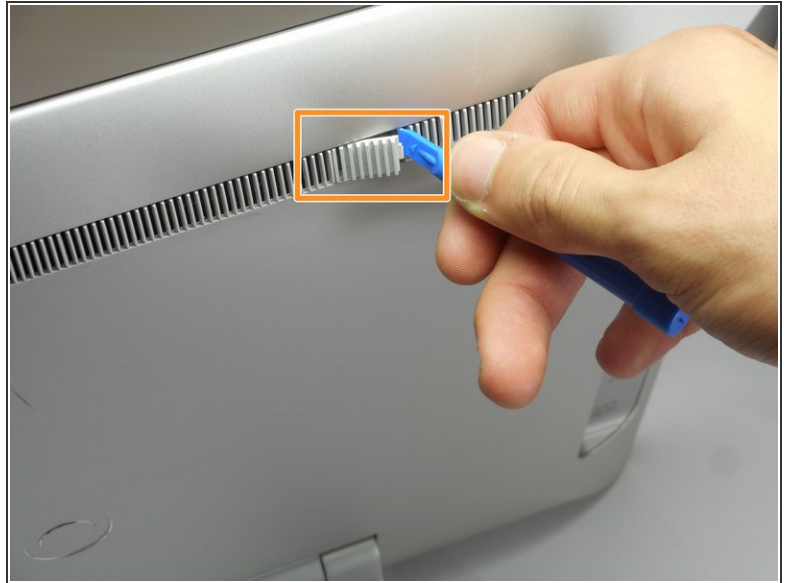
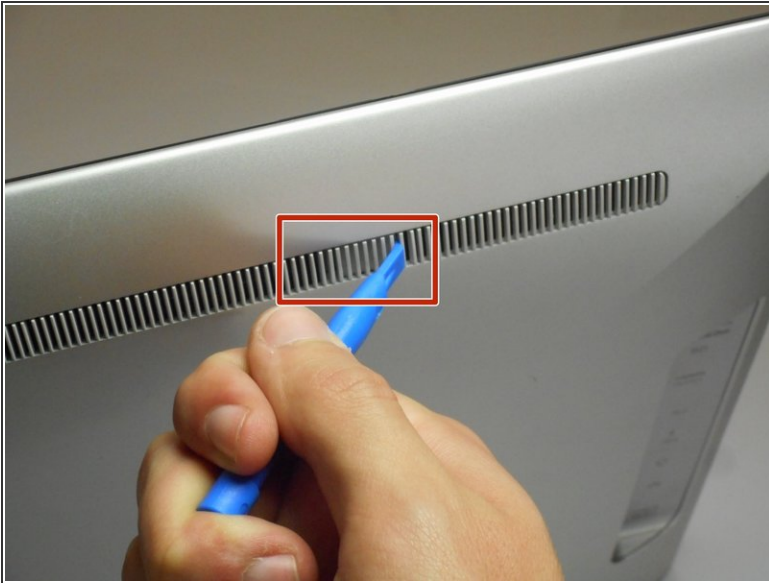
This battery replacement guide is a good fix to extend the life of your desktop. It is not a challenging task to repair this component. Replace the battery if the device is not charging properly, does not charge at all, or the battery drains quickly. Dispense the battery accordingly to environmental standards.




TOOLS:

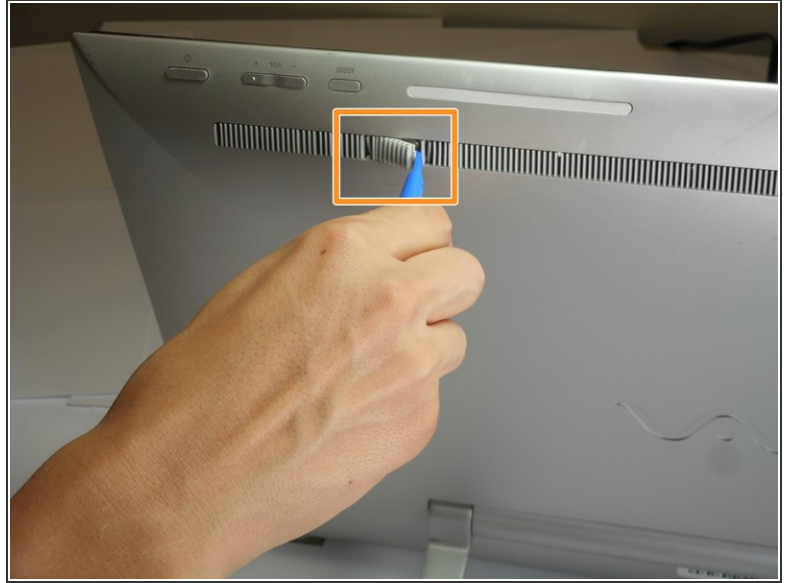
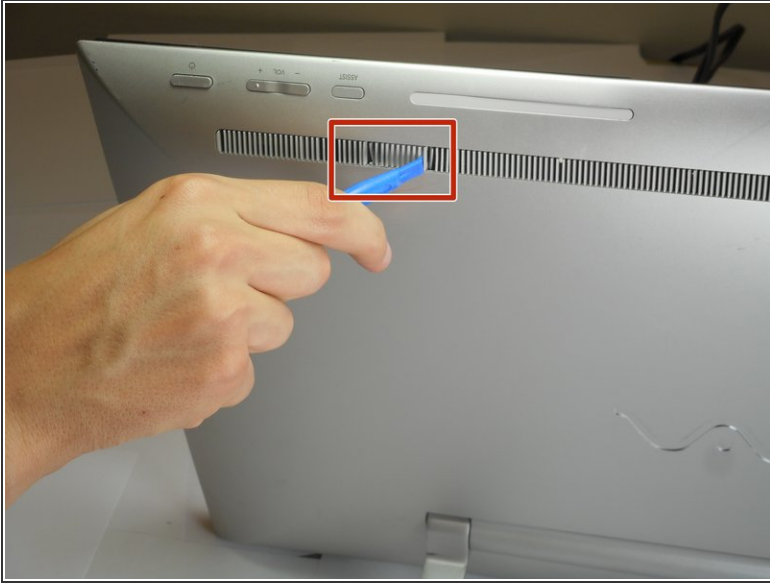
- [JIS #0 Screwdriver](#) (1)
 - [iFixit Opening Tools](#) (1)
-


Step 1 — Screen



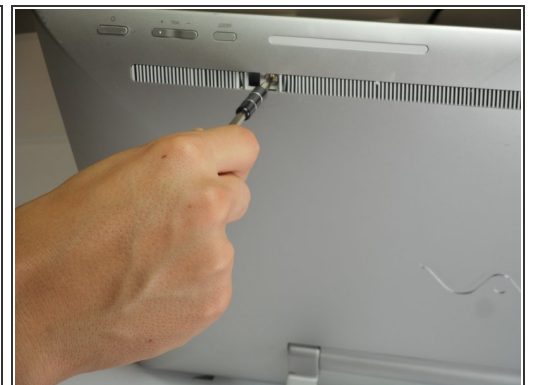
- Insert the plastic opening tool at an angle into the grill and lift the tab by applying force down and to the left as you are lifting it out of place.
 - Use your plastic opening tool to remove the right plastic tab blocking the screw mounts behind the device.
 - The plastic tab is located on a plastic stretch of grill running along the upper half of the back of the device.
-  You can find the tab looking for a solid fill within the grill. The tab is solid within the slits.

Step 2



- Insert the plastic opening tool at an angle into the grill and lift the tab by applying force down and to the left as you are lifting it out of place.
 - Use your plastic opening tool to remove the right plastic tab blocking the screw mounts behind the device.
 - The plastic tab is located on a plastic stretch of grill running along the upper half of the back of the device.
-  You can find the tab looking for a solid fill within the grill. The tab is solid within the slits.

Step 3



- Remove the two 5mm screws on the back of the device using a JIS 0 screwdriver.

This document was generated on 2019-10-30 07:34:34 PM (MST).

Step 4



- Face the screen of the device upwards.
 - Gently un-clip the screen around the four sides of the body with the plastic opening tool.
 - Use an up-down motion.
- i** It would be easier to do this if the device is fully rested flat by pushing the device down. It should rest on the stand.

Step 5



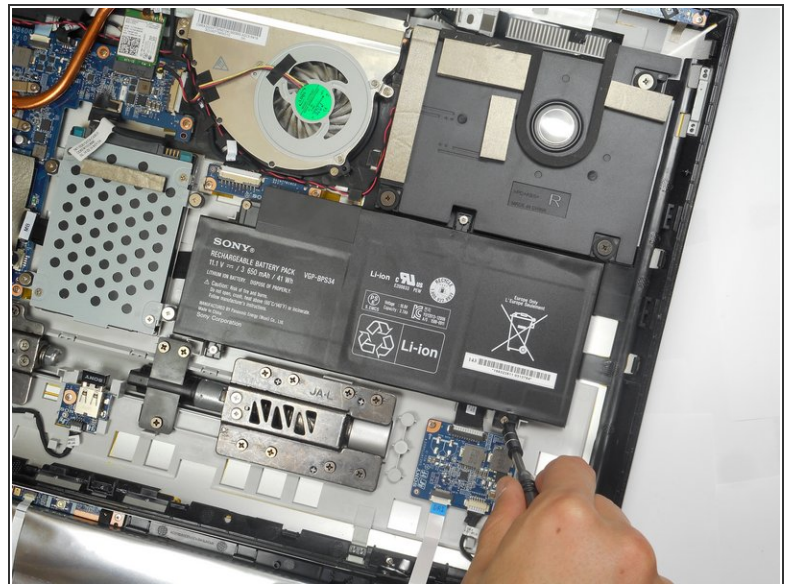
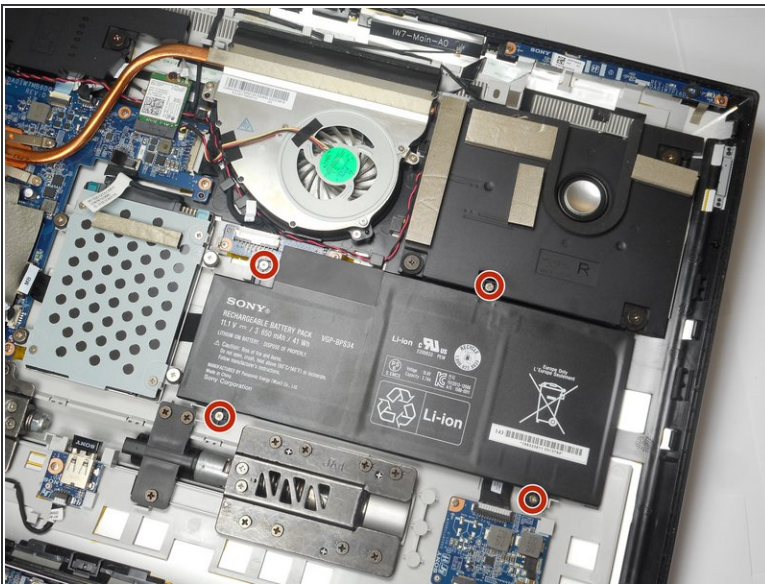
- Lift the screen gently from the top of the device.
- i** Make sure to lift the screen from the same side the screws were removed.

Step 6



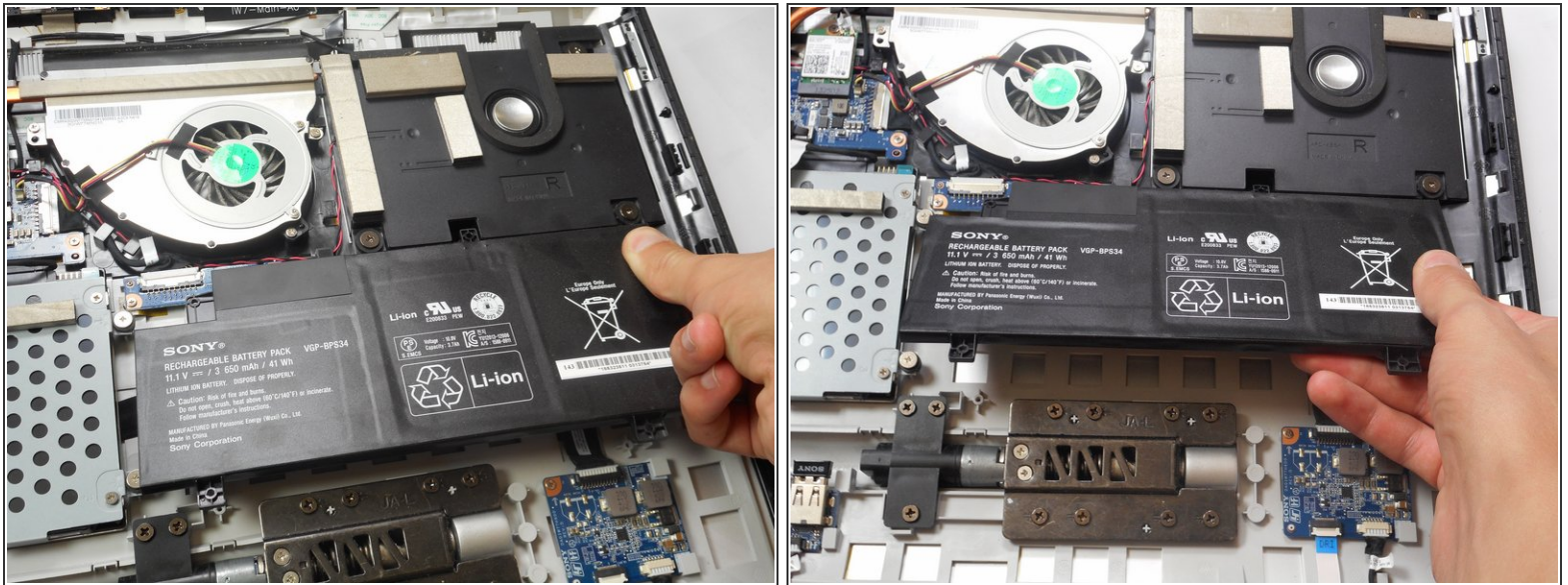
- Slowly and gently lay the screen on its face.
- ⓘ It's important that the cables are not damaged while doing this process. Ensure as you lay the screen on its face any cables are carefully moved insuring no stress is applied on the cables.

Step 7 — Battery



- Remove a total of four 10mm screws around the battery using a JIS 0 screwdriver.

Step 8



- Gently remove the battery by lifting from the bottom up.

To reassemble your device, follow these instructions in reverse order.