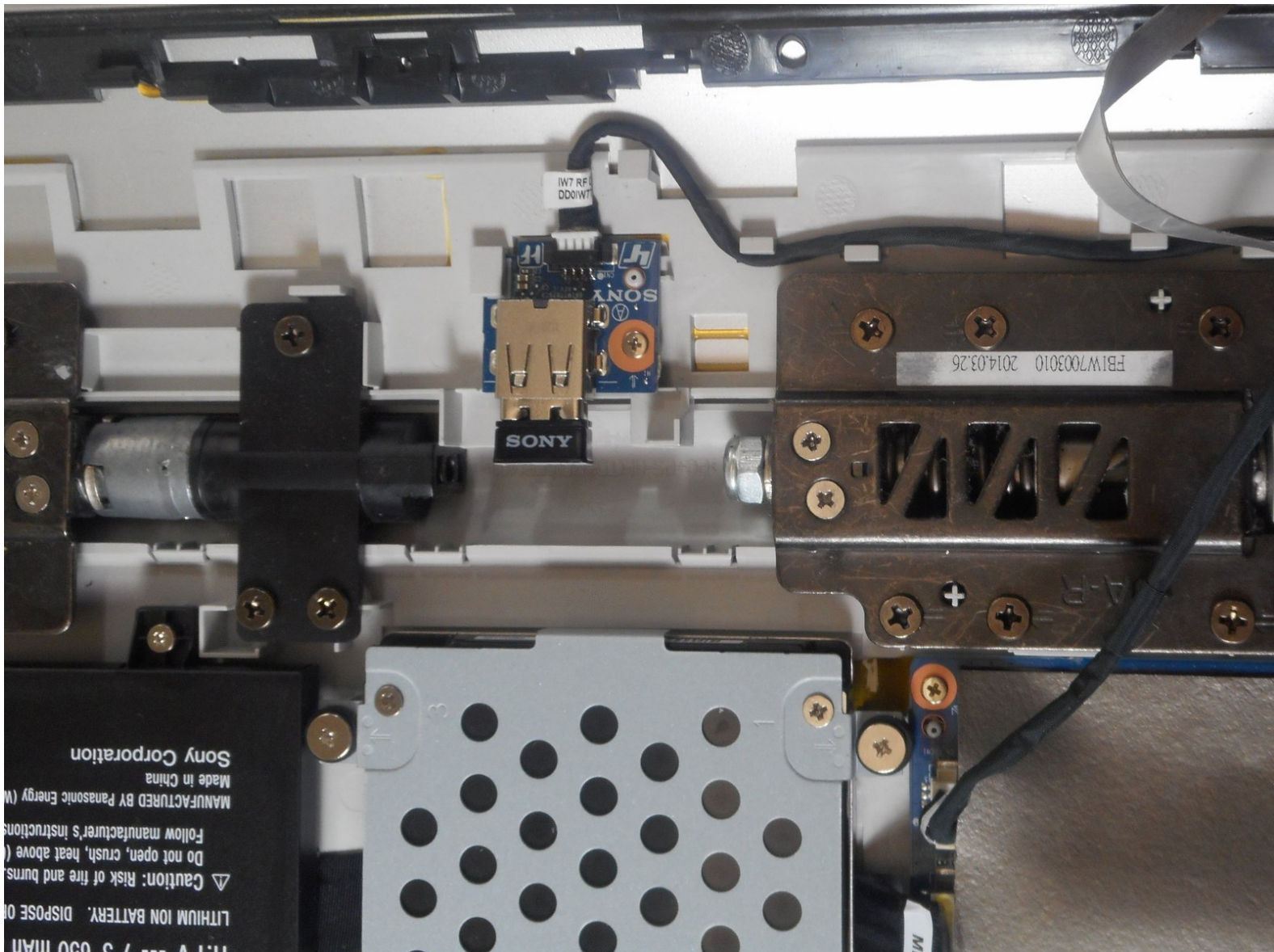




Sony Vaio Tap 21 SVT212A11L Bluetooth Receiver Replacement

How to replace the Bluetooth receiver in a Sony Vaio Tap 21 SVT212A11L.

Written By: Mauricio Retana



INTRODUCTION

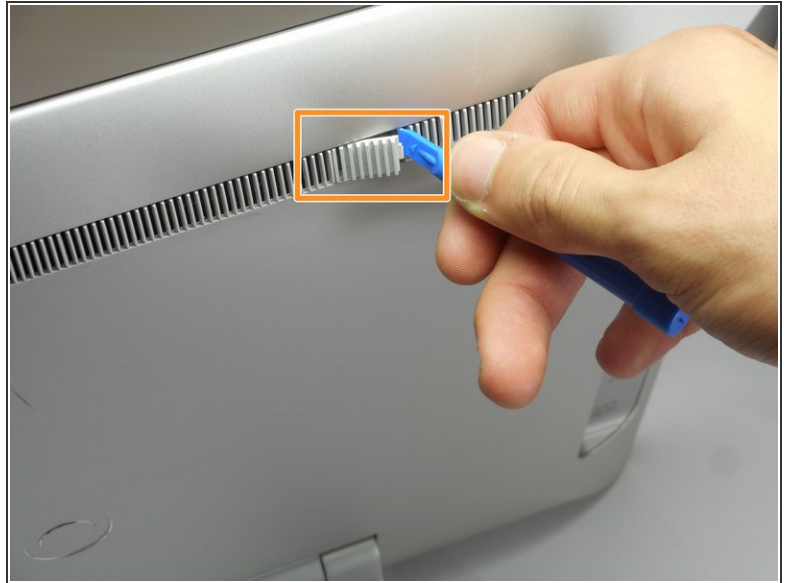
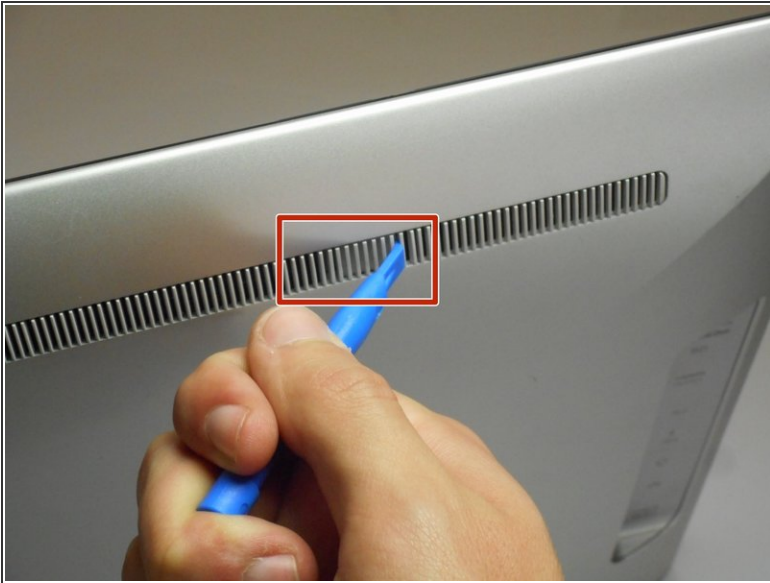
Use this guide to replace the Bluetooth receiver on a Sony Vaio Tap 21 all -in-one desktop. This replacement is an easy repair that will fix your device's Bluetooth capabilities. You will notice the Bluetooth receiver needs replacing when the Bluetooth connection is not working or you receive a message on your screen indicating the Bluetooth capabilities are not working.




TOOLS:

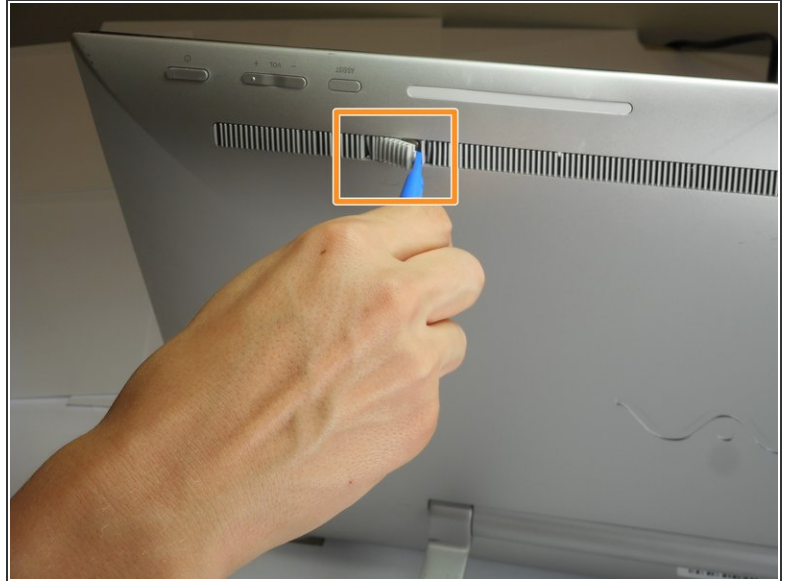
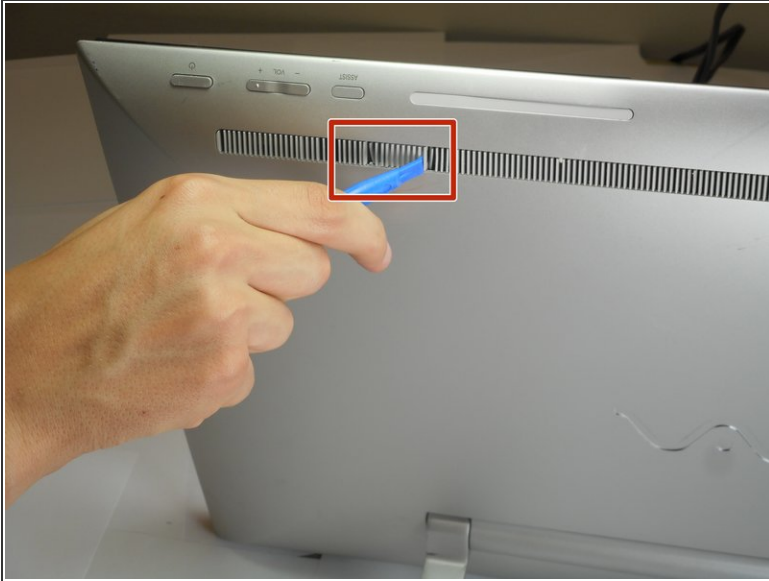
- [iFixit Opening Tools](#) (1)
 - [JIS #0 Screwdriver](#) (1)
-


Step 1 — Screen



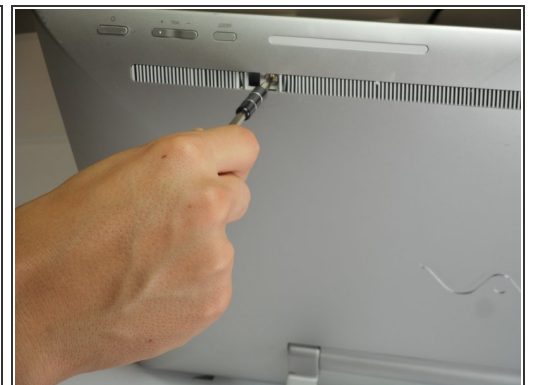
- Insert the plastic opening tool at an angle into the grill and lift the tab by applying force down and to the left as you are lifting it out of place.
 - Use your plastic opening tool to remove the right plastic tab blocking the screw mounts behind the device.
 - The plastic tab is located on a plastic stretch of grill running along the upper half of the back of the device.
-  You can find the tab looking for a solid fill within the grill. The tab is solid within the slits.

Step 2



- Insert the plastic opening tool at an angle into the grill and lift the tab by applying force down and to the left as you are lifting it out of place.
 - Use your plastic opening tool to remove the right plastic tab blocking the screw mounts behind the device.
 - The plastic tab is located on a plastic stretch of grill running along the upper half of the back of the device.
-  You can find the tab looking for a solid fill within the grill. The tab is solid within the slits.

Step 3



- Remove the two 5mm screws on the back of the device using a JIS 0 screwdriver.

Step 4



- Face the screen of the device upwards.
 - Gently un-clip the screen around the four sides of the body with the plastic opening tool.
 - Use an up-down motion.
- i** It would be easier to do this if the device is fully rested flat by pushing the device down. It should rest on the stand.

Step 5



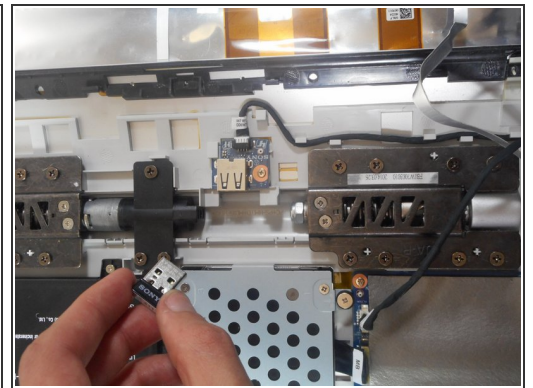
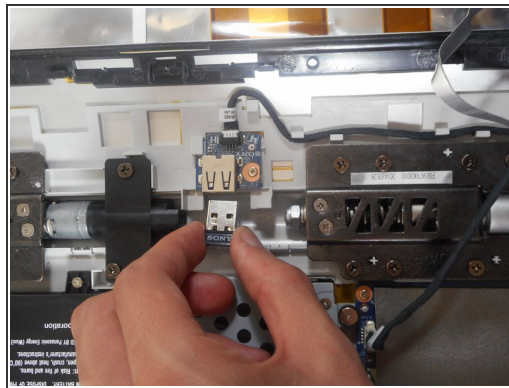
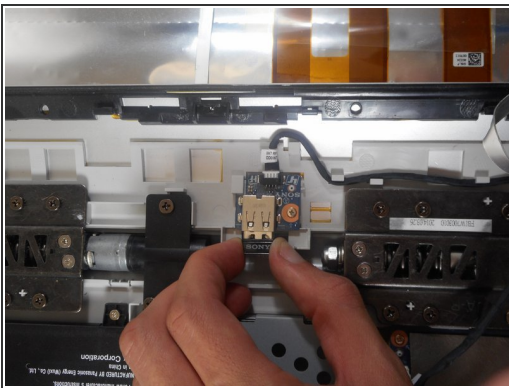
- Lift the screen gently from the top of the device.
- i** Make sure to lift the screen from the same side the screws were removed.

Step 6



- Slowly and gently lay the screen on its face.
- ⓘ It's important that the cables are not damaged while doing this process. Ensure as you lay the screen on its face any cables are carefully moved insuring no stress is applied on the cables.

Step 7 — Bluetooth Receiver



- Slowly remove the Bluetooth receiver from its connector.

To reassemble your device, follow these instructions in reverse order.