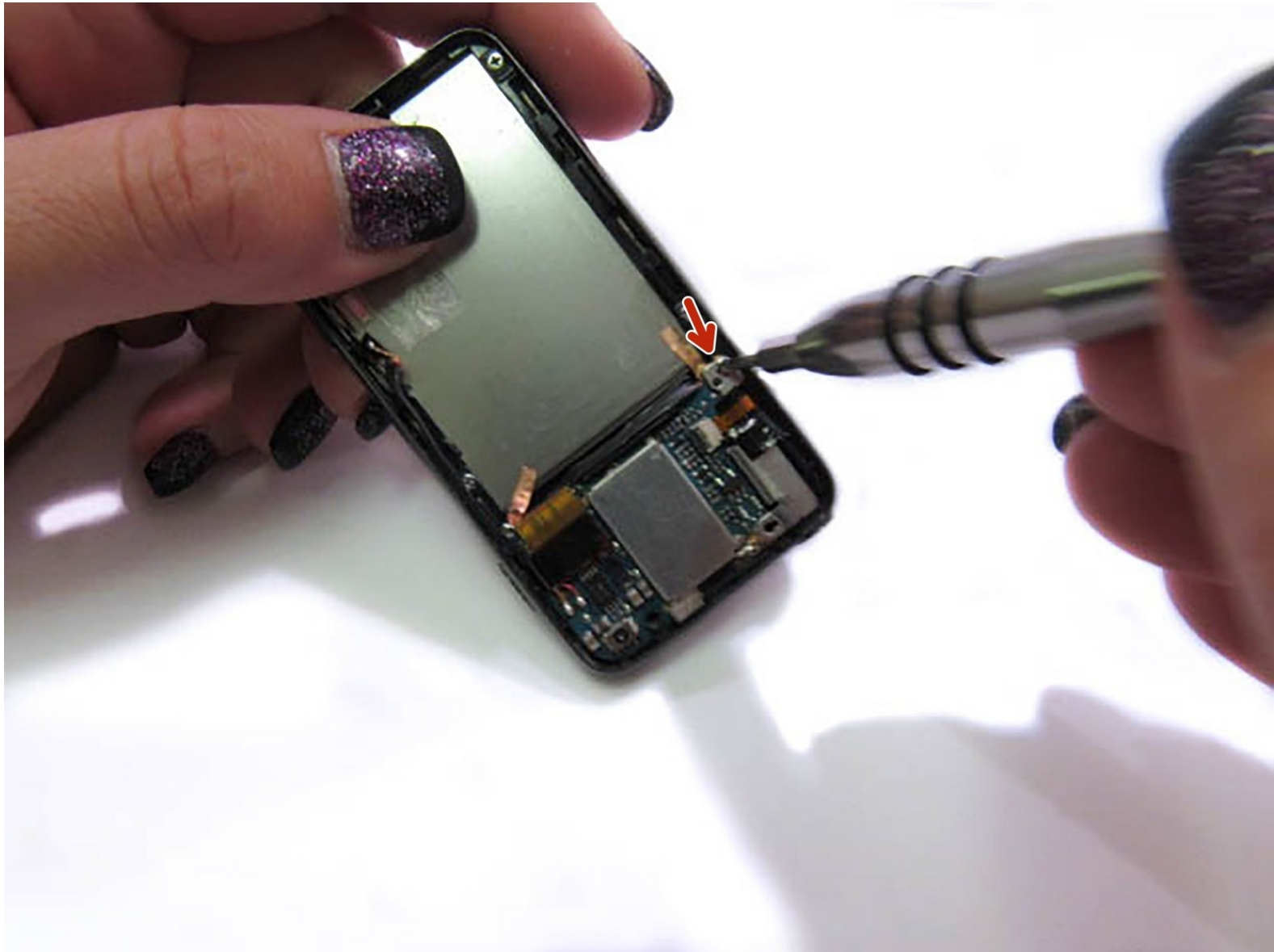




Sony Walkman NWZ-E438 Headphone Jack Replacement

Follow this guide to replace the headphone jack.

Written By: Cheryl Zinn





TOOLS:

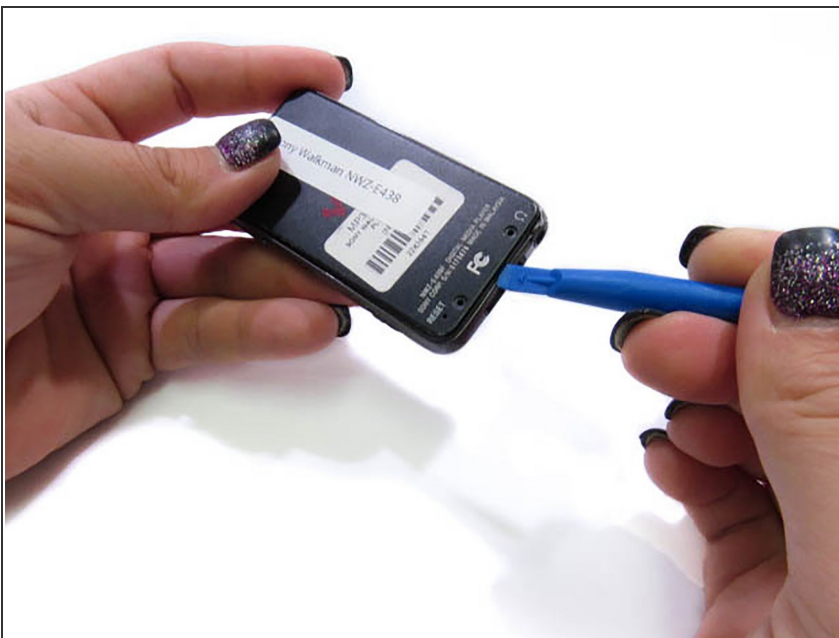
- [Phillips #000 Screwdriver](#) (1)
- [Tweezers](#) (1)
- [iFixit Opening Tools](#) (1)

Step 1 — Disassembling Sony Walkman NWZ-E438



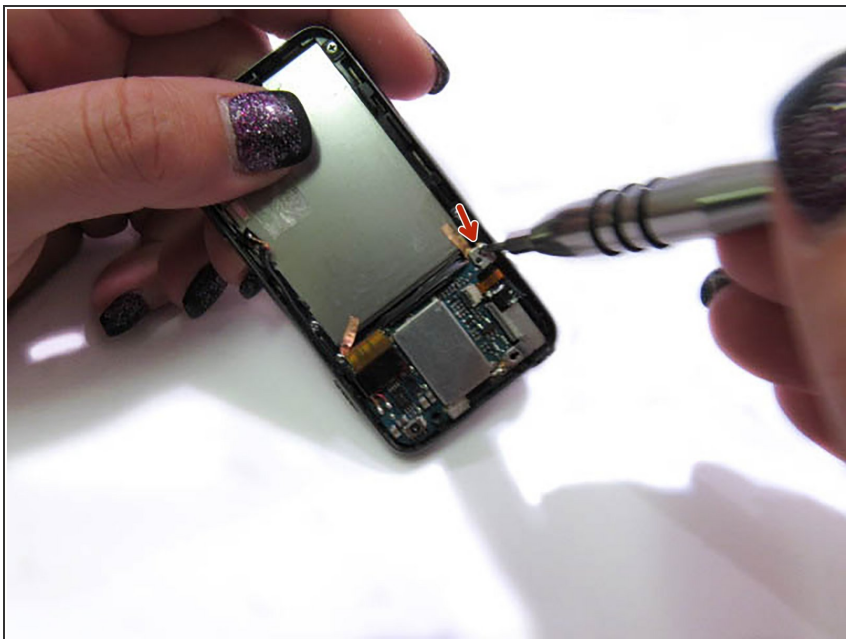
- Unscrew the two screws on the back of the device using a Phillips PH000 screwdriver.
- ① Keep the Phillips PH000 screwdriver aside for further steps in the guide. It will be the only screwdriver needed for this replacement.

Step 2



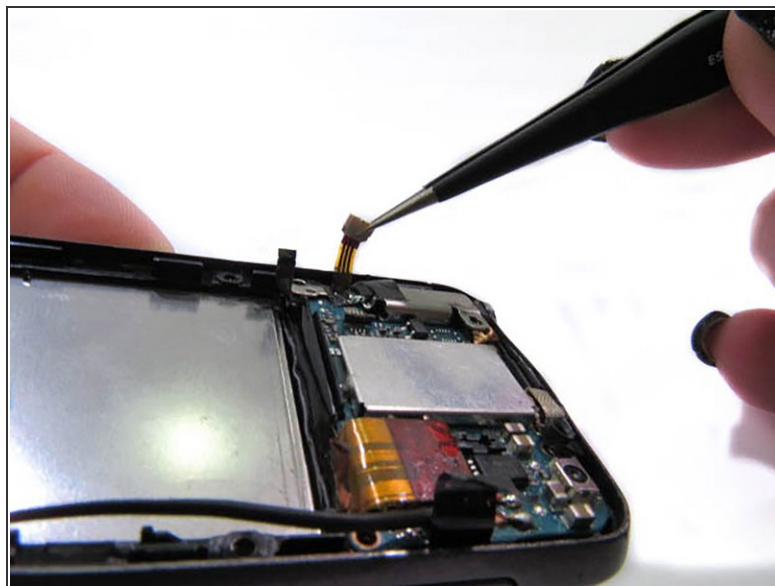
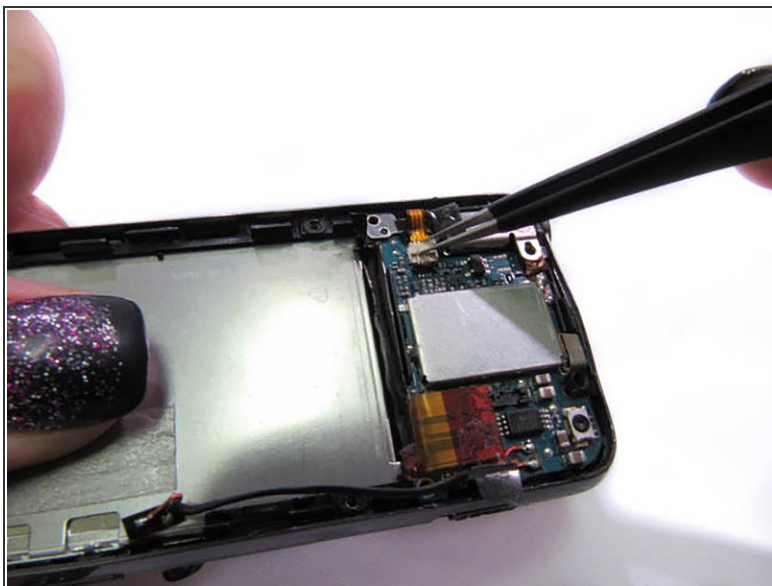
- Use a small prying tool to carefully pry open the back of the device.

Step 3 — Headphone Jack



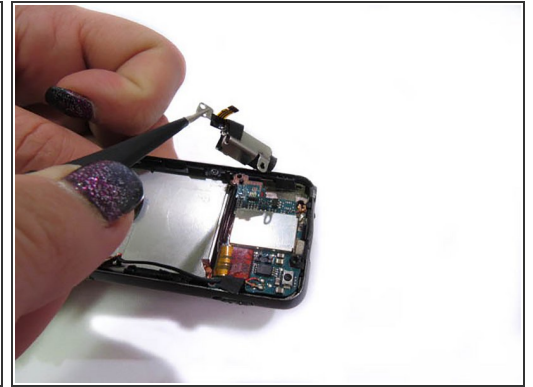
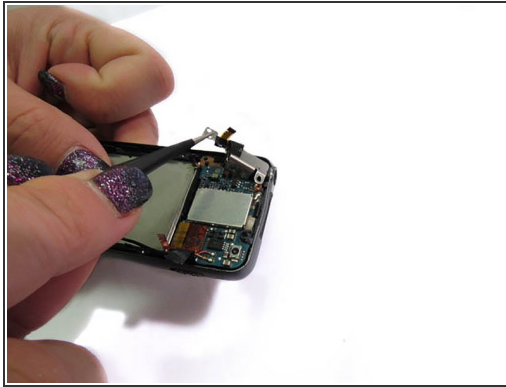
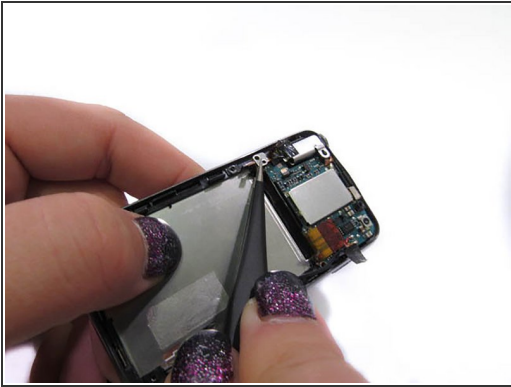
- Unscrew the 1 screws around the headphone jack using Phillips PH000 screwdriver.

Step 4



- Using the fine pointed tweezers, unplug the cords connecting the headphone jack to the chip.

Step 5



- Remove the headphone jack.

To reassemble your device, follow these instructions in reverse order.