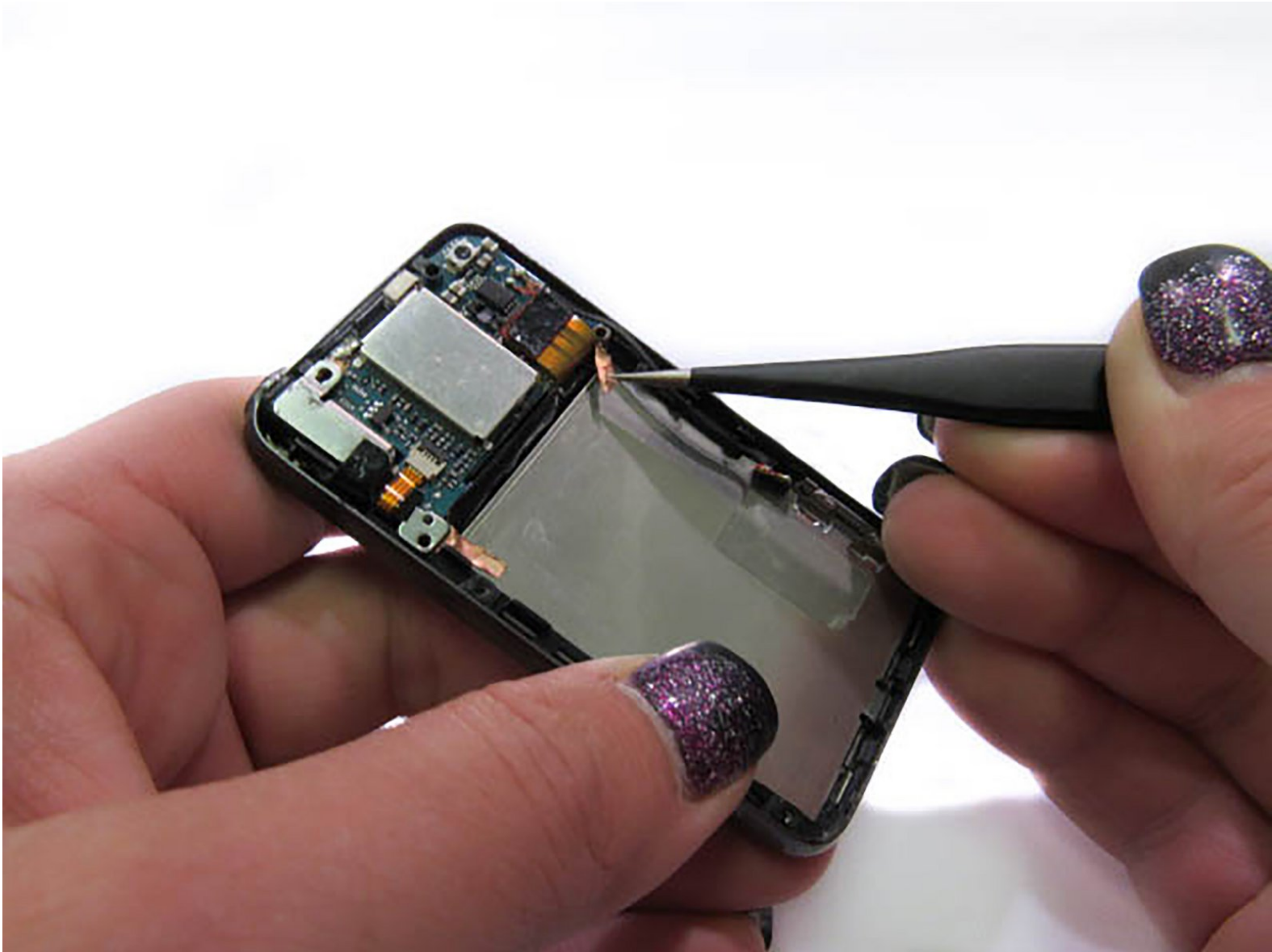




# Sony Walkman NWZ-E438 Screen Replacement

This guide walks you through how to replace a broken screen.

Written By: Cheryl Zinn



---

## INTRODUCTION

Follow this guide to replace a cracked or broken screen on you Sony Walkman NWZ-E438.

---



### TOOLS:

- [Tweezers](#) (1)
  - [Phillips #000 Screwdriver](#) (1)
  - [iFixit Opening Tools](#) (1)
-

## Step 1 — Disassembling Sony Walkman NWZ-E438



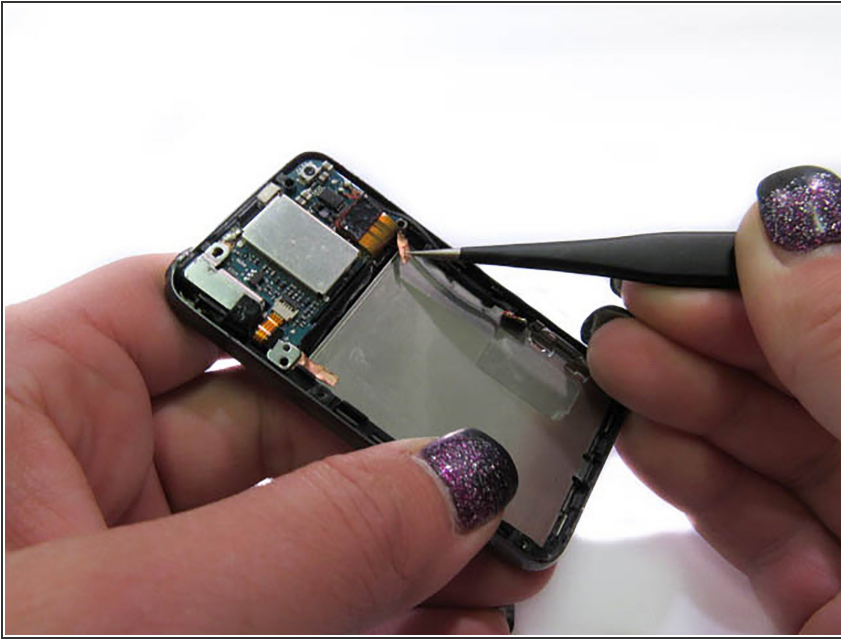
- Unscrew the two screws on the back of the device using a Phillips PH000 screwdriver.
- ⓘ Keep the Phillips PH000 screwdriver aside for further steps in the guide. It will be the only screwdriver needed for this replacement.

## Step 2



- Use a small prying tool to carefully pry open the back of the device.

## Step 3 — Screen



- Pull up the 2 copper strips connecting the outside of the device to the inside of the device.

## Step 4



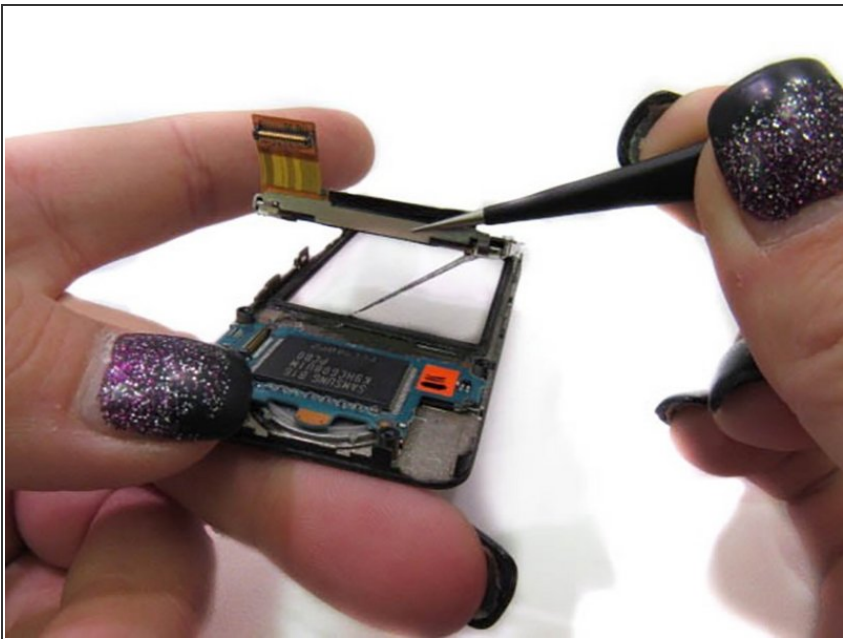
- Using the small, plastic prying tool wedge it between the bottom of the frame and the outer frame.
- Slowly circle the device, popping the outside of the frame off.

## Step 5



- To remove the screen, use the fine point tweezers and lift up on the metal piece at the bottom of the frame.

## Step 6



- To remove screen from metal backing, use fine point tweezers to go in between the screen and metal backing and slowly pull them apart.



## Step 7



- The screen will be removed.

To reassemble your device, follow these instructions in reverse order.