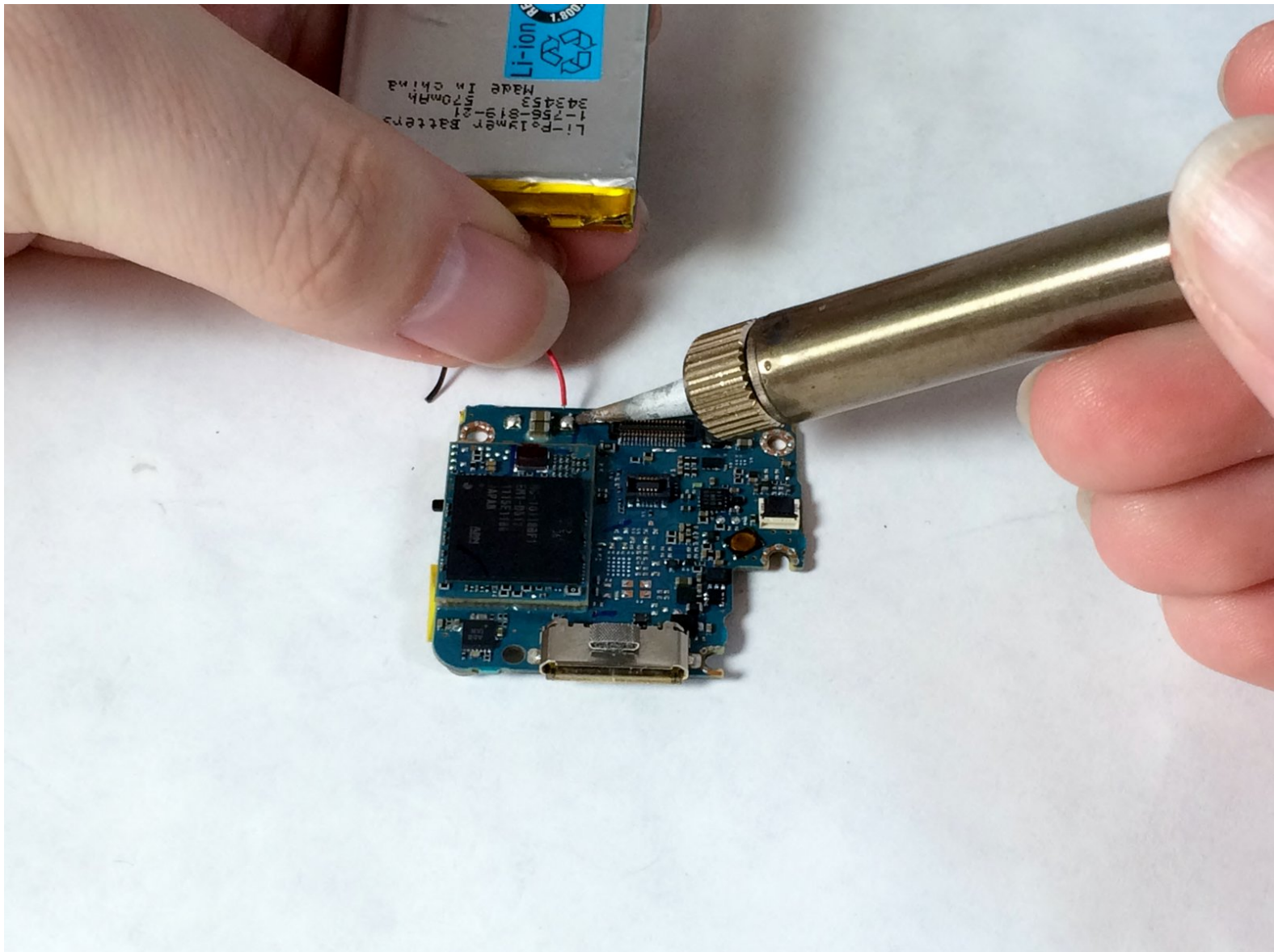




# Sony Walkman NWZ-S764 Battery Replacement

This guide will walk you through replacing the battery in the Walkman.

Written By: John Ferguson





## TOOLS:

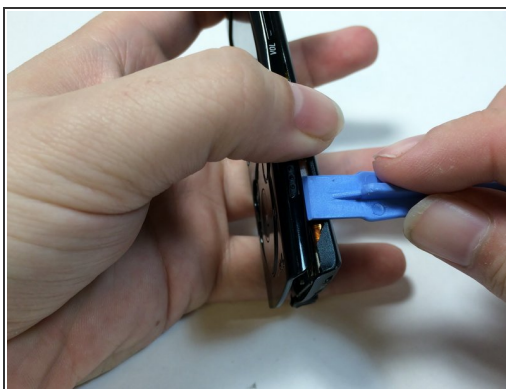
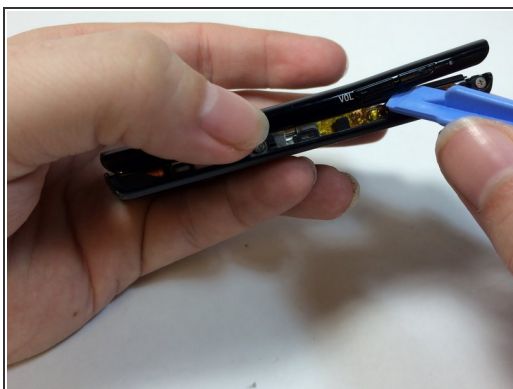
- [Phillips #00 Screwdriver](#) (1)
  - [iFixit Opening Tools](#) (1)
  - [Spudger](#) (1)
  - [Soldering Iron](#) (1)
-

## Step 1 — Removing the back cover



- Remove the two black 6.4mm Phillips screws from the back of the device.

## Step 2



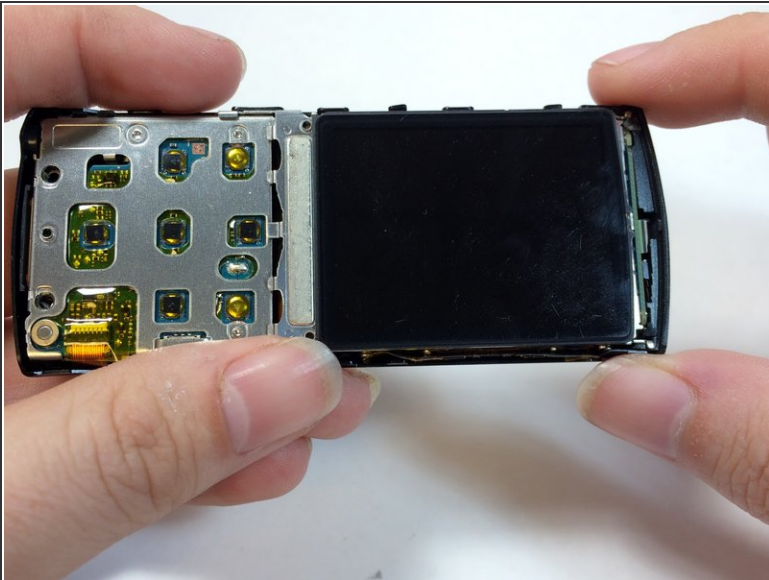
- Using a plastic opening tool, work your way around the edges of the device, carefully prying off the front panel.

### Step 3



- Remove the two 2.8 mm Phillips screws located on either side of the device near the top.

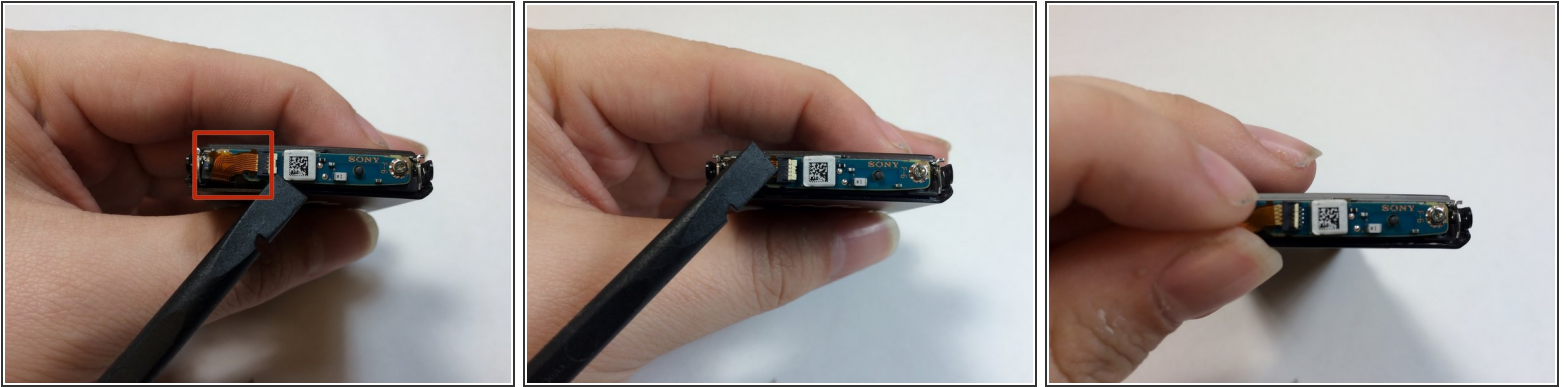
### Step 4



- Carefully pull the top piece away from the device.



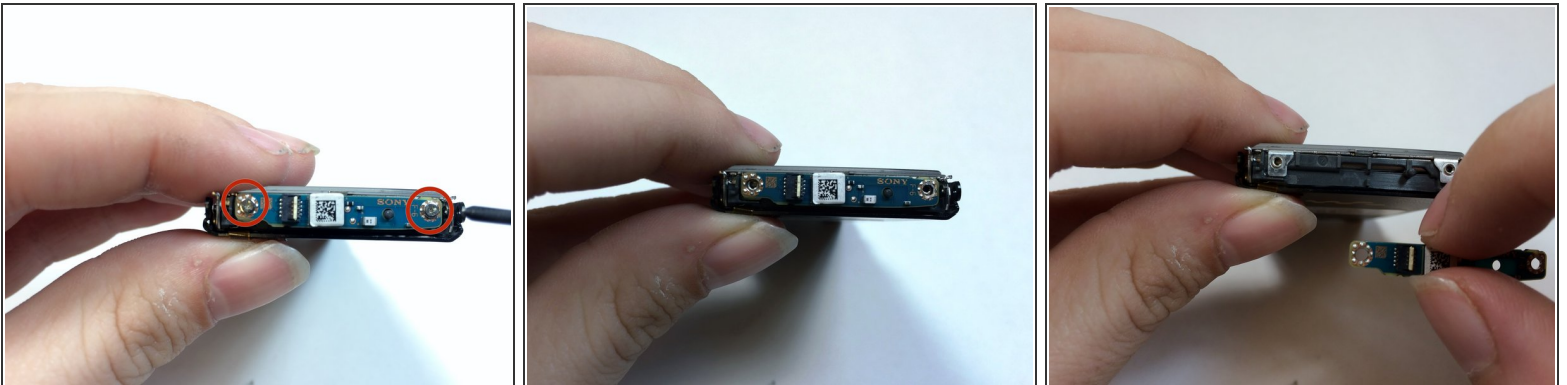
## Step 5 — Removing the Bluetooth module



- Use the flat end of the spudger to flip up the retaining flap for the bluetooth module.

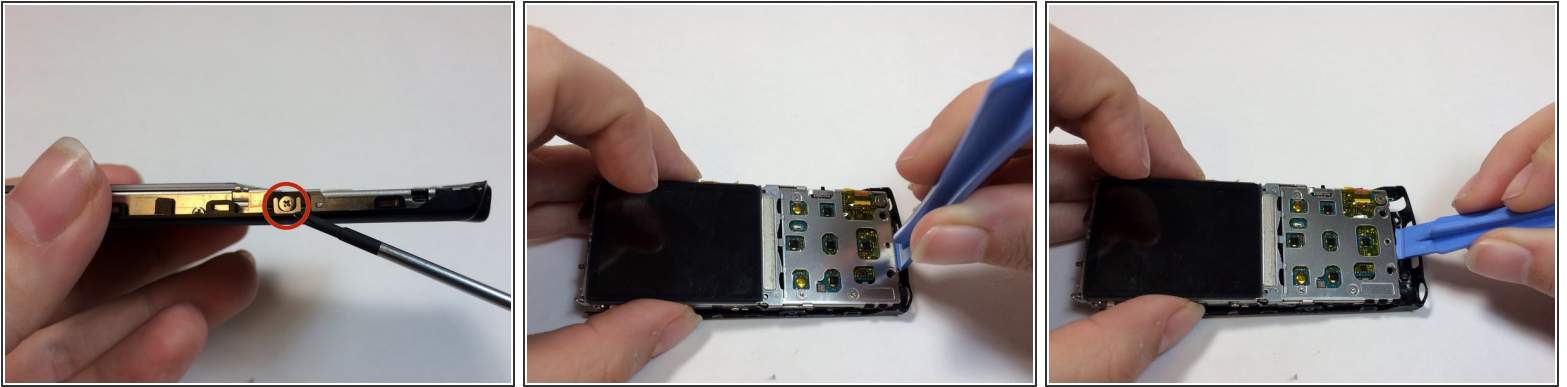
⚠ Be sure to lift up on the retaining flap, and not the socket itself.

## Step 6



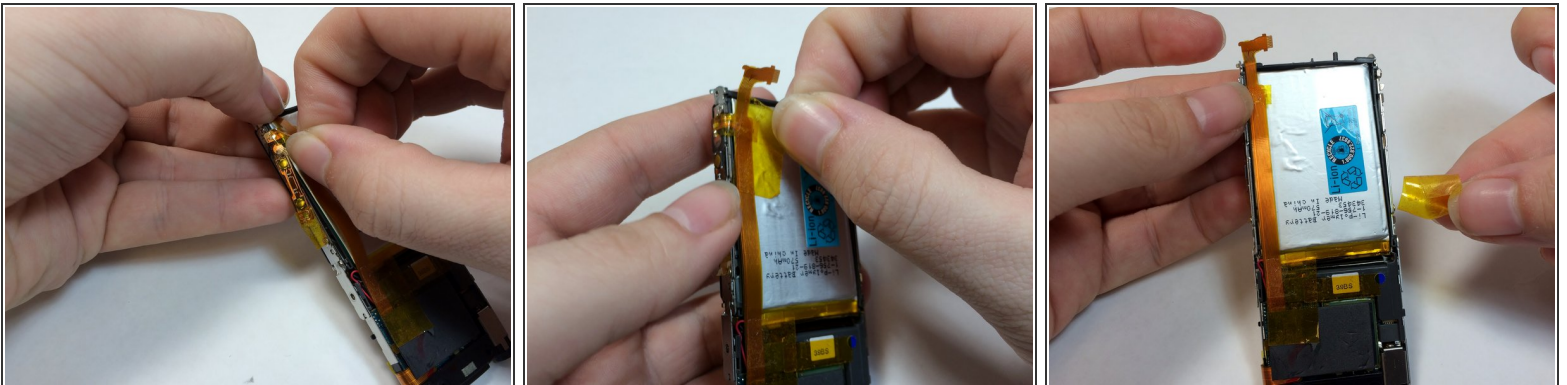
- Remove the two 1.8mm silver Phillips screws on the Bluetooth module.
  - Lift up on and remove the Bluetooth module.
- i** The ribbon cable must first be removed in order to access the highlighted screw.

## Step 7 — Audio Port



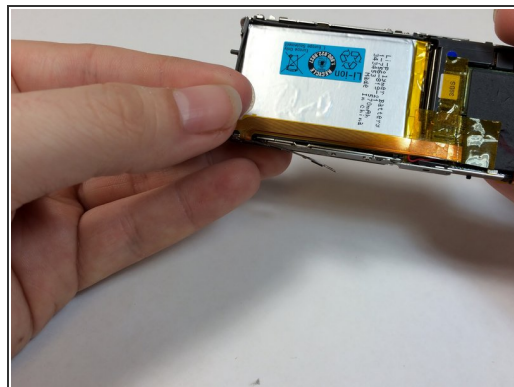
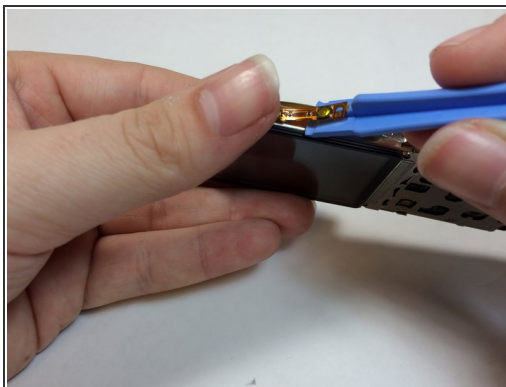
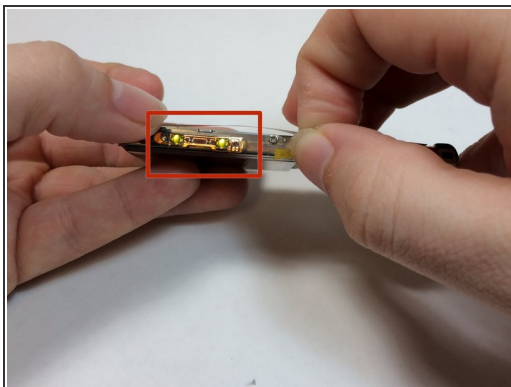
- Remove the two 2.8mm silver Phillips screws on the sides of the frame.
- ⓘ The two 2.8mm screws are on each side of the device.
- Insert a plastic prying tool between the bottom of the case and the motherboard.
- Pry up the assembly and lift it away from the case.

## Step 8



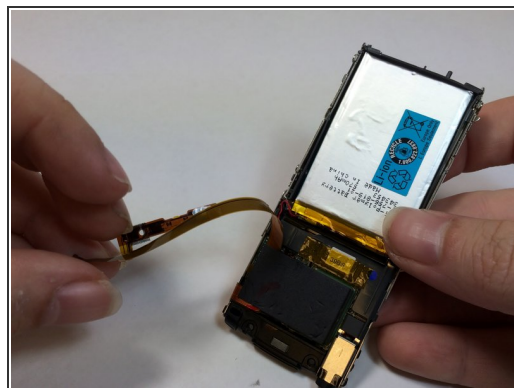
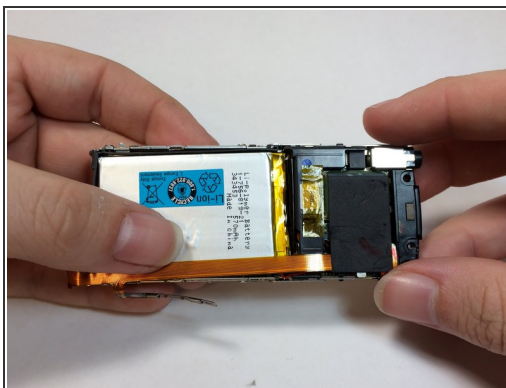
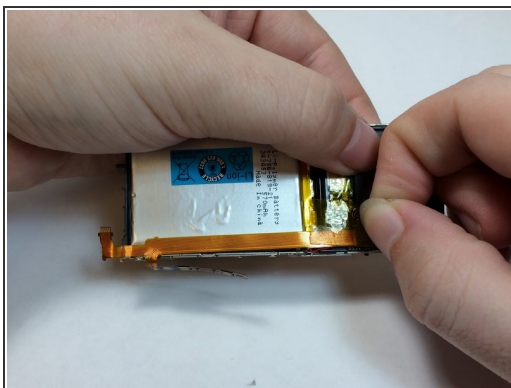
- Remove the yellow tape from the battery and volume control module.
- ⓘ Save tape for reassembly.

## Step 9



- Use a prying tool to pry under the volume control module.
- ⚠ This module is glued on, using too much force may damage or warp the module.

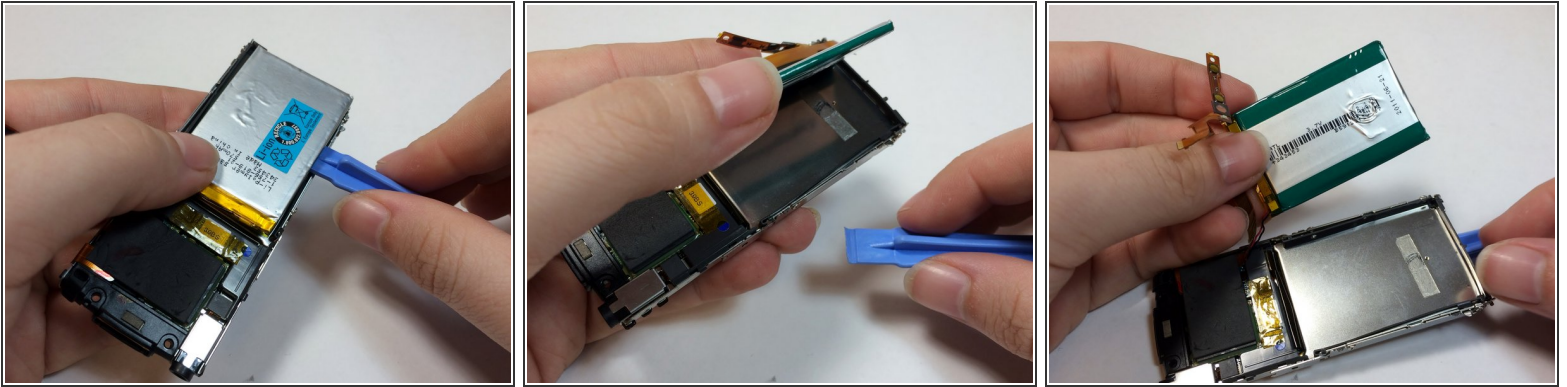
## Step 10



- Remove the tape from EMF shield and the LCD housing.
- Lift up on the volume control ribbon.



## Step 11

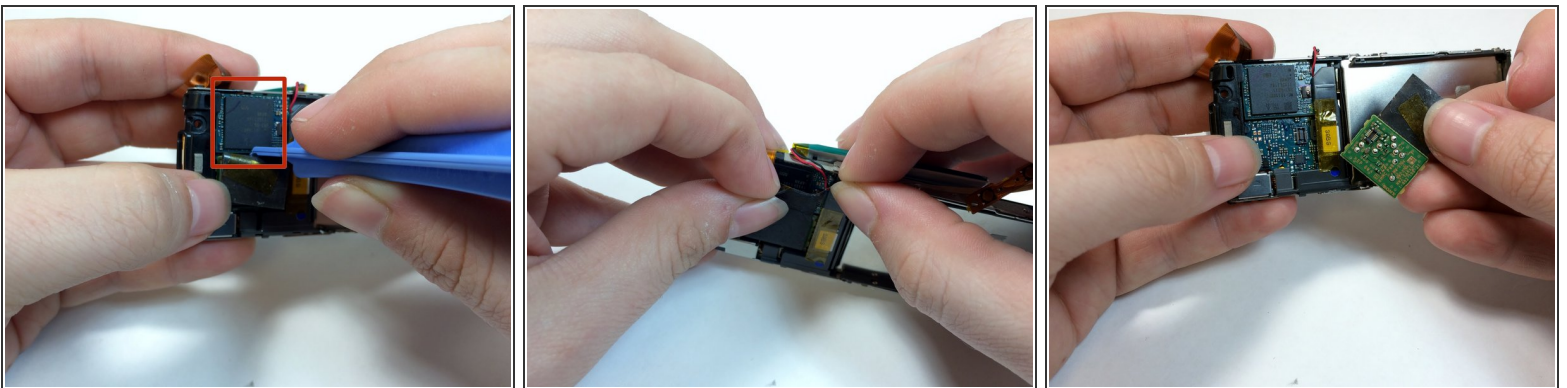


- Insert a plastic opening tool under the battery and lift up to remove it.

⚠ The battery is glued on, too much force may damage the battery casing.

⚠ The battery is soldered to the motherboard, care should be taken to not place too much stress on the wires.

## Step 12



- Remove the black shielding tape from above the Hard Drive.

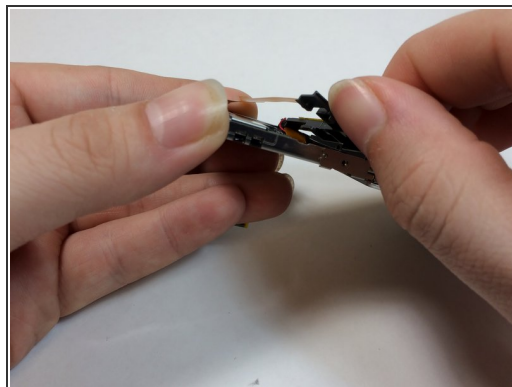
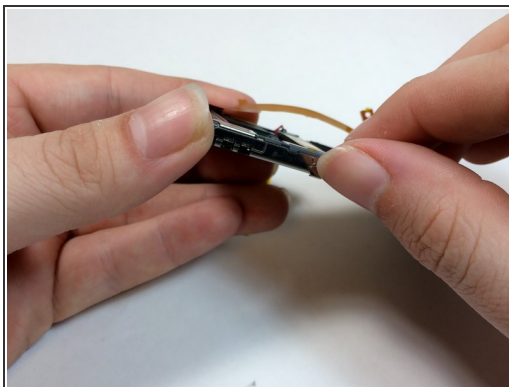
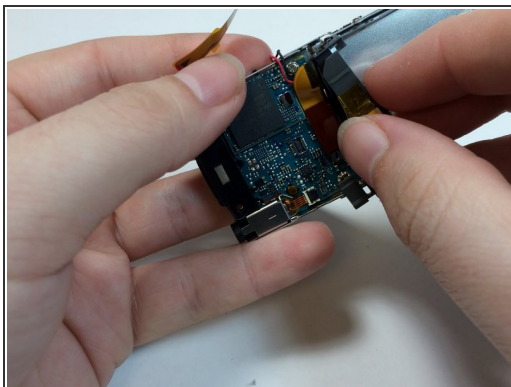
- Peel the foam cover away from the hard drive.

- Use a plastic opening tool to remove the EMF chip from the motherboard.

⚠ The hard drive is soldered onto the device. Be careful not to pull too hard on the hard drive.

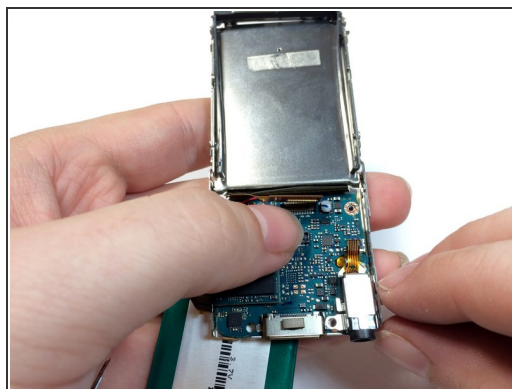
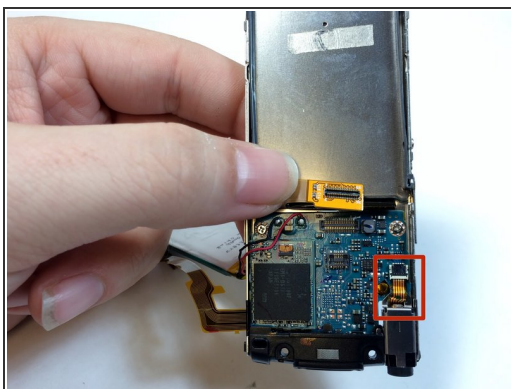


## Step 13



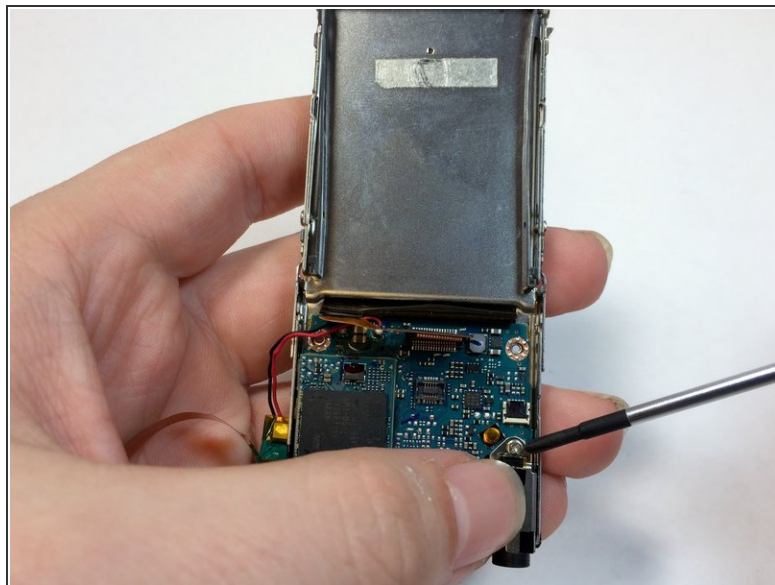
- Remove the plastic bracket by pushing up with your thumb to expose the display connection.

## Step 14



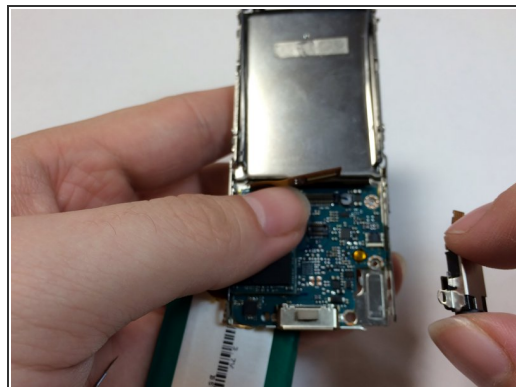
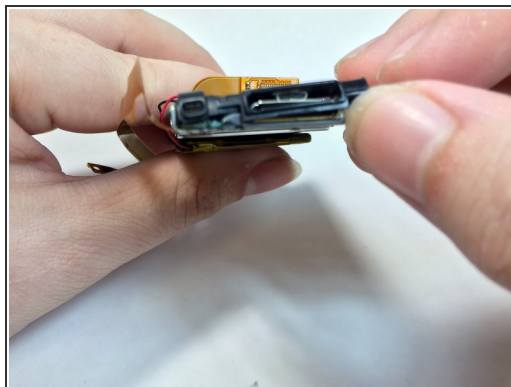
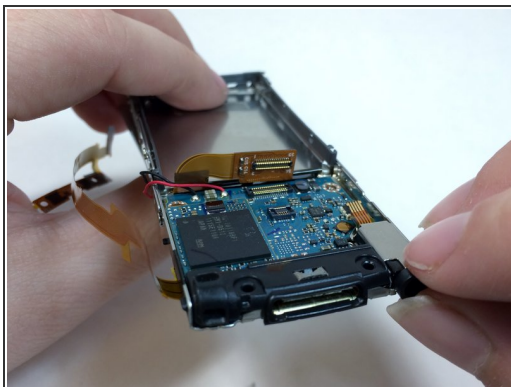
- Use the flat end of a spudger to flip up the retaining flap on the audio jack module.

## Step 15



- Peel back the ribbon for the audio jack and remove the 1.8mm silver Phillips screw.

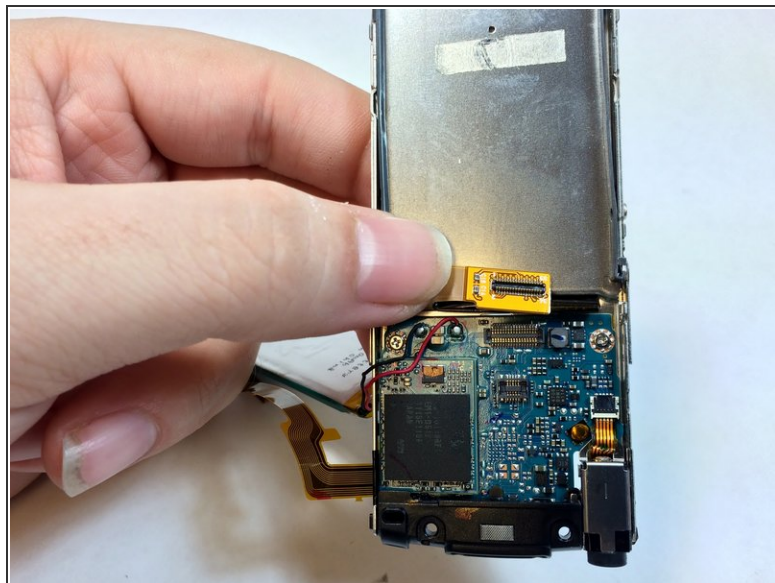
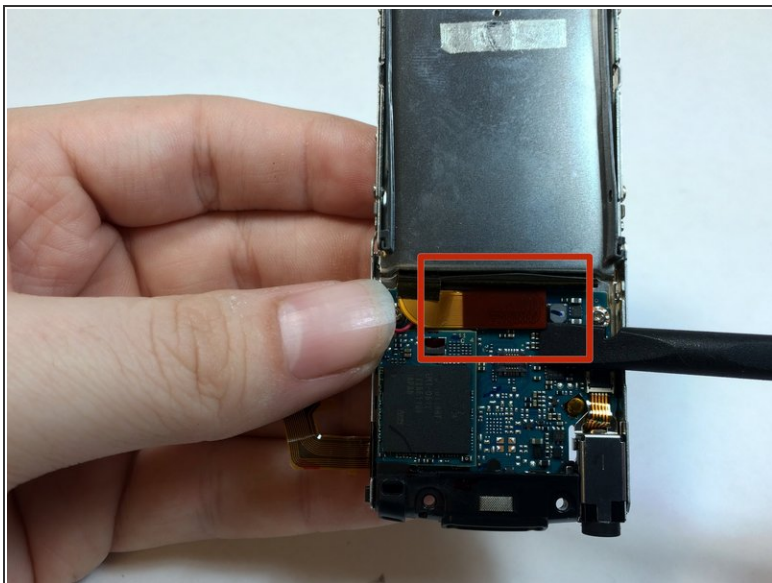
## Step 16



- Remove the mic casing by pushing up and in.
- Remove the headphone jack and the bottom casing.

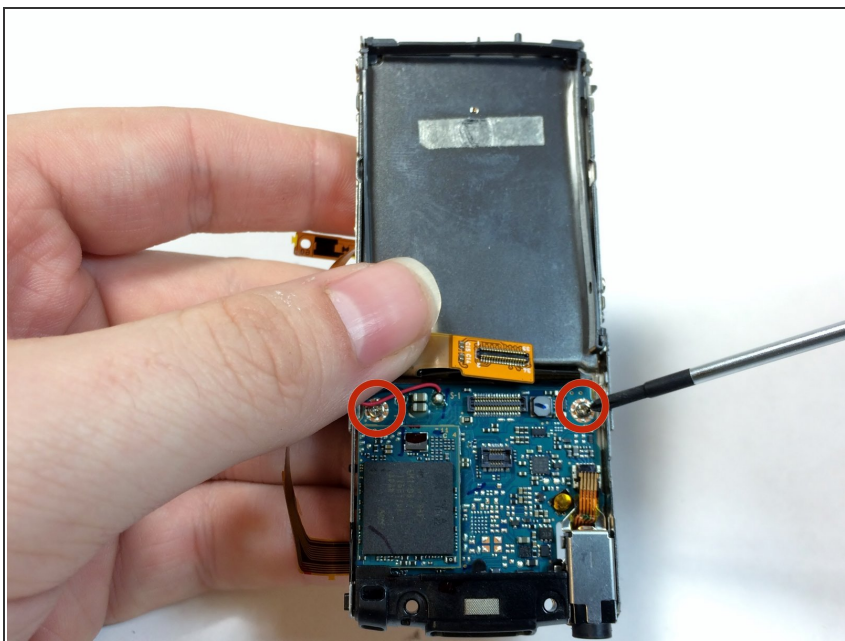


## Step 17 — Motherboard



- Use the prying tool to remove the LCD ribbon wire.

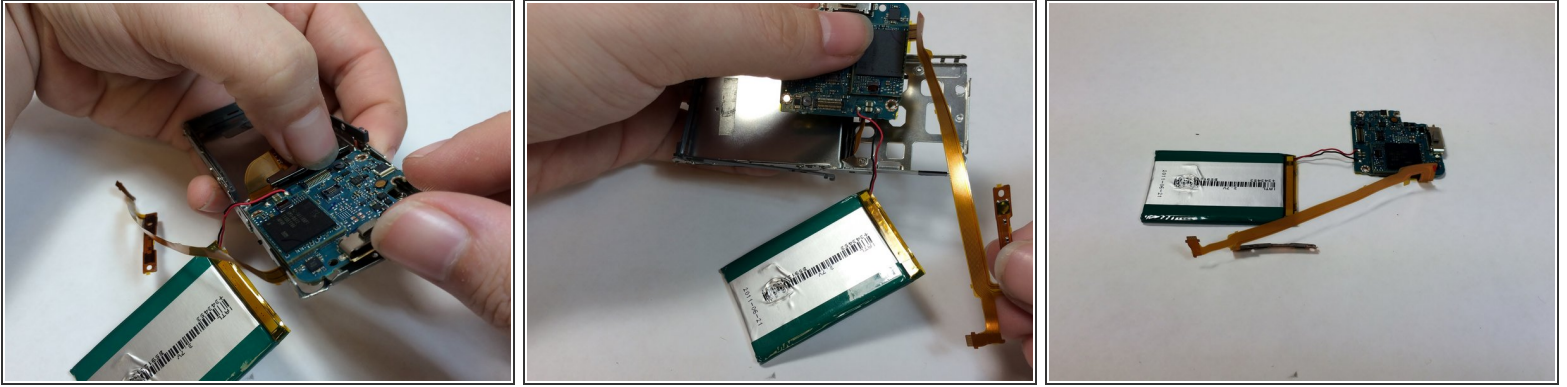
## Step 18



- Lift up on the LCD ribbon and remove the two 1.8mm silver Phillips screws.



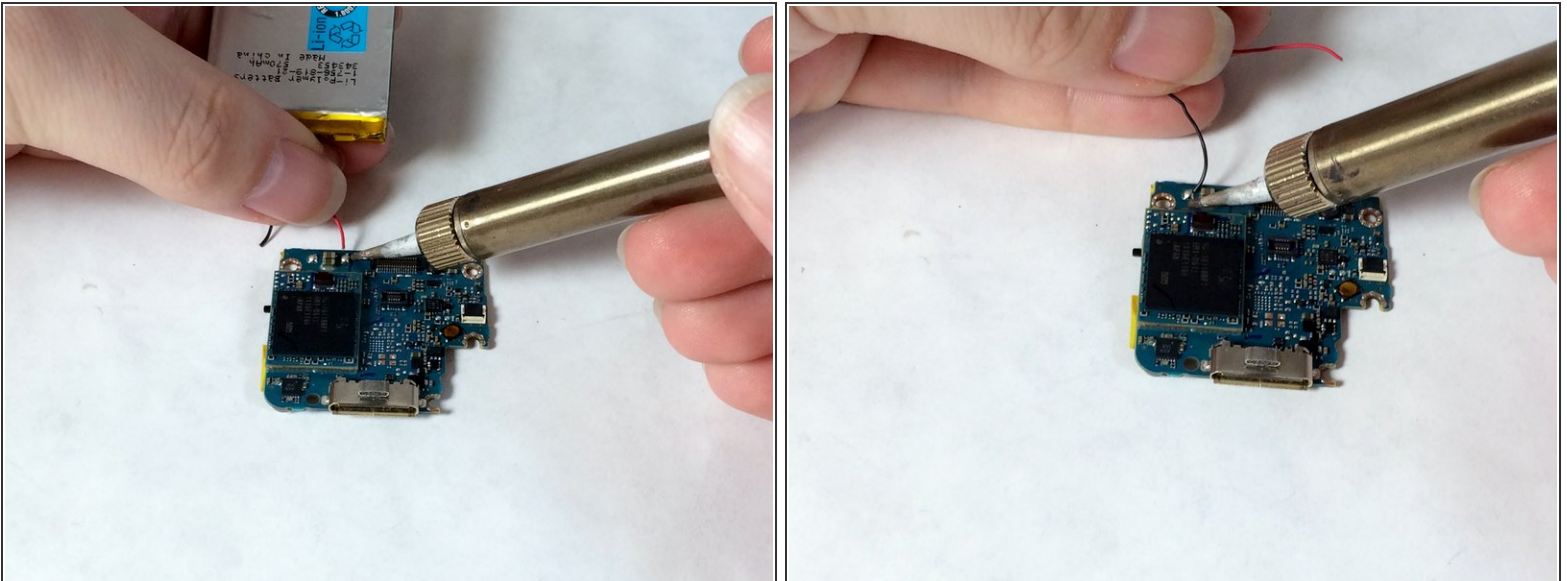
## Step 19



- Lift the motherboard away from the frame with your thumb to remove it from the device.
- Pull the volume control module through the space in the frame.

⚠ If you are using the magnetic project pad or other magnetic surface to keep your screws, do not place the hard drive on or near the magnet.

## Step 20 — Battery



- At this point, you will need to de-solder the existing contacts and solder the new battery in place. Please refer to iFixit's guide on soldering. [How To Solder and Desolder Connections](#)

To reassemble your device, follow these instructions in reverse order.