



# Sony Walkman NWZ-S764 LCD Screen Replacement

Guide to replace LCD screen.

Written By: Matthew Olson



# INTRODUCTION

This tutorial will guide you in replacing the LCD display and cover.



## TOOLS:

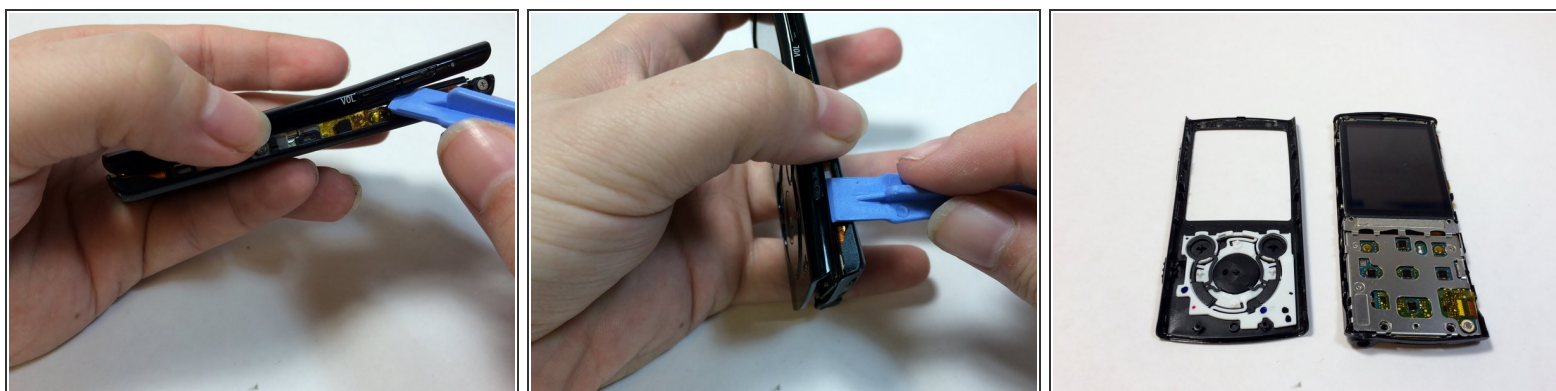
- [Phillips #00 Screwdriver](#) (1)
  - [iFixit Opening Tools](#) (1)
  - [Spudger](#) (1)
  - [iFixit Opening Picks set of 6](#) (1)
  - [iOpener](#) (1)
-

## Step 1 — Removing the back cover



- Remove the two black 6.4mm Phillips screws from the back of the device.

## Step 2



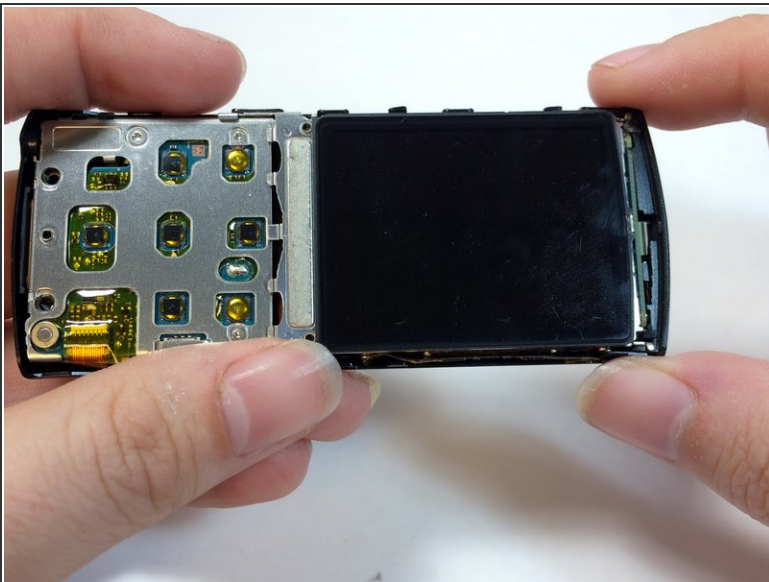
- Using a plastic opening tool, work your way around the edges of the device, carefully prying off the front panel.

### Step 3



- Remove the two 2.8 mm phillips screws located on either side of the device near the top.

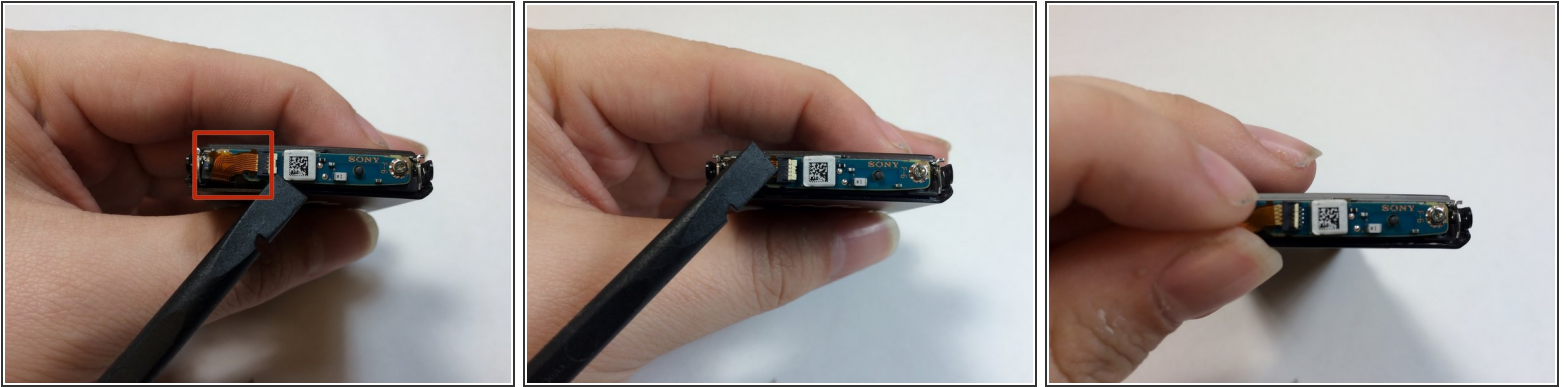
### Step 4



- Carefully pull the top piece away from the device.



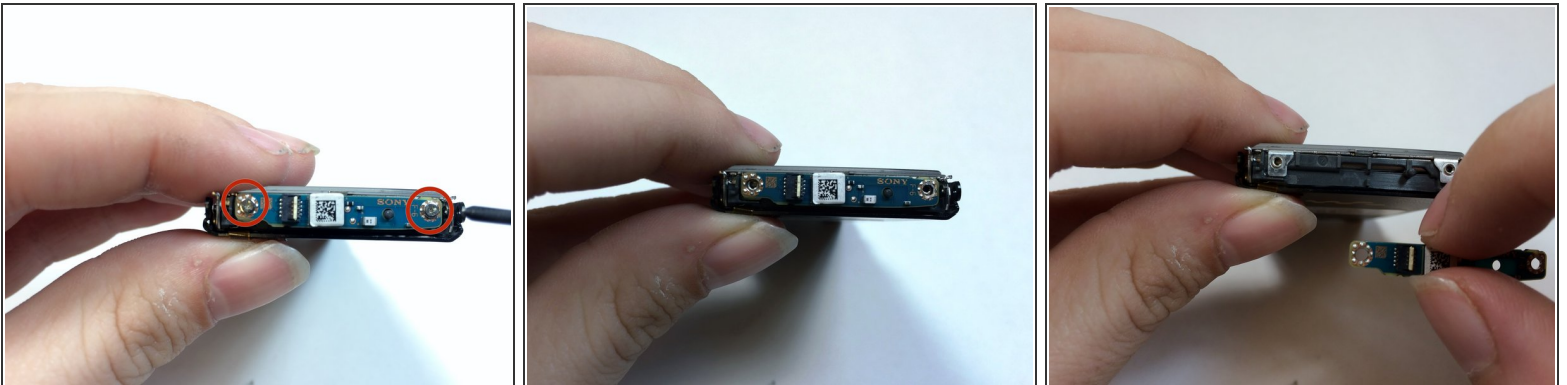
## Step 5 — Removing the Bluetooth module



- Use the flat end of the spudger to flip up the retaining flap for the bluetooth module.

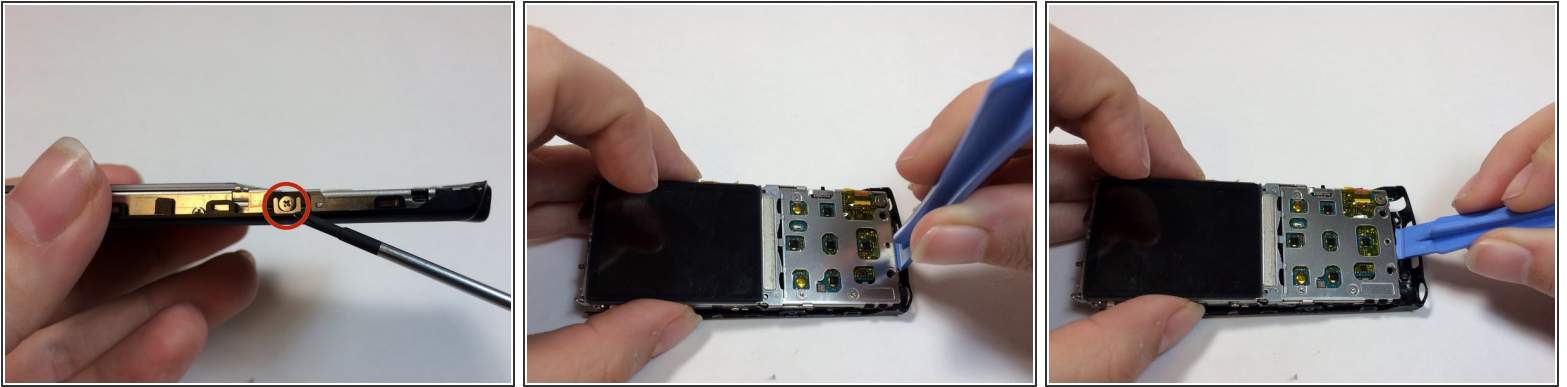
⚠ Be sure to lift up on the retaining flap, and not the socket itself.

## Step 6



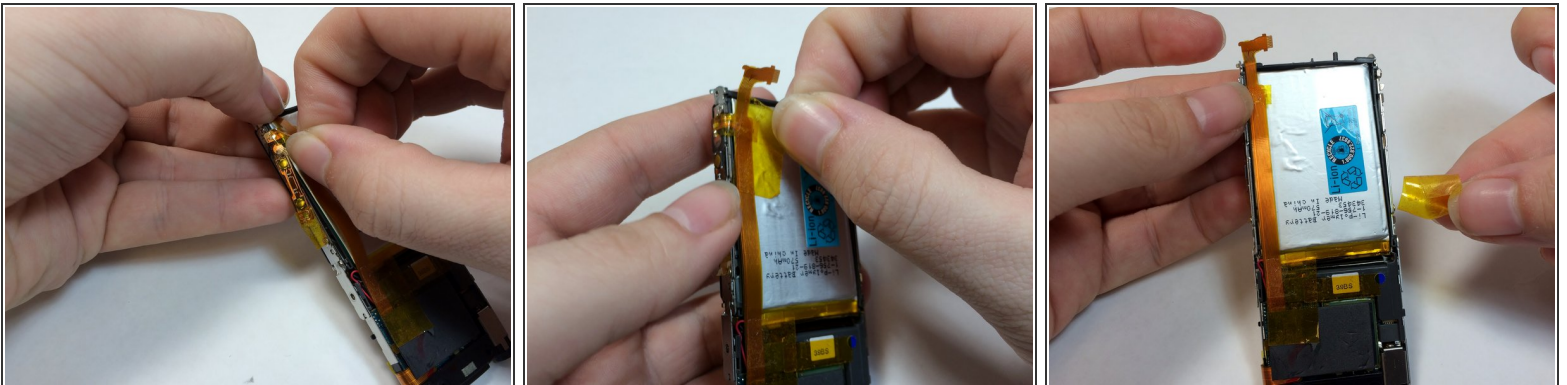
- Remove the two 1.8mm silver Phillips screws on the Bluetooth module.
- Lift up on and remove the Bluetooth module.
- ⓘ The ribbon cable must first be removed in order to access the highlighted screw.

## Step 7 — Audio Port



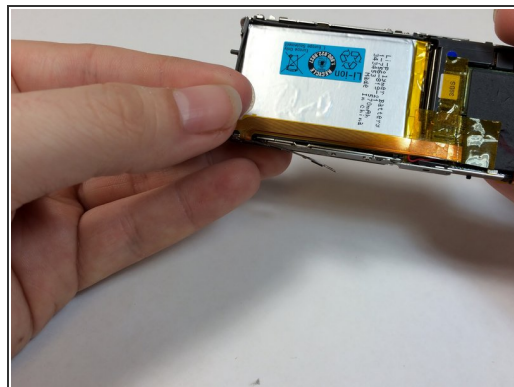
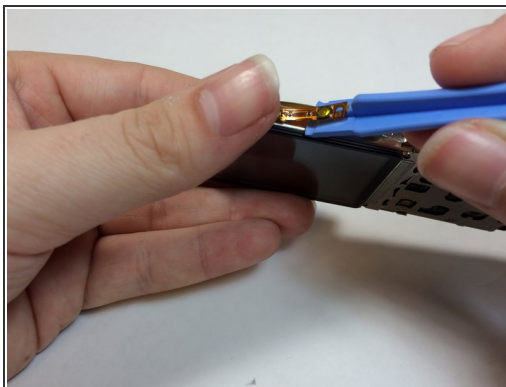
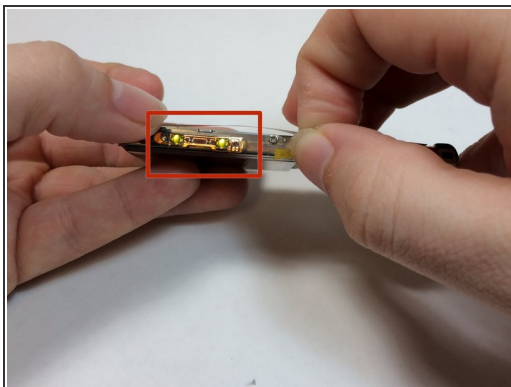
- Remove the two 2.8mm silver Phillips screws on the sides of the frame.
- ⓘ The two 2.8mm screws are on each side of the device.
- Insert a plastic prying tool between the bottom of the case and the motherboard.
- Pry up the assembly and lift it away from the case.

## Step 8



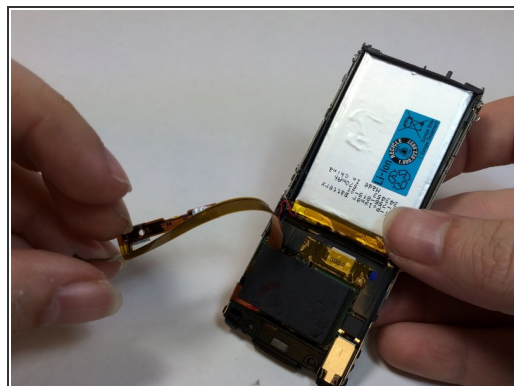
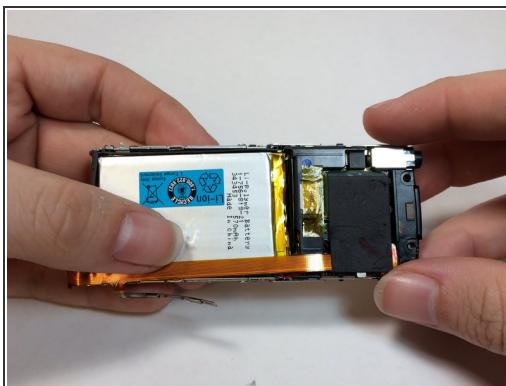
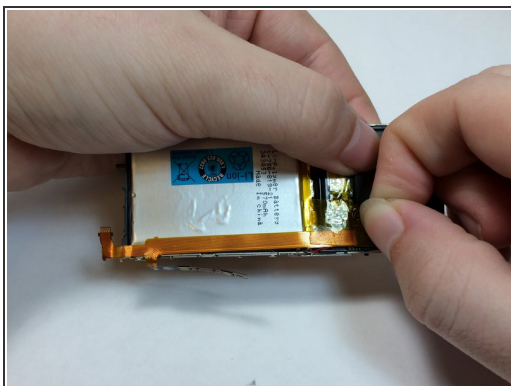
- Remove the yellow tape from the battery and volume control module.
- ⓘ Save tape for reassembly.

## Step 9



- Use a prying tool to pry under the volume control module.
- ⚠ This module is glued on, using too much force may damage or warp the module.

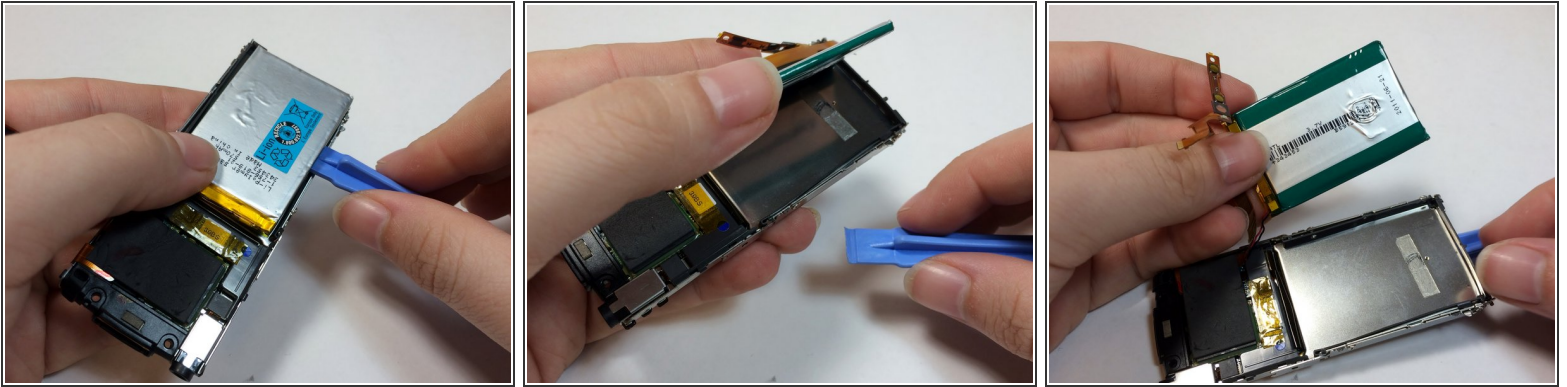
## Step 10



- Remove the tape from EMF shield and the LCD housing.
- Lift up on the volume control ribbon.



## Step 11

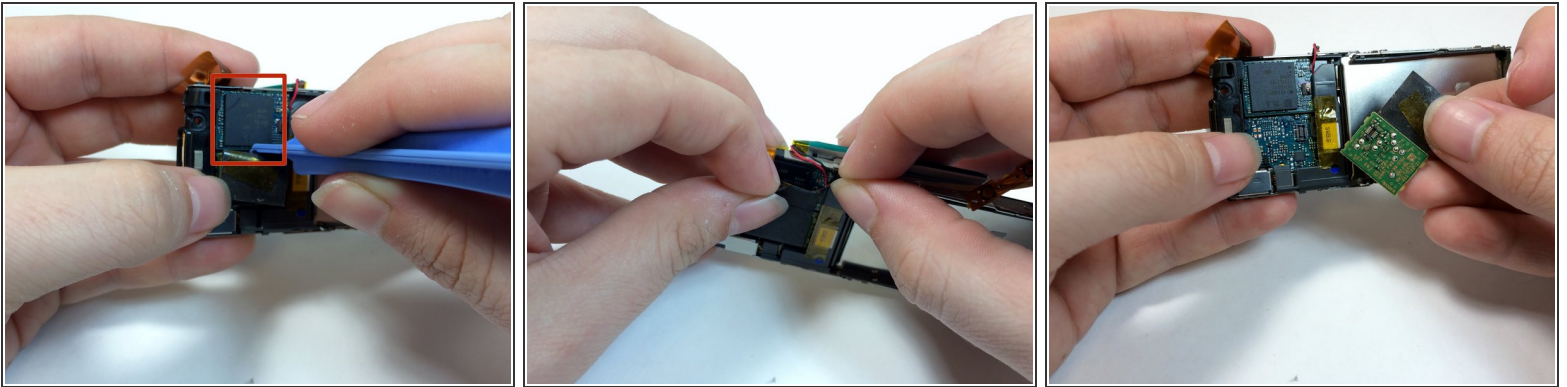


- Insert a plastic opening tool under the battery and lift up to remove it.

⚠ The battery is glued on, too much force may damage the battery casing.

⚠ The battery is soldered to the motherboard, care should be taken to not place too much stress on the wires.

## Step 12

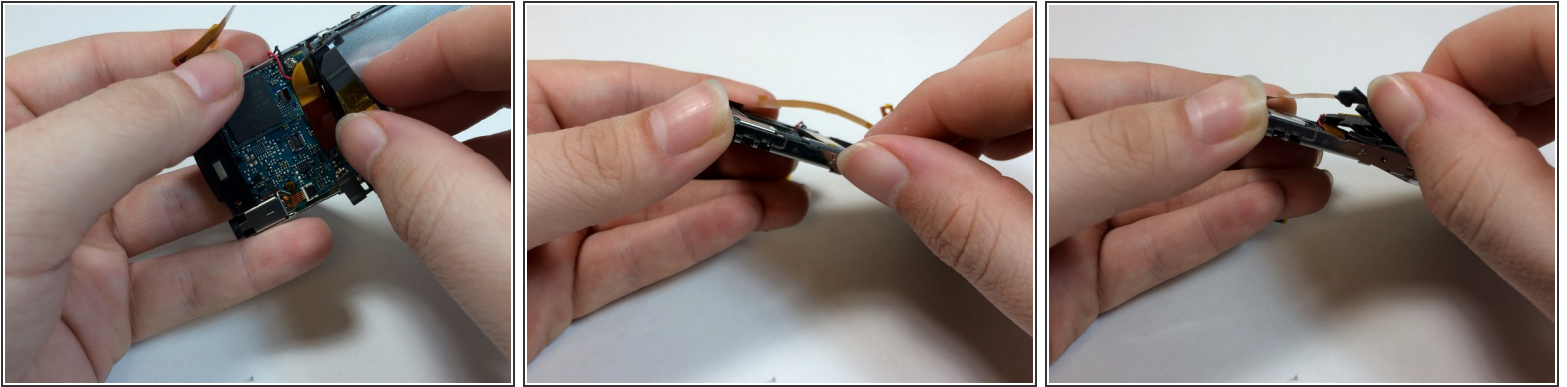


- Remove the black shielding tape from above the Hard Drive.
- Peel the foam cover away from the hard drive.
- Use a plastic opening tool to remove the EMF chip from the motherboard.

⚠ The hard drive is soldered onto the device. Be careful not to pull too hard on the hard drive.

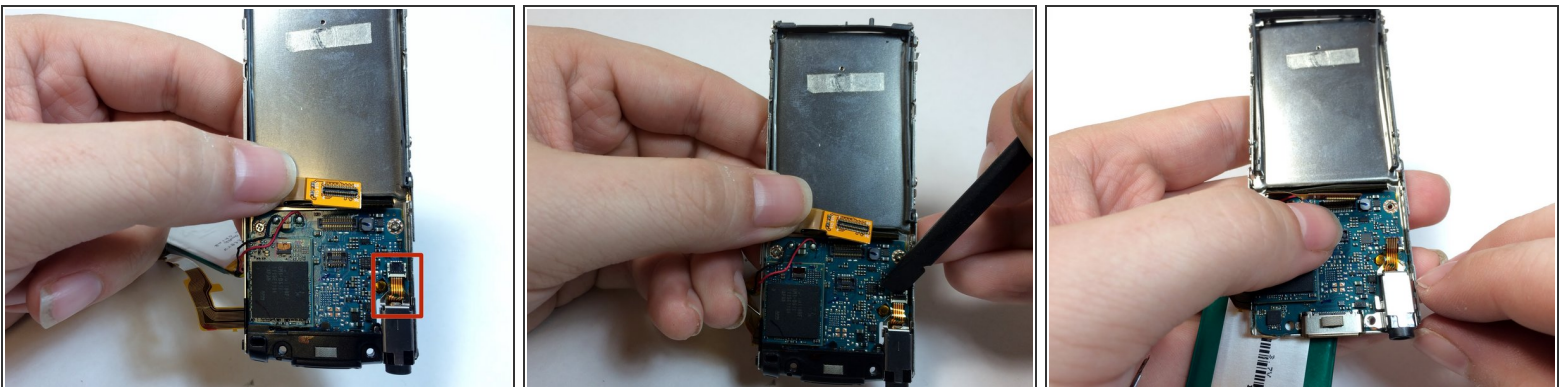


## Step 13



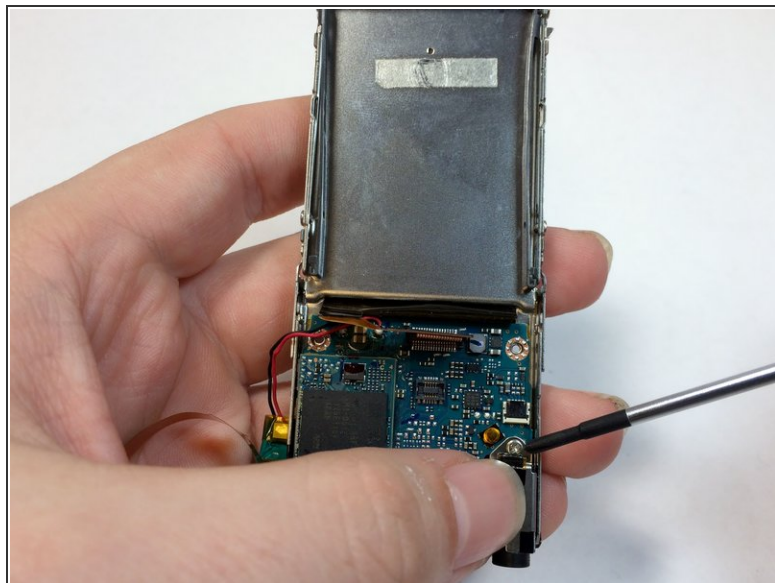
- Remove the plastic bracket by pushing up with your thumb to expose the display connection.

## Step 14



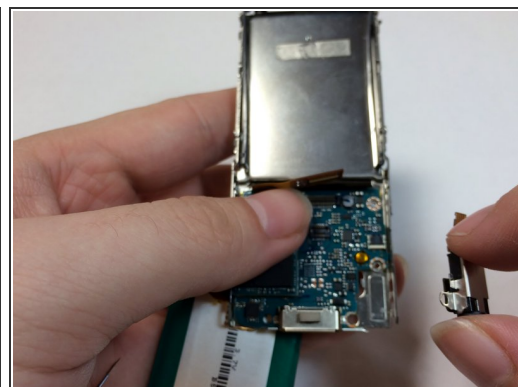
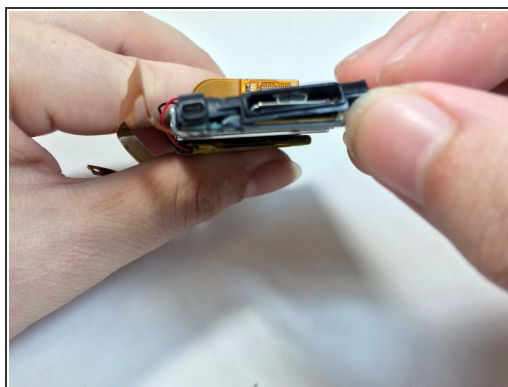
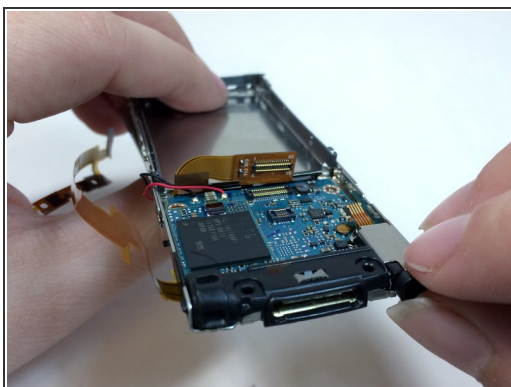
- Use the flat end of a spudger to flip up the retaining flap on the audio jack module.

## Step 15



- Peel back the ribbon for the audio jack and remove the 1.8mm silver Phillips screw.

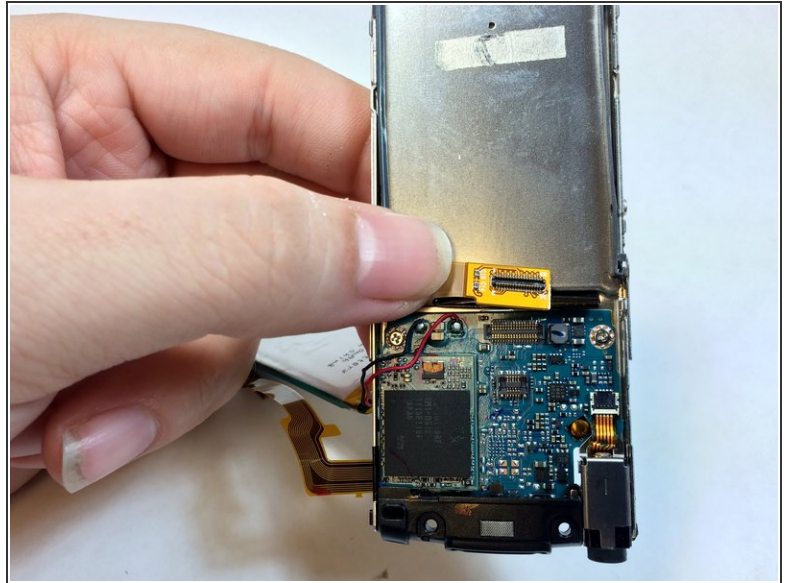
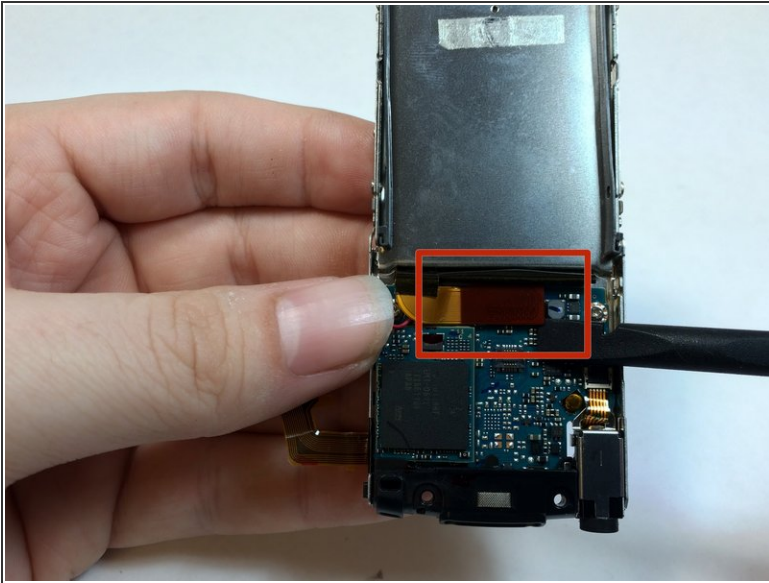
## Step 16



- Remove the mic casing by pushing up and in.
- Remove the headphone jack and the bottom casing.

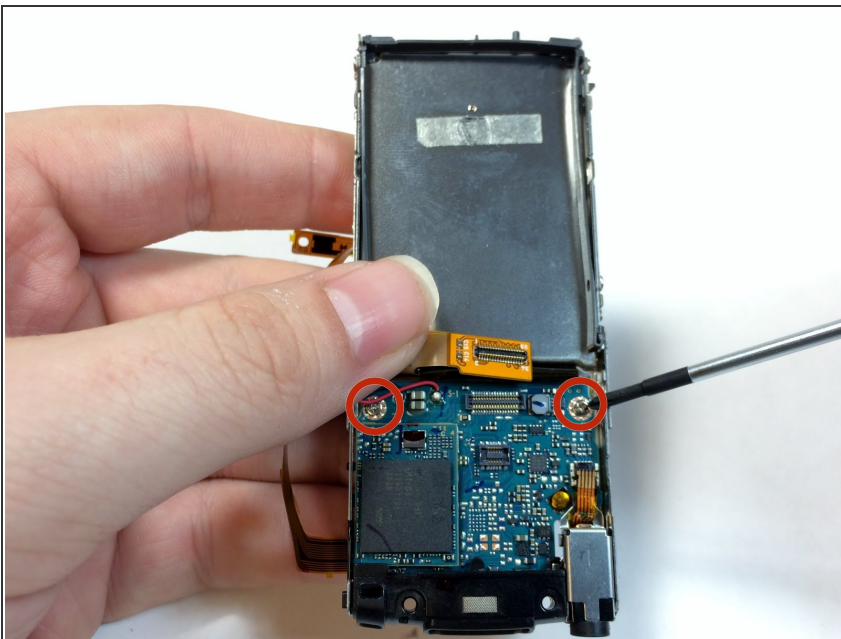


## Step 17 — Motherboard



- Use the prying tool to remove the LCD ribbon wire.

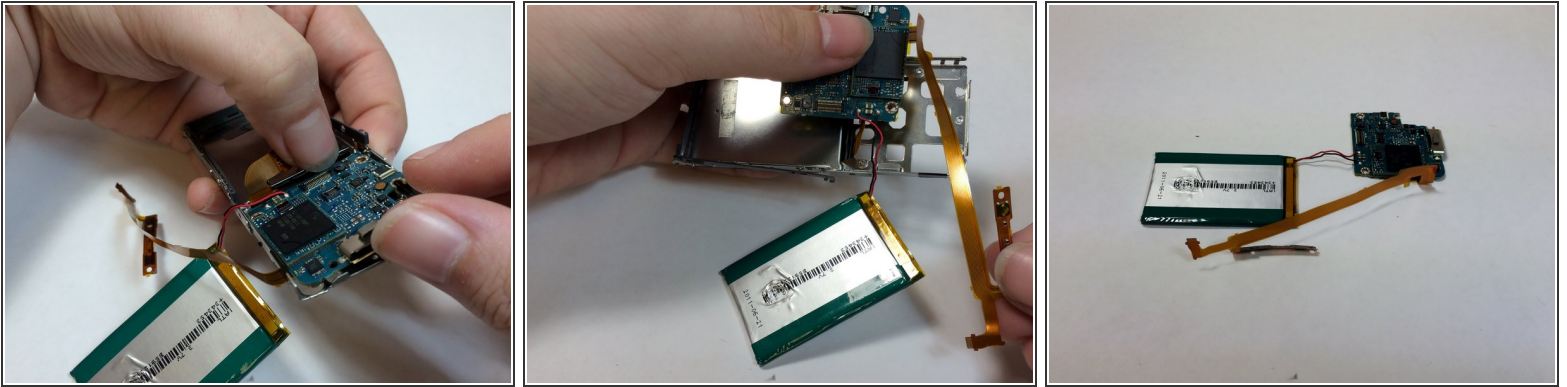
## Step 18



- Lift up on the LCD ribbon and remove the two 1.8mm silver Phillips screws.



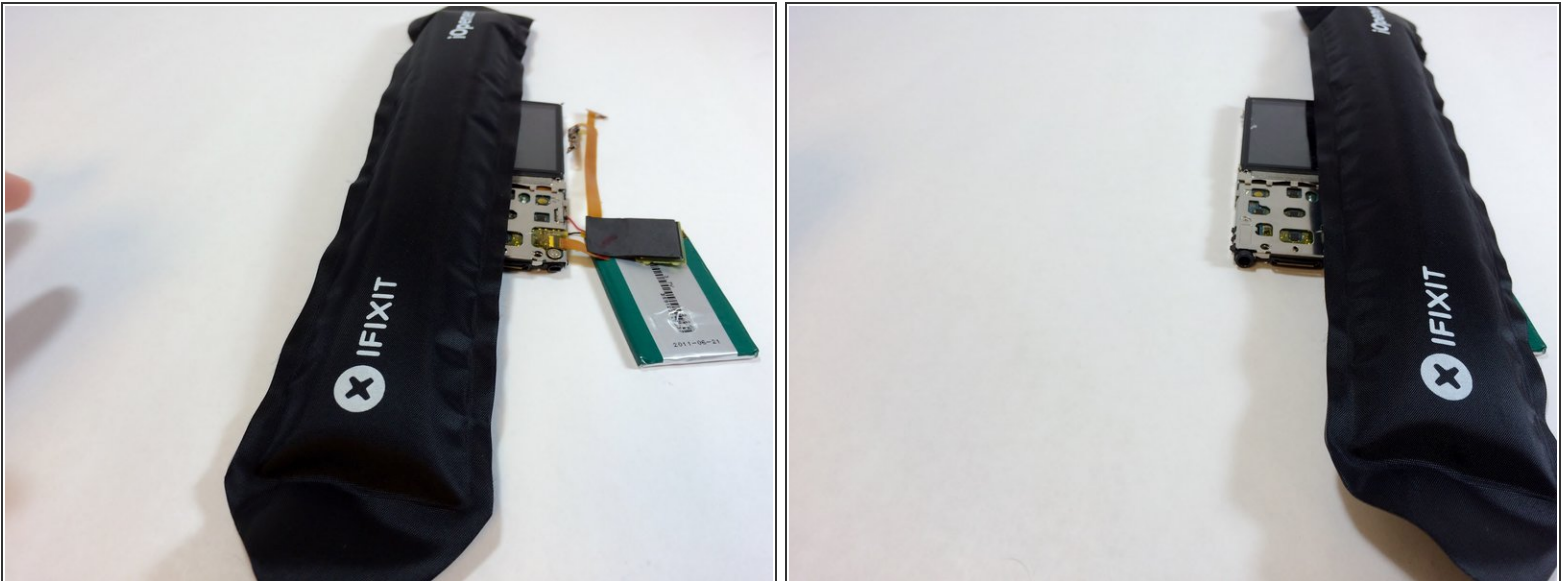
## Step 19



- Lift the motherboard away from the frame with your thumb to remove it from the device.
- Pull the volume control module through the space in the frame.

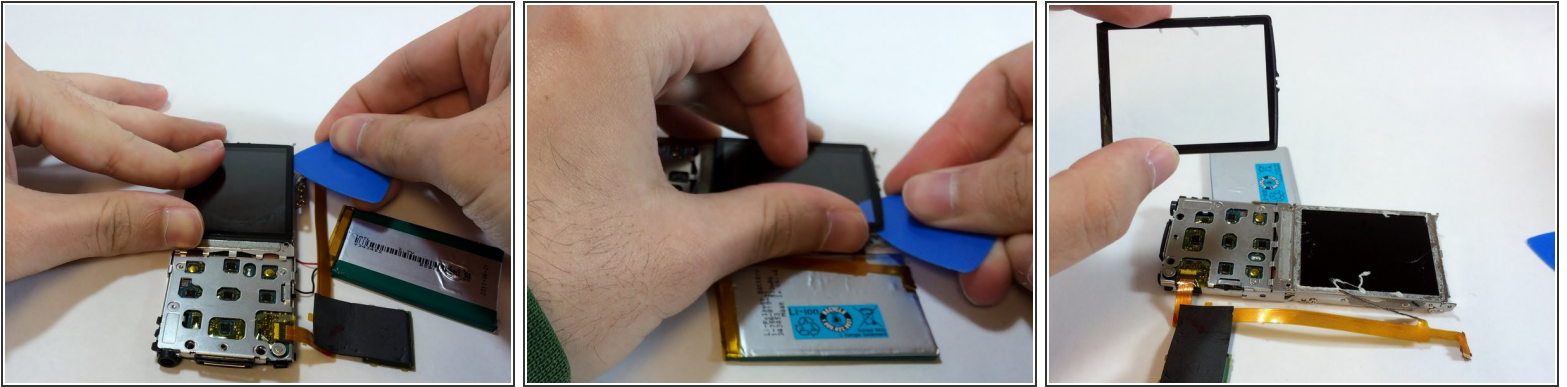
⚠ If you are using the magnetic project pad or other magnetic surface to keep your screws, do not place the hard drive on or near the magnet.

## Step 20 — LCD Screen



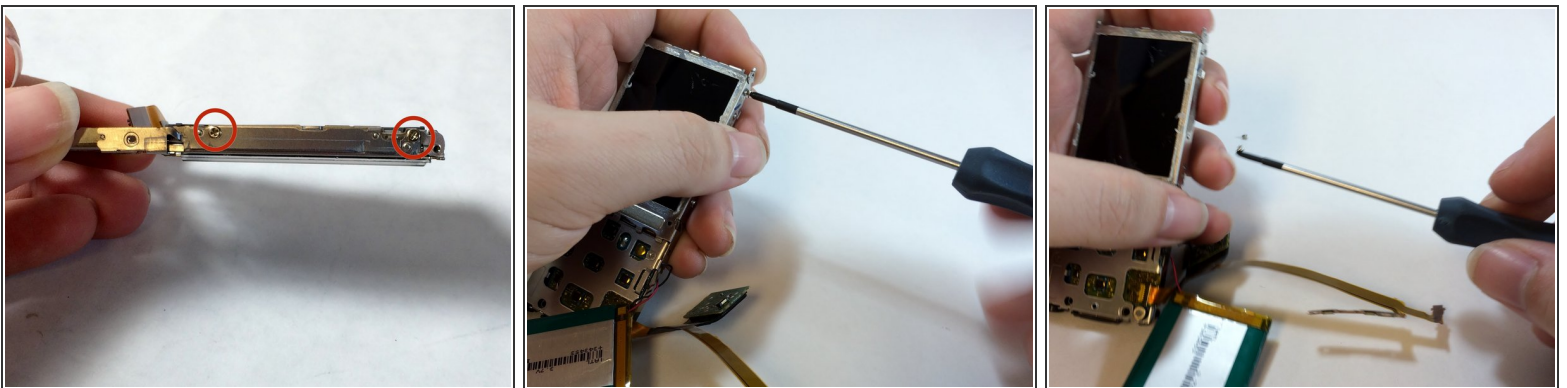
- To remove the LCD display cover, first melt the glue with the iOpener tool.
- For more detailed instructions on how to use the iOpener, see [iOpener Instructions](#)

## Step 21



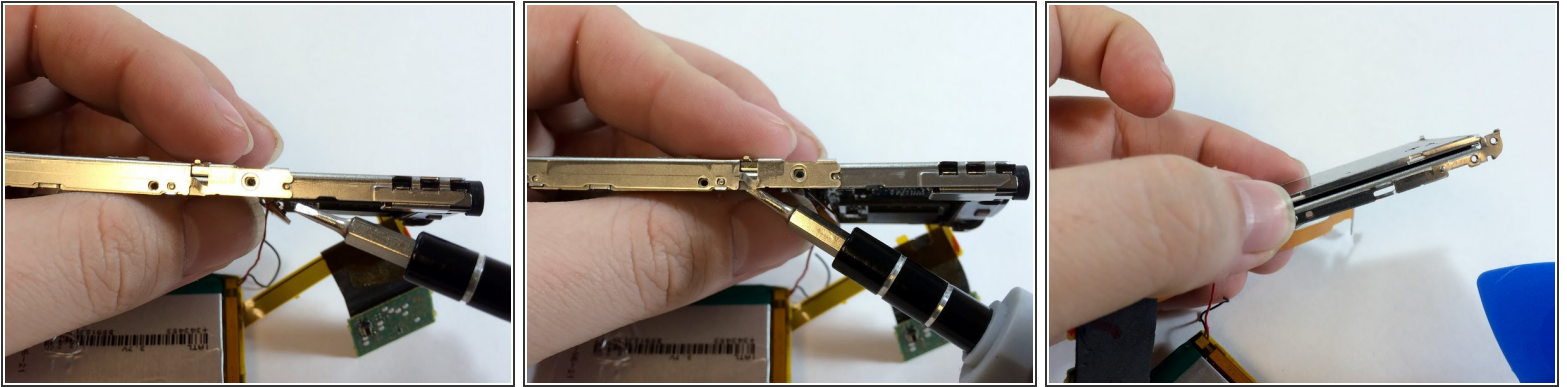
- Carefully slide the iOpener wedge tool under the edge of the LCD display cover to separate it from the device.
- Slide the wedge under all edges of the cover.
- Once all of the glue has been broken, you can pull up on the cover to remove it.
- The flat side of the spudger tool also works for this step

## Step 22



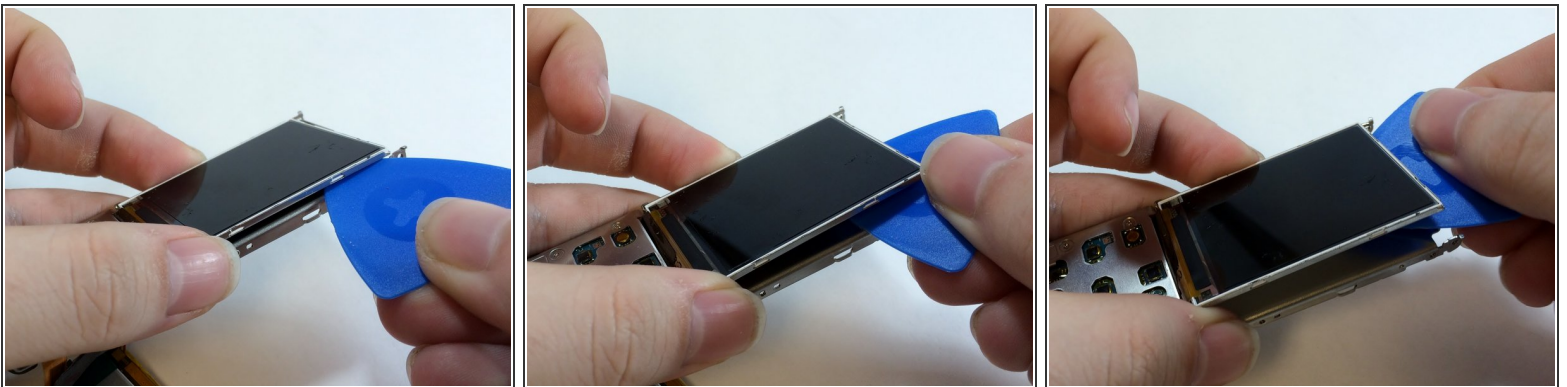
- Remove the two 1.8 mm Phillips screws from both sides of the frame.

## Step 23



- Use a strong pry tool to lift the metal brackets away from the device. You will need to bend the metal slightly to remove it from the dimples.
- ☑ This step will require slight force to separate the frame. Do not bend the brackets too far so that they can be replaced later.
- Once separated, pull the innermost frame containing the LCD display away from the brackets.

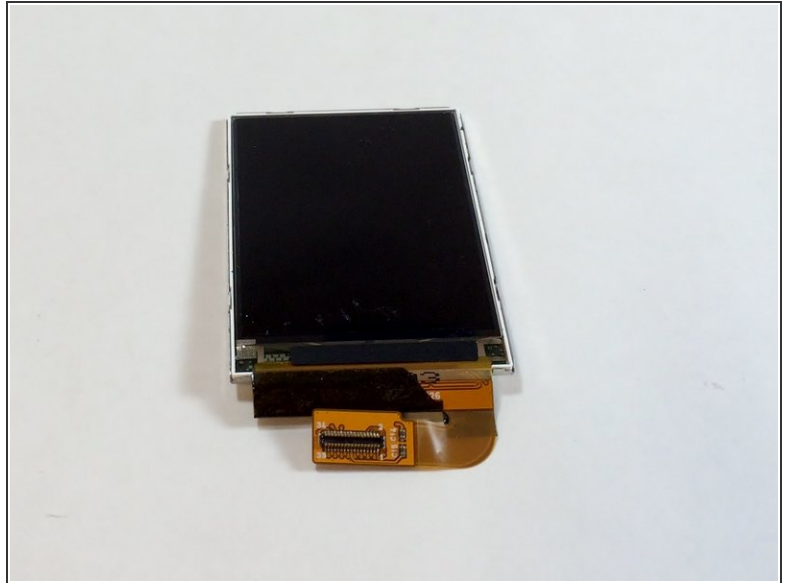
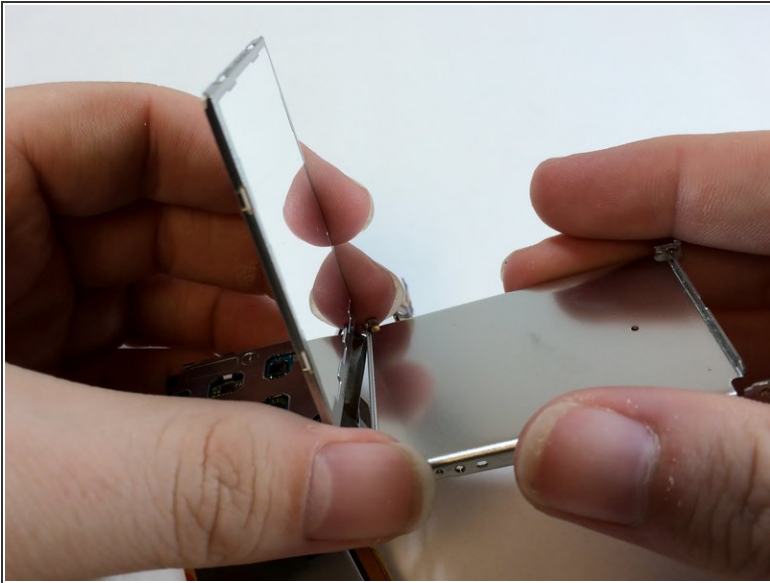
## Step 24



- Slide an opening pick under the LCD display to separate it from the rest of the device.
- ⓘ The pry tool also works for this step.



## Step 25



- Lift the LCD display off of the frame to remove it from the device.

To reassemble your device, follow these instructions in reverse order.