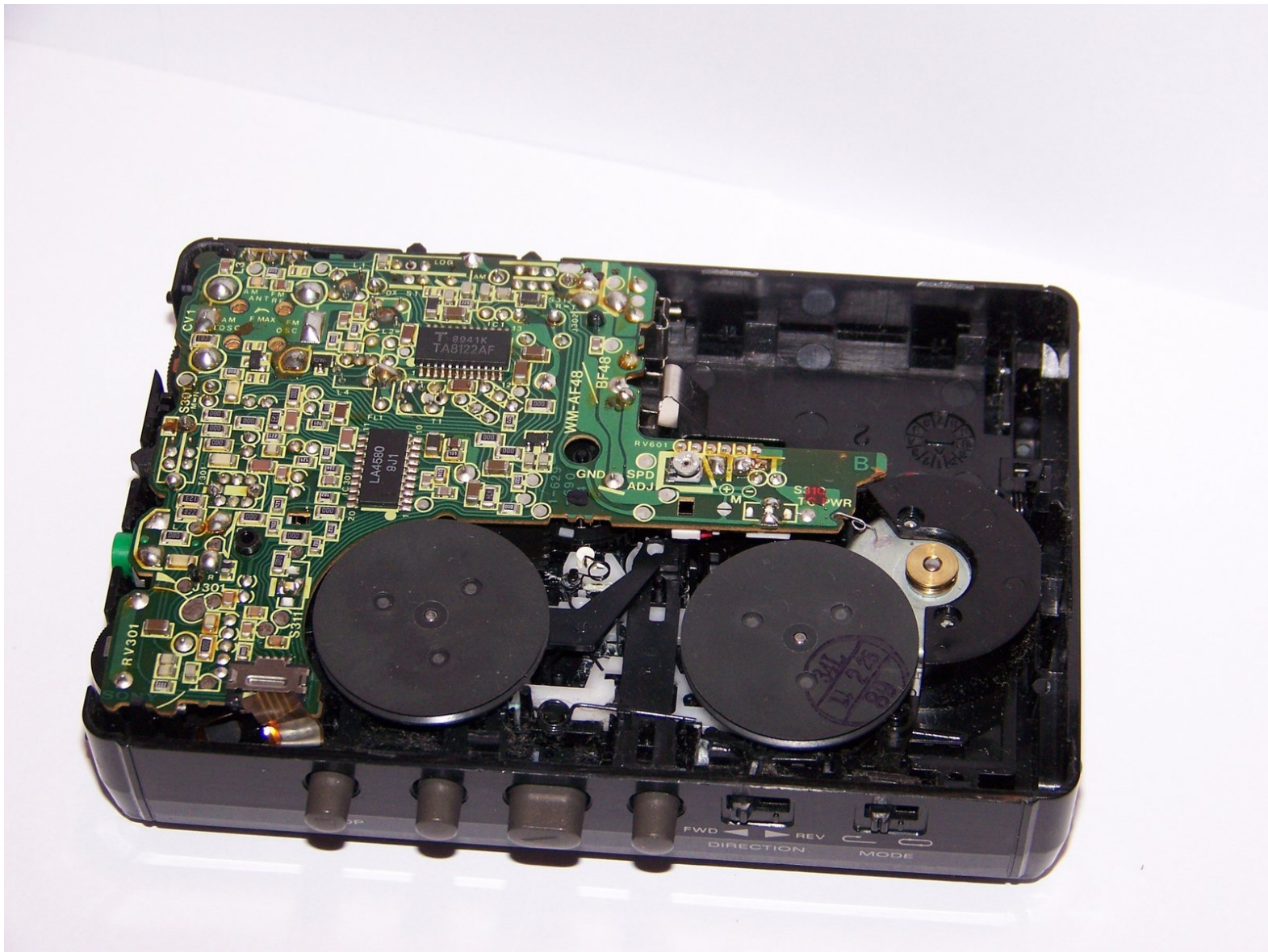




Sony Walkman WM-AF48 Film Revolver Band Replacement

There is a small band that connect the parts inside the Walkman that rotate the film in the cassette. This guide shows you how to replace the band.

Written By: Wilson Riforgiat



INTRODUCTION

If your Walkman is working but you cannot play cassettes, you may need to replace the band that connects the film revolvers. This guide shows you how to do so.



TOOLS:

- [Spudger](#) (1)
-

Step 1 — Getting started



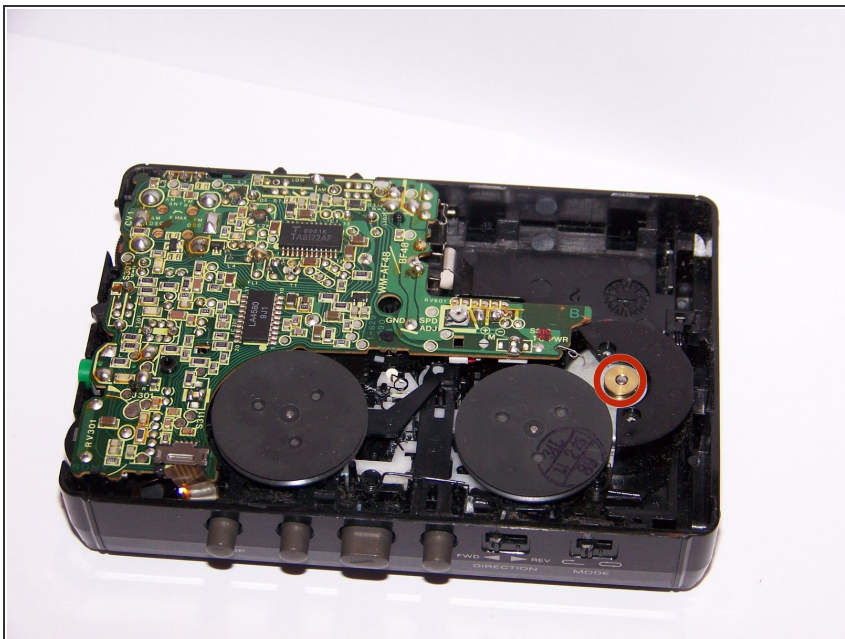
- Remove any batteries or cassettes from the Walkman.

Step 2 — Remove the outer cover



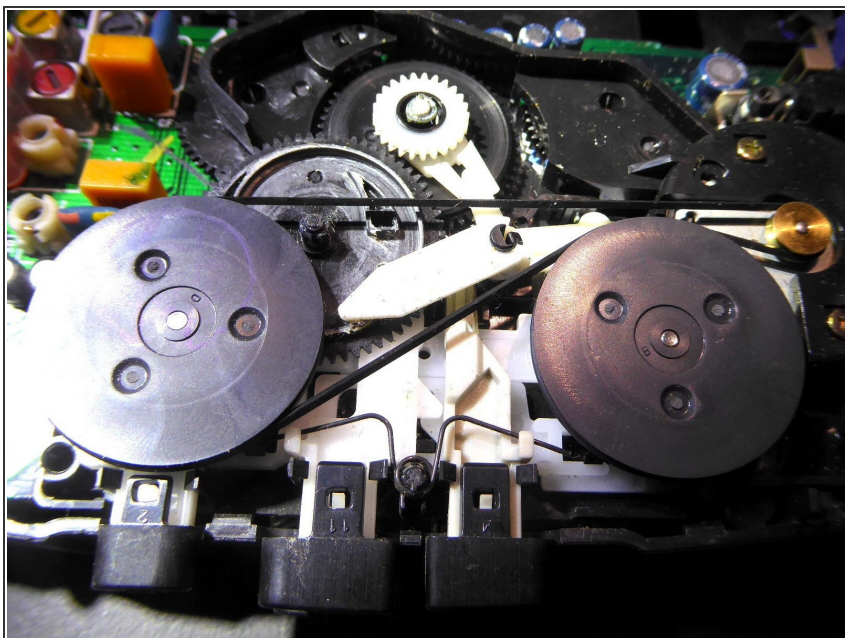
- Using a spudger, separate the back cover from the front.
- ⓘ Remove the back cover evenly on all sides. The best method is to insert the spudger and gently twist it slightly to separate the two parts, slowly working your way around the entire outer shell.

Step 3 — Replace the band



- Replace the band, ensuring that it wraps around both large plastic revolvers and the small metal one.

Step 4 — Belt track



- This picture shows how the belt was set when I opened a Walkman WM-FX10.
- I think you can rely on the same arrangement in other Walkman's

To reassemble your device, follow these instructions in reverse order.