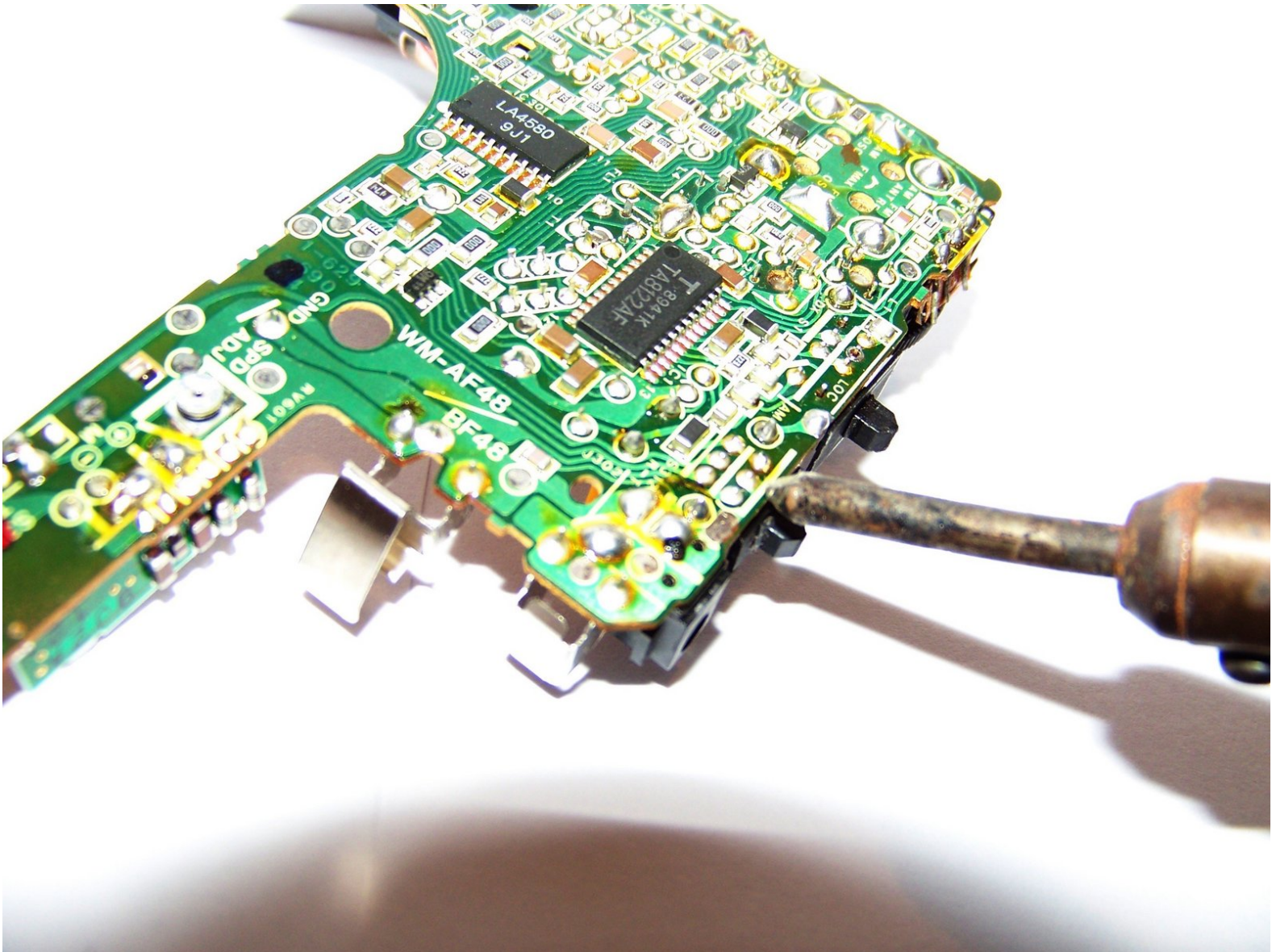




Sony Walkman WM-AF48 Power Switch Replacement

This guide will give you step-by-step instructions on how to replace the power switch on a Sony Walkman WM-AF48.

Written By: Wilson Riforgiat



INTRODUCTION

If your Walkman will not turn on and you are certain that the batteries are new or fully charged, you may need to replace the device's power switch. To do so, you will need a spudger and soldering iron.

TOOLS:

- [Spudger](#) (1)
 - [Portable Soldering Iron](#) (1)
-

Step 1 — Getting started



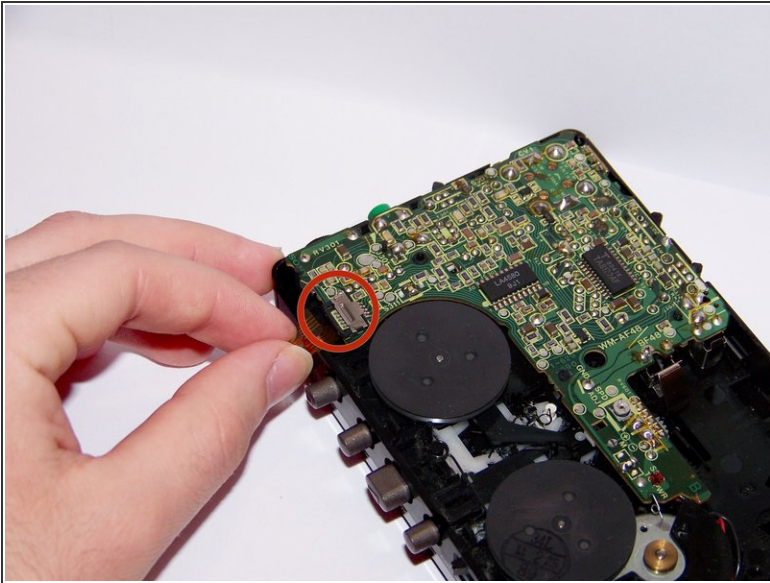
- Remove any batteries or cassettes from the Walkman.

Step 2 — Remove the outer cover



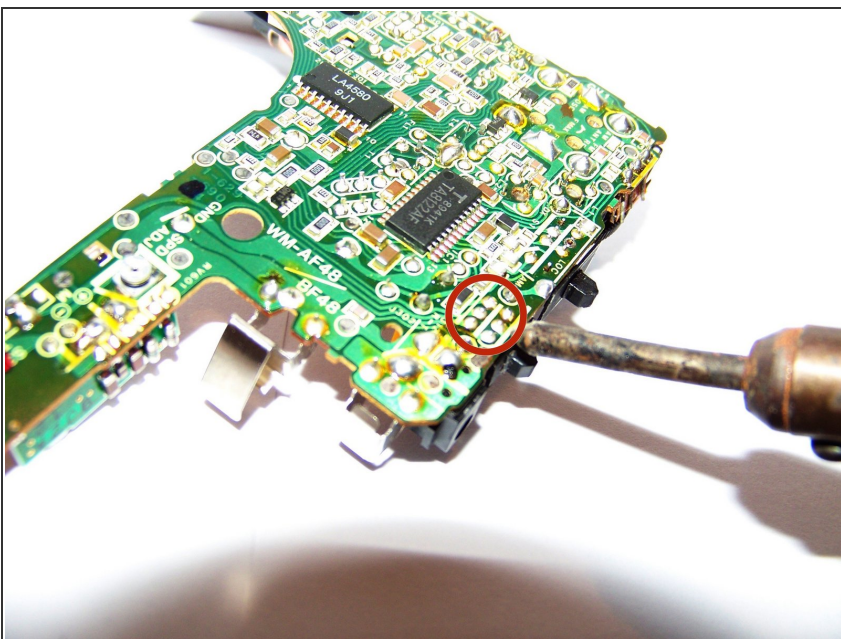
- Using a spudger, separate the back cover from the front.
- ⓘ Remove the back cover evenly on all sides. The best method is to insert the spudger and gently twist it slightly to separate the two parts, slowly working your way around the entire outer shell.

Step 3 — Remove the motherboard



- Gently pull the ribbon from the jack above the film revolver, near the edge.
 - Lift the motherboard from the outer shell.
- ⚠ Be careful to only handle the motherboard by the edges. Avoid touching the metal parts.

Step 4 — Remove the power switch



- Identify the six points where the power switch is soldered to the motherboard.
- Using a soldering iron, remove the switch by de-soldering these points which hold it in place.

To reassemble your device, follow these instructions in reverse order.