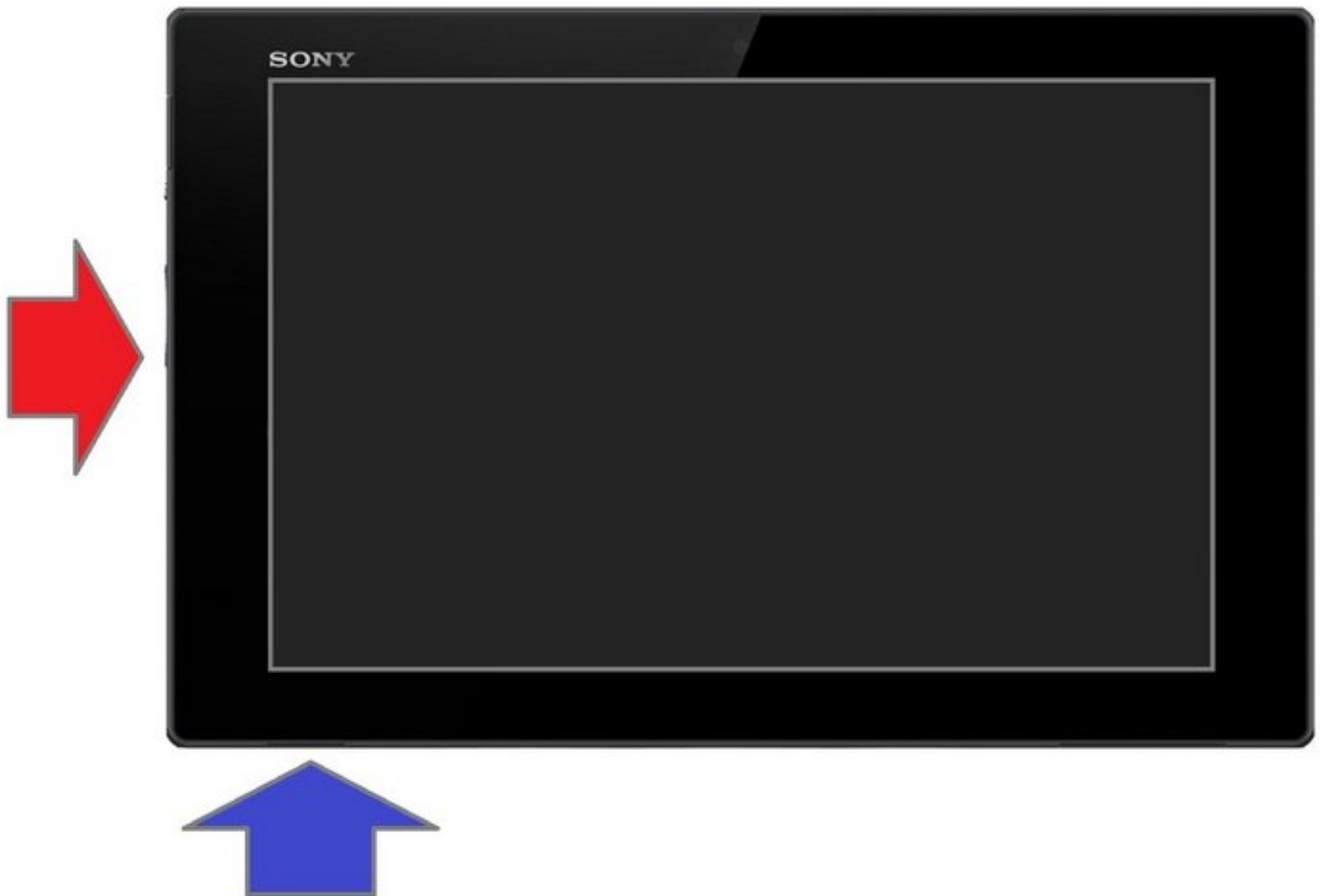




Sony XPERIA Tablet Z - Password Removal, Factory / Hard Reset, Firmware Update

Written By: ZFix



INTRODUCTION

In this manual we will show you how to do soft, hard (factory) reset and how to change firmware in case of forgotten Password, PIN, Pattern lock.

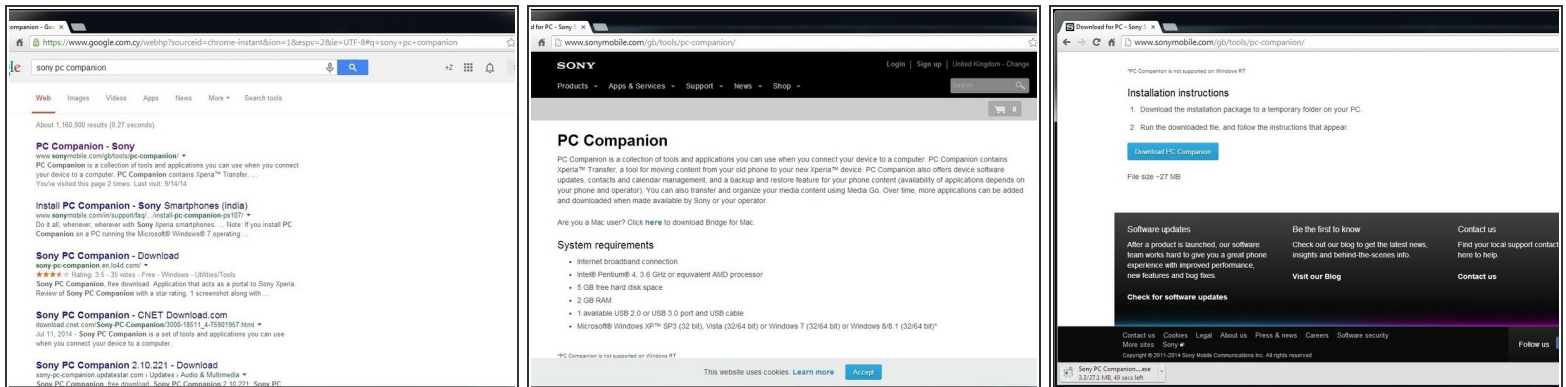
If you forgot your password and you can't log in your tablet with your Google account or backup PIN, then you must do factory reset.

This procedure will erase all your personal data.

[Please SUBSCRIBE to my channel ツ](#)

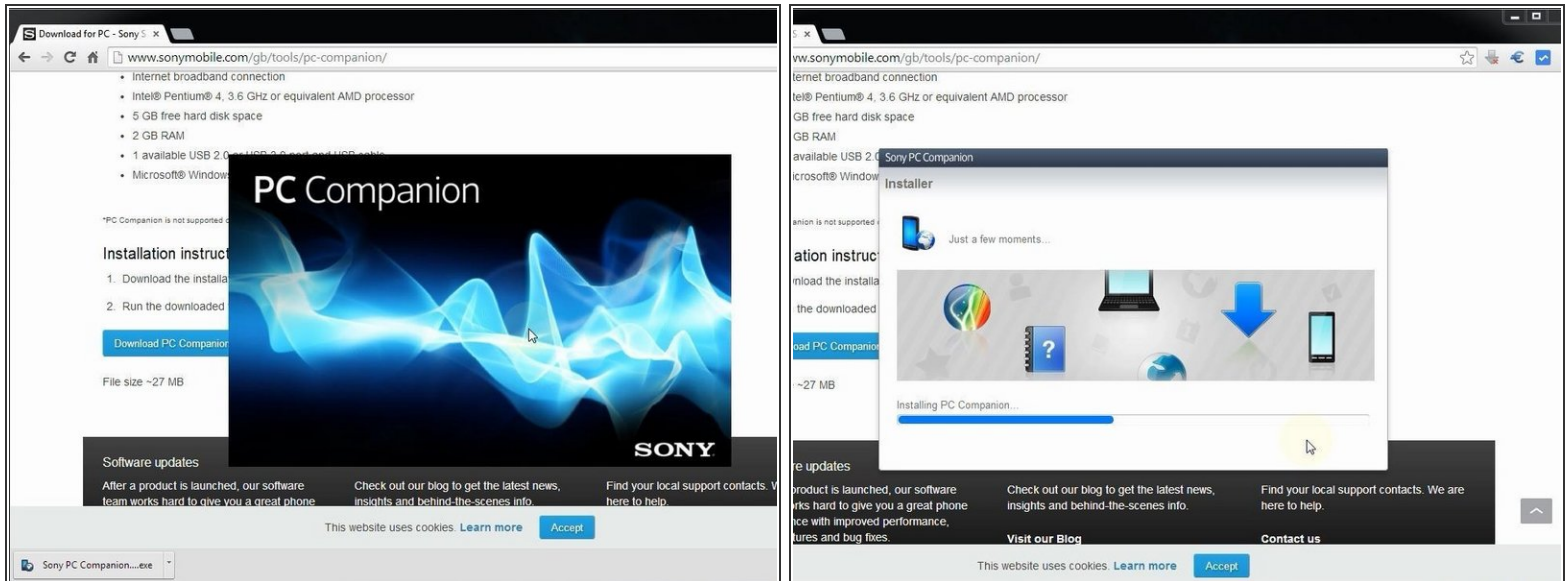
[video: <https://www.youtube.com/watch?v=u47fAYa0a4w>]

Step 1 — Sony XPERIA Tablet Z - Password Removal, Factory / Hard Reset, Firmware Update



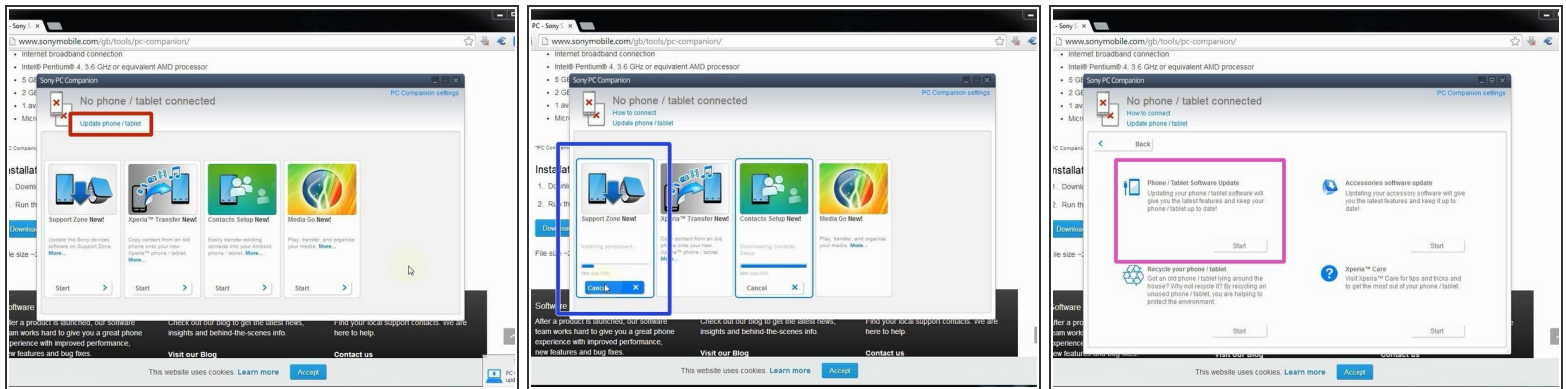
- Search and download Sony PC Companion or use the link below.
- [Sony PC Companion](#)

Step 2



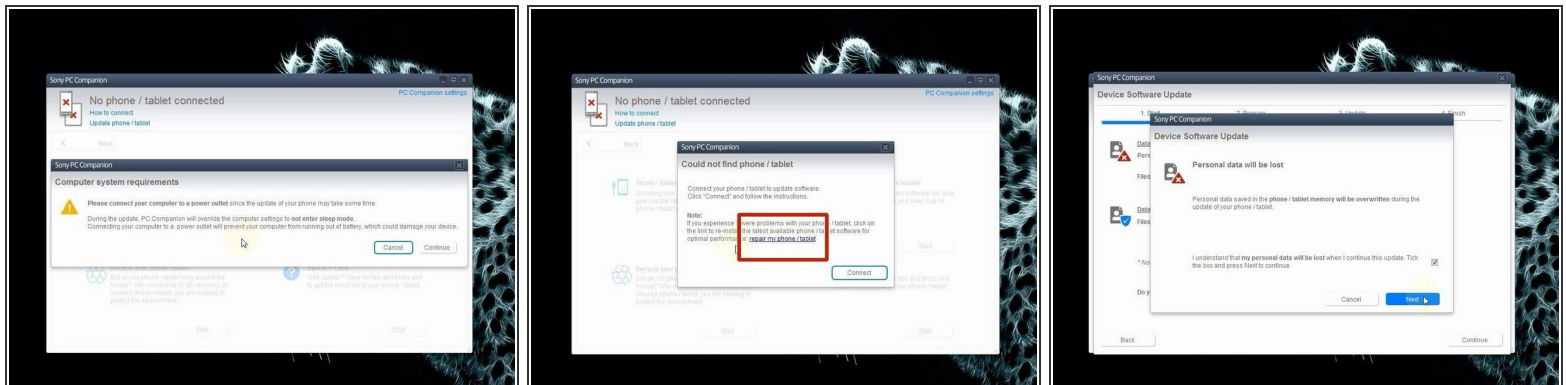
- Install PC Companion.

Step 3



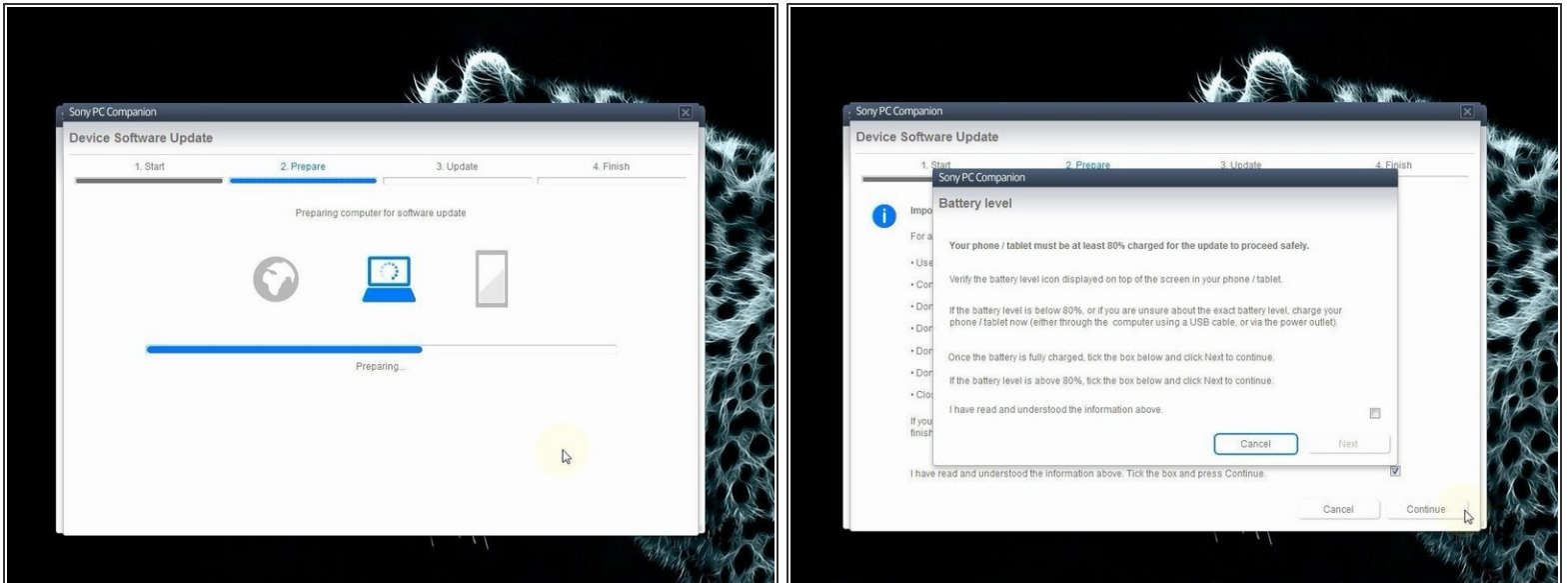
- From here you can update firmware to your device but it must be powered on not screen locked.
- Start "Support Zone".
- Select "Phone / Tablet Software Update".

Step 4




- ⚠ Your Laptop must be connected to the power adapter.
- Select "repair my phone / tablet".
- ⚠ The last warning for your personal data.

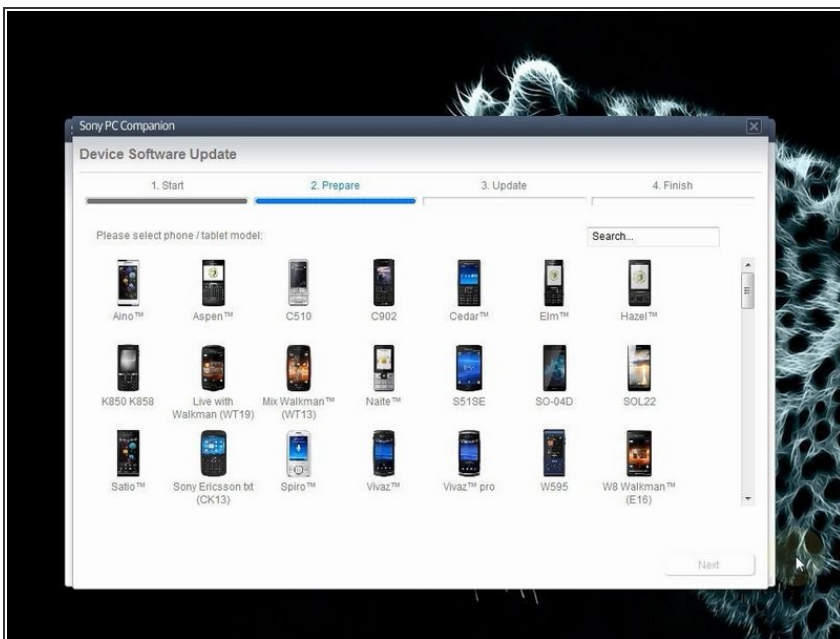
Step 5



- PC Companion will download some files to prepare your PC for update.

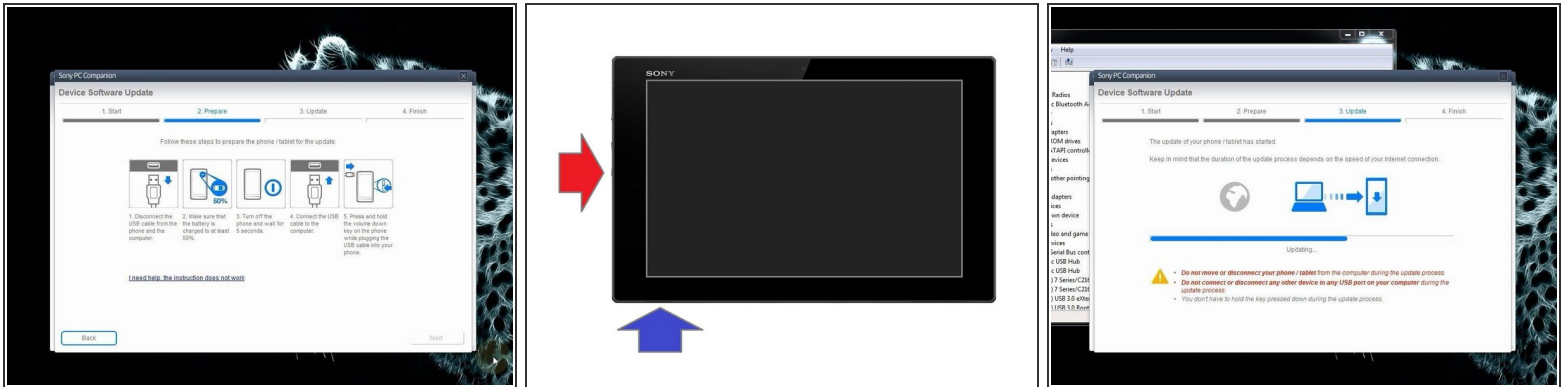
 Your battery of the tablet must be charged at last 80%.

Step 6



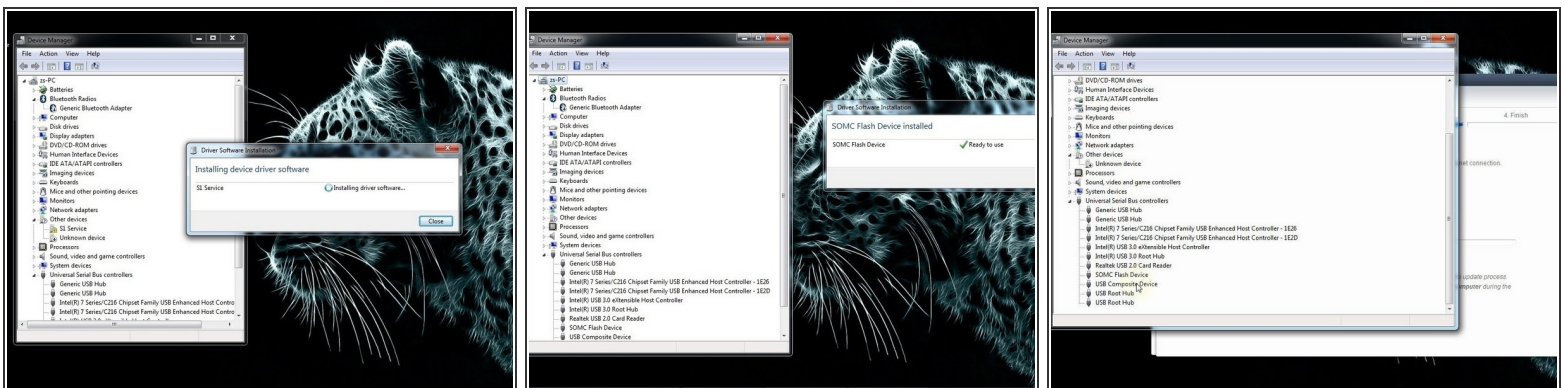
- Select your device.

Step 7



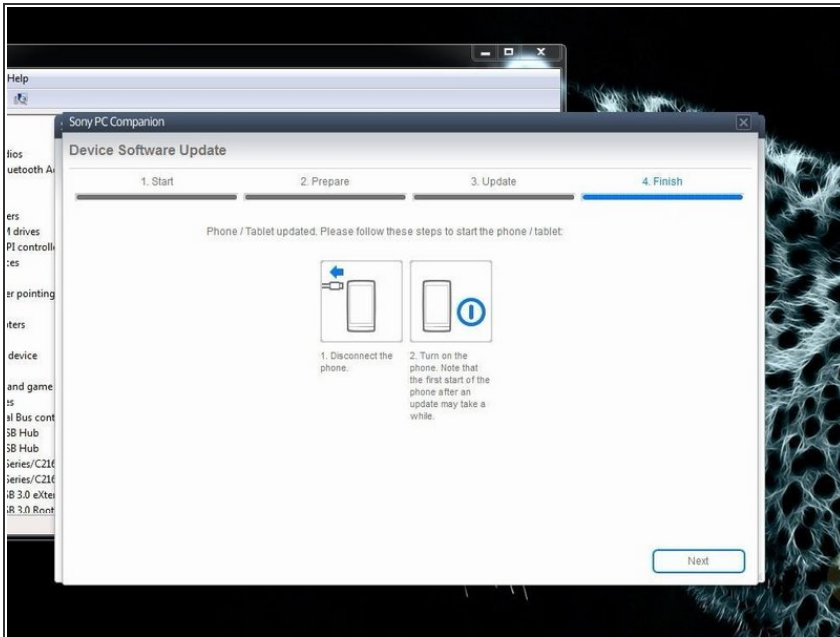
- Switch off the tablet. If you can't do this, press and hold for more time the power on button.
- Press and hold the volume down button until you connect the micro USB cable.
- When the PC recognized the device, PC companion will download the latest firmware version and will upload it to your tablet.

Step 8



- If your PC can't recognize your tablet, you must install drivers for it. Search in the internet for "S1Boot Fastboot" drivers, or download the drivers from the link below.
- [F1Boot Fastboot drivers](#)

Step 9



- When PC Companion finished, disconnect the tablet and switch it on.
- The device is at factory state, with the latest firmware version and erased security protection.
- .
- **Did you do it successfully?**

★ [Please SUBSCRIBE to my channel ツ](#)

To reassemble your device, follow these instructions in reverse order.