



Sony Xperia E3 Battery Replacement

Sony Xperia E3 Battery Replacement

Written By: ZFix



INTRODUCTION

Sony Xperia E3 - How to disassemble the device and replace the battery.

D2202, D2203, D2206, D2243, D2202

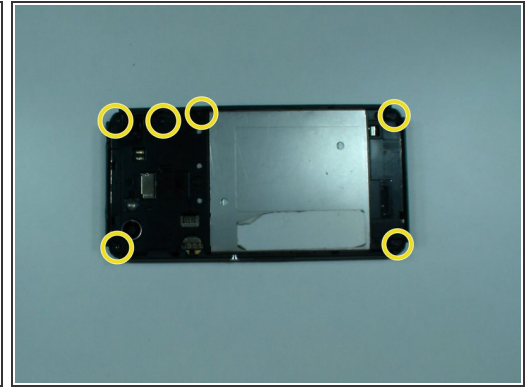
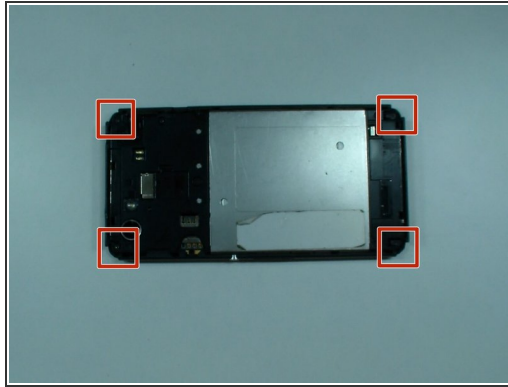
[video: <https://www.youtube.com/watch?v=cgfp4qjnBg0>]



TOOLS:

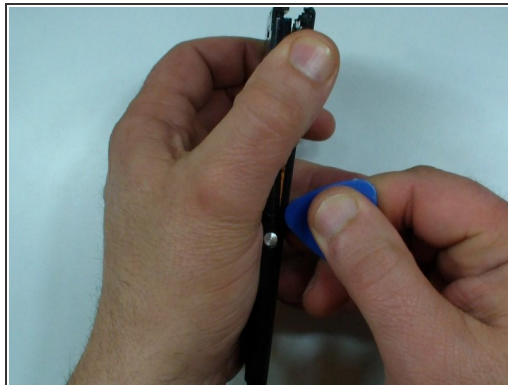
- [iFixit Opening Picks set of 6](#) (1)
 - [T4 Torx Screwdriver](#) (1)
 - [Heat Gun](#) (1)
-

Step 1 — Turn of the Phone



- Turn off the device
- Remove the SIM and the memory cards.
- Remove 4x rubber corners.
- There are 6x black screws Torx T4, remove them.

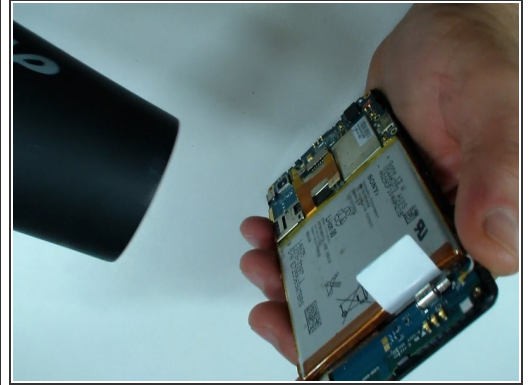
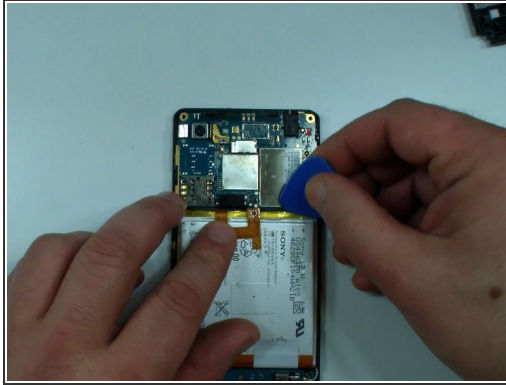
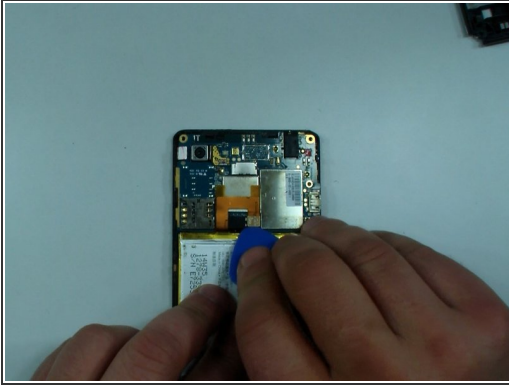
Step 2 — Rear Cover Removal



- Use a plastic tool and separate the rear bezel.

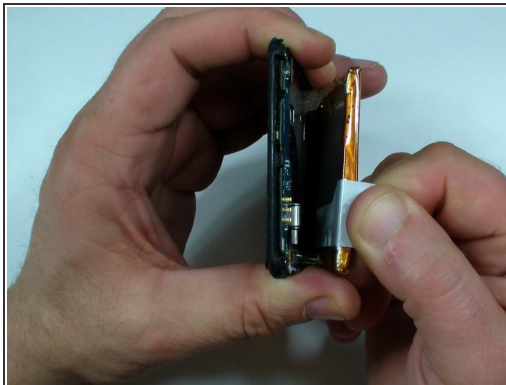
⚠ Be careful for the side buttons.

Step 3 — Battery Ribbon



- Disconnect the battery flex cable.
- Use a Hair dryer and warm little the battery.

Step 4 — Separating the Battery



- Use the white tape on the battery to separate it from the main frame.
- **Battery:**
- Li-ion, 2330 mAh
- model: LIS1551ERPC
- The same battery is for Xperia M2 and Xperia M2 Aqua.

To reassemble your device, follow these instructions in reverse order.