



Sony Xperia E3 Rear Bezel Replacement

Sony Xperia E3 Touch Screen Replacement

Written By: ZFix



INTRODUCTION

Sony Xperia E3 D2202, D2203, D2206, D2243, D2202 - How to remove the back cover.

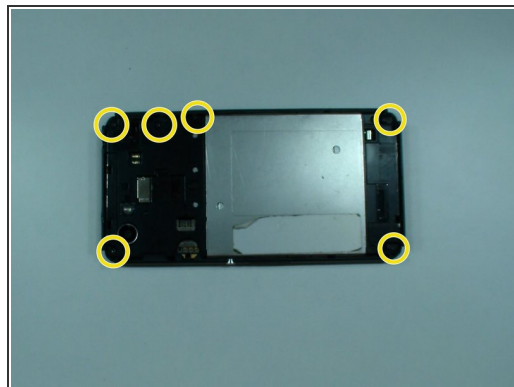
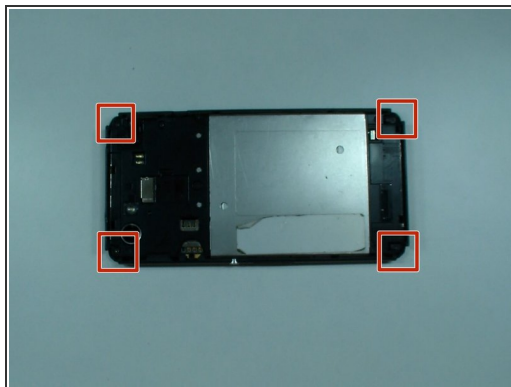
[video: <https://www.youtube.com/watch?v=cgfp4qjnBg0>]



TOOLS:

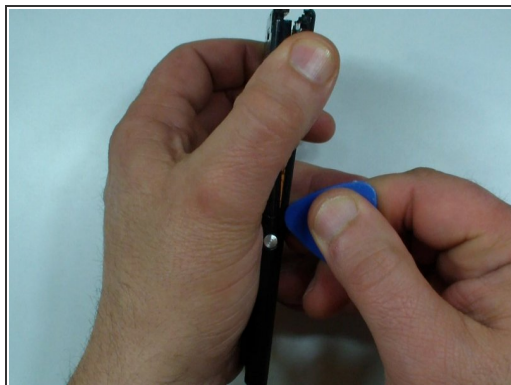
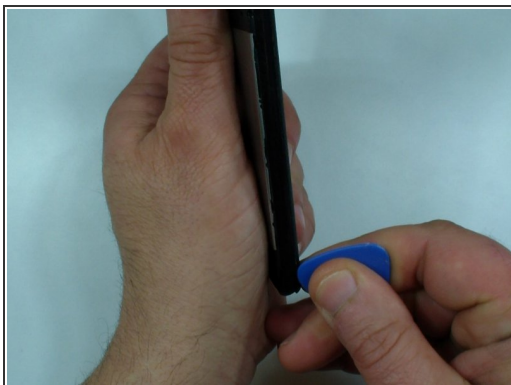
- [iFixit Opening Picks set of 6](#) (1)
 - [T4 Torx Screwdriver](#) (1)
-

Step 1 — Turn of the Phone




- Turn off the device
- Remove the SIM and the memory cards.
- Remove 4x rubber corners.
- There are 6x black screws Torx T4, remove them.

Step 2 — Rear Cover Removal



- Use a plastic tool and separate the rear bezel.

 Be careful for the side buttons.

To reassemble your device, follow these instructions in reverse order.