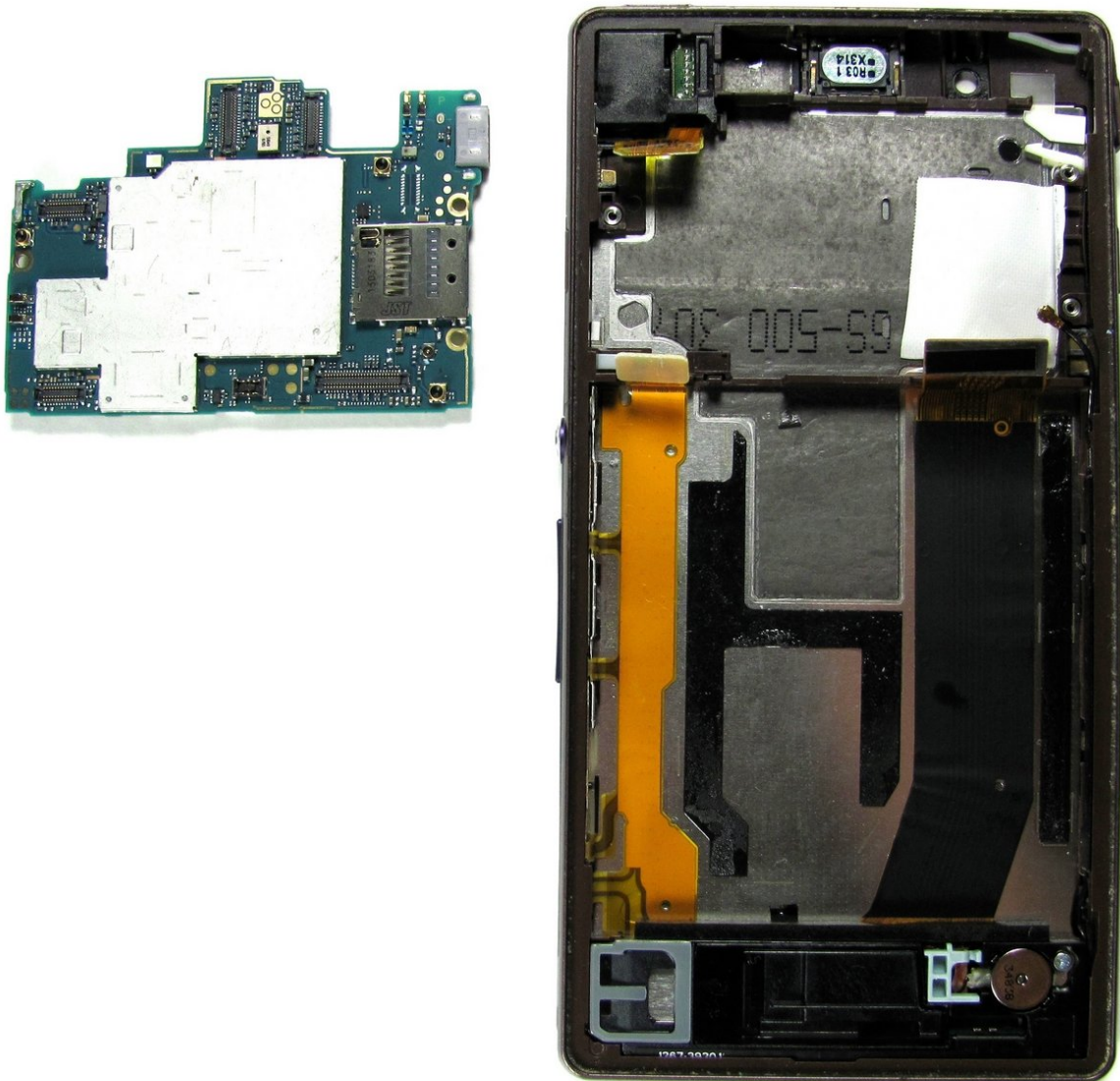




Sony Xperia L2 LTE Motherboard Replacement

If you need to replace the motherboard on your Sony Xperia L2 LTE our guide is here to assist you.

Written By: Mikayla Wyatt



INTRODUCTION

This guide will take you step by step through the process of replacing your Sony Xperia L2 motherboard. This guide will help those who have a inoperable or faulty motherboard to provide a fully functioning motherboard.




TOOLS:

- [T4 Torx Screwdriver](#) (1)
 - [iFixit Opening Tools](#) (1)
-

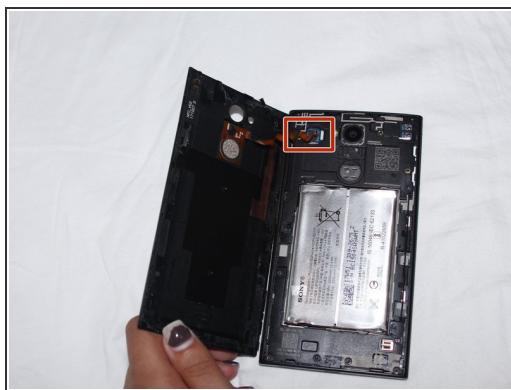
Step 1 — Battery




 Before disassembling the battery, power off your Sony Xperia L2 LTE.

- Remove SIM card tray.

Step 2



- Use the plastic opening tool to pry the back case of the phone off.

 The fingerprint sensor is connected to the motherboard.

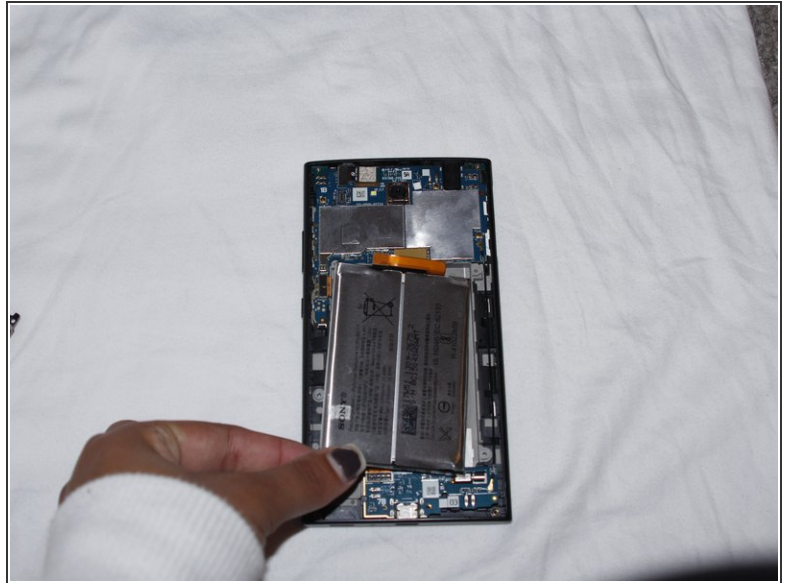
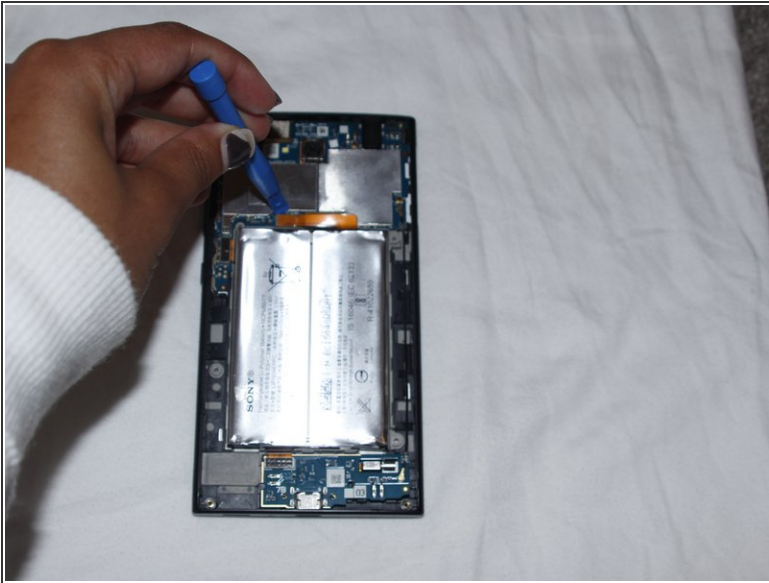
- Disconnect the fingerprint sensor.

Step 3



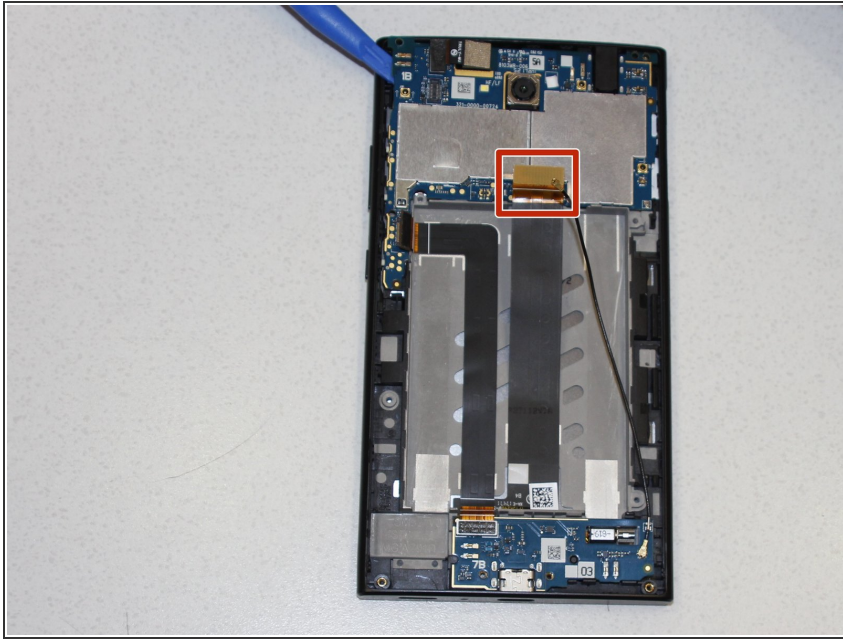
- Unscrew all 10 screws from the top and bottom portion of the phone using a T4 Torx screwdriver.
- Use the plastic opening tool to remove the unscrewed top and bottom portion of the phone.

Step 4



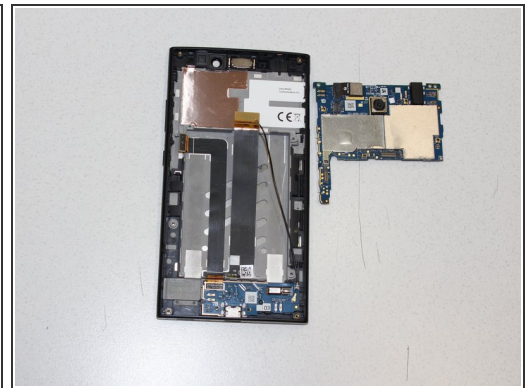
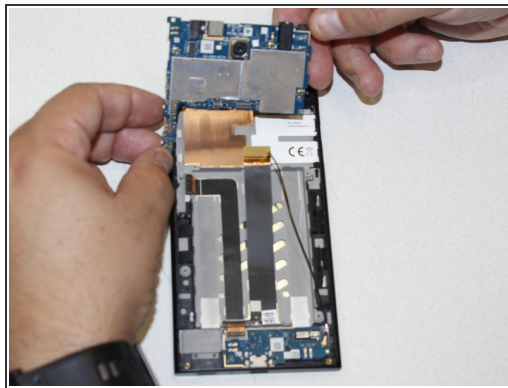
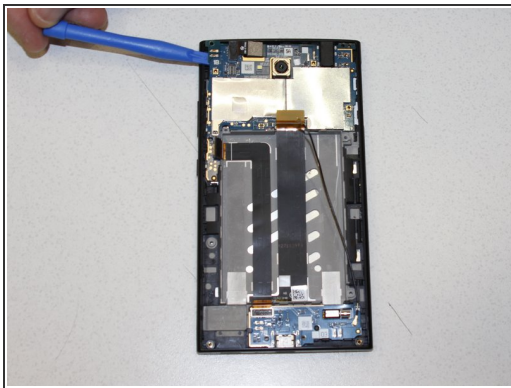
- Disconnect the battery cable from the motherboard.
 - Pry up the battery and remove it from the device.
- i** Battery may have adhesive that needs to be removed prior to removing the battery.
- !** Be careful not to jab the battery with any sharp tools. A punctured battery may leak dangerous chemicals or catch fire.

Step 5 — Motherboard



- Unclip circuit connectors from phone to motherboard.

Step 6



- Use blue plastic opening tool to pry off the motherboard.

To reassemble your device, follow these instructions in reverse order.