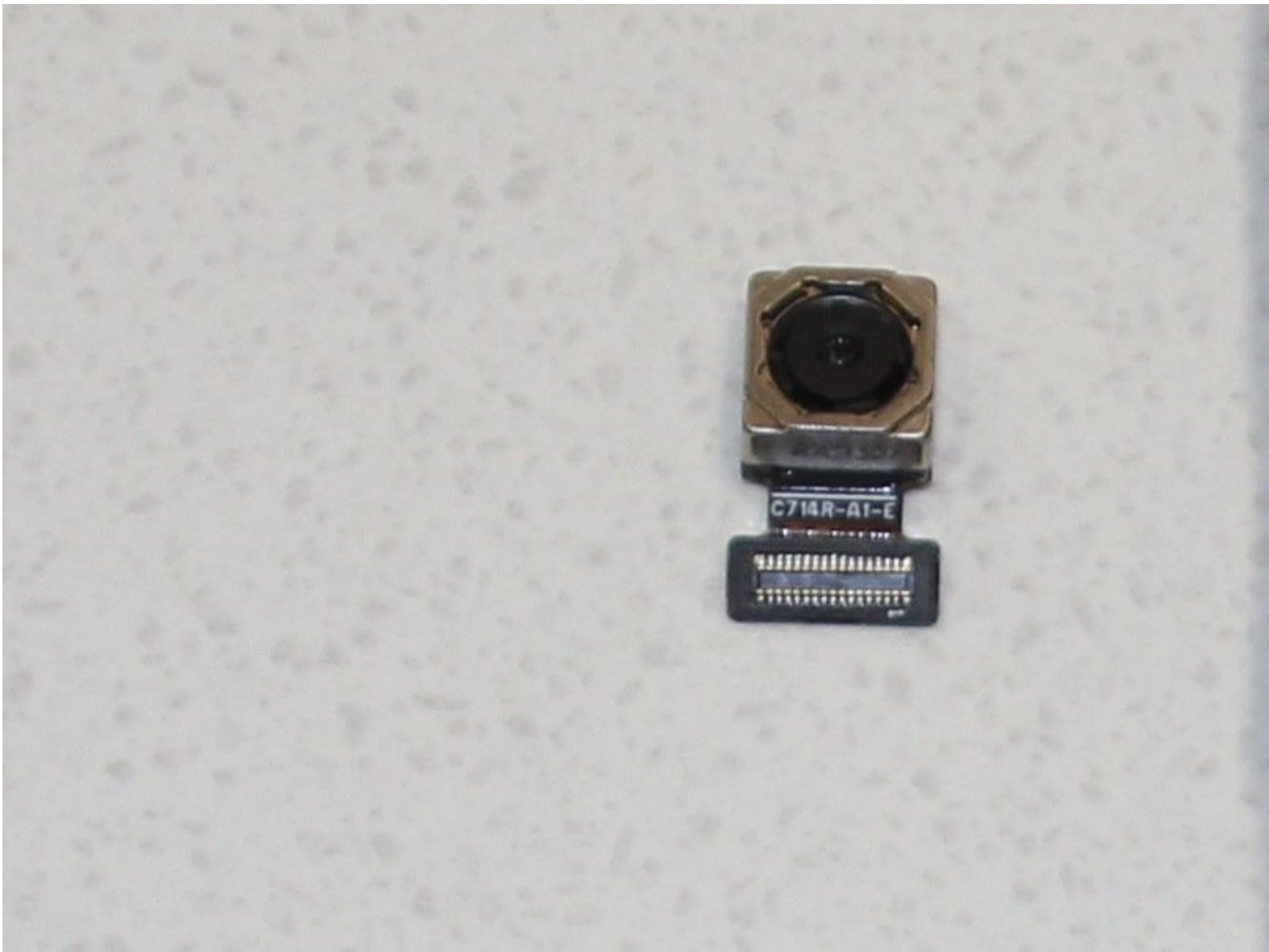




# Sony Xperia L2 LTE Rear Camera Replacement

If the rear camera for your Sony Xperia L2 LTE needs to be replaced our guide is here to assist you.

Written By: Mikayla Wyatt



# INTRODUCTION

This guide will take you step by step through the process of replacing your Sony Xperia L2 rear camera. This guide will help with an inoperable or faulty rear camera to provide a fully operable rear camera.



## TOOLS:

- [T4 Torx Screwdriver](#) (1)
  - [iFixit Opening Tools](#) (1)
-

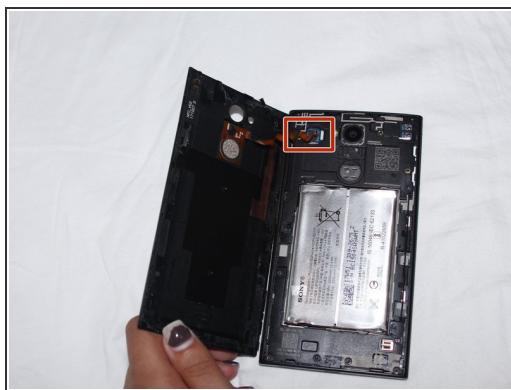
## Step 1 — Battery



⚠ Before disassembling the battery, power off your Sony Xperia L2 LTE.

- Remove SIM card tray.

## Step 2



- Use the plastic opening tool to pry the back case of the phone off.

⚠ The fingerprint sensor is connected to the motherboard.

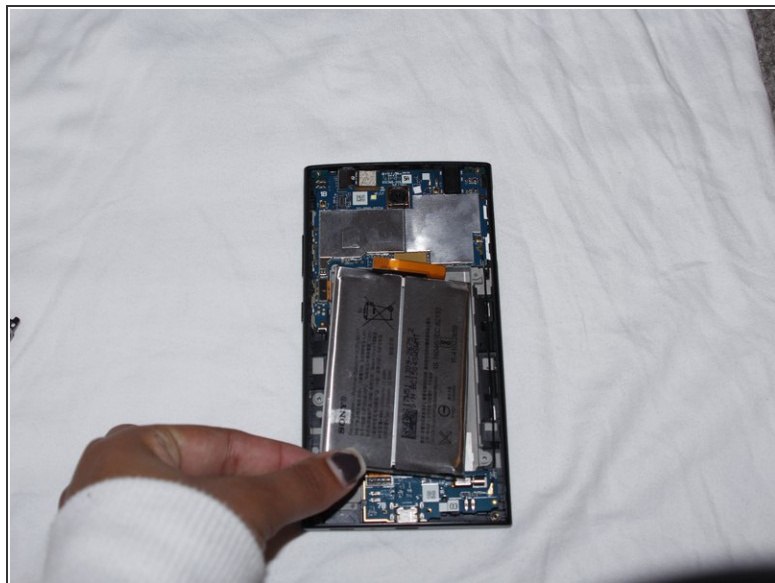
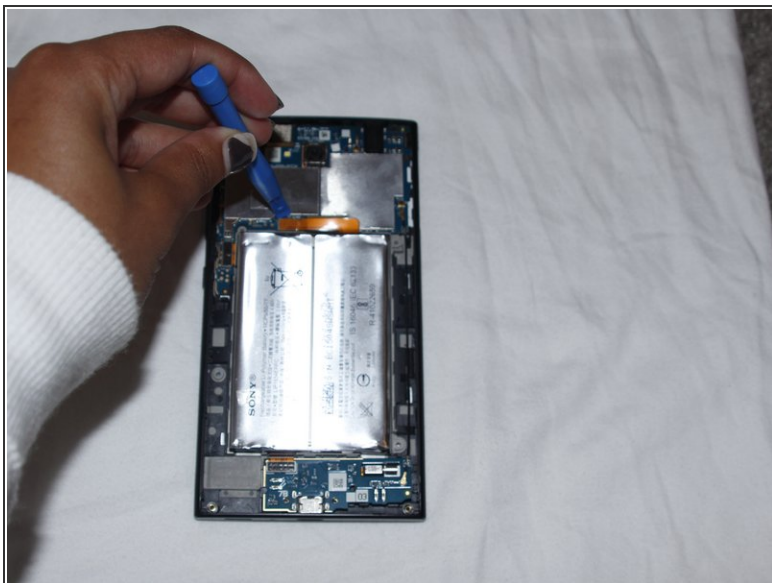
- Disconnect the fingerprint sensor.

## Step 3



- Unscrew all 10 screws from the top and bottom portion of the phone using a T4 Torx screwdriver.
- Use the plastic opening tool to remove the unscrewed top and bottom portion of the phone.

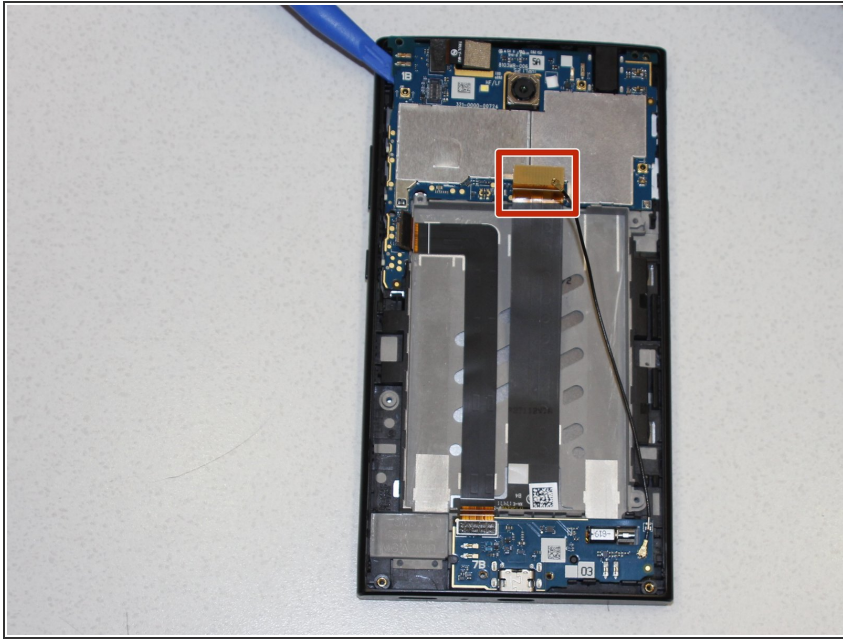
## Step 4



- Disconnect the battery cable from the motherboard.
  - Pry up the battery and remove it from the device.
- i** Battery may have adhesive that needs to be removed prior to removing the battery.
- !** Be careful not to jab the battery with any sharp tools. A punctured battery may leak dangerous chemicals or catch fire.

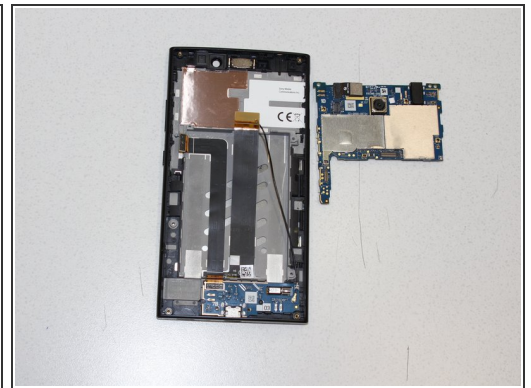
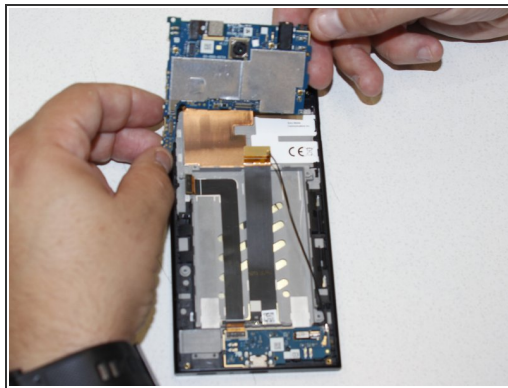
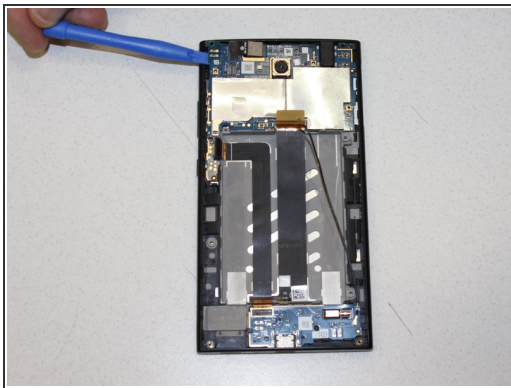


## Step 5 — Motherboard



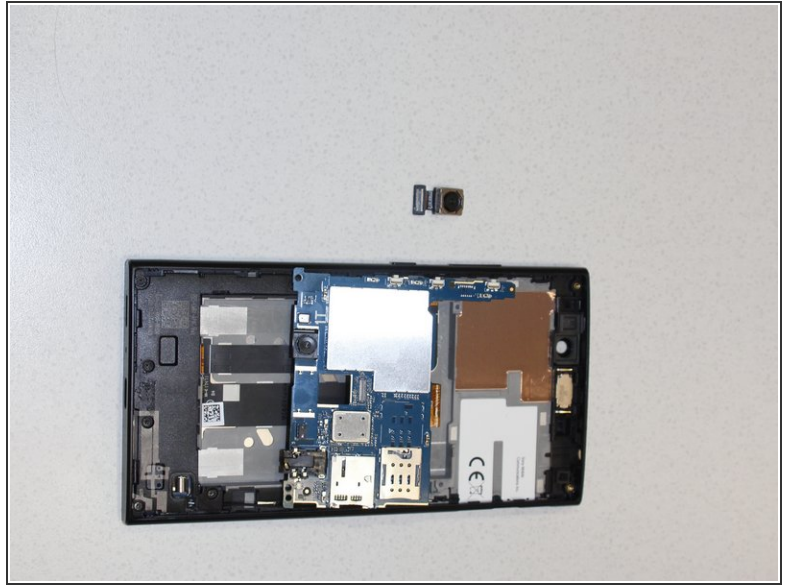
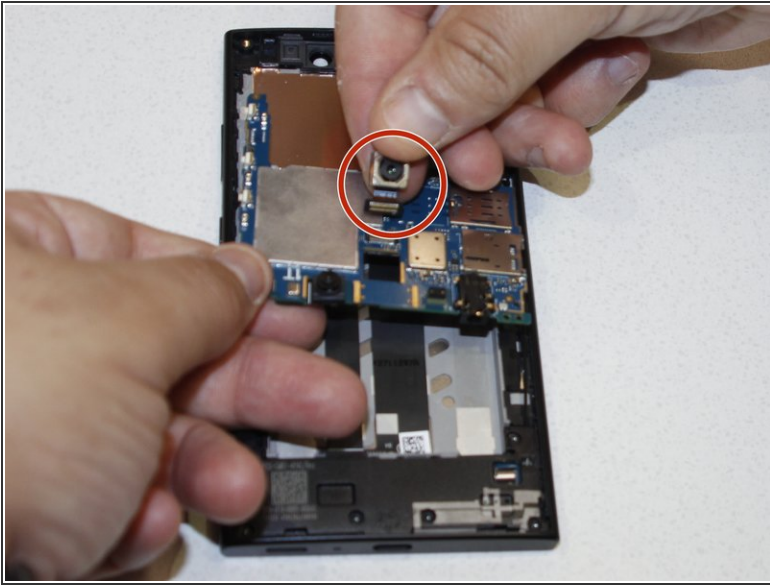
- Unclip circuit connectors from phone to motherboard.

## Step 6



- Use blue plastic opening tool to pry off the motherboard.

## Step 7 — Rear Camera



- Detach the rear camera from motherboard and remove it from the device.

To reassemble your device, follow these instructions in reverse order.