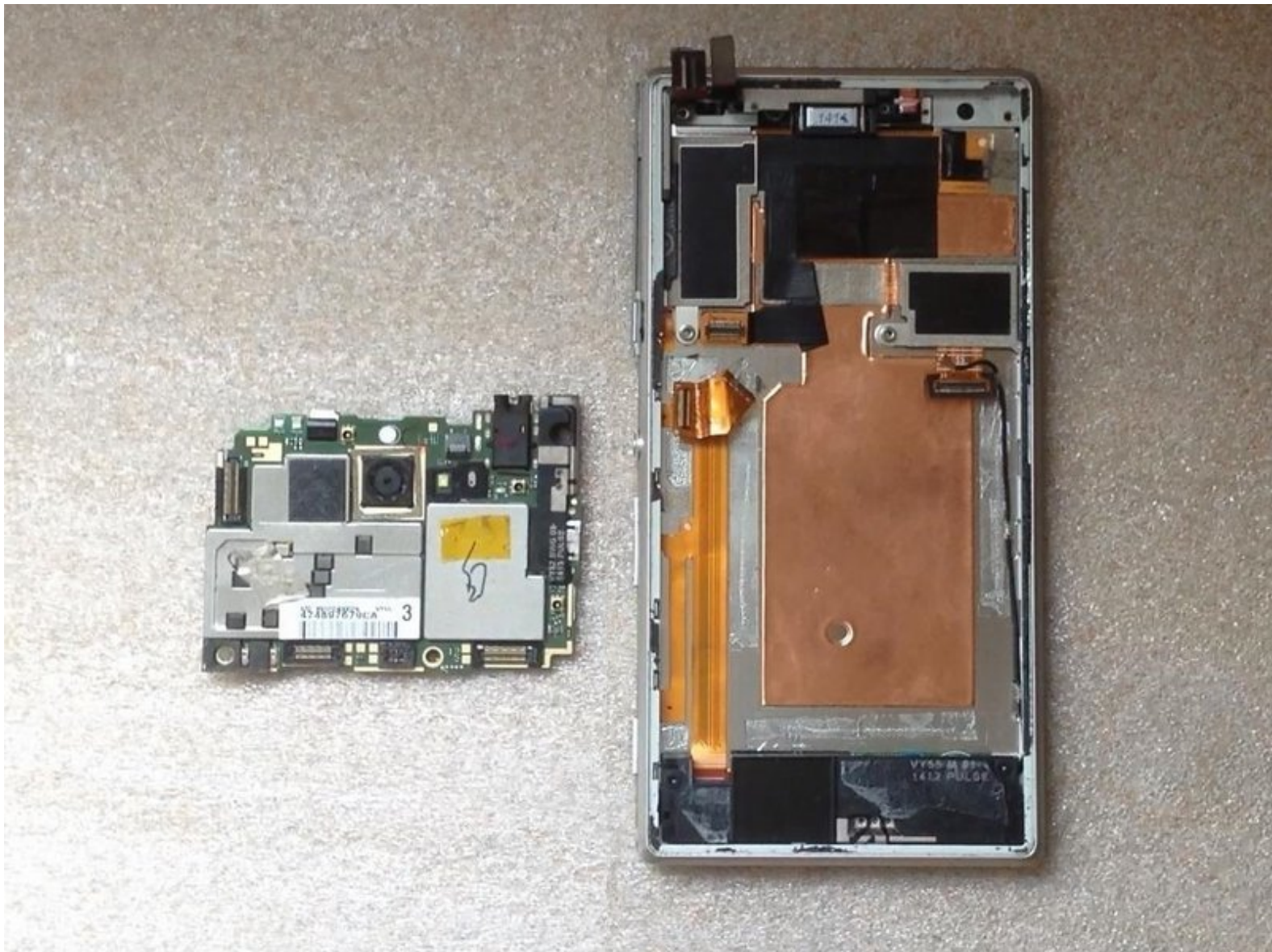




Sony Xperia M2 Logic Board Replacement

Sony Xperia M2 Logic Board Replacement

Written By: ZFix



INTRODUCTION

For this model ,removing the Logic board is very difficult operation!!!! If you do something wrong, you may damage the board.

[Please SUBSCRIBE to my channel ツ](#)

[video: https://www.youtube.com/watch?v=TpZRy6rl_hc]




TOOLS:

- [iFixit Opening Tools](#) (1)
- [Suction Handle](#) (1)
- [Spudger](#) (1)
- [Phillips #0 Screwdriver](#) (1)

Step 1 — Rear Cover



- Warm the Back Cover. You can use a hairdryer.

 Be careful, the Cover is plastic.

- Use a small suction cup and plastic tools for separating the Rear panel.
- Before installing the new cover, you must clean the phone from the old adhesive tape and install a new one if your spare part has come without double sided adhesive tape.

Step 2 — Battery



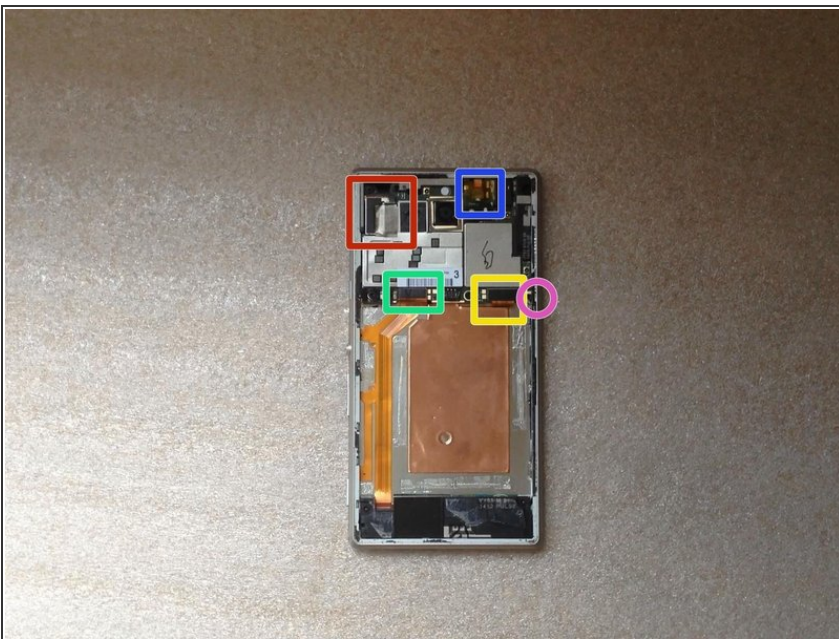
- Disconnect the Battery Cable.
- The battery is stuck to the phone frame. Use the white tape to remove it.
- Li-Polymer Battery, 2230 mAh
- Part number: LIS1551ERPC
- [Please SUBSCRIBE to my channel ツ](#)

Step 3 — Logic Board



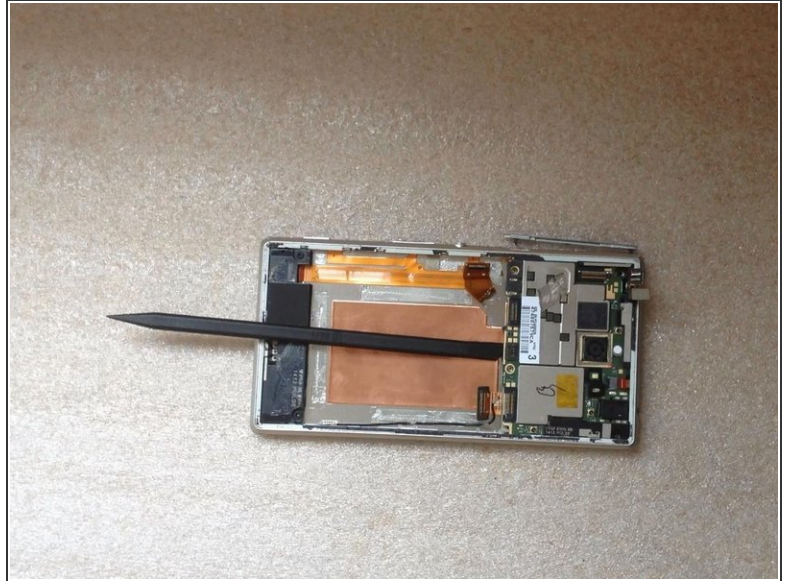
- Remove the SIM and the memory cards.
- Remove x4 T5 Torx Corner screws & x2 T5 Torx Screws on the Board

Step 4



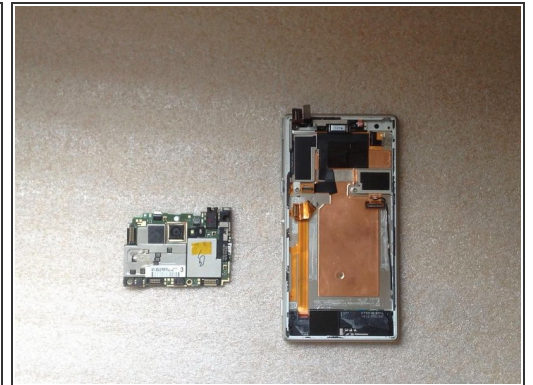
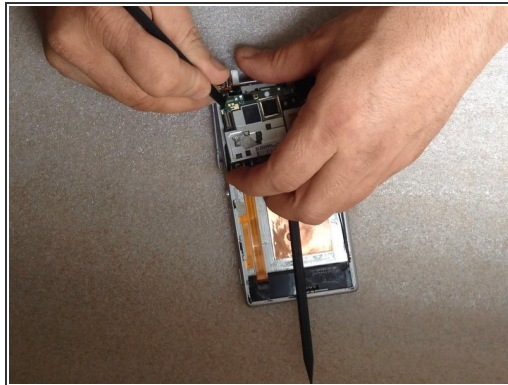
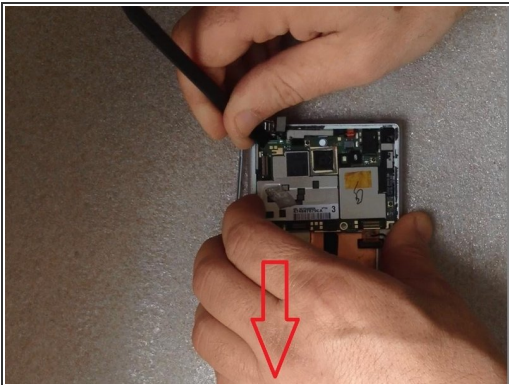
- Disconnect one by one:
 - Touchscreen flex cable
 - Proximity sensor flex cable
 - Power on, Volume buttons cable
 - SIM & Micro SD flex cable
 - Coaxial antenna cable

Step 5



- Disconnect the LCD Display flex cable. The connector is on the other side of the board, under the Power/Volume buttons flex cable connector.
- Put one plastic spudger between the Logic board and the Main frame.

Step 6



- ⚠ Step one: move aside less the left side of the board - down.
- ⚠ Step two: the left side of the Logic board must go out of the main frame.
- ⚠ **For this manipulation use only plastic tools.**

📌 [Please SUBSCRIBE to my channel ツ](#)

To reassemble your device, follow these instructions in reverse order.