



Sony Xperia TL Display Assembly Replacement

Step-by-step instructions on how to replace the display assembly on a Sony Xperia TL.

Written By: Adam Giniger



INTRODUCTION

I will teach the guide reader how to access this piece and to replace it, it must be purchased.



TOOLS:

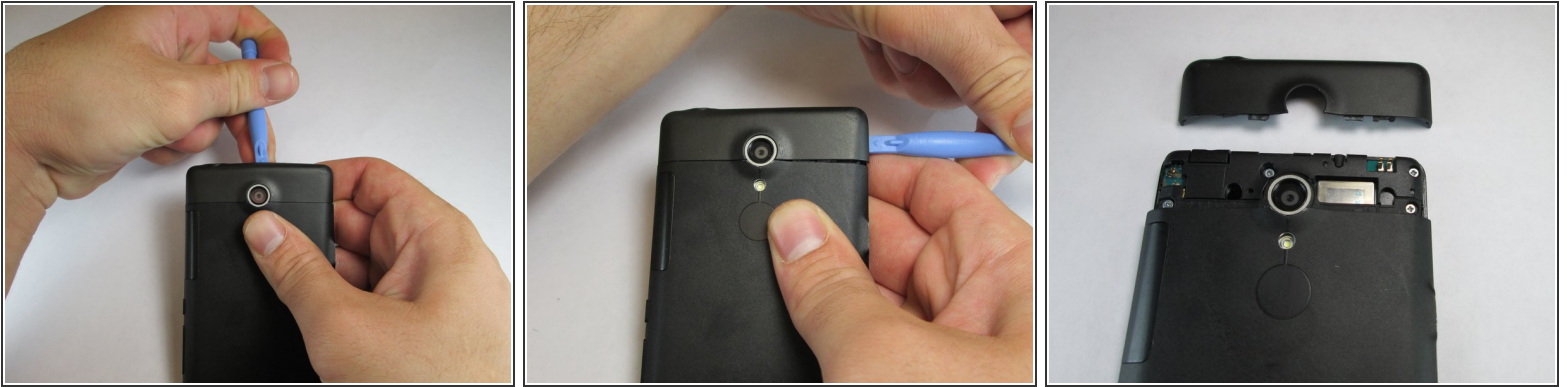
- [Phillips #00 Screwdriver](#) (1)
- [iFixit Opening Tools](#) (1)



PARTS:

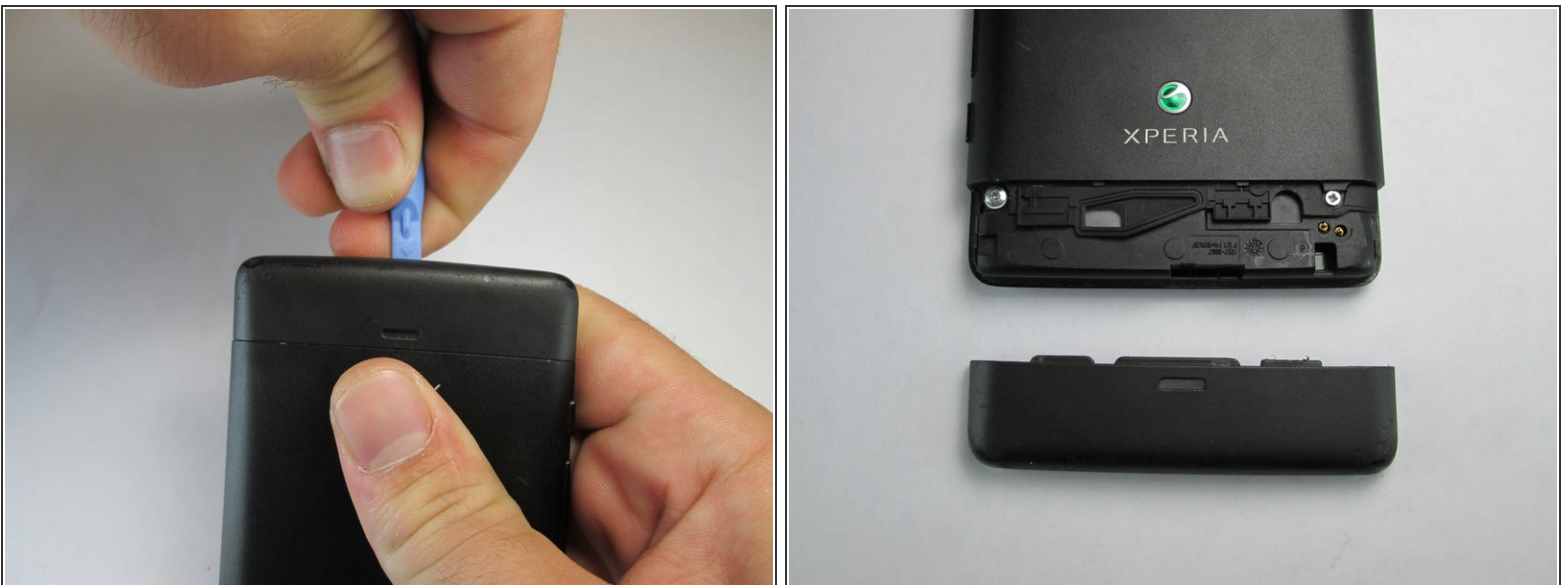
- [Sony Xperia TL Screen](#) (1)

Step 1 — Remove Top Plastic Section



- Use the plastic opening tool to pry the top plastic section off.

Step 2 — Remove Bottom Plastic Section



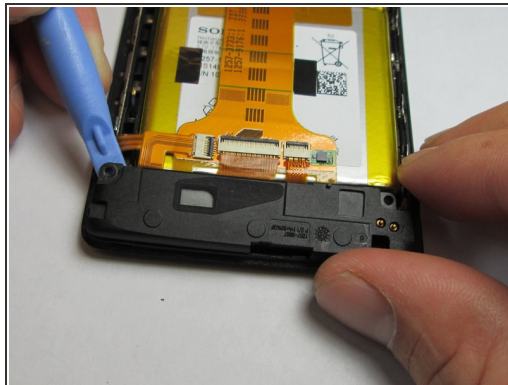
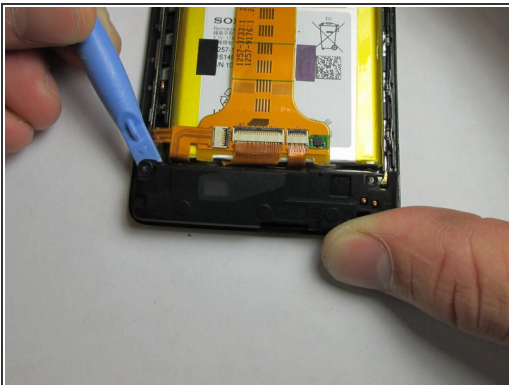
- Use the plastic opening tool to pry the bottom plastic section off.

Step 3 — Unscrewing the Back Off



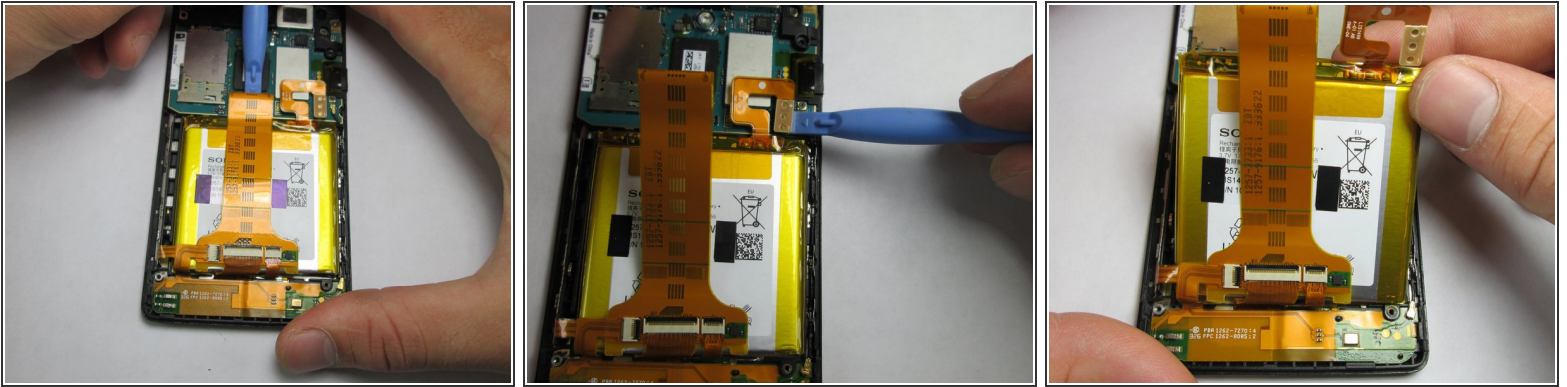
- Remove the four 5mm screws.
- Use the plastic opening tool to pry off the back.

Step 4 — Loud Speaker



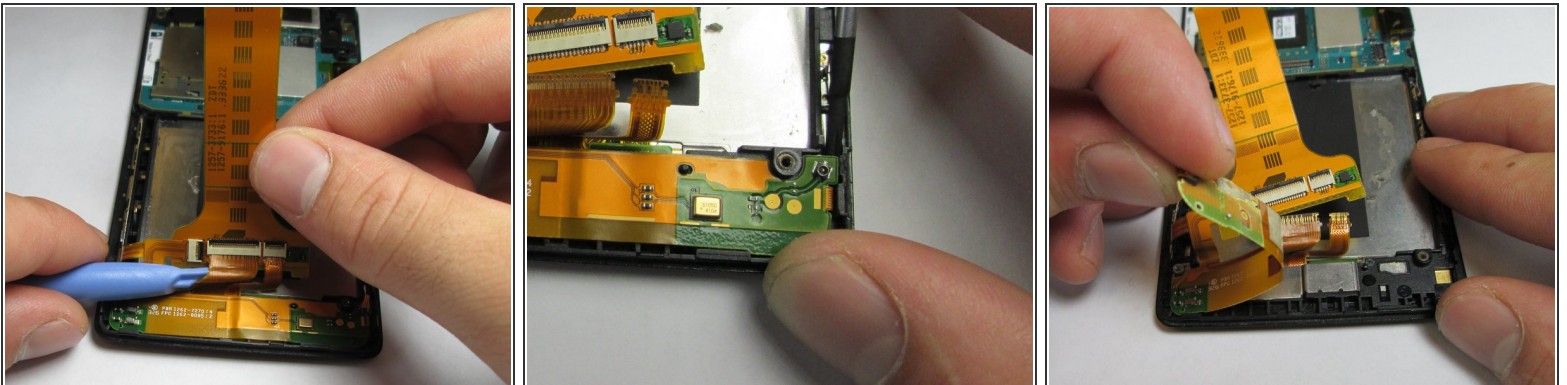
- Use the plastic opening tool to remove the loud speaker module.

Step 5 — Battery



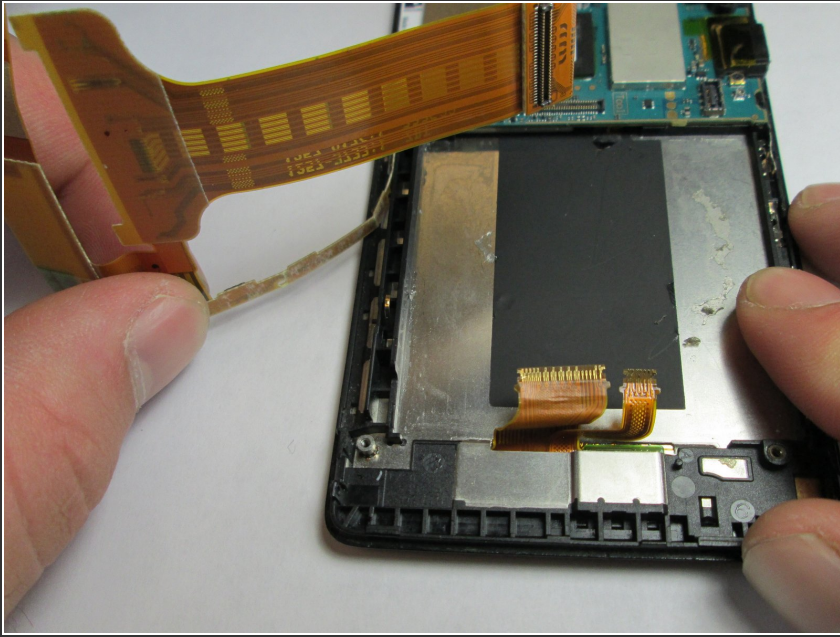
- Use the plastic opening tool to detach the ribbon running across the battery.
- Use the plastic opening tool to detach the ribbon connecting the battery to the motherboard.

Step 6 — Battery Harness



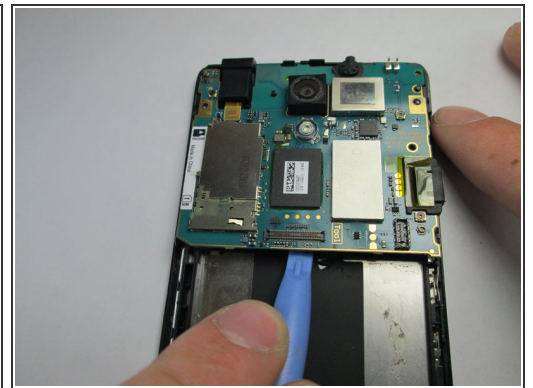
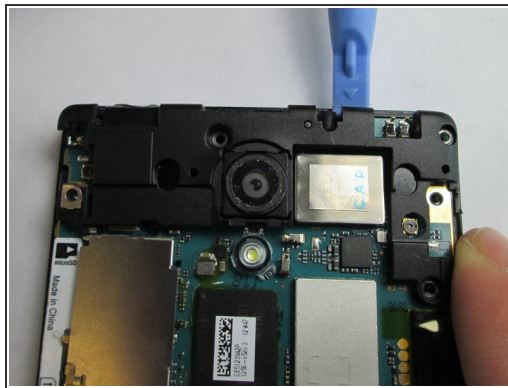
- Unhook the 2 connections between the harness and phone shell.
- Using the plastic opening tool, pry the harness up and remove it.
- ⓘ There is an adhesive on the bottom half of the battery harness.

Step 7



- The final step is taking the entire harness off of the phone.

Step 8 — Motherboard



- Use the Phillips #00 to remove the 3 5mm screws.
- Lift the plastic cover off.
- Use the plastic opening tool to pry the motherboard out of the phone shell.

Step 9 — Ear Speaker



- Use the plastic opening tool to detach the ear piece speaker.
- ⓘ Avoid majorly bending the tiny metal hooks holding the ear piece in.

Step 10 — Display Assembly



- Once every single piece is removed from the main screen/digitizer this will be the only remaining piece.

Nothing else can be removed. If you need to replace your screen this entire piece must be replaced.

To reassemble your device, follow these instructions in reverse order.