



# Sony Xperia XA Ultra Motherboard removal

This guide will show the step-by-step process to remove the motherboard of the Sony Xperia XA Ultra.

Written By: Forrest Lee





## INTRODUCTION

This guide is for removing the motherboard of the Xperia XA Ultra. To complete this disassembly, you will need a T3 and T5 Torx screwdriver as well as a plastic spudger to pry open certain parts of the phone. A hairdryer or any other device that can supply heat is recommended to loosen the glue holding the components together, although it is possible to complete the replacement without.



### TOOLS:

- [Spudger](#) (1)
- [Metal Spudger](#) (1)
- [T5 Torx Screwdriver](#) (1)
- [T3 Torx Screwdriver](#) (1)
- [iFixit Opening Tools](#) (1)



### PARTS:

- [Sony Xperia XA Ultra battery](#) (1)  
*Model number: f3213*



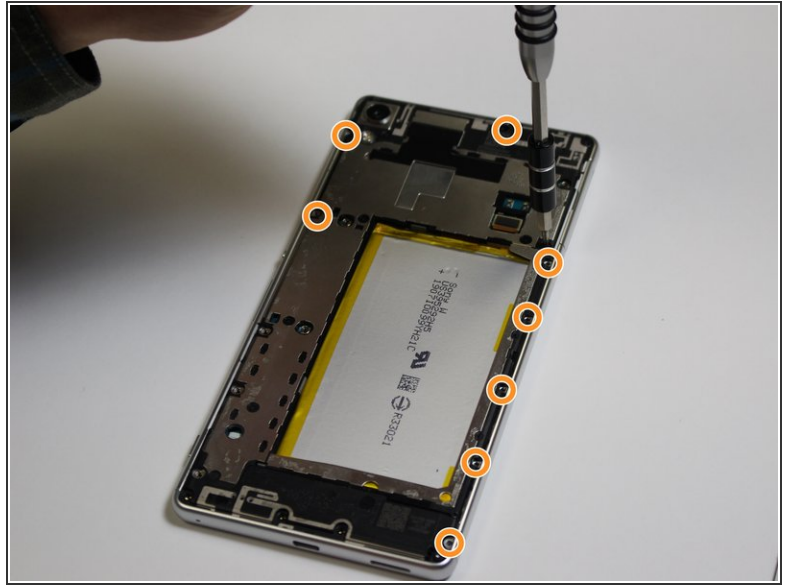
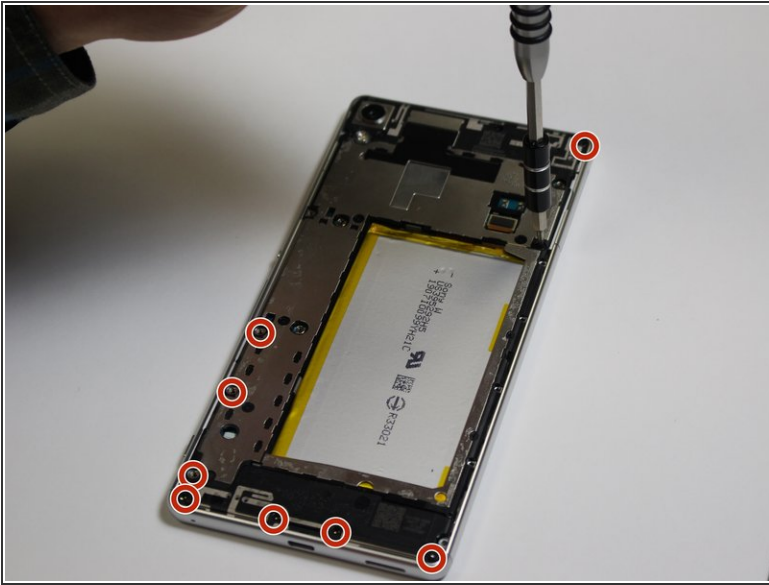
## Step 1 — Motherboard



- Carefully remove the back panel of the phone with a plastic spudger, or other flat and thin wedge tool. Work your way around the perimeter of the case, loosening and prying gently, until there is sufficient distance between the panel and phone.



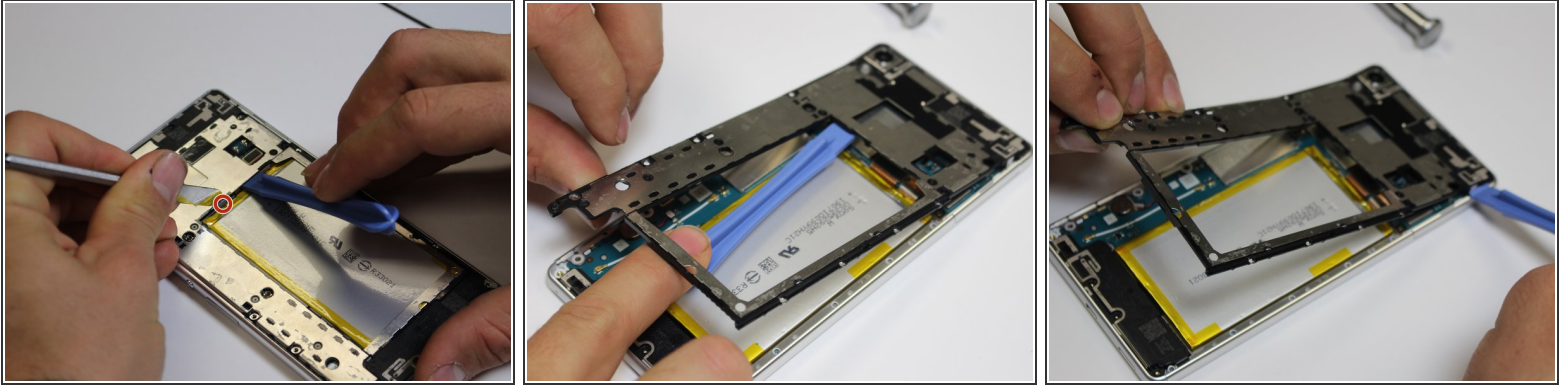
## Step 2



- Remove all 9 black 4mm T5 screws.
- Remove all 8 silver 3mm T3 screws.
- Make sure to carefully place each screw in a secure location to avoid losing any.



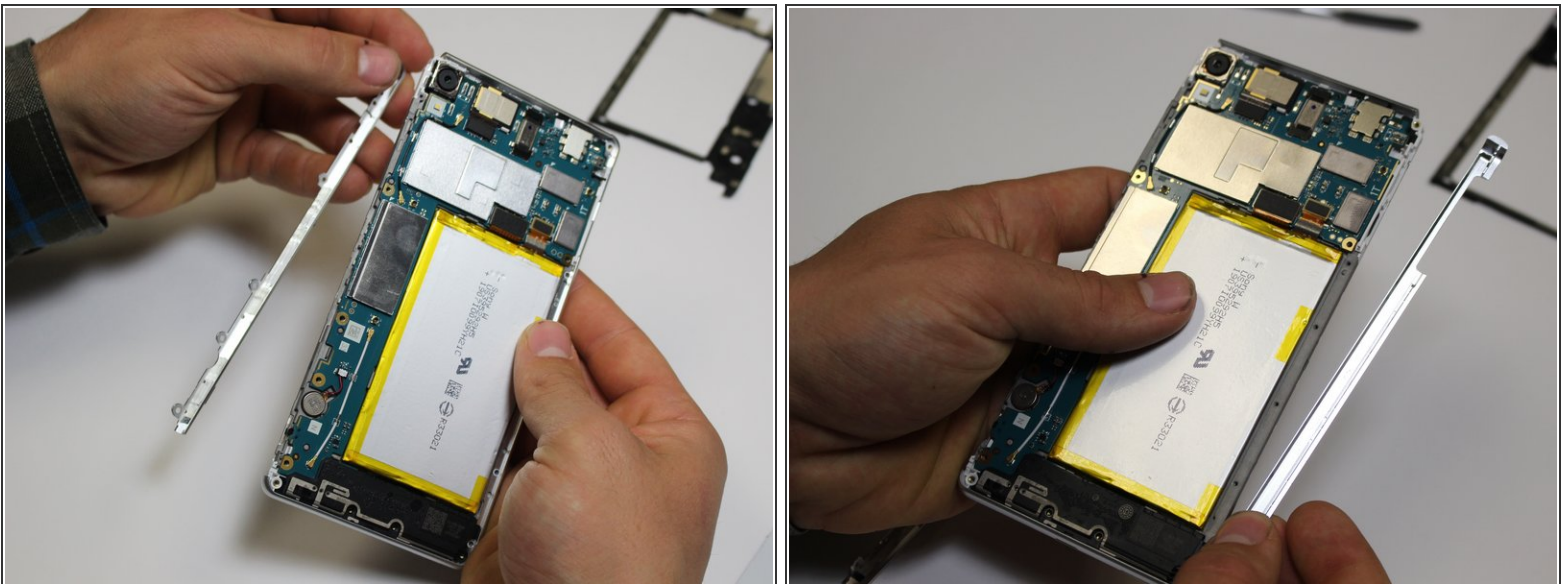
### Step 3



- Near the top of the battery (area closest to camera) press the small latch in the highlighted area, push the latch away from the metal casing with the metal spudger.
- Use the plastic opening tool to pry off the metal case. Be sure to carefully pry the casing slowly and at multiple angles and directions to insure nothing is damaged.

⚠ Be careful when prying near the top of the device. The metal casing can be easily bent.

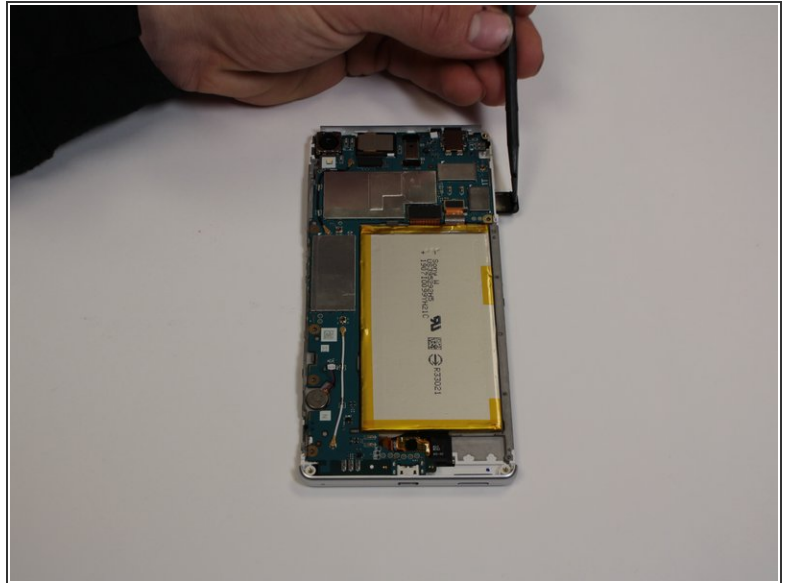
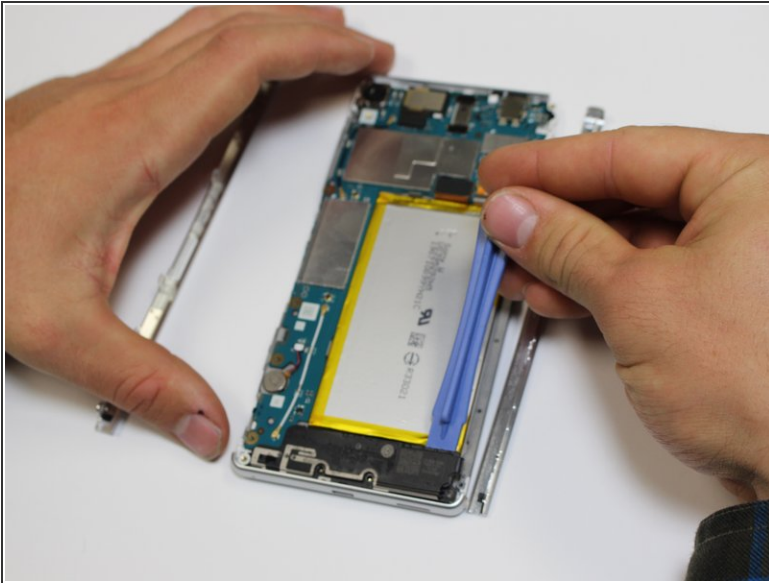
### Step 4



- Remove the side bezels from each side, and remove the sim card cover.

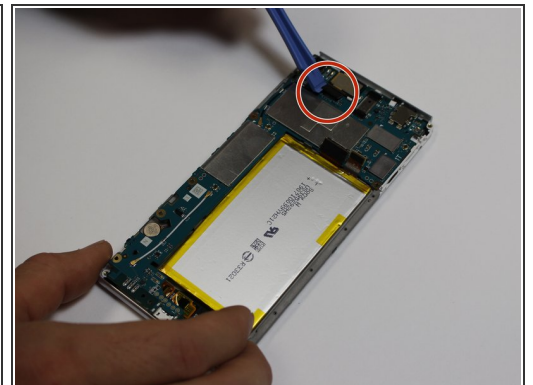


## Step 5



- Using the plastic opening tool, gently pry off the black charge port plate, located near the bottom of the phone.
- Remove the sim card from sim card slot using fingernail or small plastic spudger.

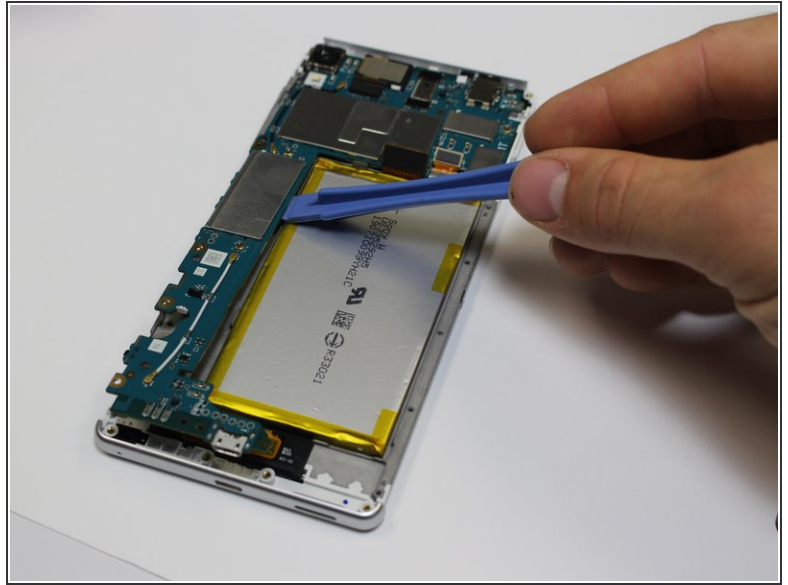
## Step 6




- Disconnect all four of the shown electrical connectors by gently prying up with the plastic opening tool.



## Step 7



- Working from bottom to top, gently pry the motherboard off of the phone .

 The camera is connected to the motherboard. Be extremely careful when removing it to avoid damage.

To reassemble your device, follow these instructions in reverse order.