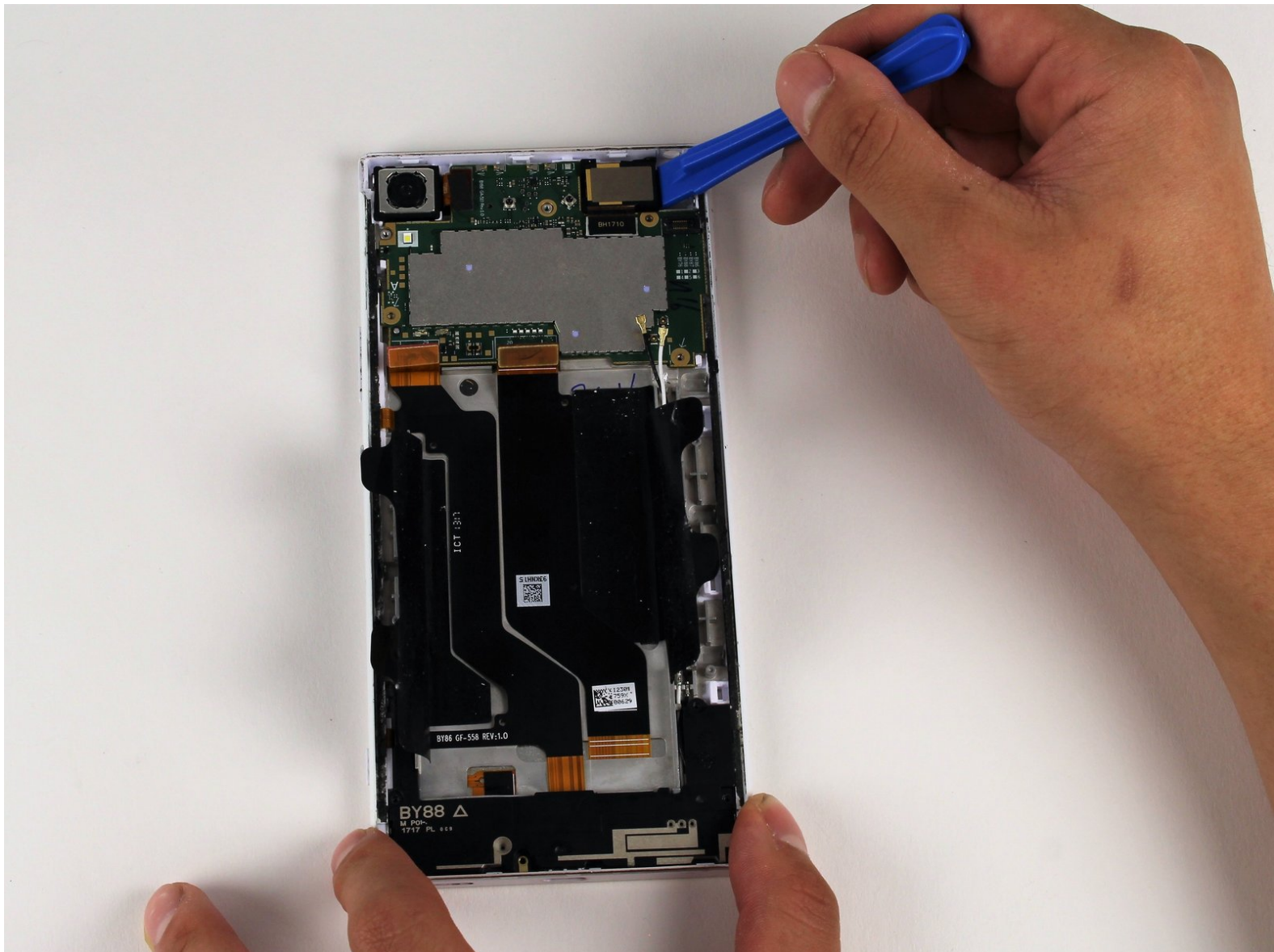




Sony Xperia XA1 Ultra Front Camera Replacement

A replacement guide for the Sony Xperia XA1 Ultra front camera.

Written By: Jacob Jung



INTRODUCTION

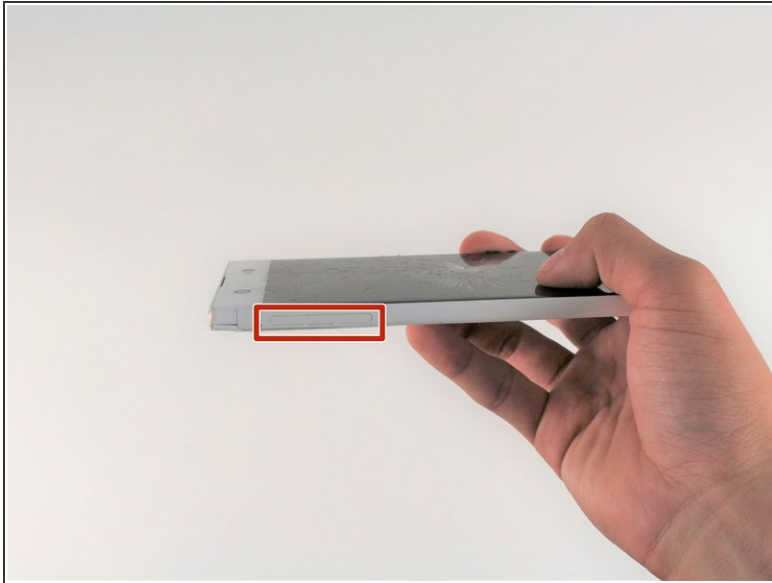
This guide will show you how to remove the front camera from your Sony Xperia XA1 Ultra. The front camera should be replaced if the camera is cracked or damaged. A heat gun or hairdryer is needed to open the back panel, which can become hot and potentially damage the phone. In addition, a T5 screwdriver is needed to remove screws.



TOOLS:

- [Heat Gun](#) (1)
- [iFixit Opening Tools](#) (1)
- [Plastic Cards](#) (1)
- [Suction Handle](#) (1)
- [T5 Torx Screwdriver](#) (1)

Step 1 — Back Assembly



- Wedge your finger under the bottom ridge of the SD card insert.
- Pull outwards with your fingers to remove the SD card from the left side of device.

Step 2



- Use a hair dryer to heat each corner of the phone.
 - Alternate heating each corner for a minute to loosen the adhesive binding the back cover to the phone.
- ⚠ Don't heat one area for too long; the phone may get damaged from overheating.

Step 3



- Press a suction cup on a heated corner of the device.
- Hold the phone down and gently lift the suction cup to create a small gap.
- ❗ You may hear crunching or popping sounds when you lift up the back cover.

Step 4



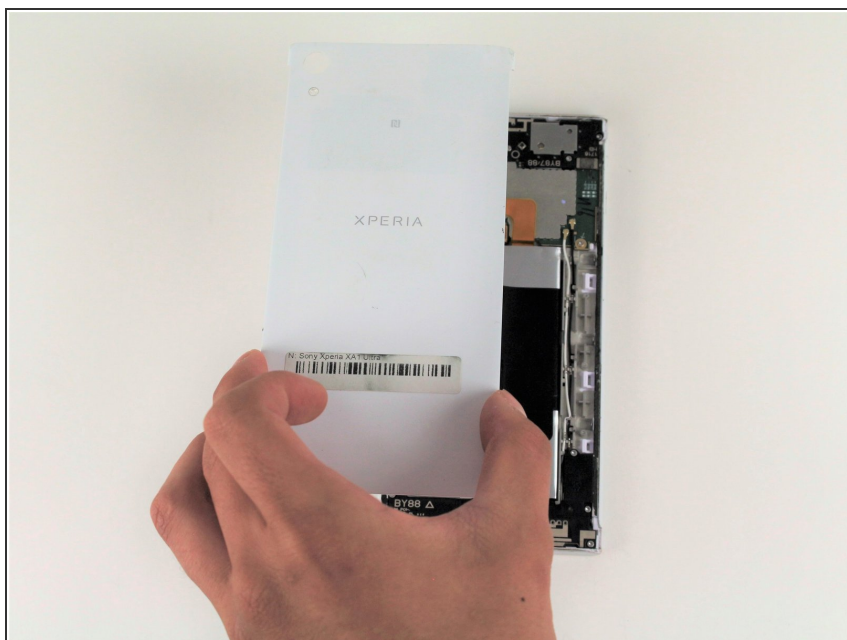
- Insert your iFixit Opening Tool in the small gap between your phone and the back cover.
- Lift up on the iFixit Opening Tool and insert your plastic card in the small gap between your phone and the back cover.

Step 5



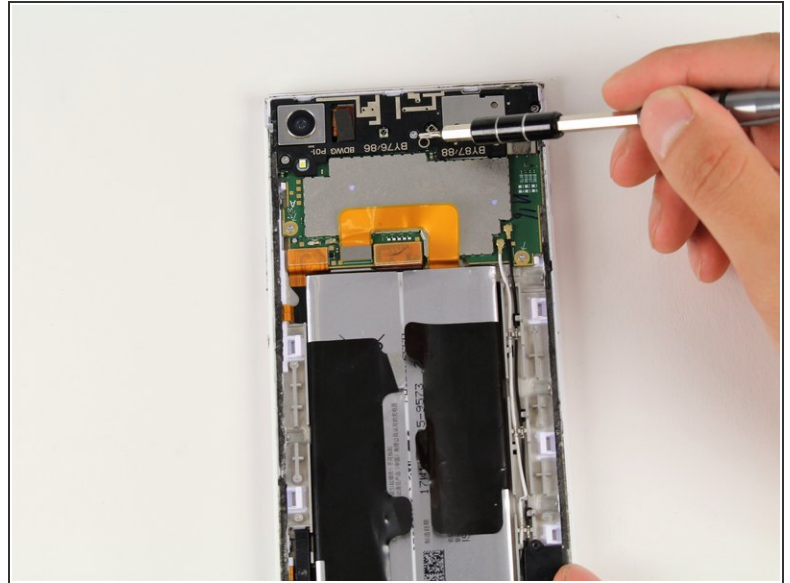
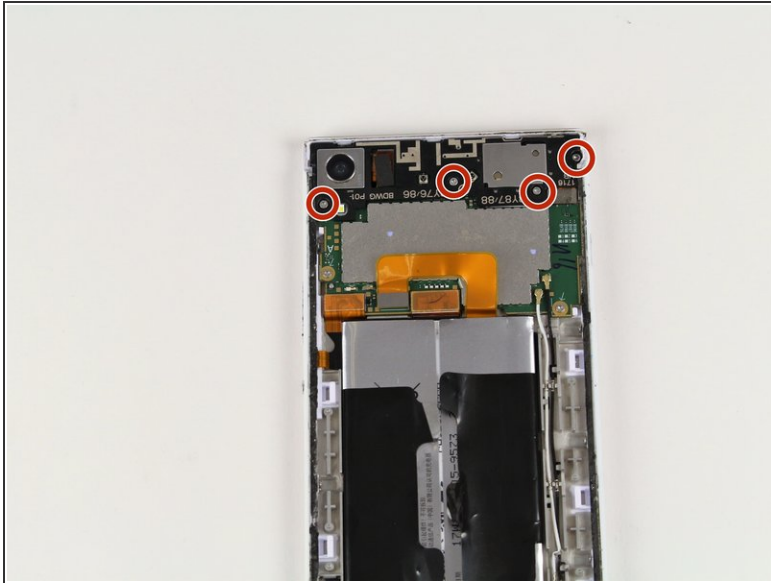
- Slide your plastic card along the side of your phone to loosen the adhesive.
- Move the card along the sides of the phone to lift all of the corners.

Step 6



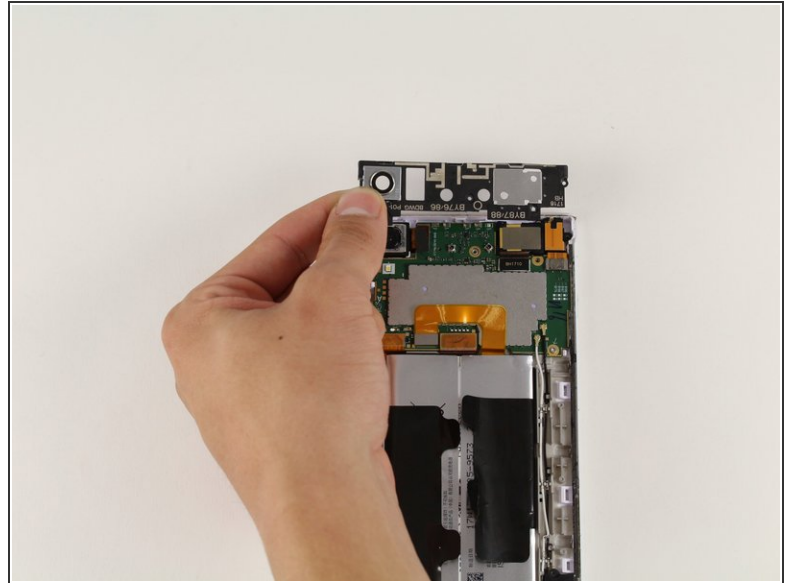
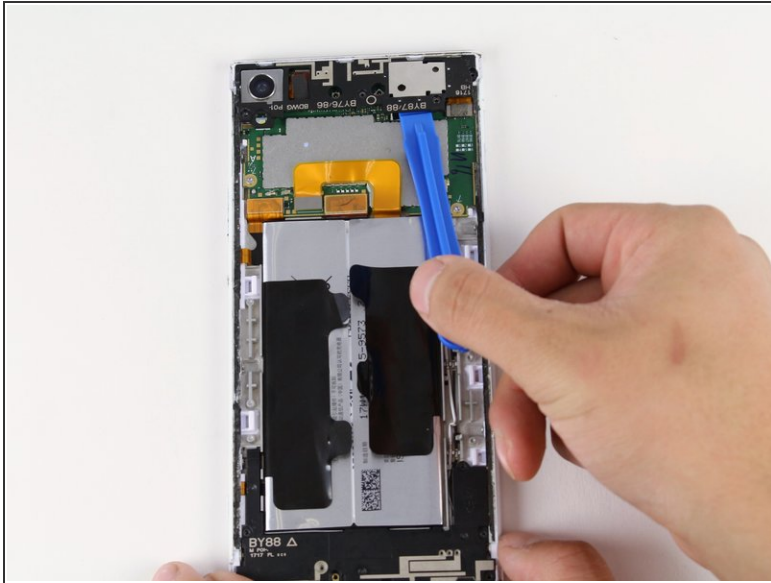
- Lift up the back cover by lifting up the sides of the phone with your hand.
- ☑ Apply a new strip of adhesive for reassembly.


Step 7 — Antenna Module



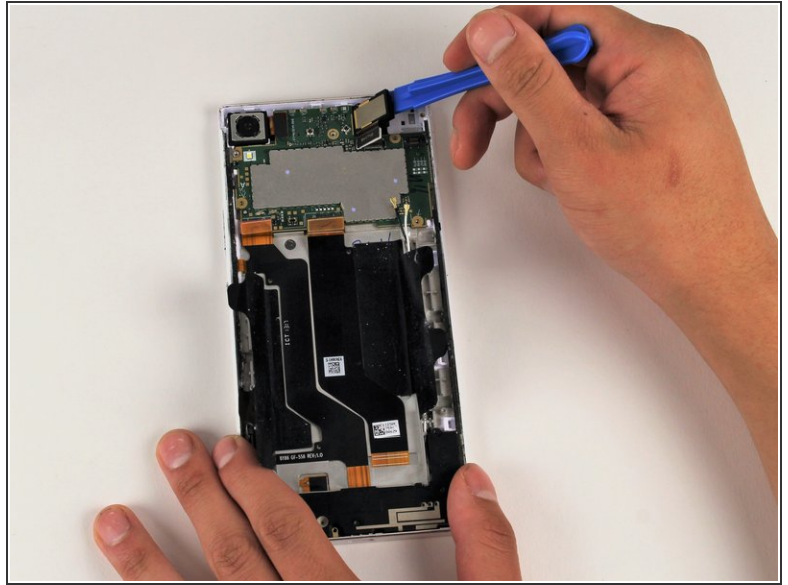
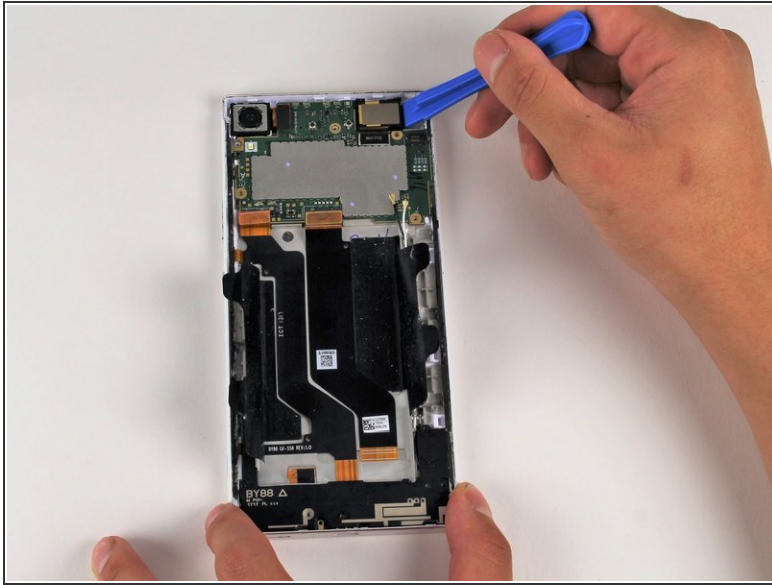
- Remove the four 4mm T5 screws on the top of the black panel securing the antenna module to the device.

Step 8



- Insert your iFixit Opening Tool underneath the antenna module.
 - Lift up gently with the iFixit Opening Tool to remove the antenna module.
-  The antenna module may be difficult to remove.

Step 9 — Front Camera



- Insert your iFixit Opening Tool underneath the front camera and gently lift up.
- Remove the front camera by lifting the front camera up with your hands.

To reassemble your device, follow these instructions in reverse order.