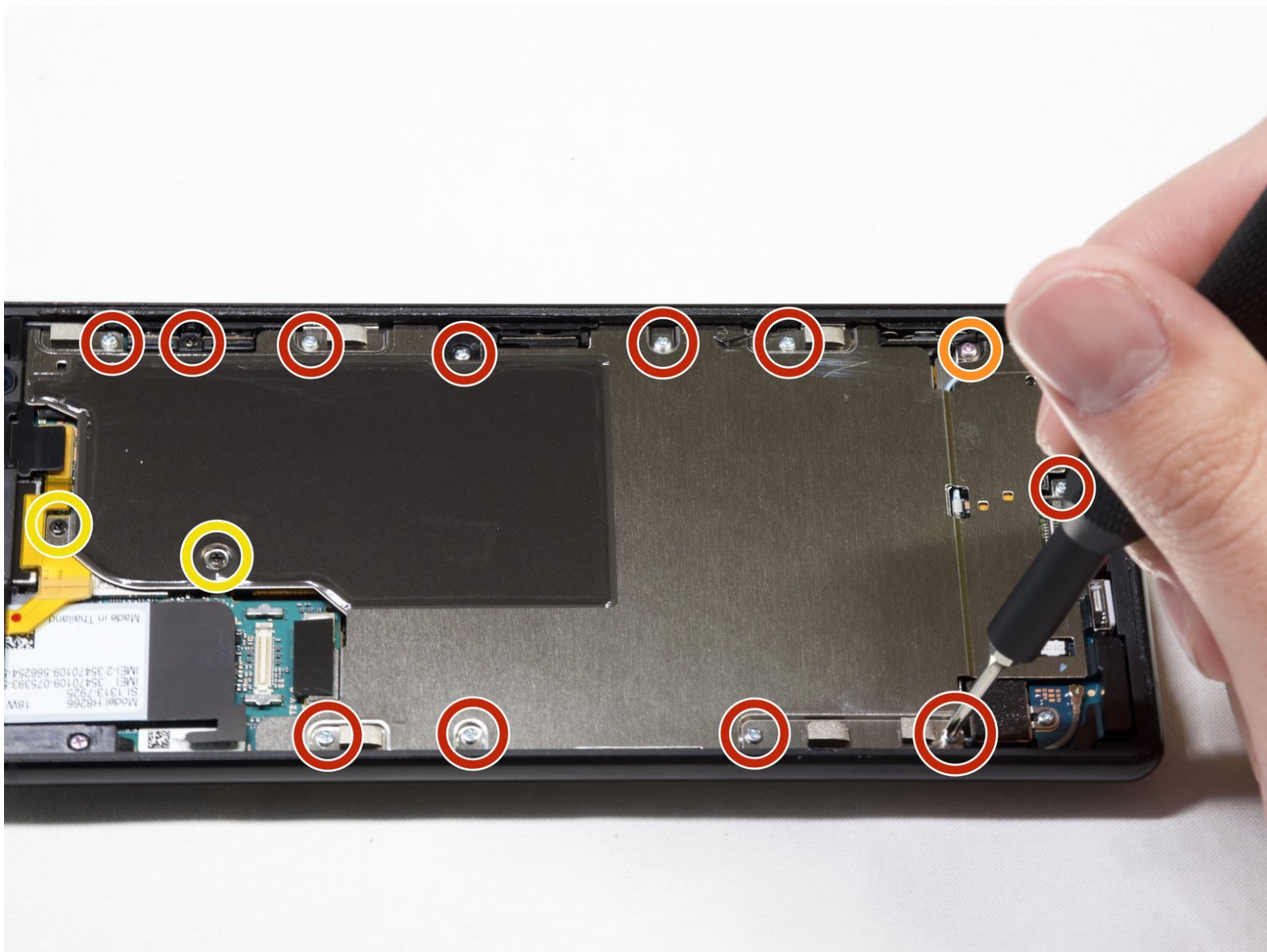




# Sony Xperia XZ2 Front Camera Replacement

This guide will explain how to replace the front camera of the Sony Xperia XZ2, model number H6266.

Written By: Chloe



## INTRODUCTION

If the front camera on your Sony Xperia XZ2 is no longer working, it may need to be replaced. To replace the front camera use this guide. For this guide you will need a hair dryer, opening picks, angled tweezers, a spudger, and a Phillips #00 screwdriver.

Replacing the front camera requires removal of the LCD screen.




### TOOLS:

- [Hair Dryer](#) (1)
  - [iFixit Opening Picks set of 6](#) (1)
  - [Tweezers - Pro/ESD/Angled](#) (1)
  - [Spudger](#) (1)
  - [Phillips #00 Screwdriver](#) (1)
-

## Step 1 — LCD Screen



- Weaken the glue that is keeping the screen in place by heating up the edges of the phone with a hair dryer or heat gun.

 The phone gets very hot and can hurt the user handling it.

## Step 2



- Scrape all the glue from the inside edges by inserting opening picks into the bottom edge of the phone and working your way around the edges.

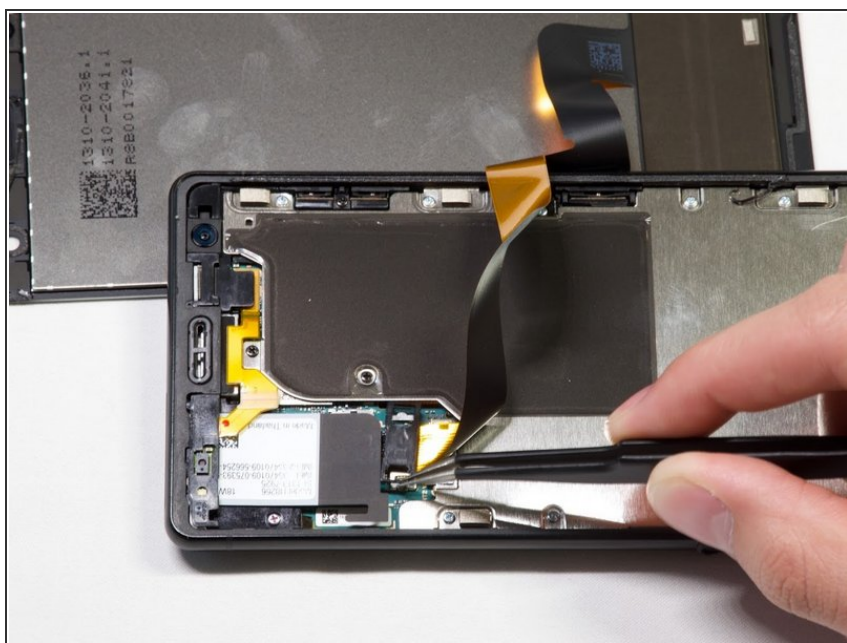
 If the glue hardens and becomes difficult to move the plastic around the edges, reheat the phone.

## Step 3



- Pry open the phone by inserting an opening pick under one of the edges and removing the screen.
- ⓘ The screen is still attached by a connector, so do not pull the pieces apart.

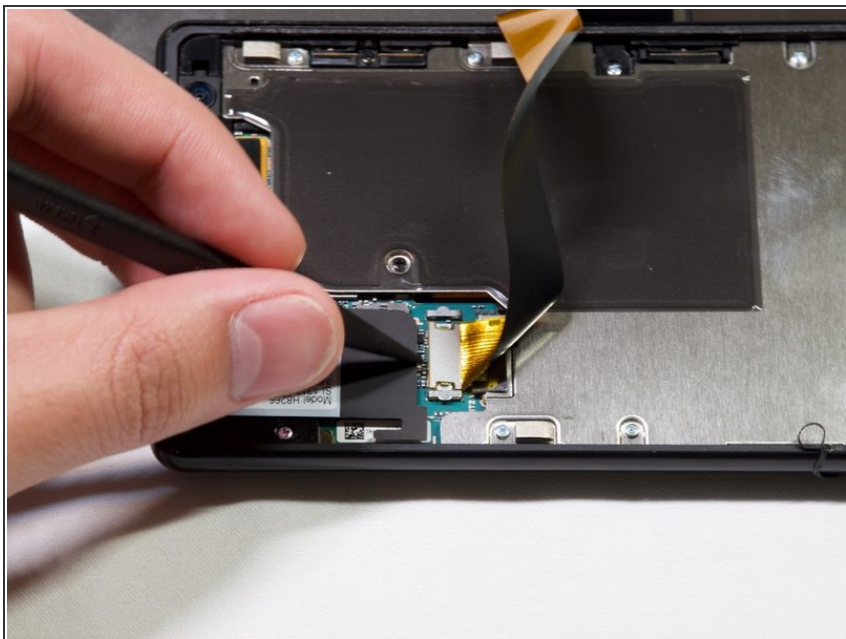
## Step 4



- Remove the bracket covering the connector by grabbing one side of the bracket with angled tweezers and gently pulling it off.

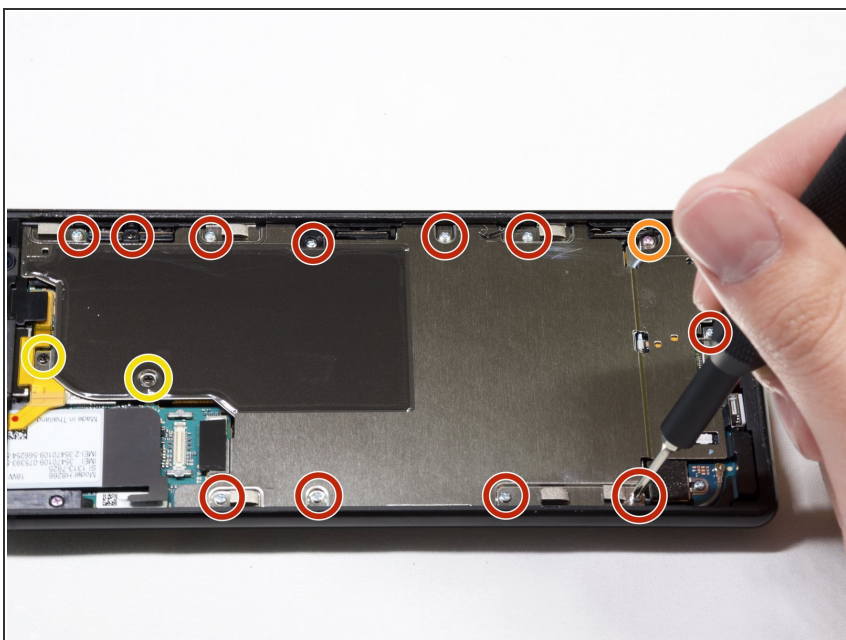


## Step 5



- Gently remove the connector by using a spudger to pop it off.

## Step 6 — Front Camera



- Take out the twelve 3.5mm screws using the Phillips #00 screwdriver.
  - Remove the one 3 mm Phillips #00 screws.
  - Remove the two 1mm Phillips #00 screws.
- ⓘ Fifteen screws should be removed in total in this step. (Not all the screws are visible in the picture.)

## Step 7



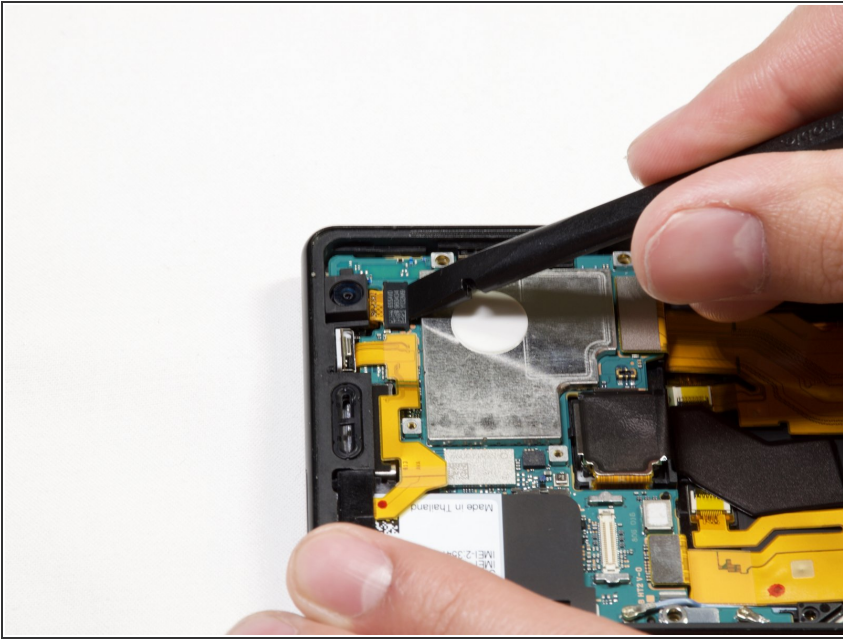
- Lift the metal screen shield out of the phone.

## Step 8



- Use the spudger to pop off the plastic protector.

## Step 9



- Gently pry up the battery flex connector using the spudger.

To reassemble your device, follow these instructions in reverse order.