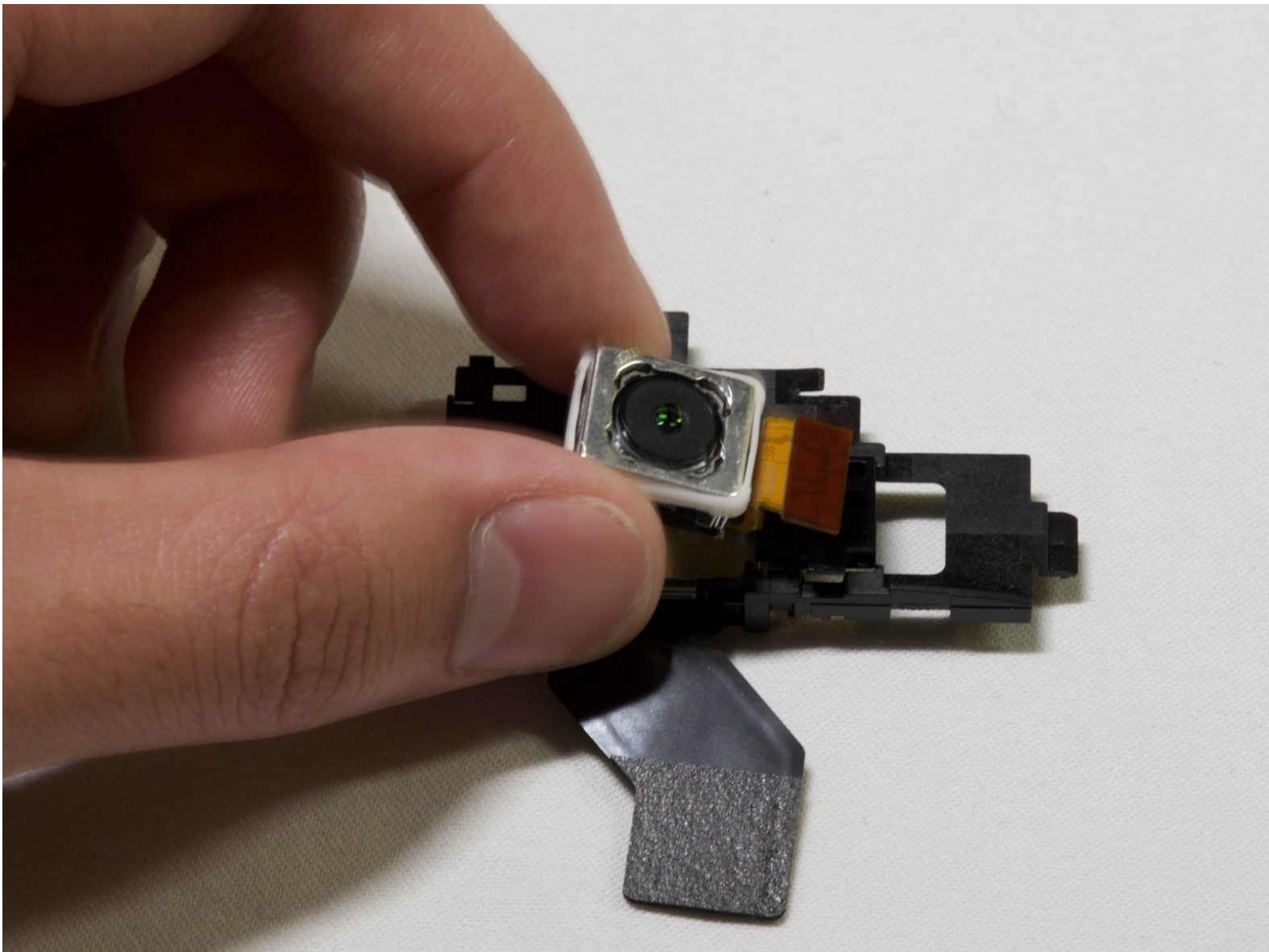




Sony Xperia XZ2 Rear Camera Replacement

This guide will explain how to replace the rear camera of the Sony Xperia XZ2, model number H6266.

Written By: Dan Nguyen



INTRODUCTION

If the rear camera of your phone is cracked or not functioning correctly, it may be time for a replacement. This guide will walk you through replacing the rear camera on your Sony Xperia XZ2.

For this guide you will need a hair dryer, opening picks, angled tweezers, a spudger, and a Phillips #00 screwdriver.



TOOLS:

- [Hair Dryer](#) (1)
 - [iFixit Opening Picks set of 6](#) (1)
 - [Tweezers - Pro/ESD/Angled](#) (1)
 - [Spudger](#) (1)
 - [Phillips #00 Screwdriver](#) (1)
-

Step 1 — LCD Screen



- Weaken the glue that is keeping the screen in place by heating up the edges of the phone with a hair dryer or heat gun.

 The phone gets very hot and can hurt the user handling it.

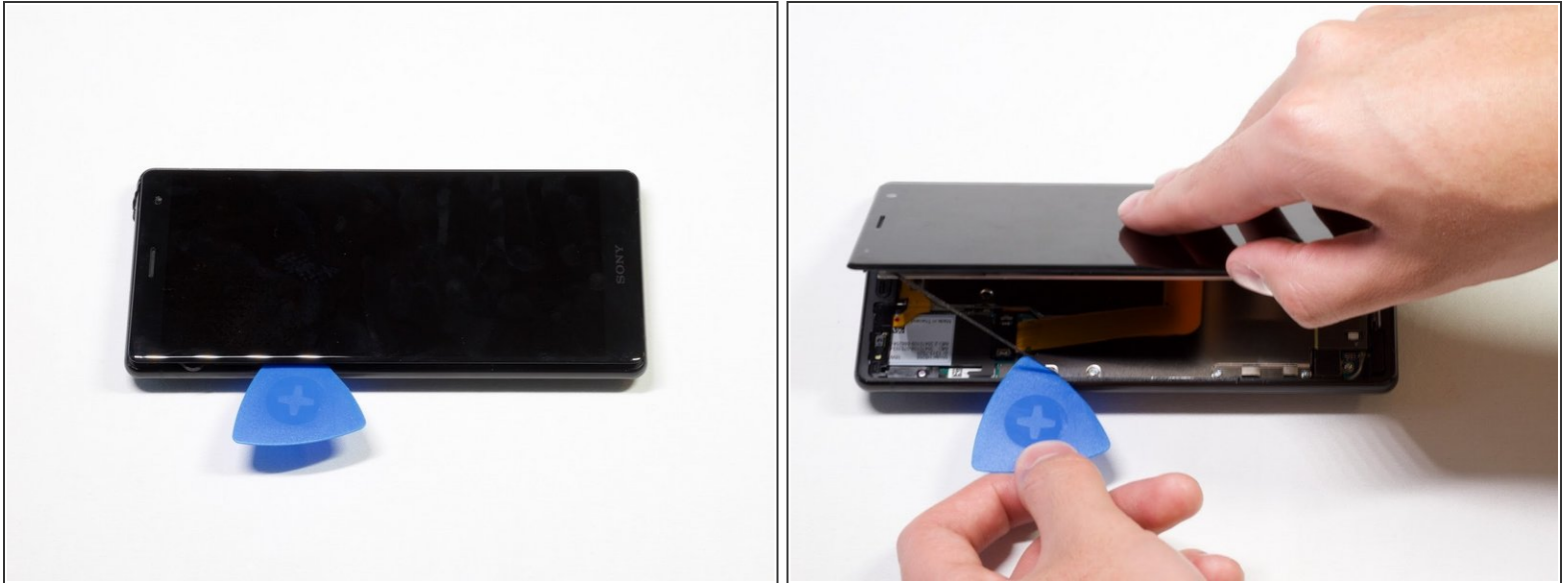
Step 2



- Scrape all the glue from the inside edges by inserting opening picks into the bottom edge of the phone and working your way around the edges.

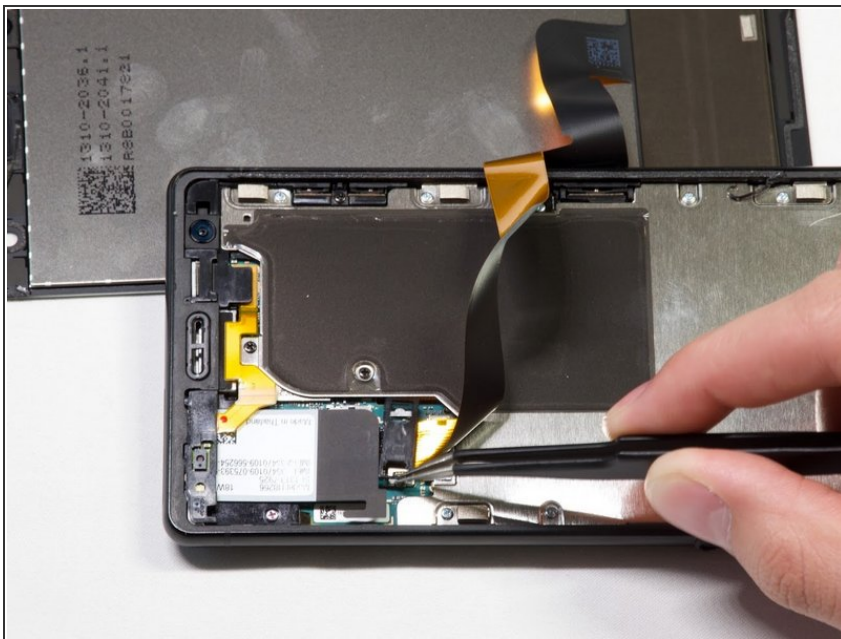
 If the glue hardens and becomes difficult to move the plastic around the edges, reheat the phone.

Step 3



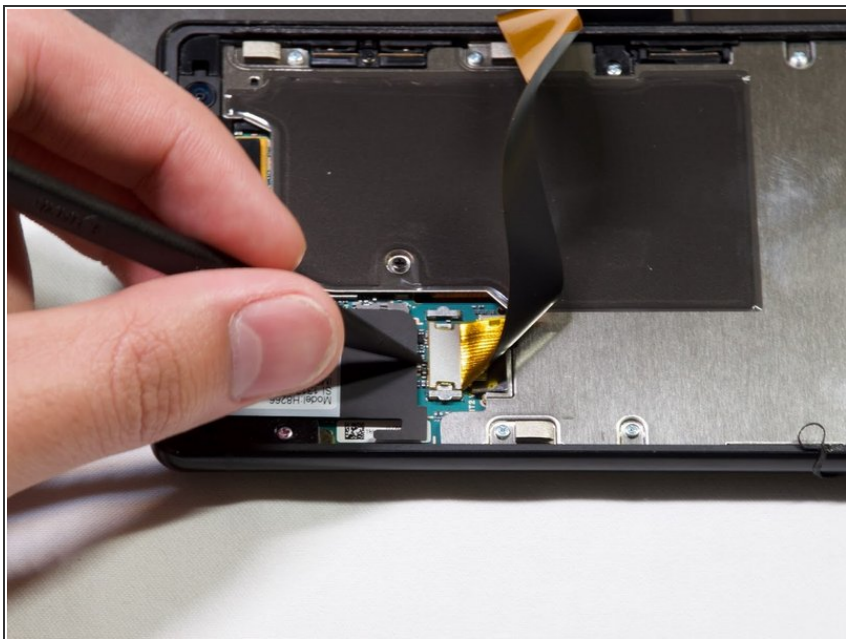
- Pry open the phone by inserting an opening pick under one of the edges and removing the screen.
- ⓘ The screen is still attached by a connector, so do not pull the pieces apart.

Step 4



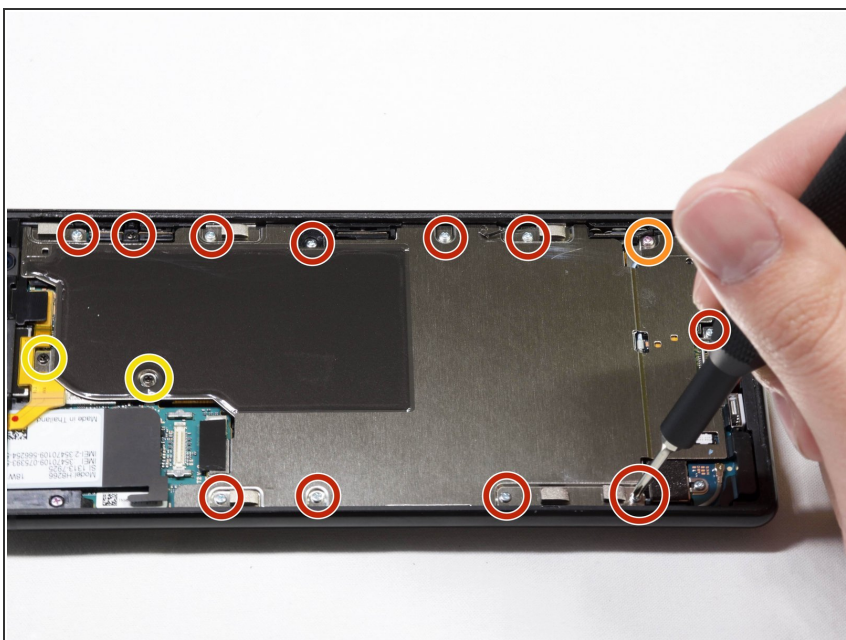
- Remove the bracket covering the connector by grabbing one side of the bracket with angled tweezers and gently pulling it off.

Step 5



- Gently remove the connector by using a spudger to pop it off.

Step 6 — Battery



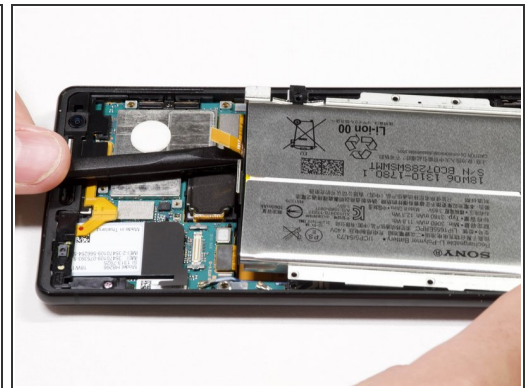
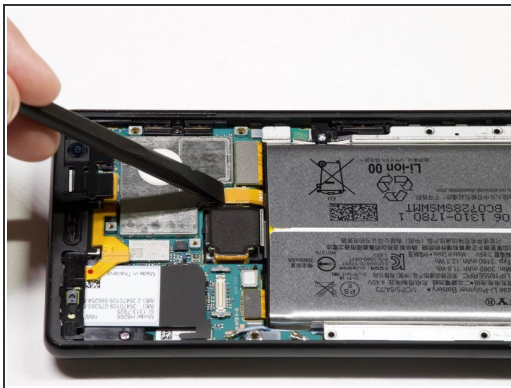
- Take out the twelve 3.5mm screws using the Phillips #00 screwdriver.
- Remove the one 3 mm Phillips #00 screws.
- Remove the two 1mm Phillips #00 screws.
- ⓘ Fifteen screws should be removed in total in this step. (Not all the screws are visible in the picture.)

Step 7



- Lift the metal screen shield out of the phone.

Step 8



- Use the spudger to pry up the battery flex connector to pop the battery out.

Step 9



- Lift the battery out of the phone.

Step 10 — Rear Camera



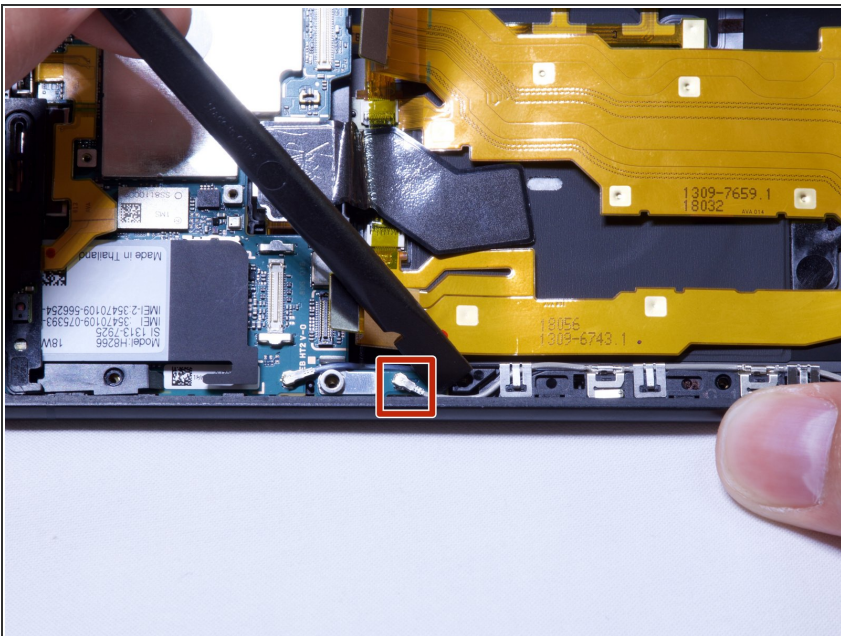
- Pry off the flex connector with a spudger.

Step 11



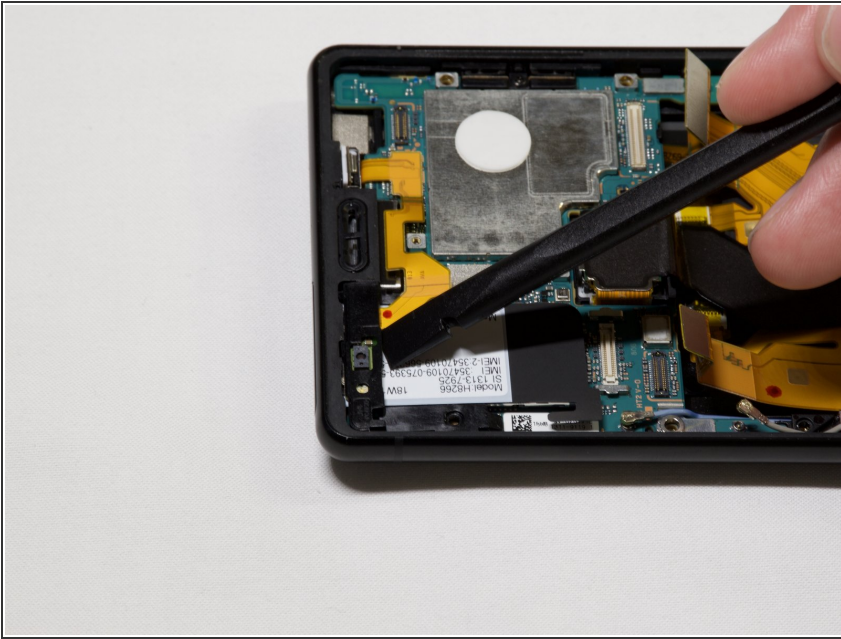
- Take out the one 3mm screw on the motherboard with the Phillips #00 screwdriver.

Step 12



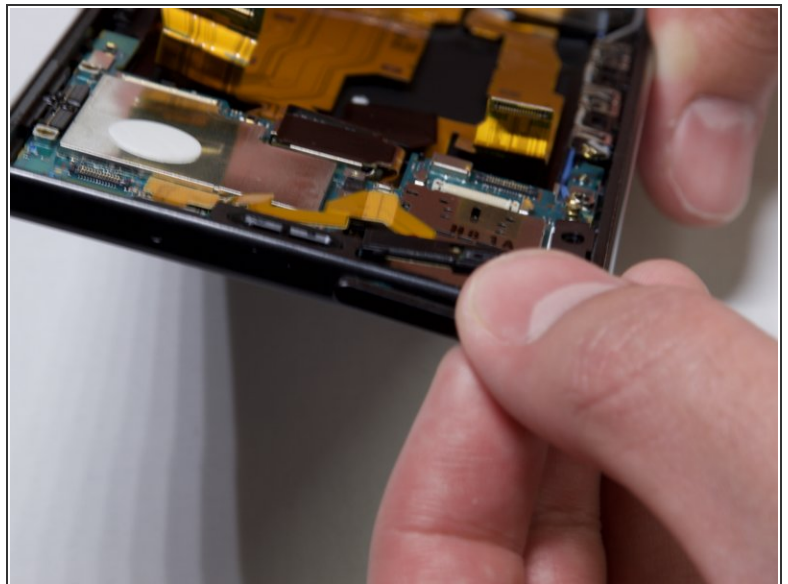
- Using a spudger, remove the antenna connector.

Step 13



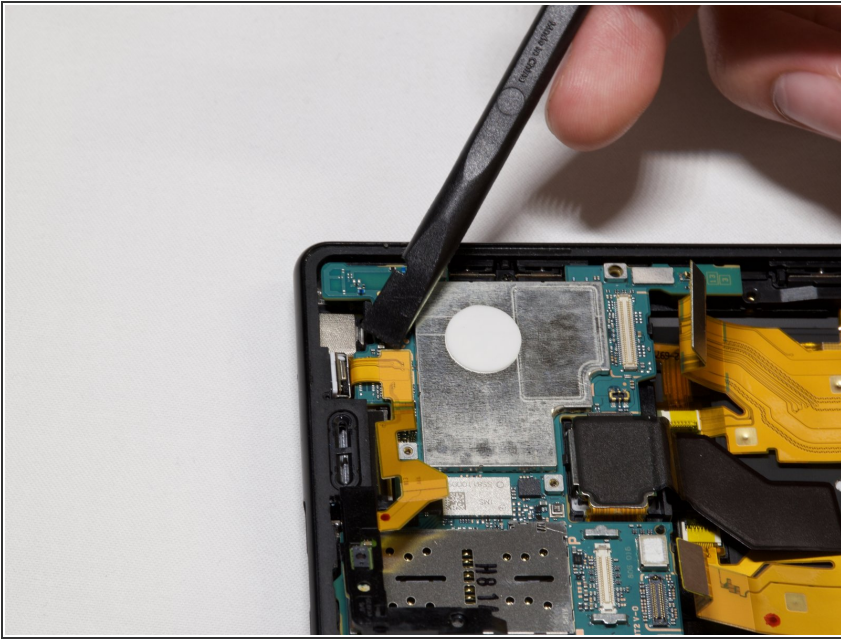
- Gently lift the proximity sensor bracket by using a spudger.

Step 14



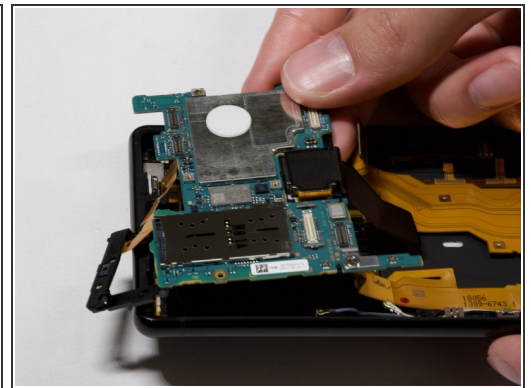
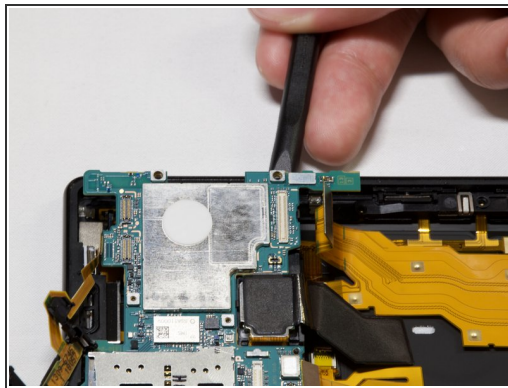
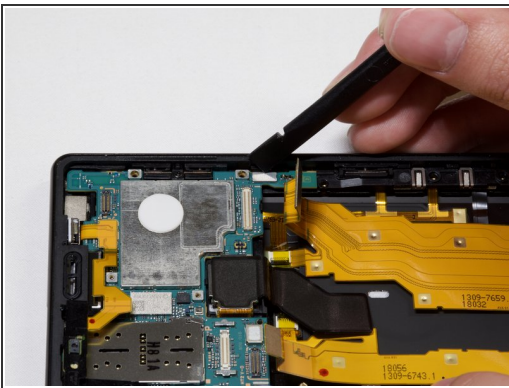
- Remove the SIM card holder.

Step 15



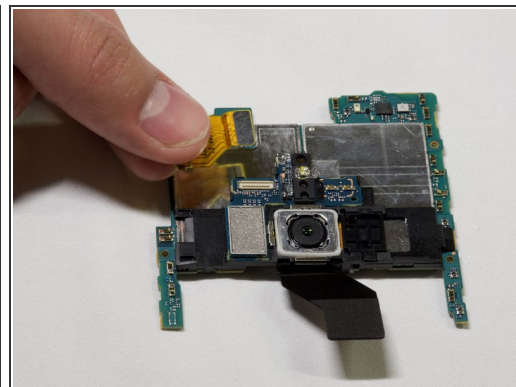
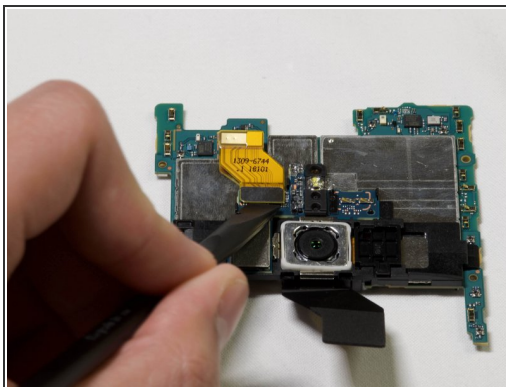
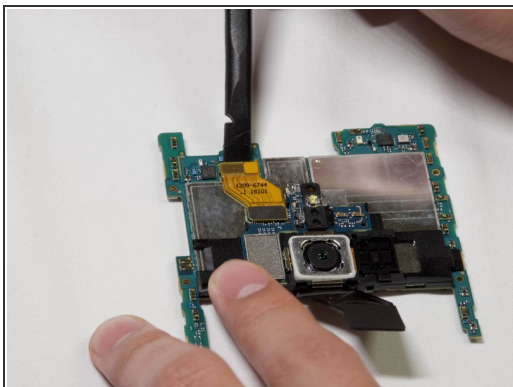
- Pry off the flex connector using the spudger.

Step 16



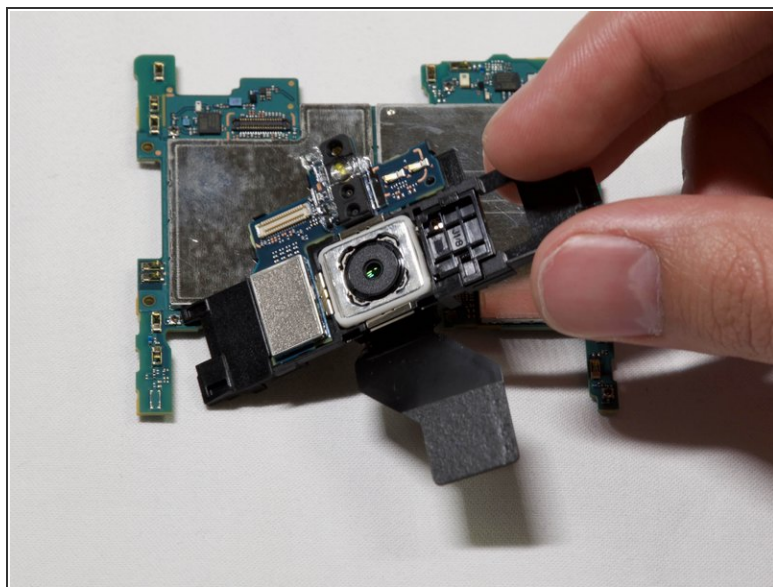
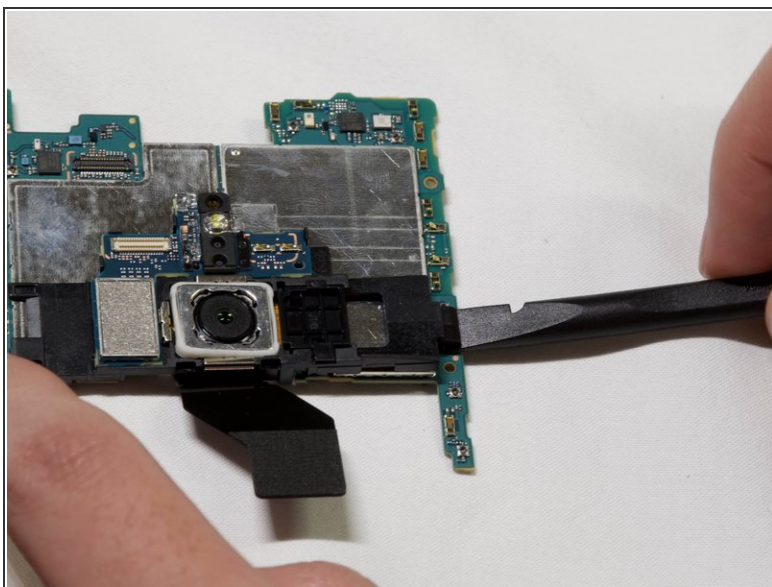
- Use the spudger to lift the motherboard out of the phone.

Step 17



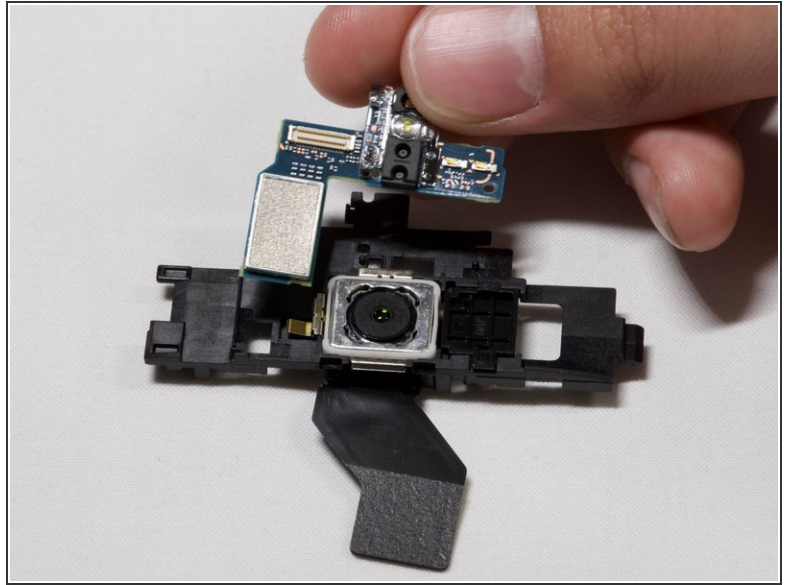
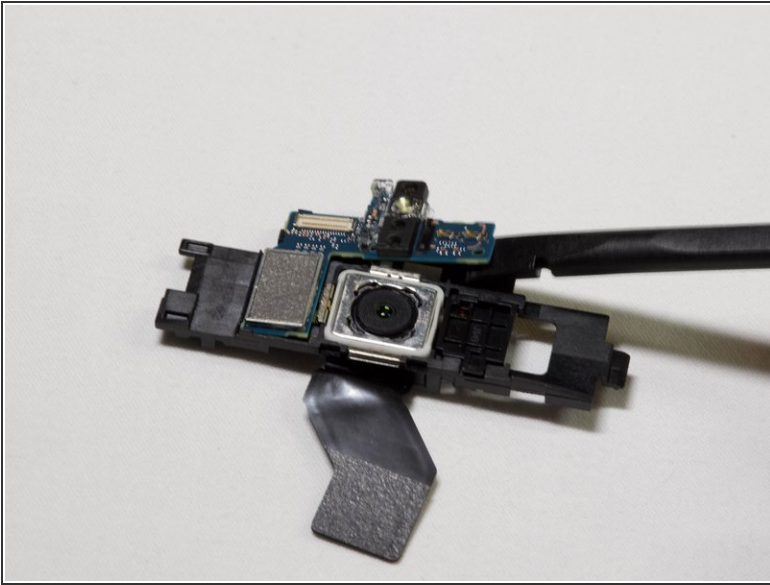
- Disconnect the yellow connector by gently prying both sides of it using a spudger.

Step 18



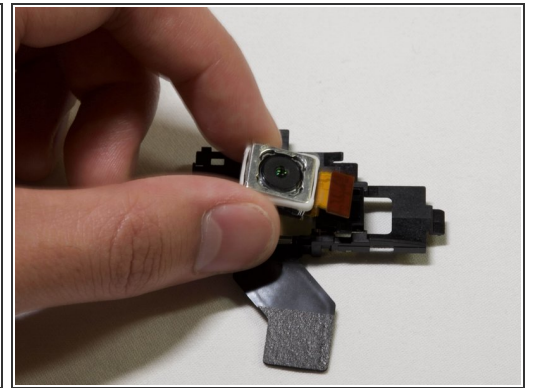
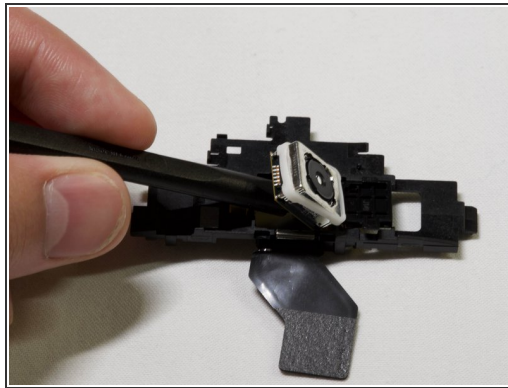
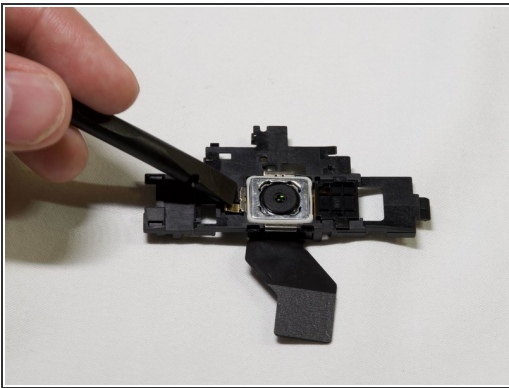
- Disconnect the camera module from the motherboard by pulling the module up from the side using a spudger.

Step 19



- Remove the upper module by gently lifting it with a spudger.

Step 20



- Gently lift up the rear camera by using a spudger under the rear camera.

To reassemble your device, follow these instructions in reverse order.