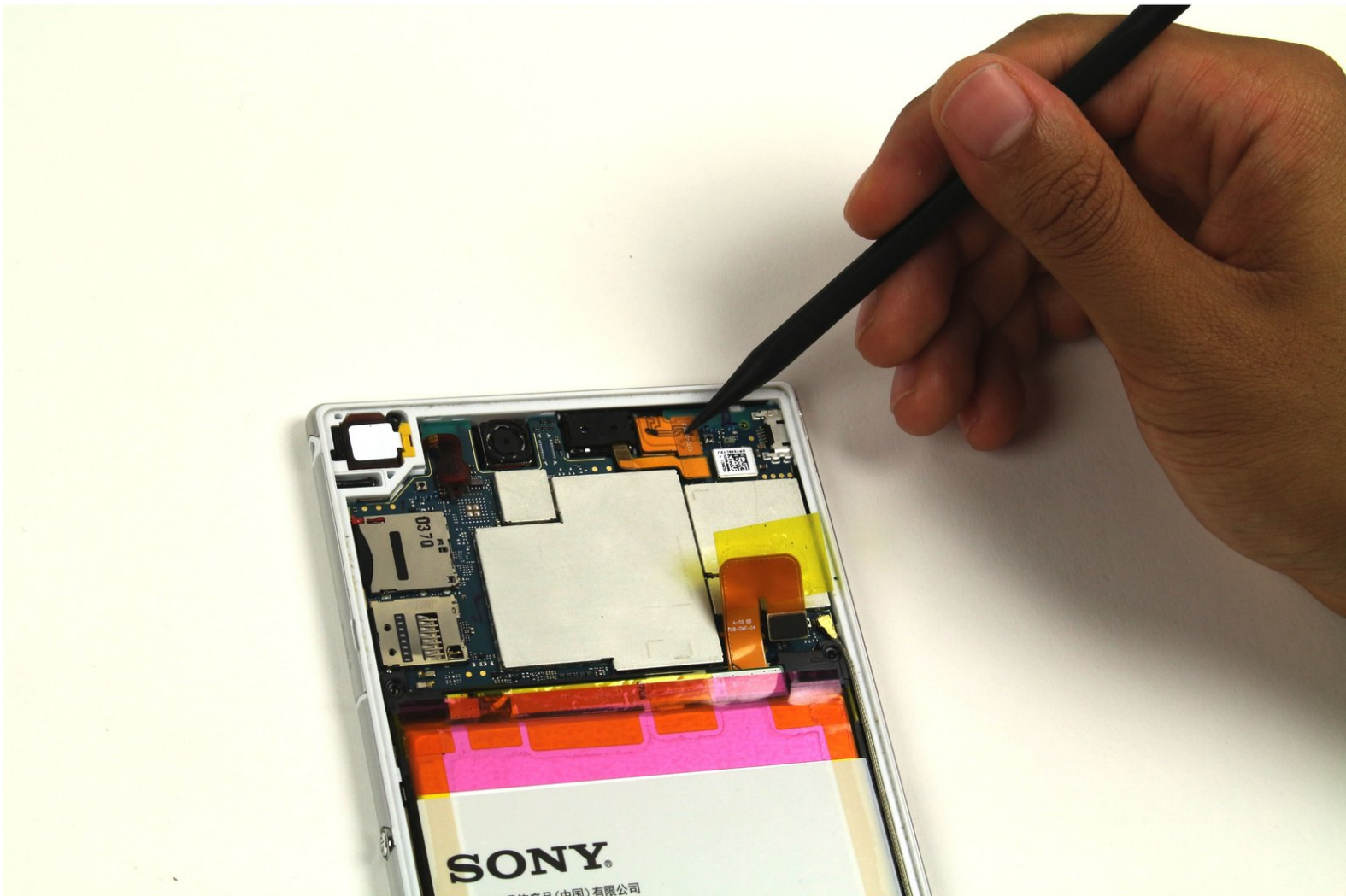




# Sony Xperia Z Ultra Front Camera Replacement

In this guide, you will learn the necessary steps to change the battery of the Sony Xperia Z Ultra. Replacement is quite simple once the steps of removing the battery are completed beforehand.

Written By: Aaron Quinn



## INTRODUCTION

If your screen went black while using the front camera and performing a hard reset and software update did not fix this problem, replacing the front camera may solve these problems.



### TOOLS:

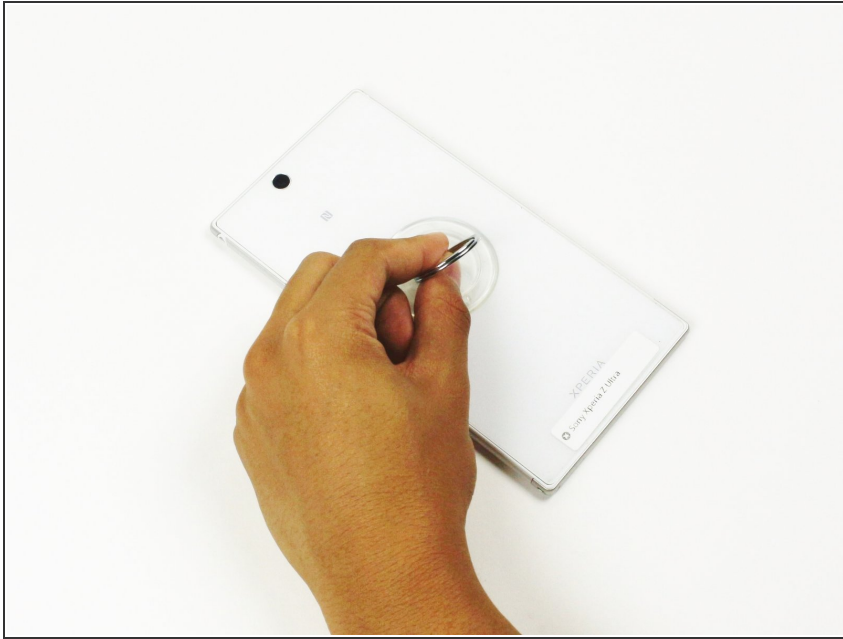
- [Spudger](#) (1)
- [Phillips #000 Screwdriver](#) (1)
- [Suction Handle](#) (1)
- [Magnetic Project Mat](#) (1)



### PARTS:

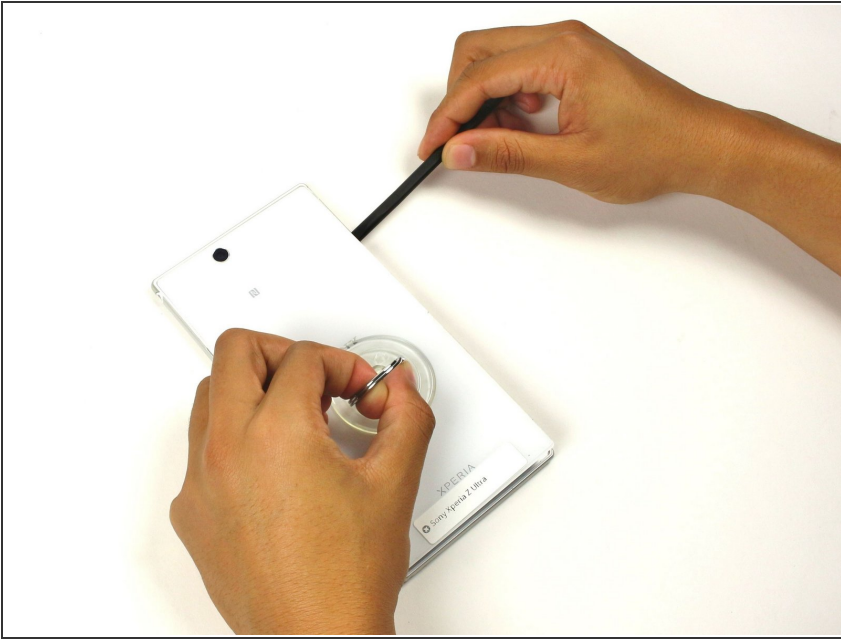
- [Sony Xperia Z Ultra Front Camera](#) (1)

## Step 1 — Battery



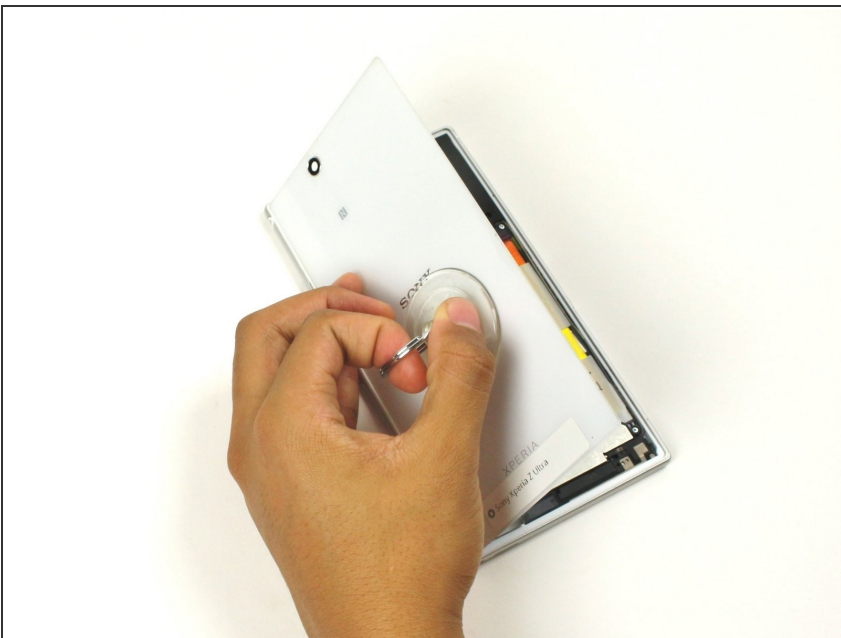
- Use the small suction cup to lift the back panel:
- Press the small suction cup on to the middle of the back panel.

## Step 2



- While holding the Sony Xperia Z ultra down with your left hand, slightly pull the small suction cup upwards to create a small opening between the back panel and the front panel.
- While continuing to pull the small suction cup upwards, insert the spudger in the small opening.
- Pry the front panel downwards with the spudger while continuing to pull the small suction cup upwards.

## Step 3



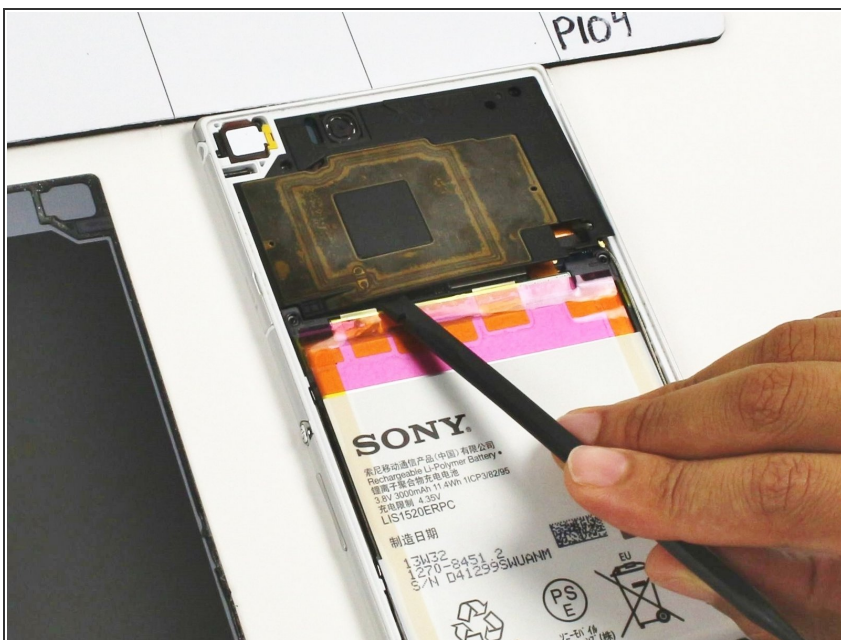
- Remove the back panel by pulling the small suction cup upwards.

## Step 4



- Remove the following six screws with a Phillips #000 screwdriver:
  - five silver 2.1 mm screws
  - one gold 3.1 mm screw

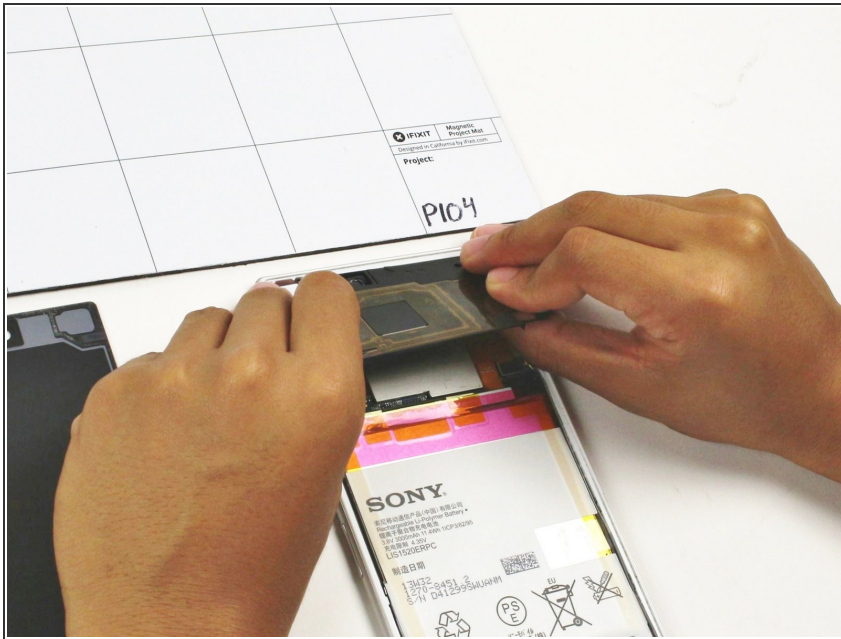
## Step 5



- Pry the plastic motherboard shield open by placing the spudger under the shield and running it along the edges.



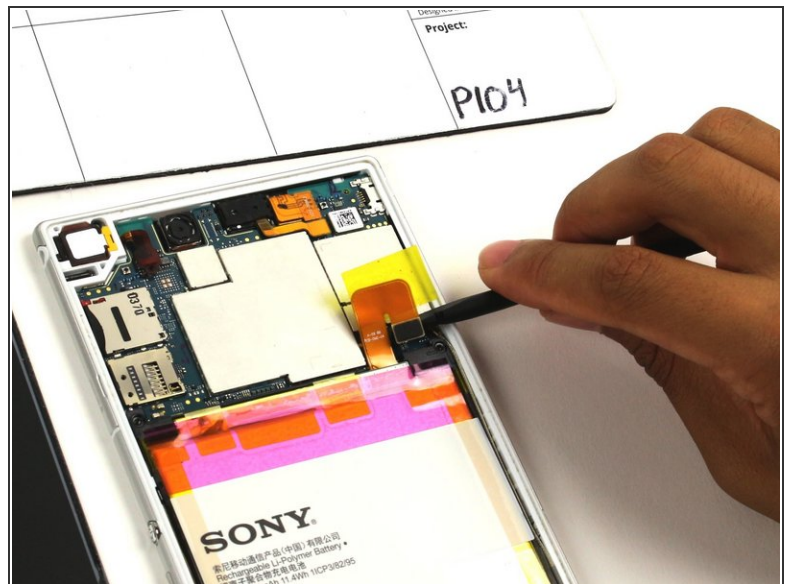
## Step 6



⚠ Use care to remove the motherboard shield, as it may break. The motherboard shield is made of a very thin plastic.

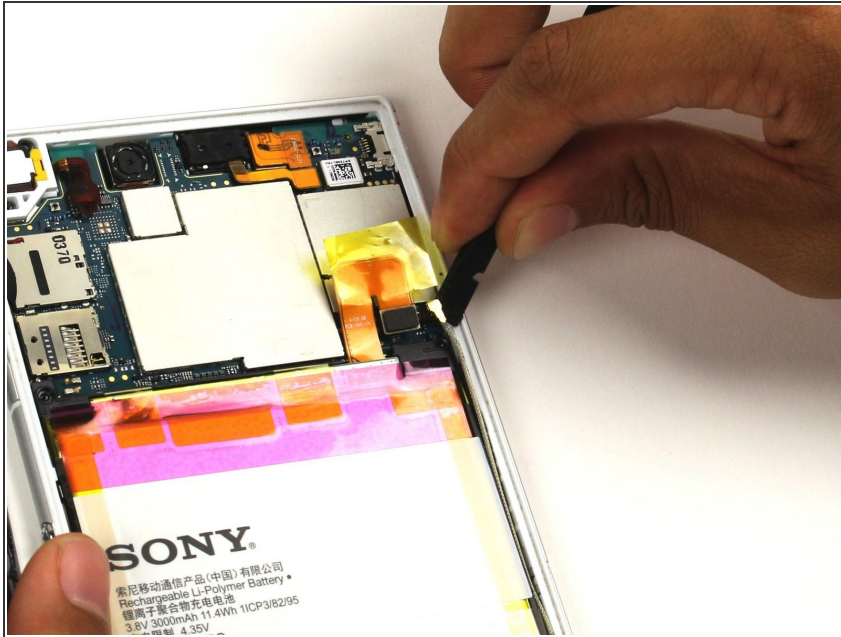
- Remove the motherboard shield by lifting the lower end upwards first.

## Step 7



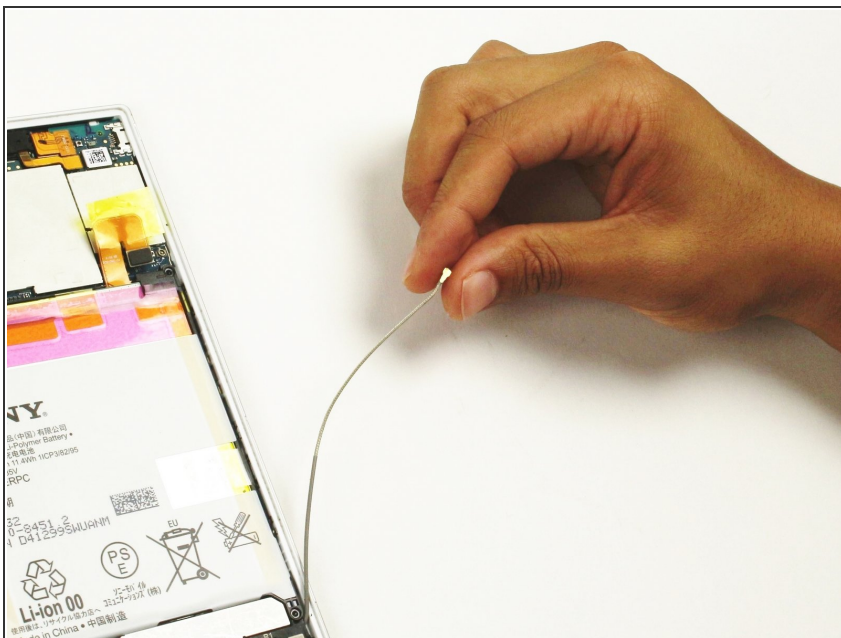
- Detach the battery connection cable by prying it upward with the spudger.

## Step 8



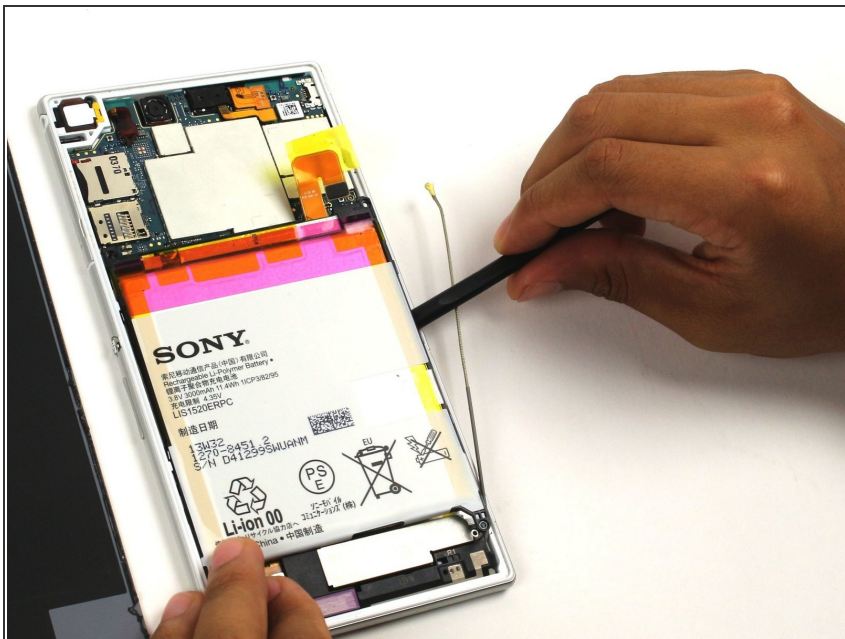
- Pry the upper end of the antenna upwards with the spudger.

## Step 9



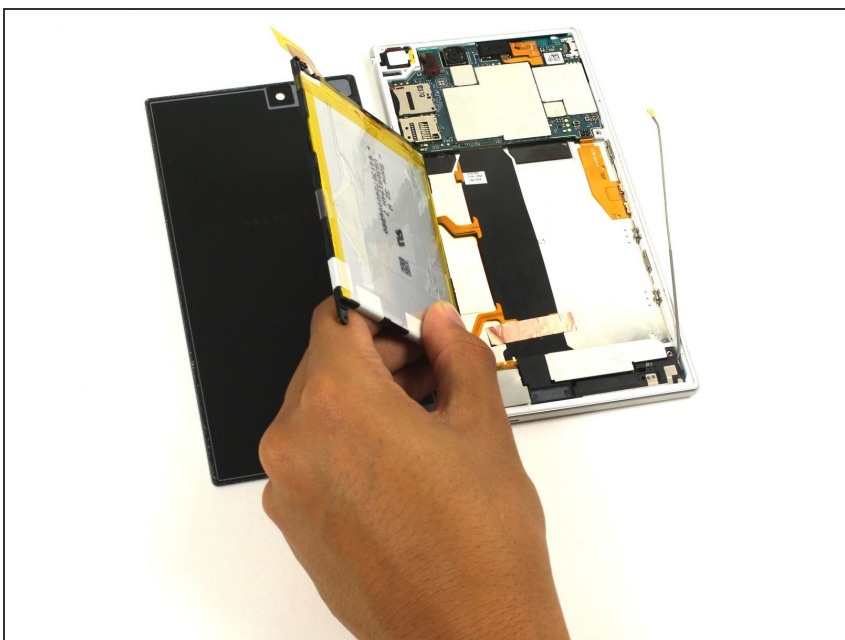
- Detach the antenna by pulling the upper end upwards and outwards.

## Step 10



- Insert the spudger underneath the battery and run it back and forth to remove any adhesive.

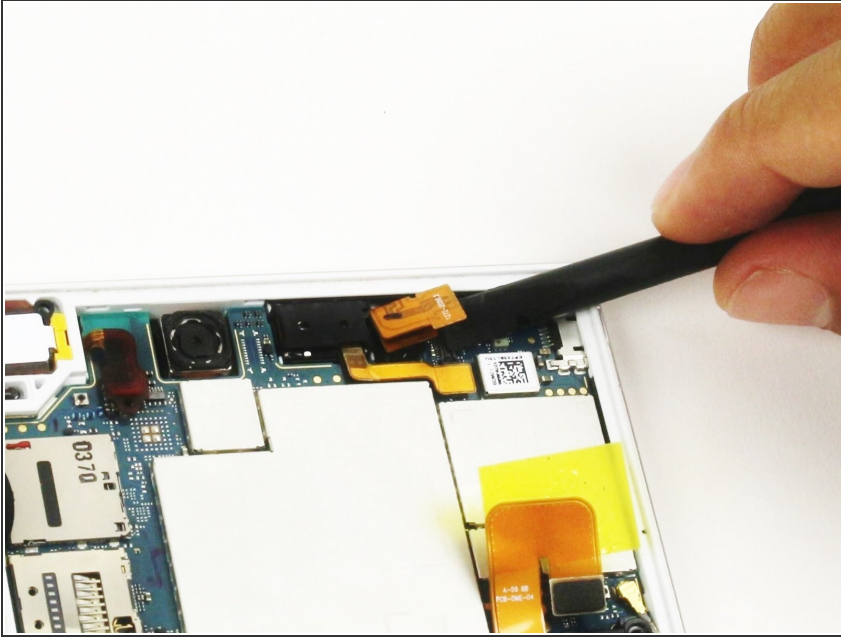
## Step 11



- Remove the battery from the phone.

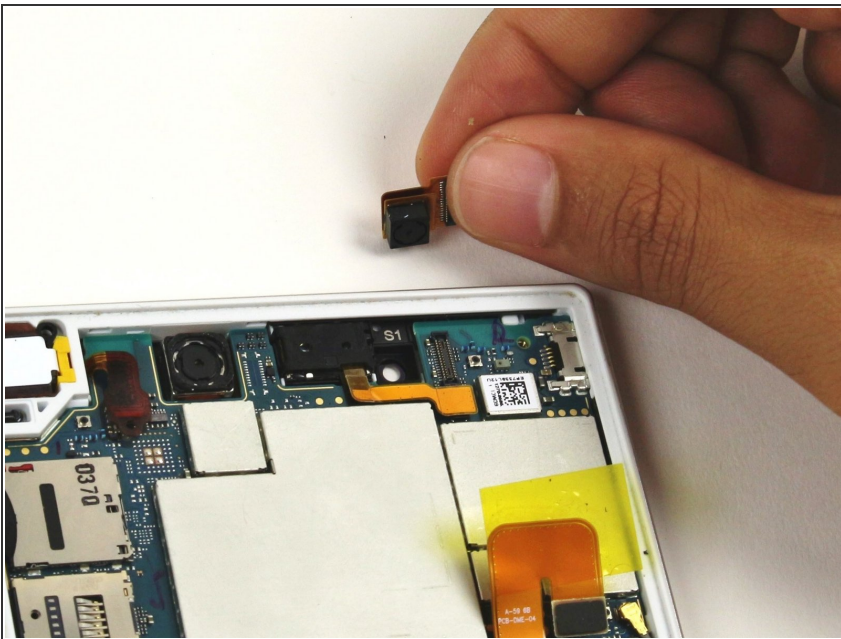


## Step 12 — Front Camera



- ⚠ Use care to pry the front camera off, as it can easily be damaged if too much force is used. The connection from the front facing camera to the motherboard is delicate.
- Pry the connection upwards from the motherboard with the spudger to reveal the front facing camera.

## Step 13



- Remove the front facing camera by pulling upward on the flap to its right.

To reassemble your device, follow these instructions in reverse order.