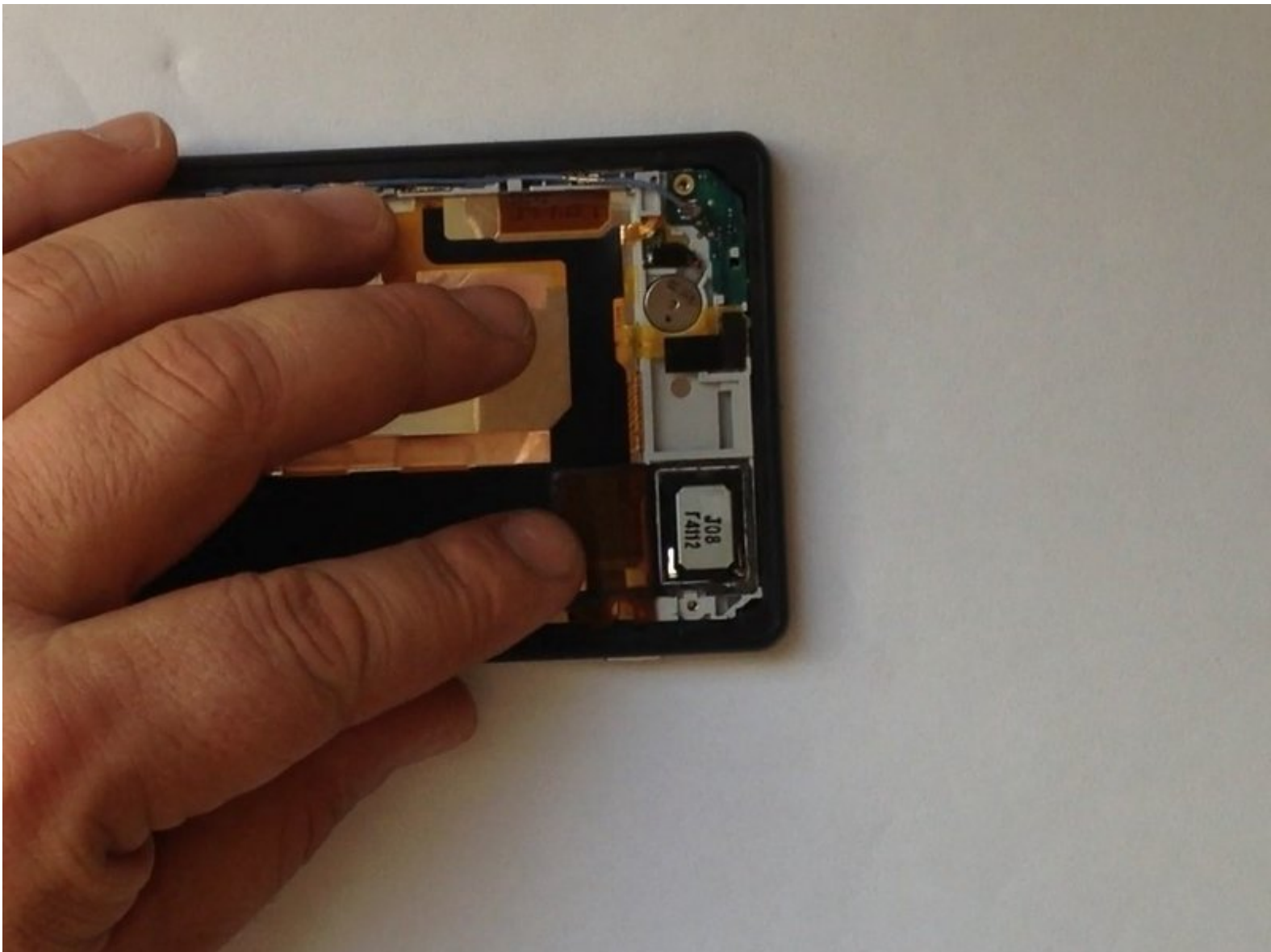




# Sony Xperia Z2 Loudspeaker Replacement

Sony Xperia Z2 Loudspeaker Replacement

Written By: ZFix



# INTRODUCTION

How to disassemble the phone and replace the Loudspeaker.

[Please SUBSCRIBE to my channel ツ](#)

[video: <http://youtu.be/qgkuhEw-CtQ>]



## TOOLS:

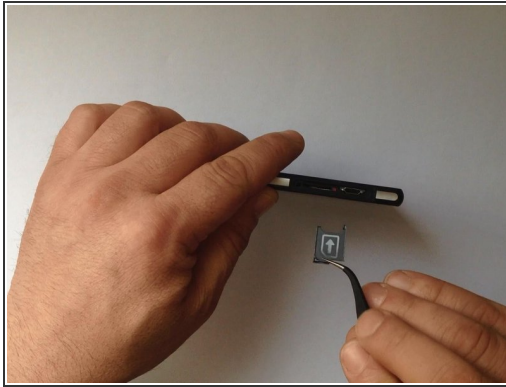
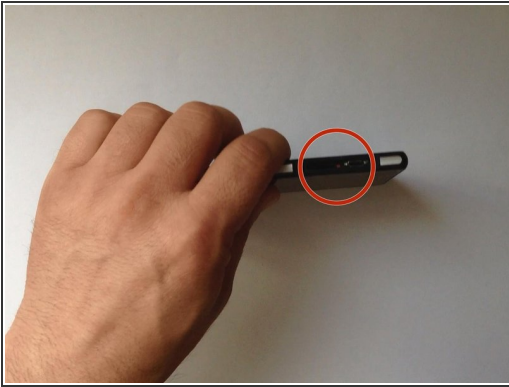
- [Tesa 61395 Tape](#) (1)
- [iFixit Opening Tools](#) (1)
- [Suction Handle](#) (1)
- [Spudger](#) (1)
- [Phillips #00 Screwdriver](#) (1)
- [Tweezers](#) (1)



## PARTS:

- [Sony Xperia Z/Z1/Z2/Z3 Vibrator](#) (1)
- [Sony Xperia Z2 Speaker Assembly](#) (1)

## Step 1 — Rear / Battery Cover



- Switch off the phone.
- If you can't switch it off, you can use the OFF button near to the SIM card Tray.
- Warm the Back Cover. You can use a hairdryer.

⚠ Be careful, the Back Cover is plastic.

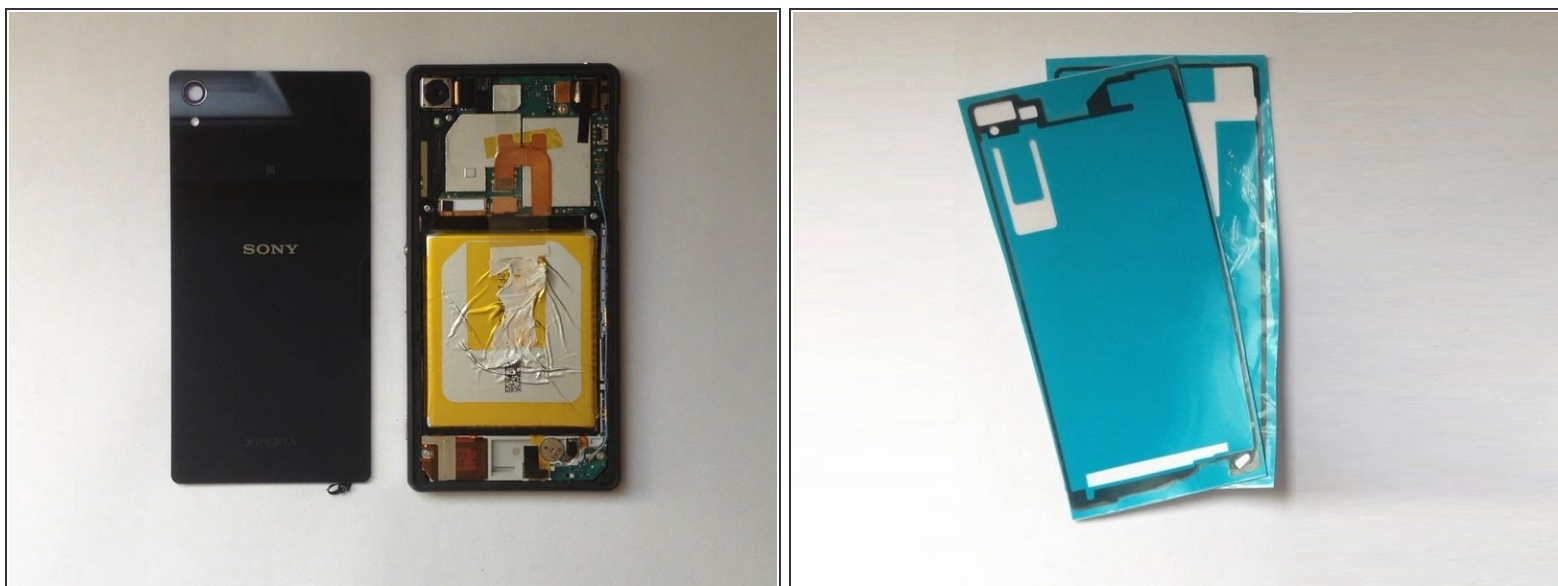
## Step 2



- Use a small suction cup and plastic tools for separating the Rear panel.

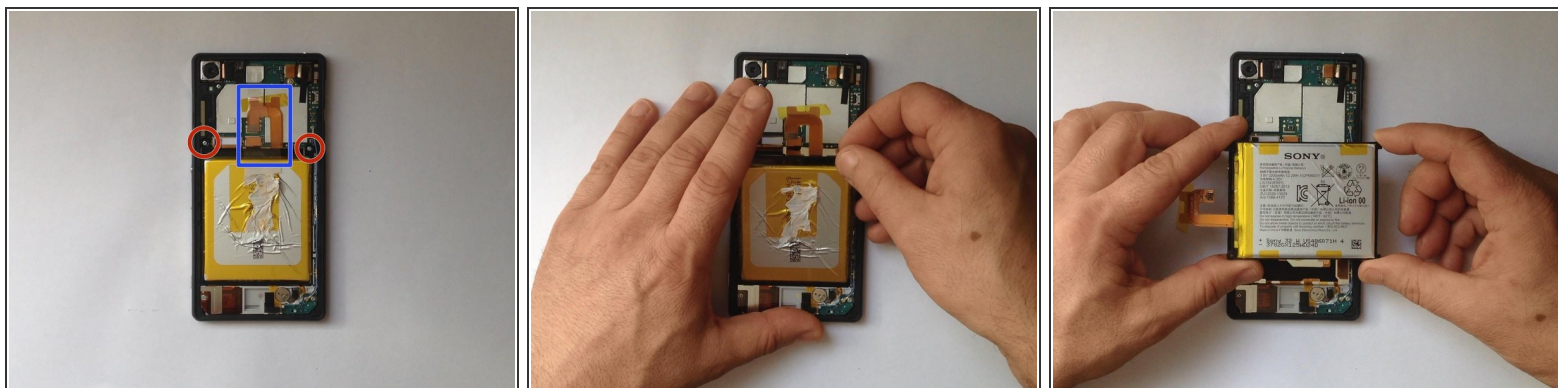
⚠ There is Adhesive tape on the edges of the phone and some between the Battery and the Back Cover, as well. I found a small tab to pull just inside the top of the cover that removed the adhesive and released the back panel from the battery. Its that same style adhesive strip as used in the Iphone 5/5c/5s.

### Step 3



- Before installing the new cover, you must clean the phone from the old adhesive tape and install a new one (if your spare part has come without double sided adhesive tape).

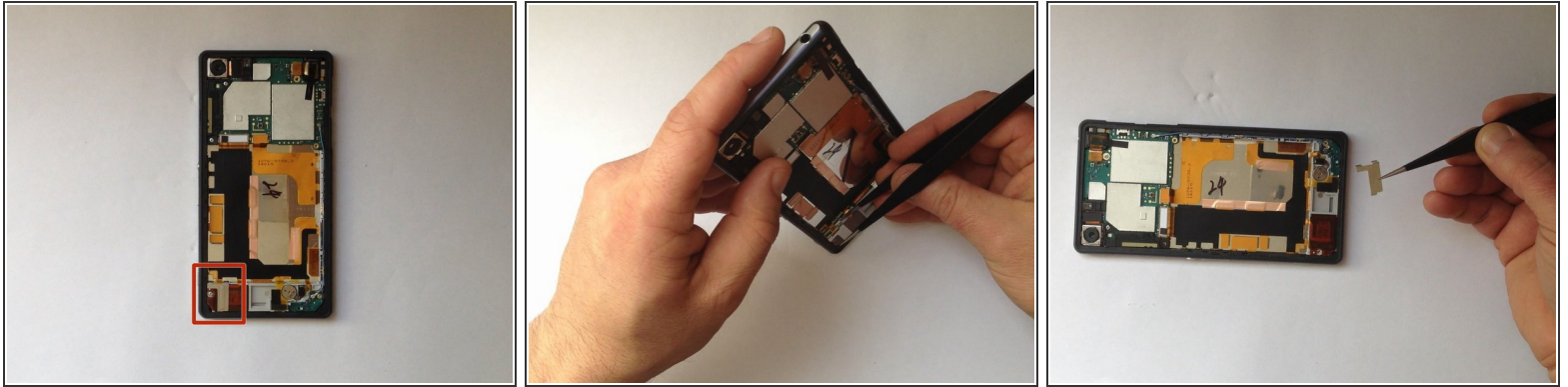
### Step 4 — Battery



- Disconnect the Battery Flex Cable and remove the two Philips screws.
- Li-Polymer Battery, 3.8V, 3200mAh
- Part number: **LIS1543ERPC**

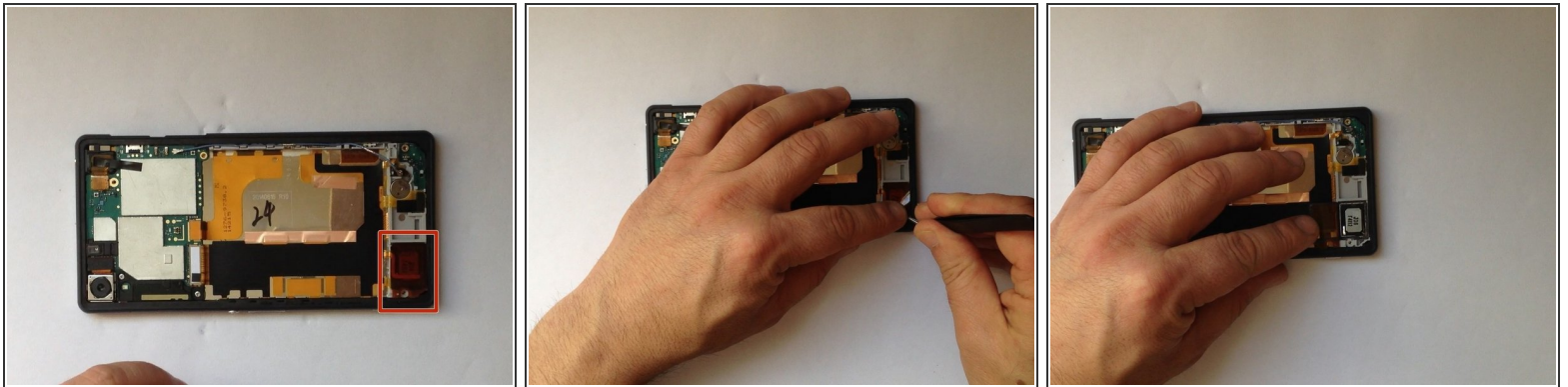
★ [Please SUBSCRIBE to my channel ツ](#)

## Step 5 — Loudspeaker



- Remove the Loudspeaker metal bracket.

## Step 6



- Part of the Volume/PowerON/Mic flex cable is affixed onto the Loudspeaker/Vibro motor module.
- Under the Flex cable is the Loudspeaker.
- You can change only the Loudspeaker or or the Loudspeaker & Holder module.
- Loudspeaker & Holder module Part No: **1282-2013**
- .



[Please SUBSCRIBE to my channel ツ](#)

To reassemble your device, follow these instructions in reverse order.