



Sony Xperia Z4 Tablet Repairability Assessment

Repairability Assessment of the Sony Xperia Z4 Tablet performed on January 17, 2017.

Written By: Evan Noronha



INTRODUCTION

Although the Sony Xperia Z4 Tablet houses only Phillips screws, we had to break the difficult to remove display to find them. The fact that this tablet is difficult to open gets it a 5 out of 10 on our repairability scale.



TOOLS:

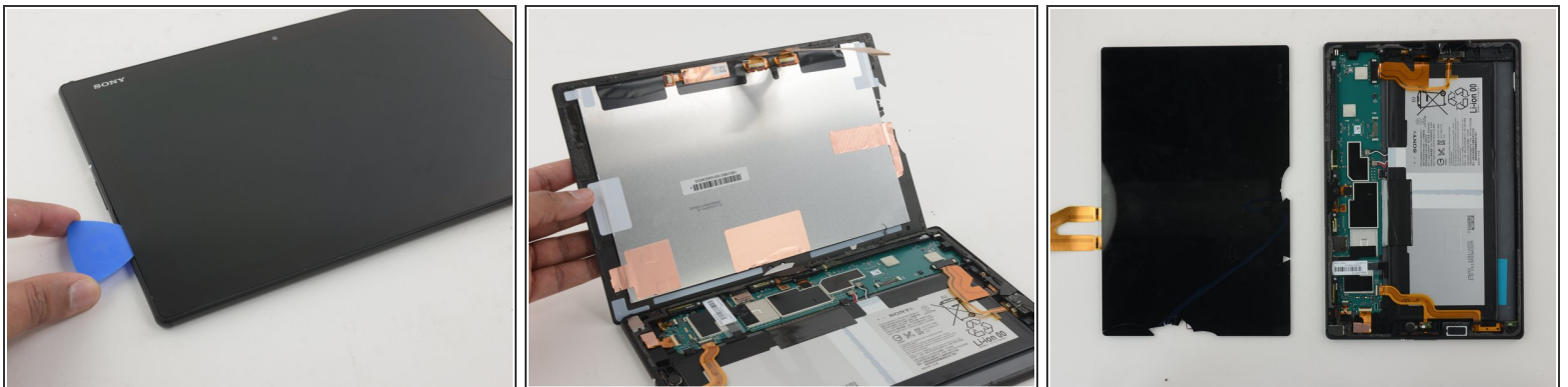
- [Phillips #00 Screwdriver](#) (1)
 - [Spudger](#) (1)
 - [Plastic Cards](#) (1)
 - [Jimmy](#) (1)
 - [iFixit Opening Picks set of 6](#) (1)
-

Step 1 — Sony Xperia Z4 Tablet Repairability Assessment



- Reference shots.

Step 2



- The Xperia Z4 features a pair of notches that flank the display, and seem good candidates for prying. We used them as our point of entry, however, the glass soon shattered.
- ❗ The display could likely be removed safely if a guide had been provided. If we tried again, we might also be able to remove it safely with more heat and caution. That said, the front panel is much more delicate than necessary.
- After extended prying, the device is opened, a simple press fit connector secures the fused display assembly to the board.

Step 3



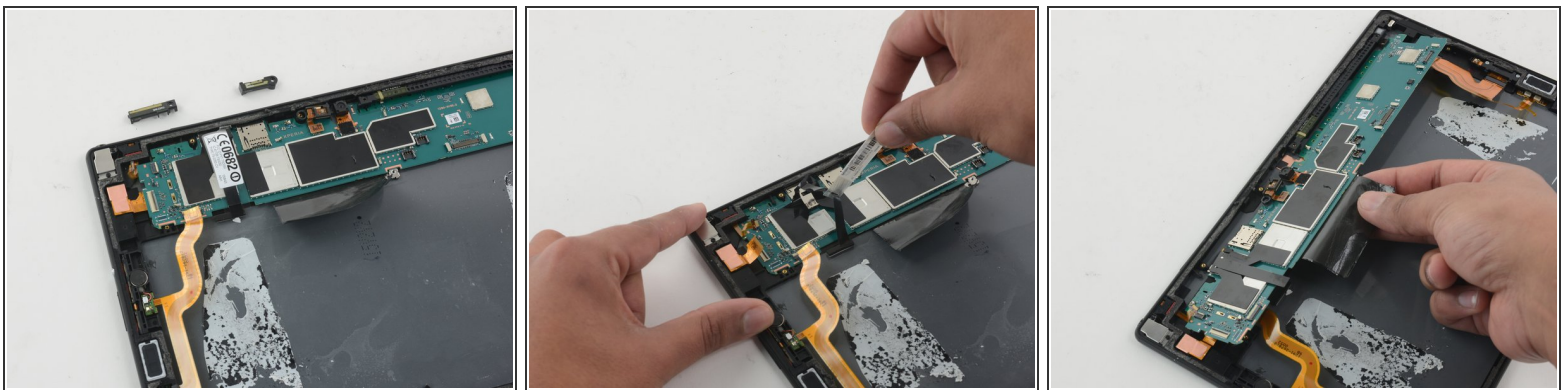
- Two ribbon cables must be disconnected before attempting battery removal.
- After difficulty with the display, this pull tab is a welcome sight. Pull tabs make battery removal safer and easier, as prying can damage the battery or other components.
- ❗ Unfortunately the tab was super delicate, and pulling broke it. We had to resort to prying after all.
- Removing the battery, we discover a second pull-tab, previously unseen as it was folded under the battery. Had the second tab been accessible, we might have avoided prying.
- Whether the faulty tab was a result of poor quality assurance, we can't say. But two strips of pull-tab adhesive are good marks for repairability.

Step 4



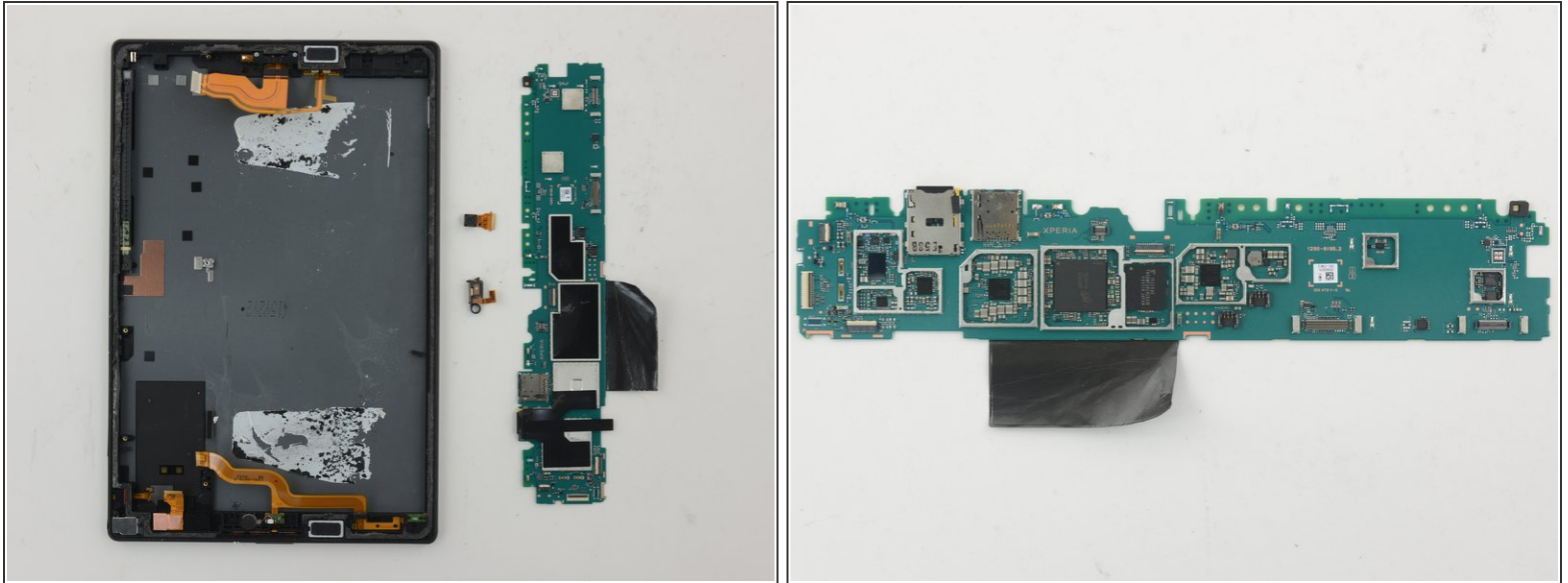
- After prying and the application of acetone, we are able to separate the adhesive and free the battery.

Step 5



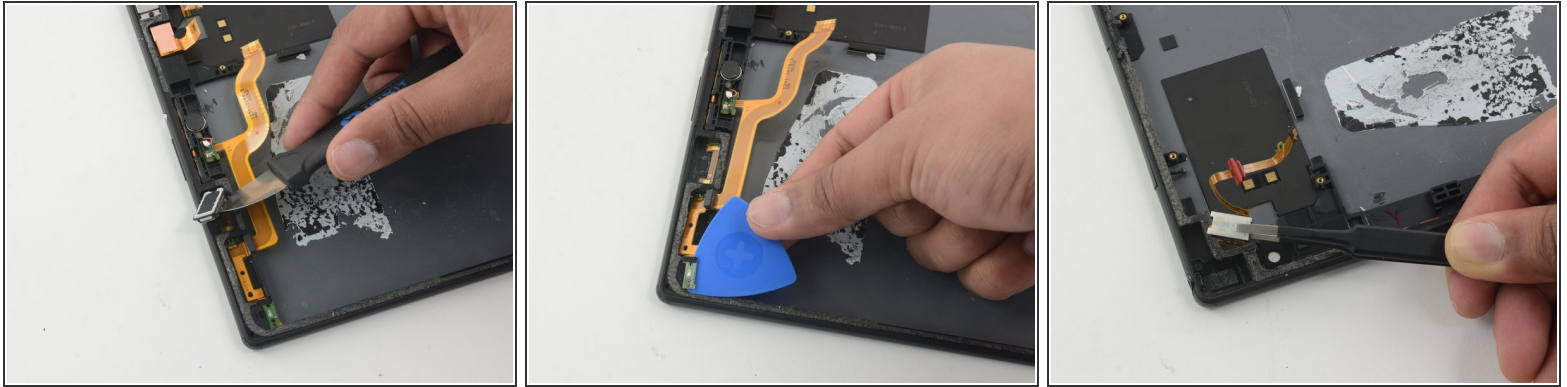
- The two antennas are secured over the motherboard, and must first be removed.
- There's also this funky label that needs to be removed before removing the motherboard. It's not exactly tamper evident since you can replace it with no signs of damage.
- Motherboard comes free once all the Phillips screws are removed. It's a pleasant surprise there's no glue holding it in.

Step 6



- Motherboard reference shots.
- Modular motherboard components include camera and microphone.
- The motherboard is fairly bare, and the only mechanically wearing component is the SD card slot. This makes for less common, less expensive repairs.

Step 7



- The two speakers are pried them from the rear case. Simple spring contact connections make for easy repairs.
- Both the left and right flex cable assemblies are lightly adhered to the rear case. They are relatively modular making for cheaper replacement.
 - The left component cable comprises: volume and power switches, speaker contacts, and soldered vibrator.
 - The right flex cable (not pictured) is home to the microUSB port and right speaker contacts. A separate USB port is great for repairability, as it is a vital, high-wear component.
- The independent headphone jack is not adhered to the rear case. Rather, it is held snug in the rear case by a spring-loaded tab. You can pinch the tab and pull to remove it, then back the jack component out of its slot in the case to remove it.

Step 8



REPAIRABILITY SCORE:



- The Sony Xperia Z4 Tablet earns a **5 out of 10** on our repairability scale (10 is the easiest to repair):
 - Many parts are modular and can be replaced independently.
 - All screws are standard Phillips screws.
 - Battery adhesive tabs are present, but tear easily and may not be accessible in some units.
 - The delicate and arduous opening procedure leaves no room for mistakes, and must be completed to access any other component.
 - The display assembly consists of a thin fused glass panel and LCD, and is extremely difficult to remove and replace.
 - Manufacturer does not provide user-accessible repair documentation.