



Sony Xperia ZL Battery Replacement

This guide will show step-by-step instructions on how to replace your Sony Xperia ZL battery. A new battery will need to be purchased for replacement.

Written By: Liam Kanaley



INTRODUCTION

Make sure your working area is clean and that all the pieces that have been disassemble are placed in a secure place.



TOOLS:

- [JIS Driver Set](#) (1)
-

Step 1 — Battery



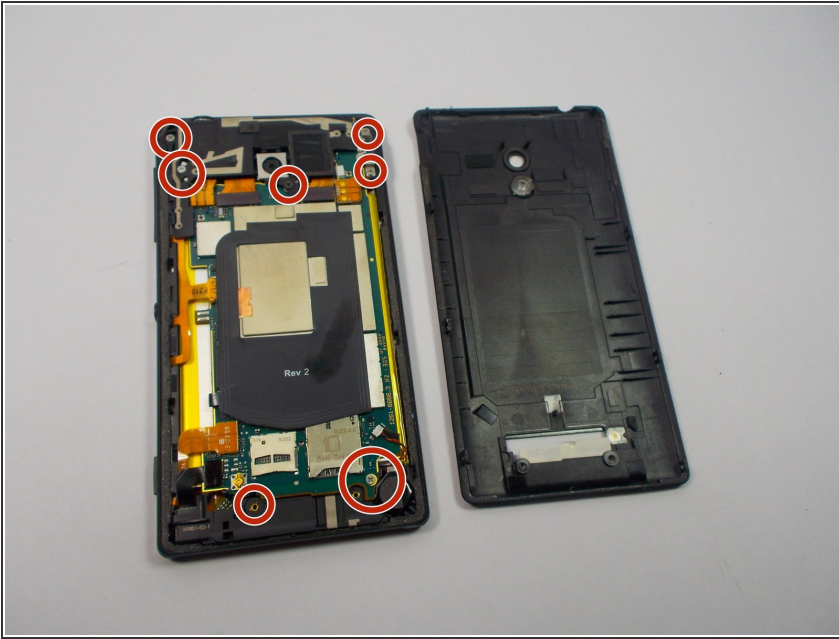
- Place the phone face down.

Step 2



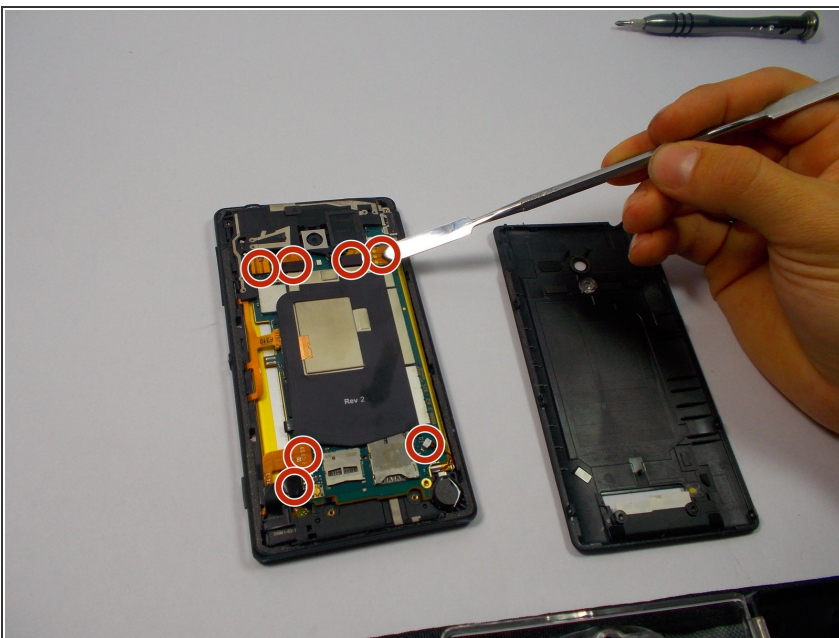
- At the bottom of the phone will be a cover that flips open. A sticker will be under and when the sticker is peeled back, two screws will be revealed. Use a JIS J00 screw head to unscrew.

Step 3



- Once the two screws have been removed. Take the prying tool to pry off the back cover of the phone. Next take a JIS J00 screwhead and unscrew the 5 screws that are located in the photo.

Step 4



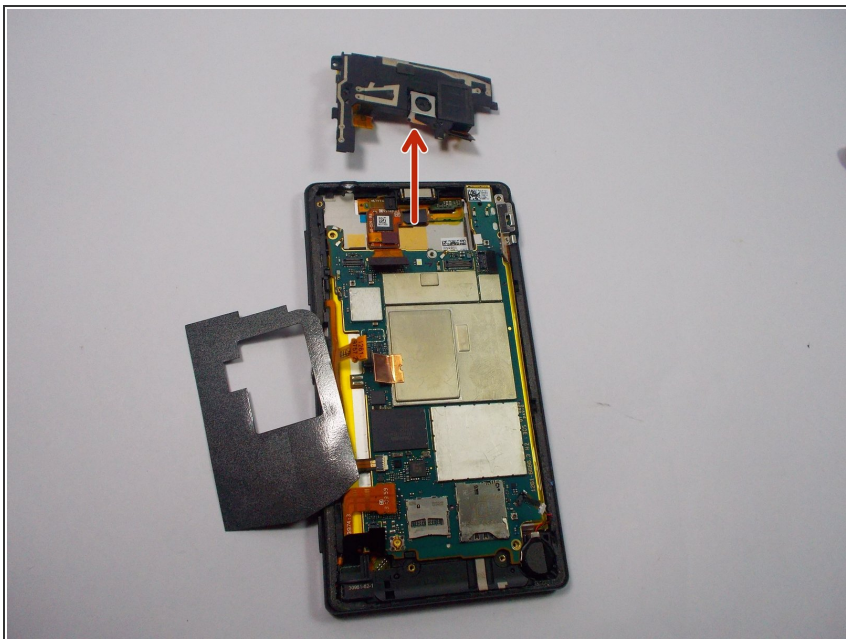
- After the screws have been taken out, carefully disconnect the 7 indicated connectors using a small plastic opening tool or spudger.
- ⚠ Metal spudgers can puncture an unprotected battery, potentially causing a fire. When working with electronics, it's important to choose a tool that's ESD-safe to avoid accidental damage to the device. The regular black nylon spudger or a plastic opening tool should be used whenever possible.

Step 5



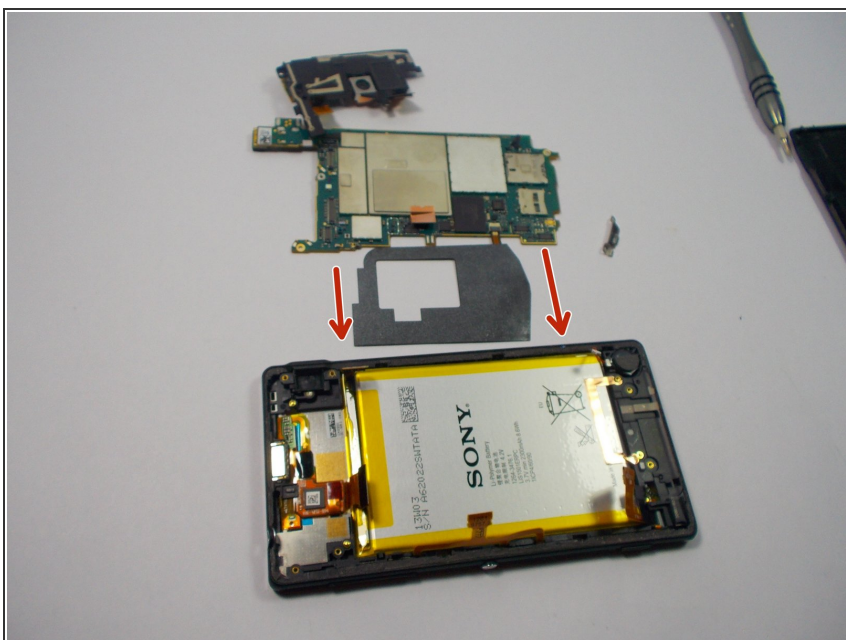
- The last connector is located under the black sticker. Peel back the black sticker and disconnect the last connector.

Step 6



- Once all the connectors have been disconnected. You will want to use a small prying tool to pry out the back camera and all its components from the phone.

Step 7



- Remove the electrical panel with a plastic opening tool.

Step 8



- Take a small plastic prying tool and pry out the battery of the phone. The battery has adhesive tape that connects it to the phone which makes it difficult to pry out. Make sure to try prying from different angles of the battery.
- Use a plastic prying tool when taking out the battery because any puncture within the battery could cause a fire.

To reassemble your device, follow these instructions in reverse order.