



Sony Xperia ZL Power Button Replacement

Replace the power button of your Sony Xperia ZL.

Written By: Liam Kanaley



INTRODUCTION

Use this guide to replace the power button of your Sony Xperia ZL.



TOOLS:

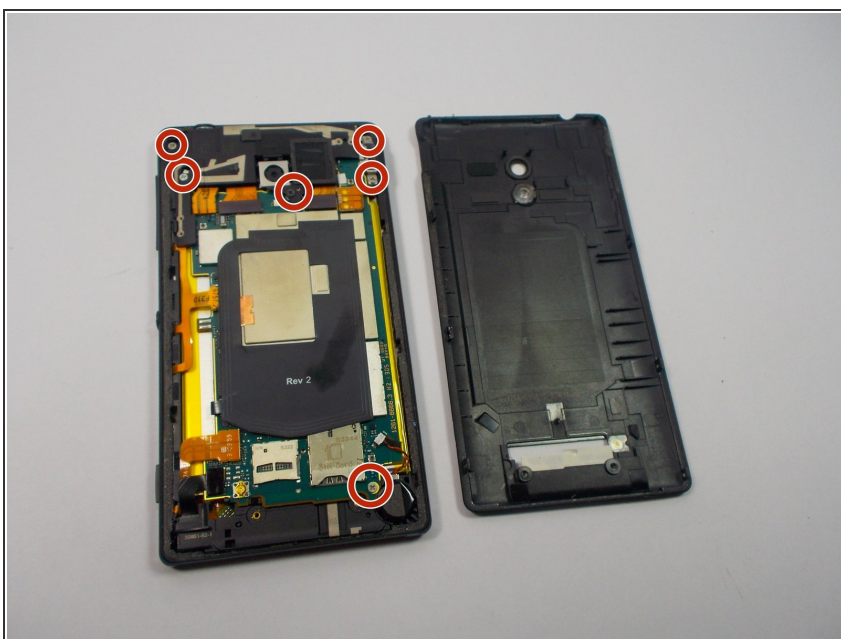
- [JIS #00 Screwdriver](#) (1)
-

Step 1 — Power Button



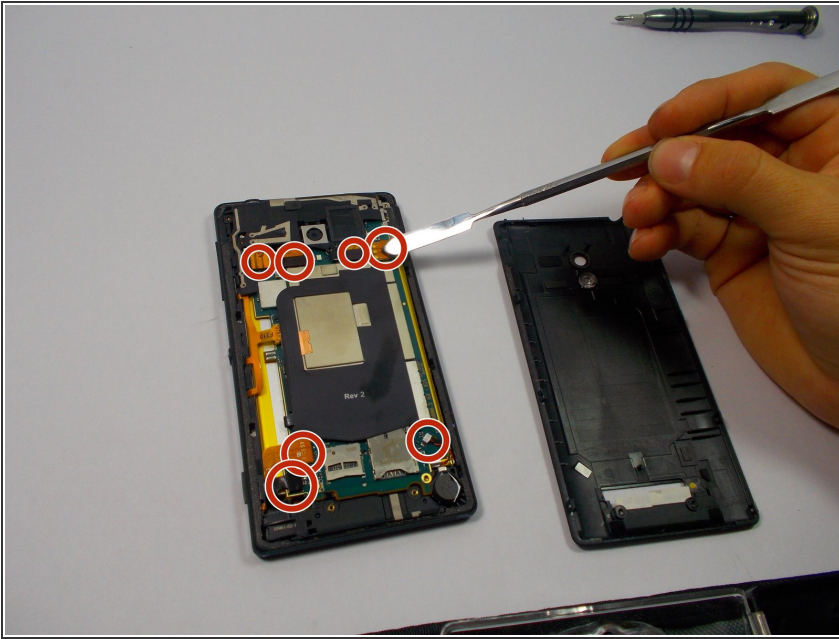
- Open the small cover on the bottom of the rear cover.
- Peel back the sticker under the cover to reveal two screws.
- Remove the two JIS #00 screws from the back of the phone.

Step 2



- Once the two screws have been removed. Take the prying tool to pry off the back cover of the phone. Next take a JIS J00 screwhead and unscrew the 5 screws that are located in the photo.

Step 3



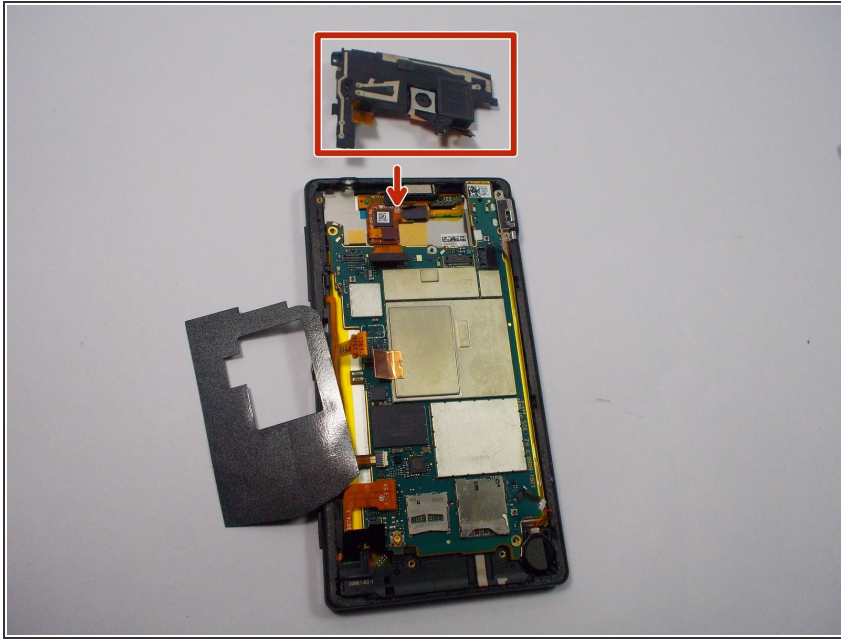
- Once the five screws have been removed, take prying tool to disconnect the the connectors that are located in the photo.
- Be careful when disconnecting the connectors because aggressive force will damage some components, or worse puncture the battery.

Step 4



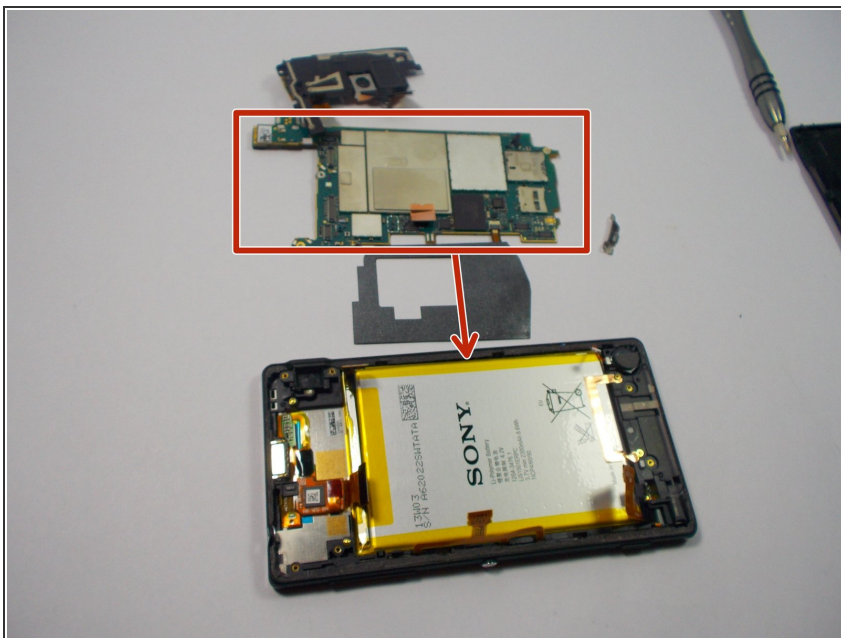
- The last connector is located under the back sticker. Peel the sticker back to get access of the connector and use a prying tool disconnect.

Step 5



- With all the connectors removed we can safely pry off the camera and all of its components using a plastic prying tool.

Step 6



- Once the camera has been removed, we can remove by prying off the electrical panel from the phone.
- When reassembling, make sure all metal to metal contacts get cleaned with any anti-grease formula. Windex is an example of this formula.

Step 7



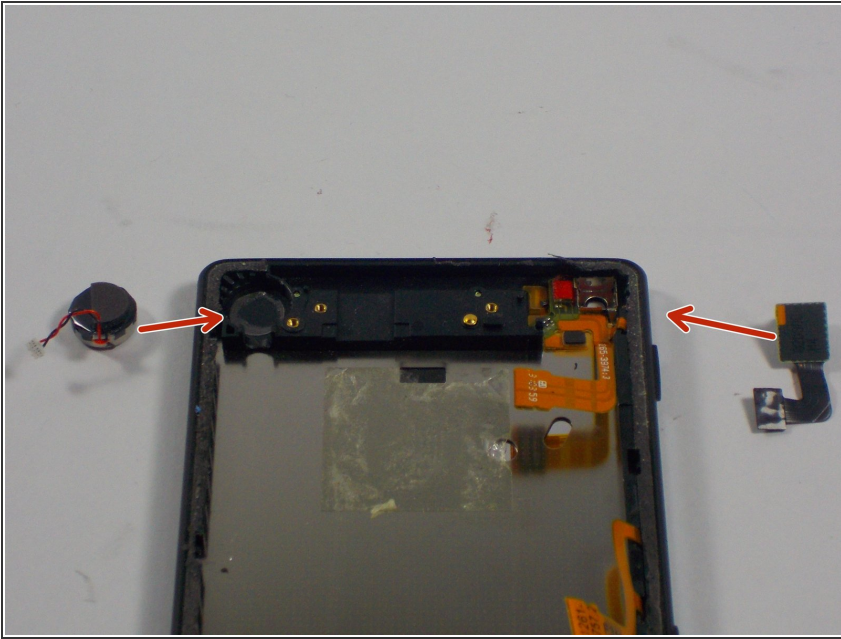
- Take a small plastic prying tool and pry out the battery of the phone. The battery has adhesive tape that connects it to the phone which makes it difficult to pry out. Make sure to try prying from different angles of the battery.
- Make sure to use a plastic prying tool to ensure that no puncture will pierce the battery.

Step 8



- With the battery out. You will want to pry out the plastic covering on the top side of the phone. This should be connected to a clip so you will need to unclip it by hand.

Step 9



- With the plastic covering removed, carefully pry off the signal receptor and front camera. The signal receptor has adhesive tape underneath so proceed with caution when prying.

Step 10



- Once the Front camera gets removed, the volume button, power button and components of the front camera will easily come off with a gently pry.
- For replacement the component comes as a whole. So if the volume, power, or front camera do not work, then all of the other components will need to be replaced together.

To reassemble your device, follow these instructions in reverse order.