



Sony Xperia ZL Screen Replacement

Replace the screen of your Sony Xperia ZL.

Written By: Liam Kanaley



INTRODUCTION

Use this guide to replace the screen of the Sony Xperia ZL.



TOOLS:

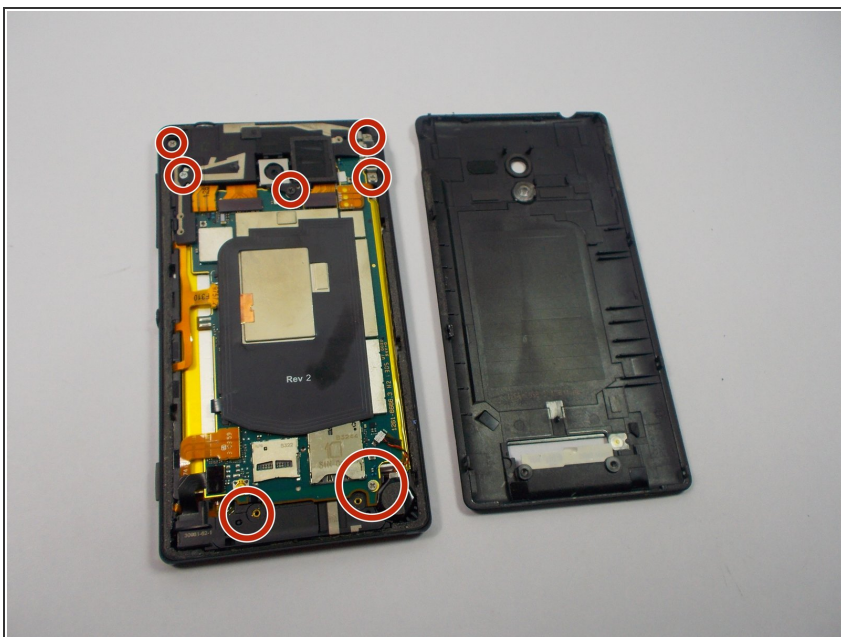
- [JIS #00 Screwdriver](#) (1)
-

Step 1 — Screen



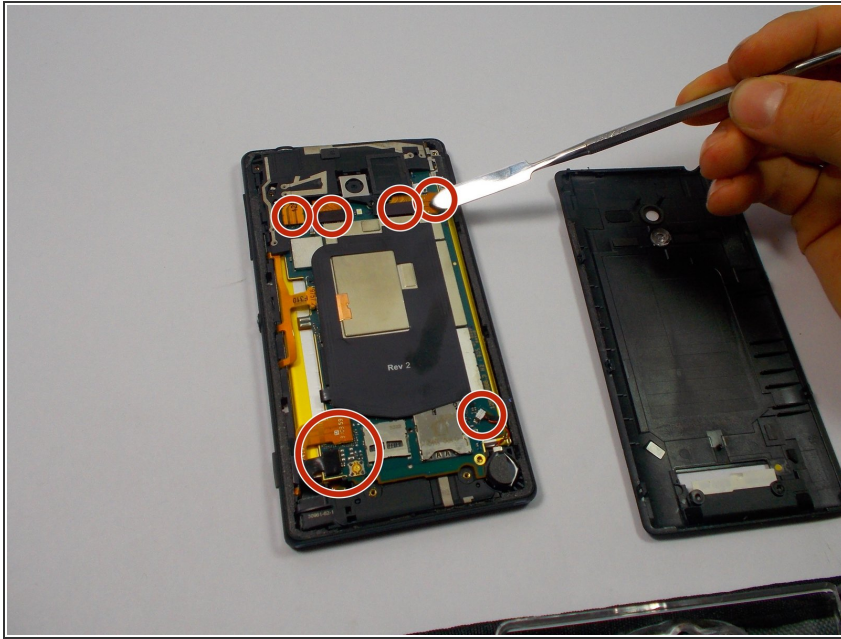
- Open the small cover on the bottom of the rear cover.
- Peel back the sticker under the cover to reveal two screws.
- Remove the two JIS #00 screws from the back of the phone.

Step 2



- Once the two screws have been removed. Take the prying tool to pry off the back cover of the phone. Next take a JIS J00 screwhead and unscrew the 5 screws that are located in the photo.

Step 3



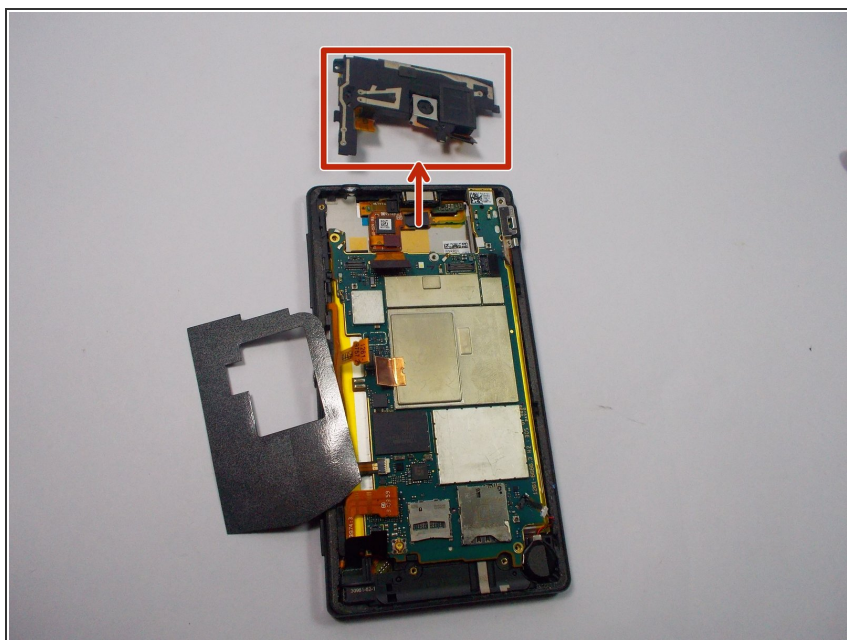
- After the screws have been taken out, disconnect the following connectors using a small plastic prying tool.
- Be careful when prying connectors because a metal prying tool could damage the battery and may cause a fire.

Step 4



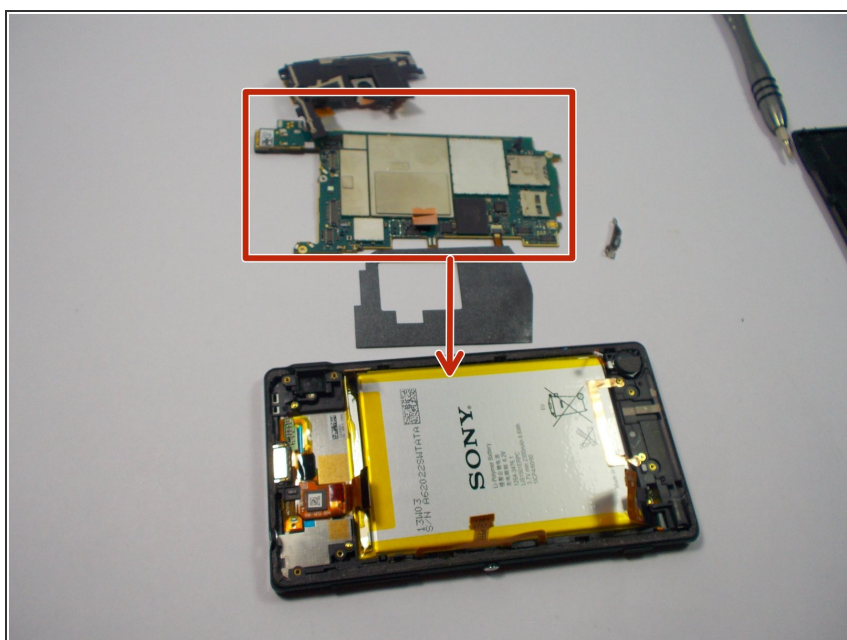
- The last connector is located under the black sticker. Peel back the black sticker and disconnect the last connector.

Step 5



- With all the connectors removed we can safely pry off the camera and all of its components using a plastic prying tool.

Step 6



- Removing the camera and everything that comes with it makes the electrical panel easily come off. Gently pry off the electrical panel.

Step 7



- Take a small plastic prying tool and pry out the battery of the phone. The battery has adhesive tape that connects it to the phone which makes it difficult to pry out. Make sure to try prying from different angles of the battery.

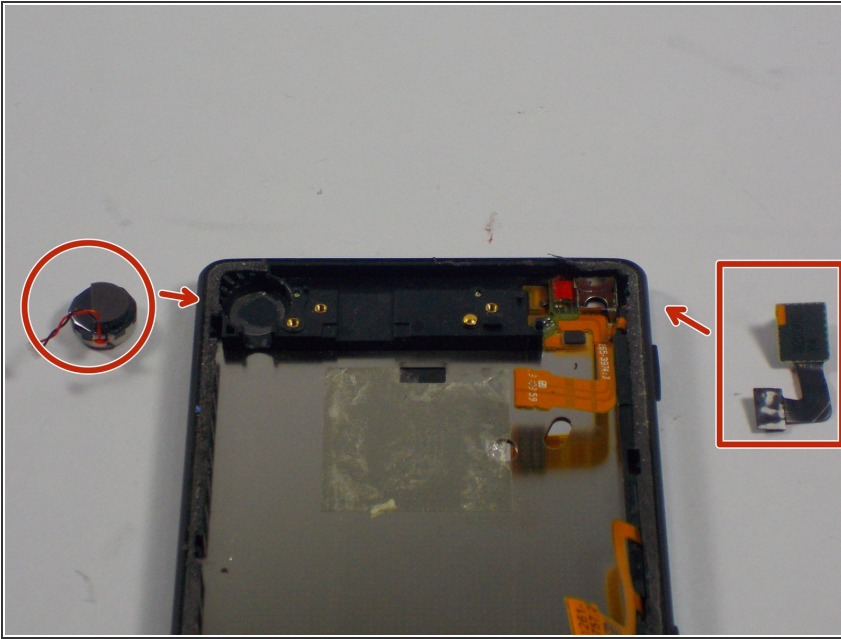
⚠ Make sure to use a plastic prying tool because a metal pry could puncture the battery and cause a fire.

Step 8



- With the battery gone. We next pry off a plastic covering that is located at the top of the phone with the metal spatula.

Step 9



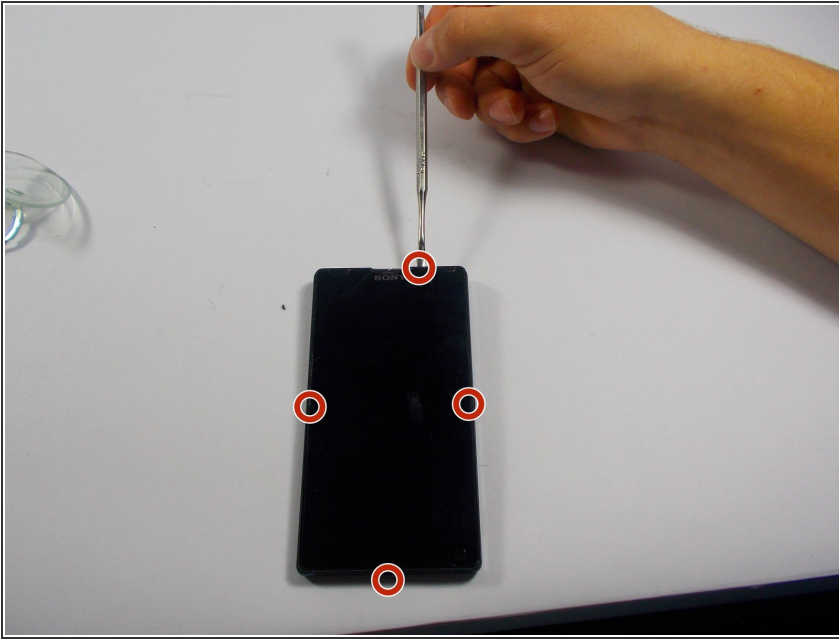
- With the plastic covering gone, the front camera and signal receptor can be taken off the phone. You should use the prying spatula to remove these two items. Be careful with prying out the signal receptor because it has adhesive tape underneath.

Step 10



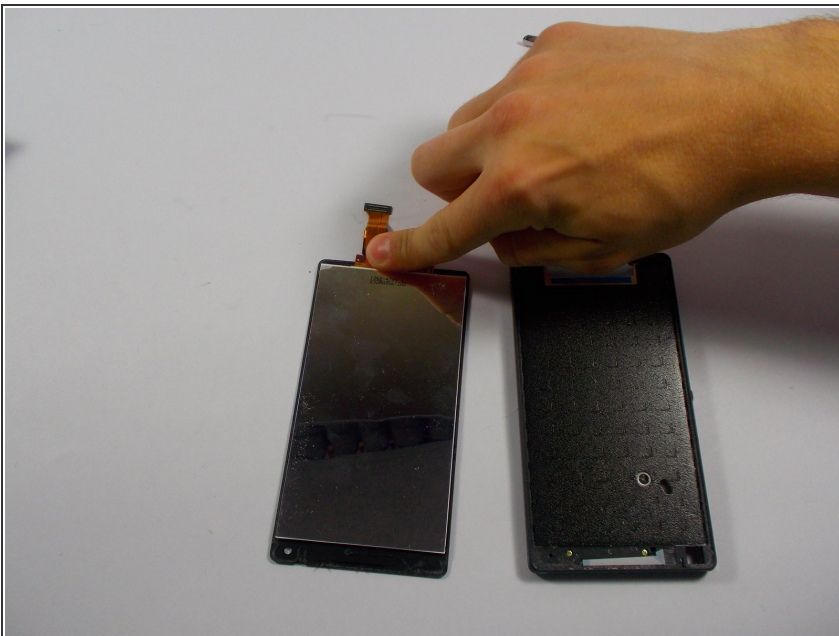
- Next pry off the long plastic piece that goes around the perimeter of the left side of the phone. This is the part that contain the volume and power button. The little component where the camera goes will need to be removed. Be careful when removing the front camera components because there is adhesive tape under it.

Step 11



- Next take a small prying tool to get between the glass screen and the plastic or metal frame around the screen. In most procedures the front screen will crack and break while prying off the screen. Luckily ours didn't, but don't worry if yours does. Just make sure to pry off all the glass.
- A good tip would be to pry into the spots located in the picture.

Step 12



- Once the you get underneath the glass, carefully pry off the adhesive tape around the edges of the phone. Once it has been taken off, carefully remove the screen from the frame and make sure the digitizer that is connected to the screen gets carefully taken out.
- The digitizer will be taken out carefully through a small hole at the top of the base of the phone. This needs to be taken out carefully.

To reassemble your device, follow these instructions in reverse order.