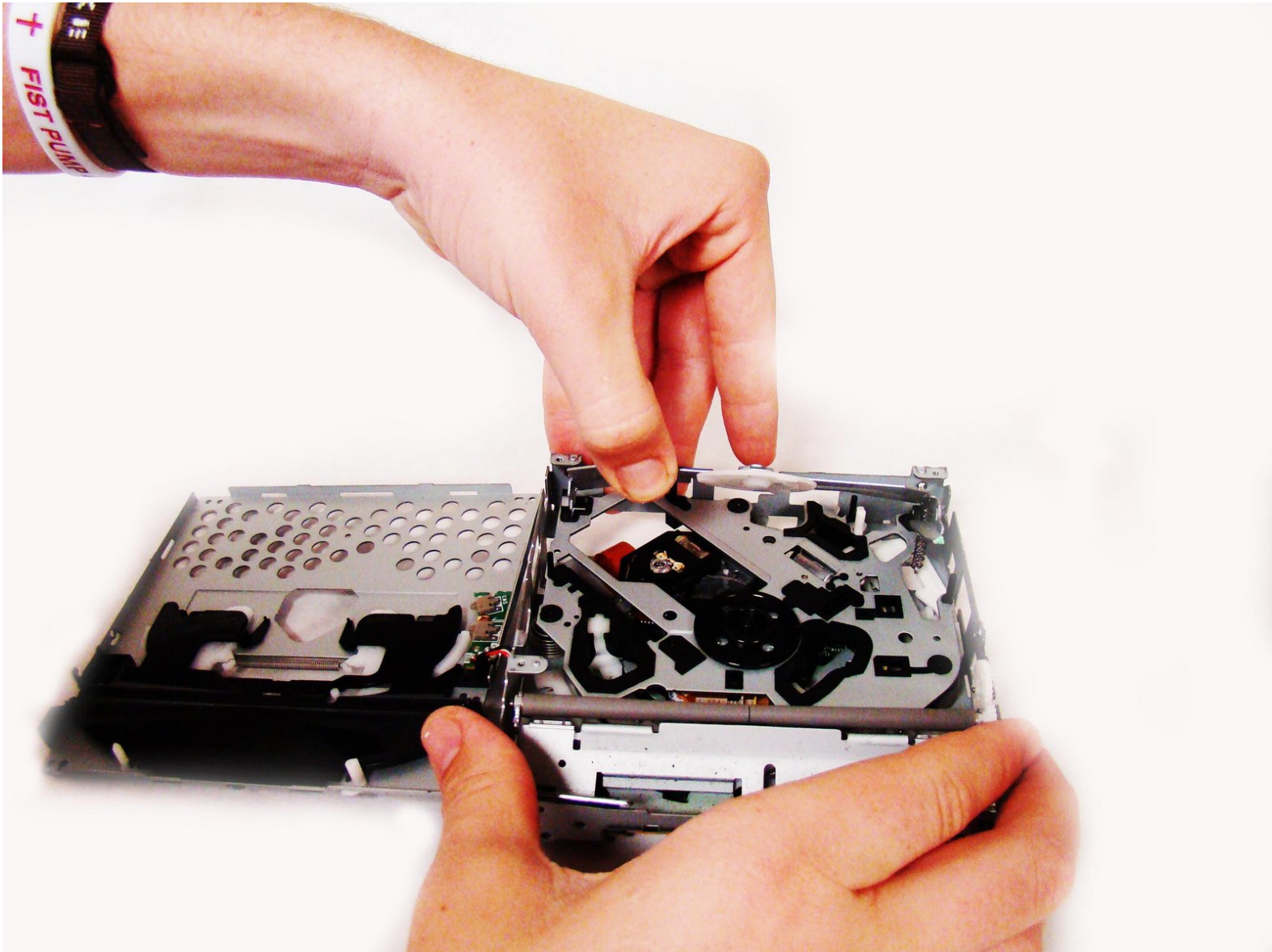




Sony Xplod CDX-MP30 Jammed CD Replacement

Remove a jammed CD from your Xplod.

Written By: Kyle





TOOLS:

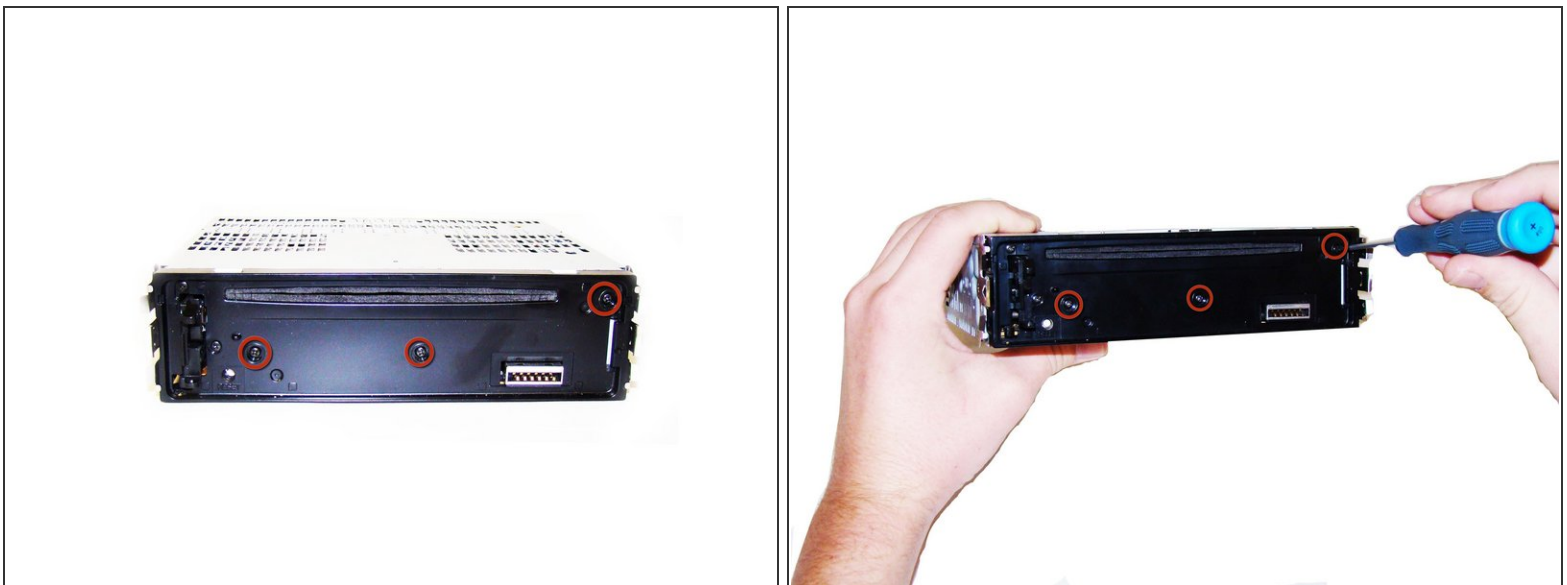
- [Heavy-Duty Spudger](#) (1)
- [Phillips #0 Screwdriver](#) (1)
- [Phillips #1 Screwdriver](#) (1)

Step 1 — Front Panel



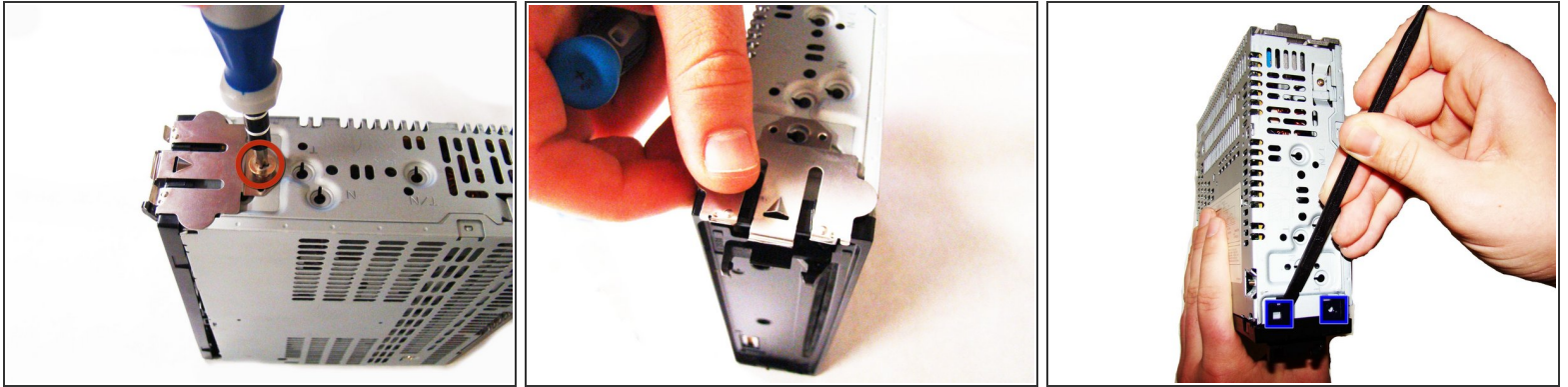
- Press down the release button on the bottom left corner of the face plate.
- Then remove the face plate carefully.

Step 2 — Main Panels



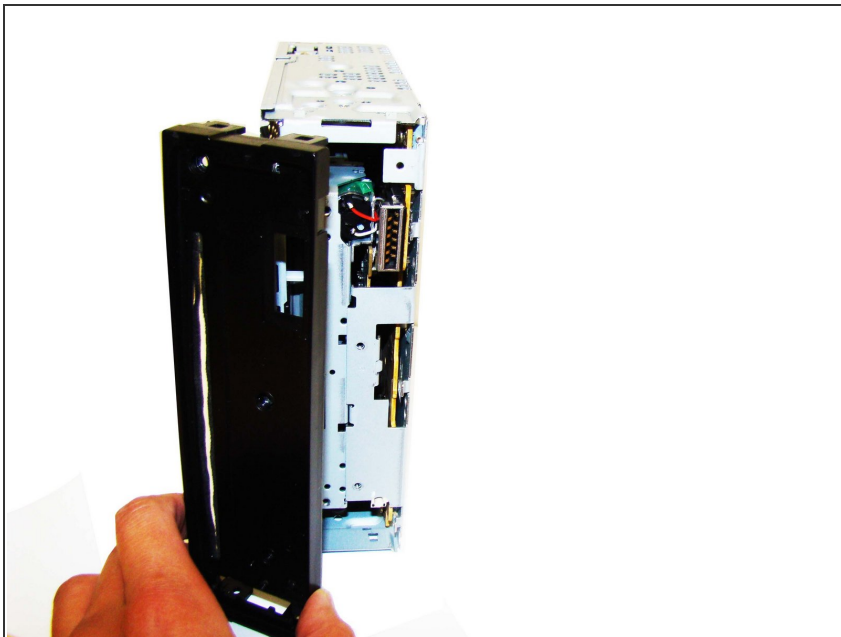
- Using the [Phillips #0 Screwdriver](#), unscrew the 3 screws (length - 7.5mm) on the front of the device.

Step 3



- Using the [Phillips #1 Screwdriver](#), unscrew the 2 thick screws (length - 7.69mm) located on both sides of the stereo.
- Remove side-metal plates gently.
- Use the [Heavy-duty Spudger](#), insert the flat end under each of the black flaps indicated in the picture. Use leverage to pry and pop them loose.

Step 4



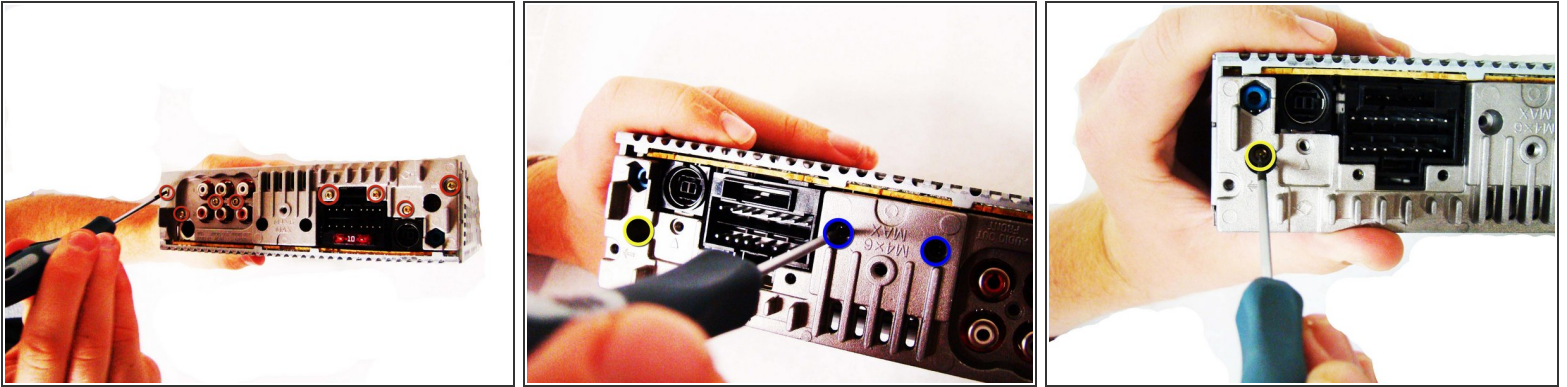
- Remove the black front plate of the stereo.

Step 5



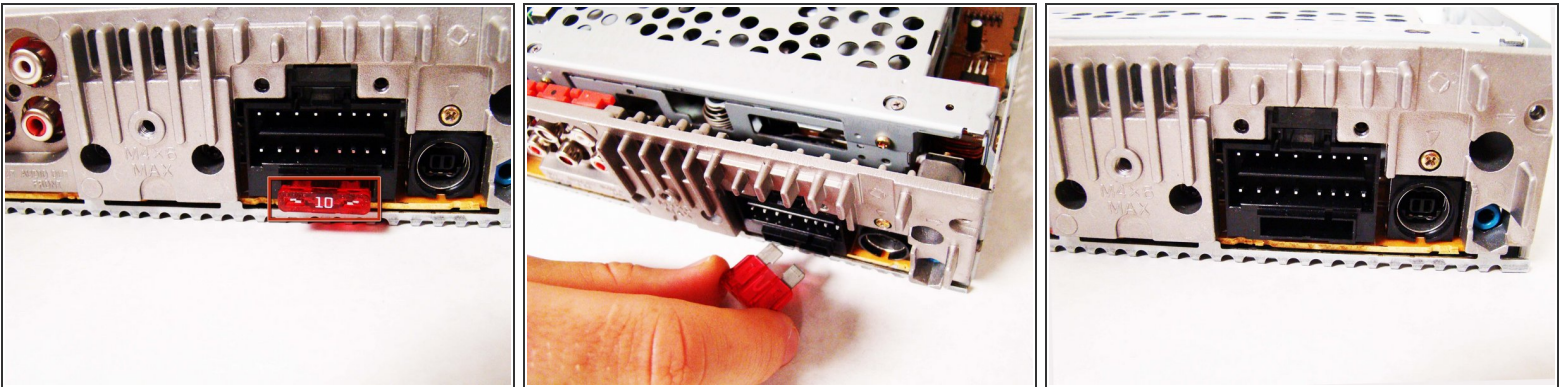
- Using the [Phillips #0 Screwdriver](#), unscrew the 1 gold screw (height - 7.47mm) on the top of the stereo.
- Lift off the top plate.

Step 6



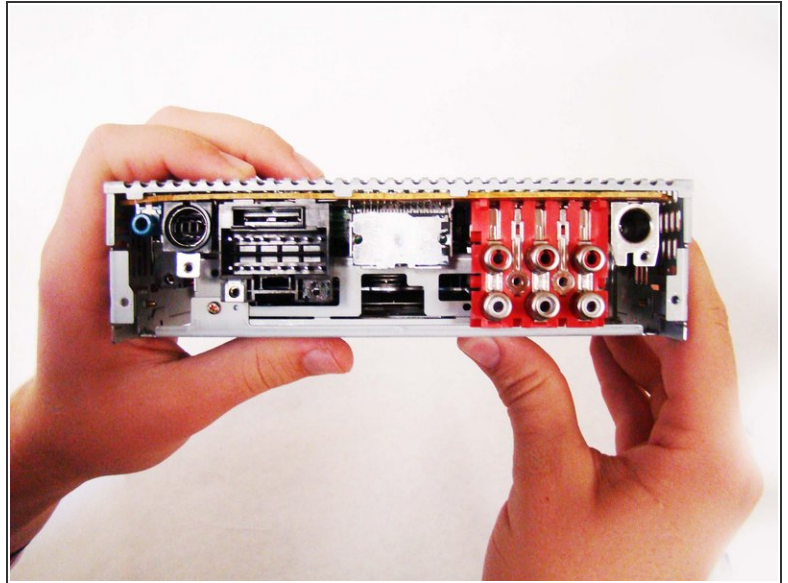
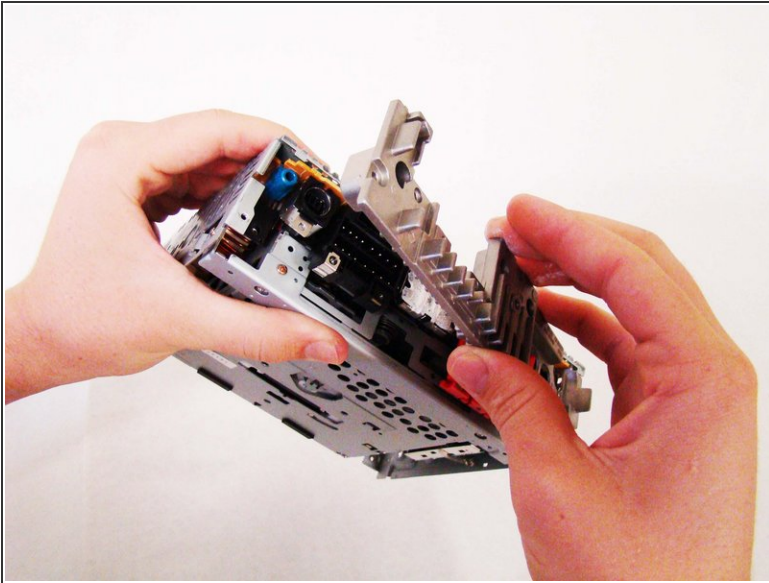
- Using the [Phillips #0 Screwdriver](#), unscrew the 8 gold screws (length - 9.26mm), located on the back side of the stereo.
- Using the [Phillips #0 Screwdriver](#), unscrew the 2 black screws (length - 13.27mm), also located on the back of the stereo.
- Using the [Phillips #0 Screwdriver](#), unscrew the 1 gold screw (length - 9.3mm), located on the bottom of a hole as noted in pictures (2) and (3).

Step 7



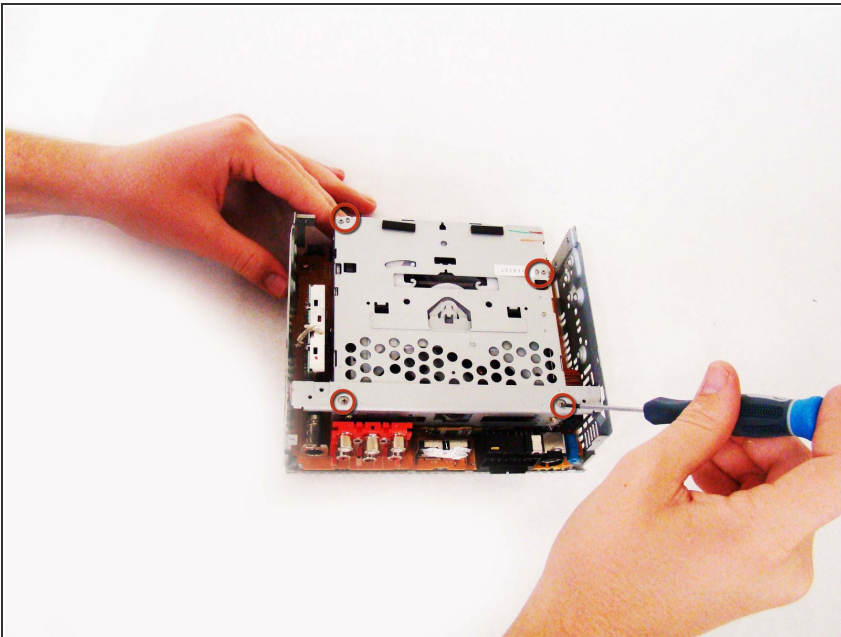
- Carefully pull the fuse out of the back of the stereo.

Step 8



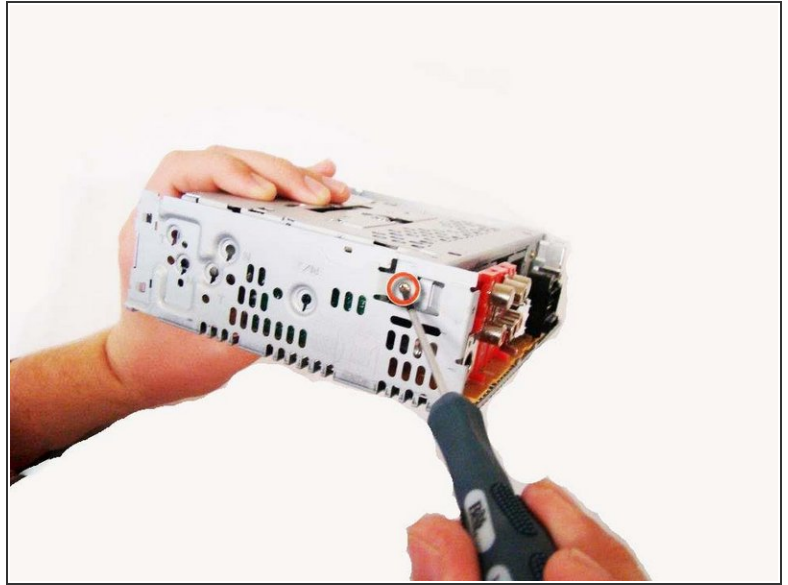
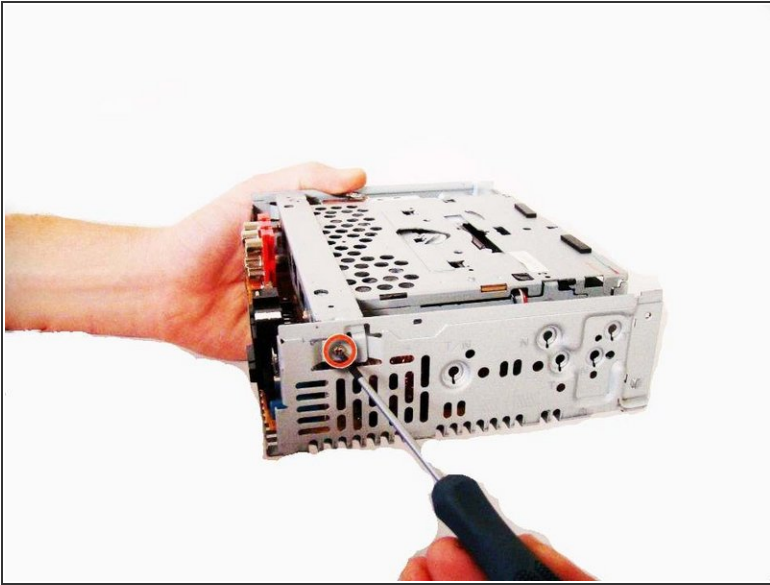
- Firmly grip the body of the stereo and pull off the silver back plate.

Step 9



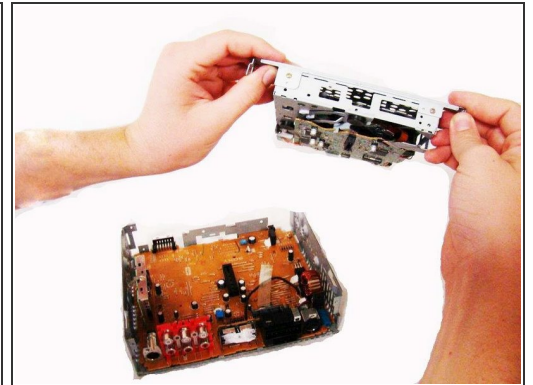
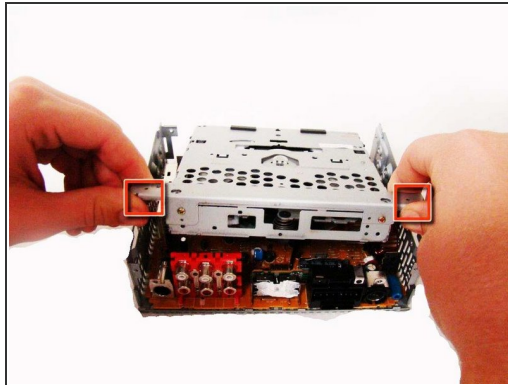
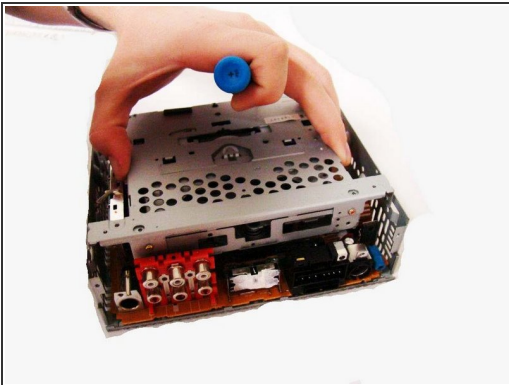
- Using the [Phillips #0 Screwdriver](#), unscrew the 4 dark-silver screws (length - 3.71mm).

Step 10



- Using the [Phillips #0 Screwdriver](#), unscrew the 2 gold screws (length - 7.34mm) found on both sides of the stereo.

Step 11



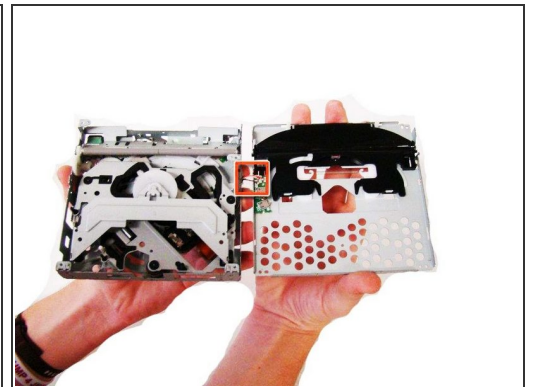
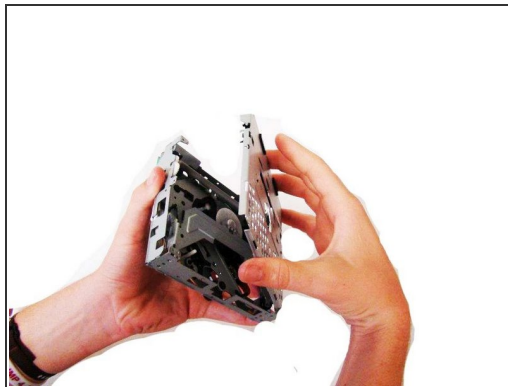
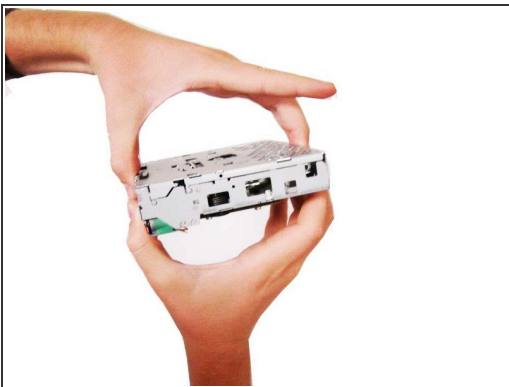
- Grip the top portion of the stereo, where the CD-Drive is located, and gently pull up to release it, but you will not be able to lift it all the way out.
- Grab the two tabs located near the back of the stereo, and gently pull the CD-drive front from the rest of the device.


Step 12 — Jammed CD



- Using the [Phillips #0 Screwdriver](#), unscrew the two gold screws (length - 7.37mm) found on top of the CD Tray.
- Remove the top cover.

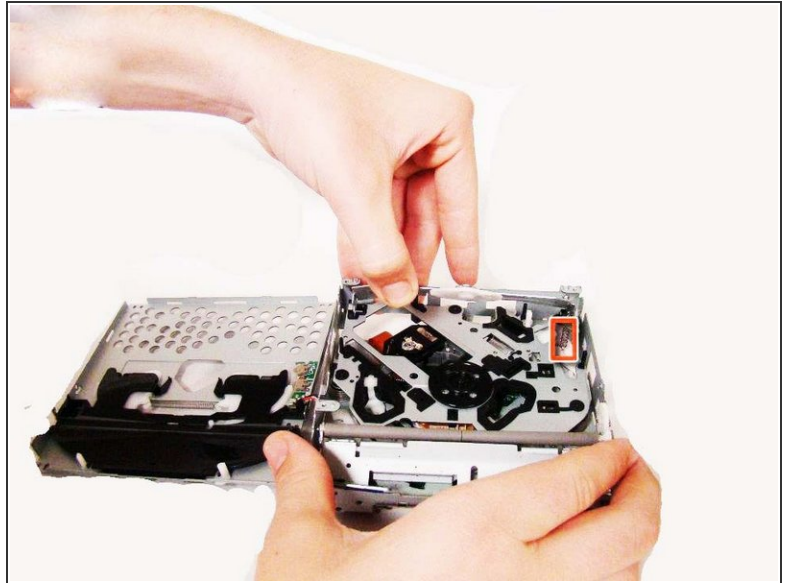
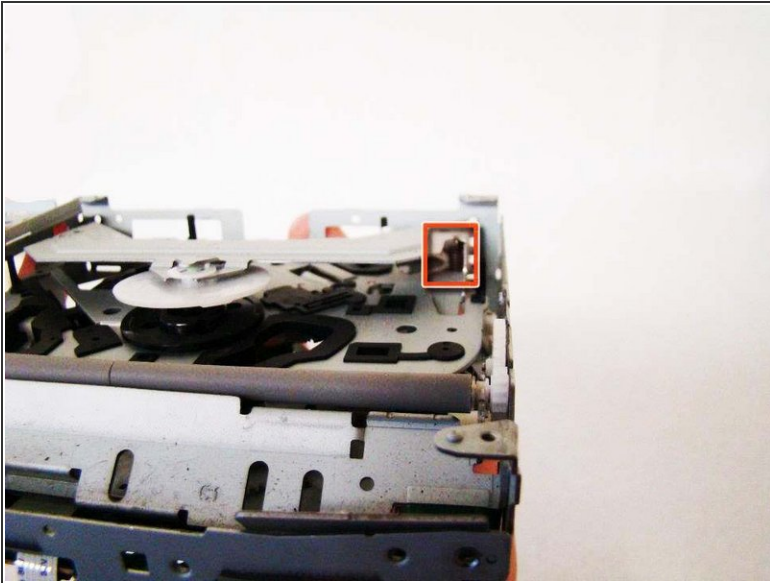
Step 13



 These two pieces will NOT separate completely. They are connected by small wires on one side. So make sure you follow the pictures carefully to know which side to pull up.

- Grip the top of the CD-Drive and pull it up and over, as shown in the pictures.
- Notice the wires that hold the two pieces together.

Step 14



- Pay extra attention to the spring inside the CD-Drive. This will be crucial for the next step.
- ⚠ Slowly pull up the side opposite the spring, but make sure not to over-stretch the spring. This could damage the device.
- While the part is lifted, remove your jammed CD, and you are finished!

To reassemble your device, follow these instructions in reverse order.