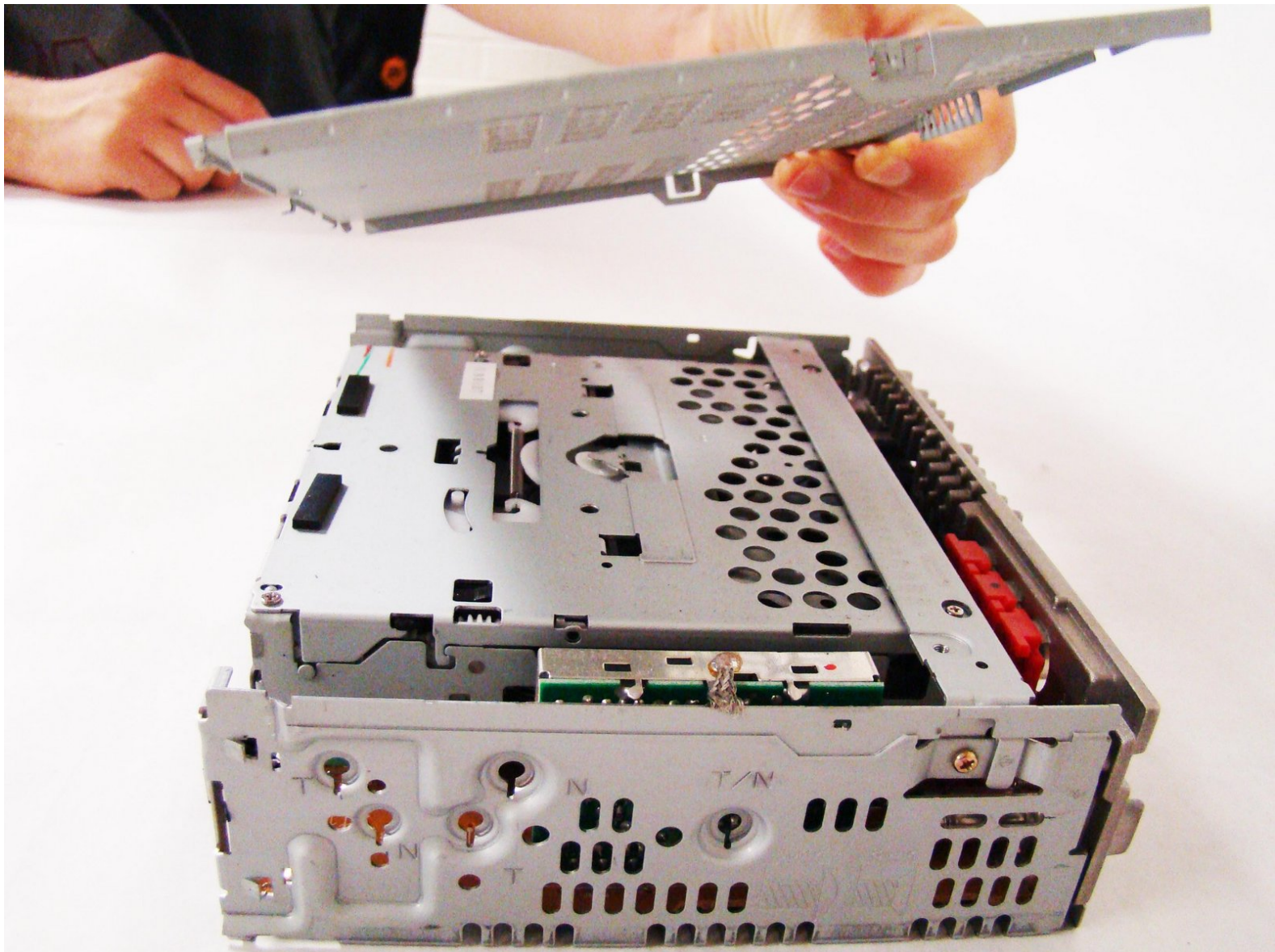




# Sony Xplod CDX-MP30 Main Panels Replacement

Removing a jammed CD from inside the device.

Written By: Chao Chen



---

# INTRODUCTION

Make sure you can explore the Xplod very well.

---



## TOOLS:

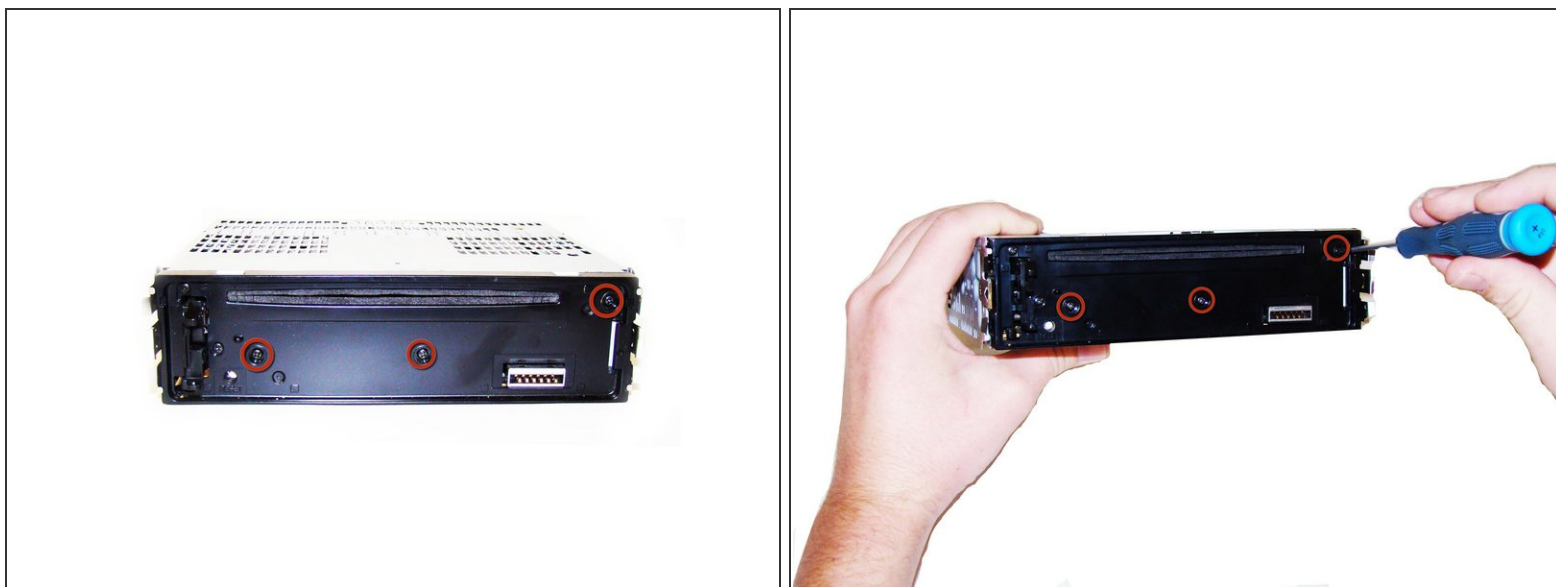
- [Heavy-Duty Spudger](#) (1)
  - [Phillips #0 Screwdriver](#) (1)
  - [Phillips #1 Screwdriver](#) (1)
-

## Step 1 — Front Panel



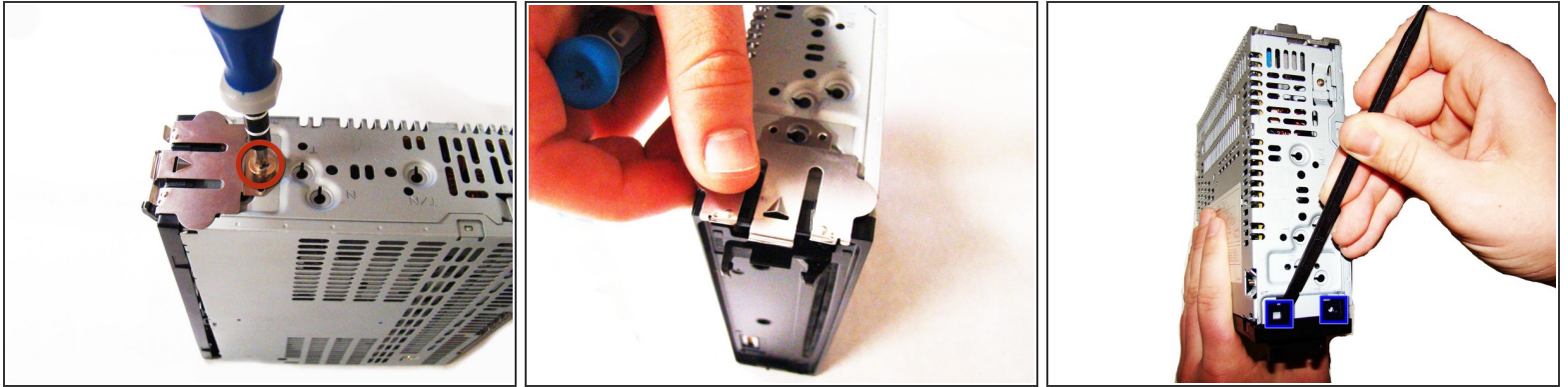
- Press down the release button on the bottom left corner of the face plate.
- Then remove the face plate carefully.

## Step 2 — Main Panels



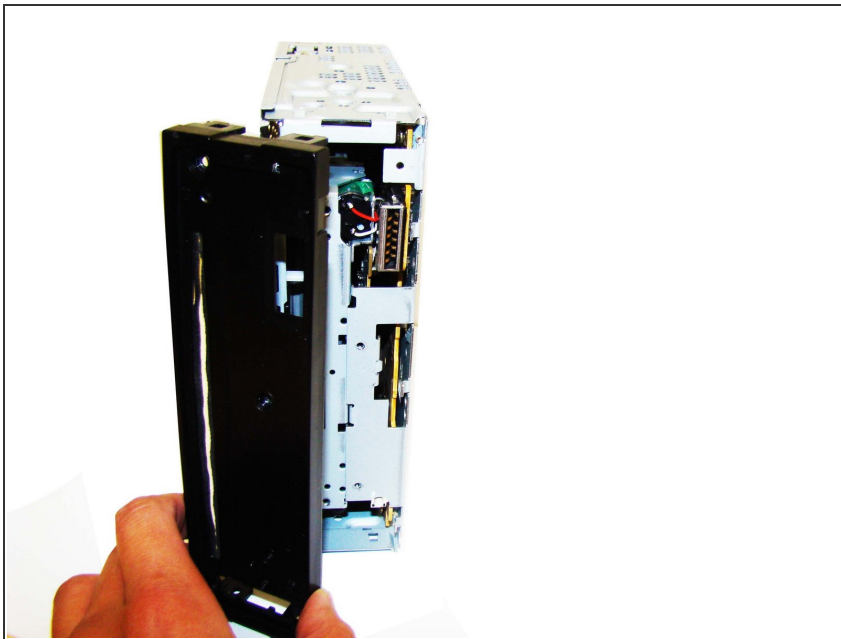
- Using the [Phillips #0 Screwdriver](#), unscrew the 3 screws (length - 7.5mm) on the front of the device.

### Step 3



- Using the [Phillips #1 Screwdriver](#), unscrew the 2 thick screws (length - 7.69mm) located on both sides of the stereo.
- Remove side-metal plates gently.
- Use the [Heavy-duty Spudger](#), insert the flat end under each of the black flaps indicated in the picture. Use leverage to pry and pop them loose.

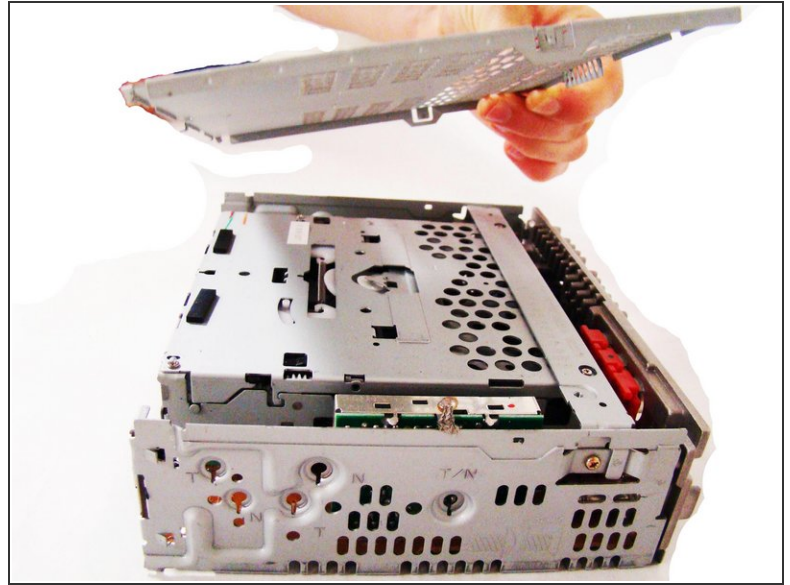
### Step 4



- Remove the black front plate of the stereo.

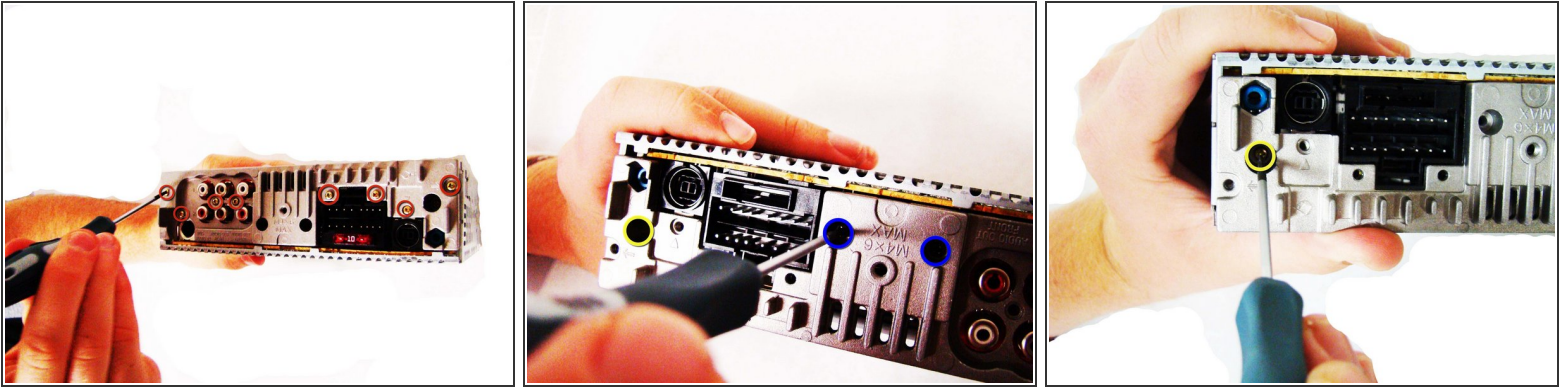


## Step 5



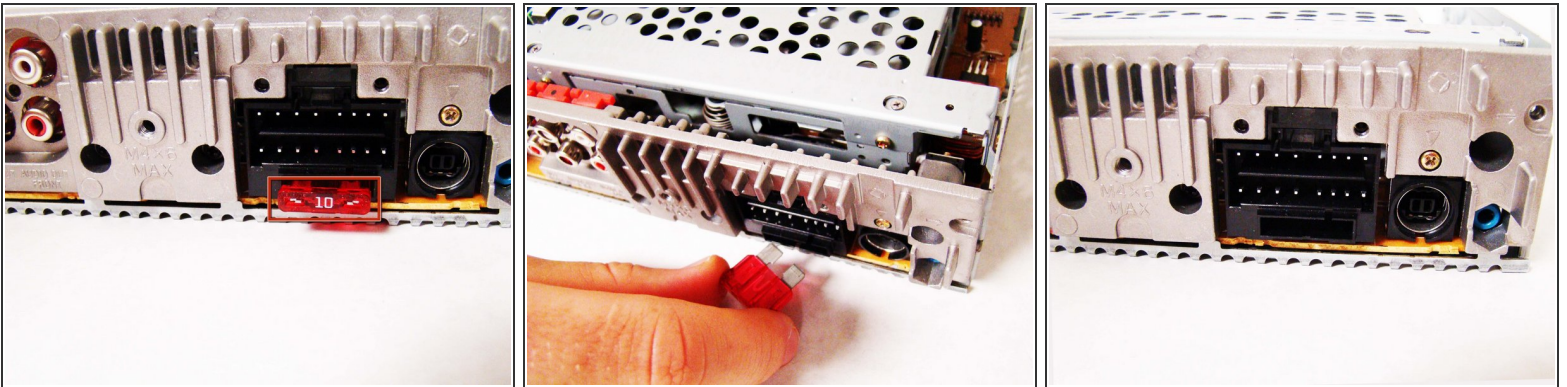
- Using the [Phillips #0 Screwdriver](#), unscrew the 1 gold screw (height - 7.47mm) on the top of the stereo.
- Lift off the top plate.

## Step 6



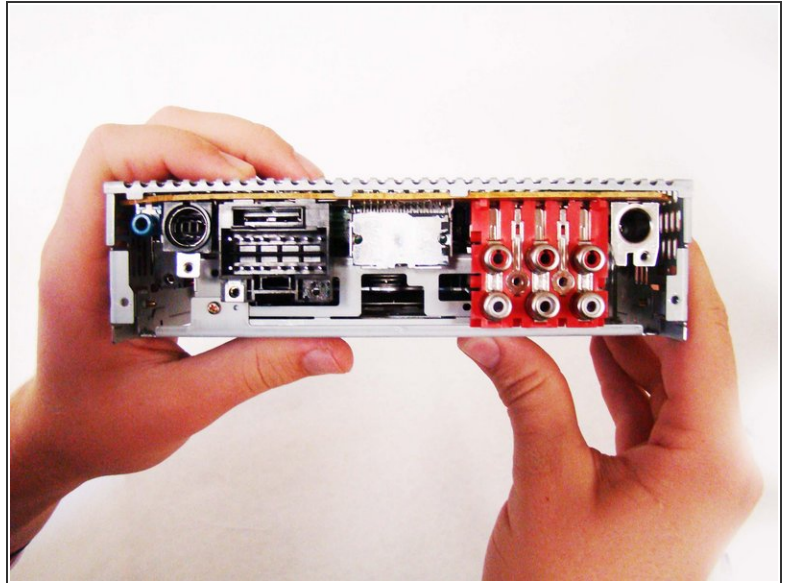
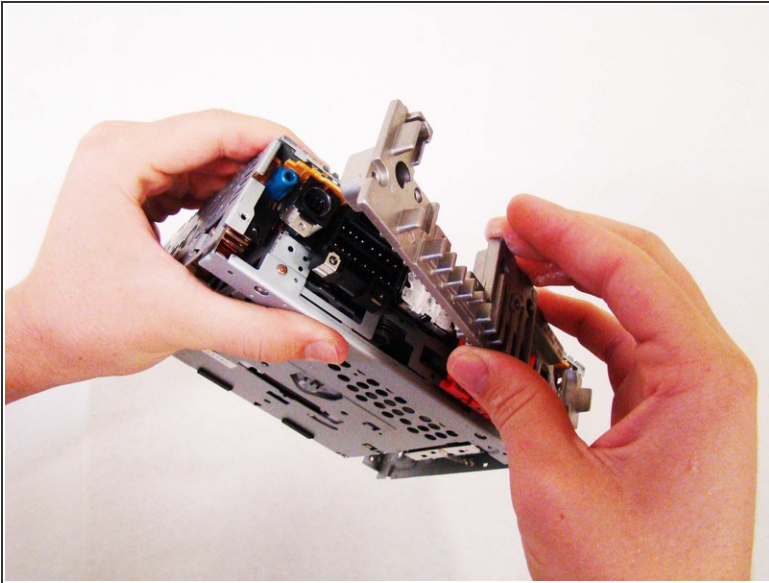
- Using the [Phillips #0 Screwdriver](#), unscrew the 8 gold screws (length - 9.26mm), located on the back side of the stereo.
- Using the [Phillips #0 Screwdriver](#), unscrew the 2 black screws (length - 13.27mm), also located on the back of the stereo.
- Using the [Phillips #0 Screwdriver](#), unscrew the 1 gold screw (length - 9.3mm), located on the bottom of a hole as noted in pictures (2) and (3).

## Step 7



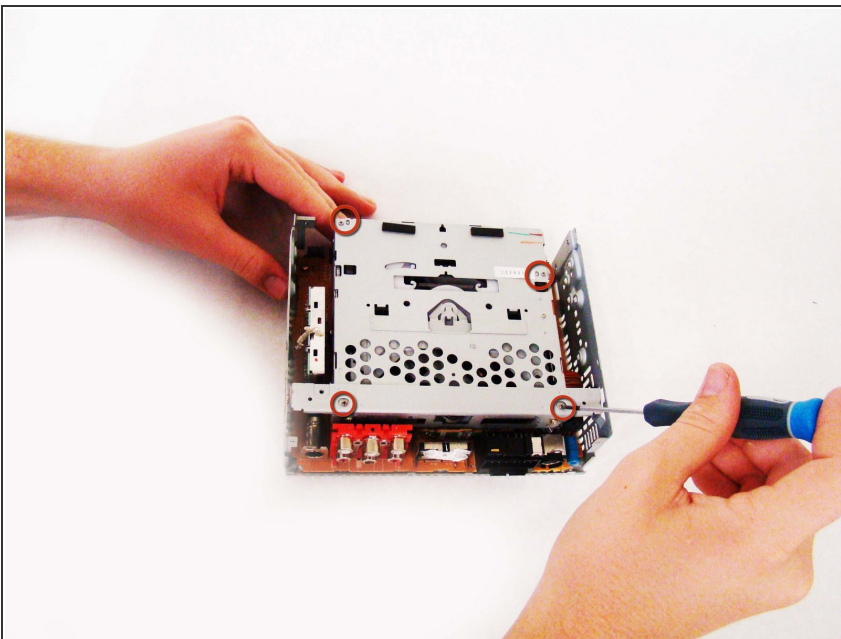
- Carefully pull the fuse out of the back of the stereo.

## Step 8



- Firmly grip the body of the stereo and pull off the silver back plate.

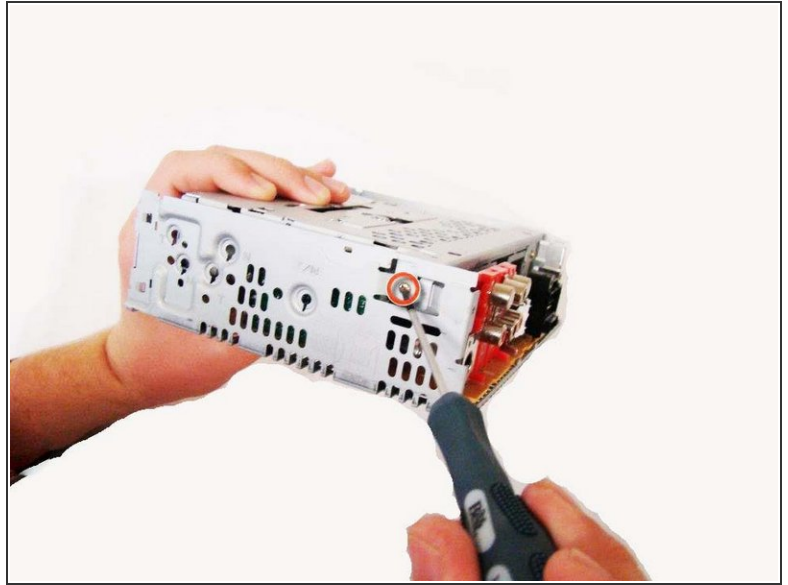
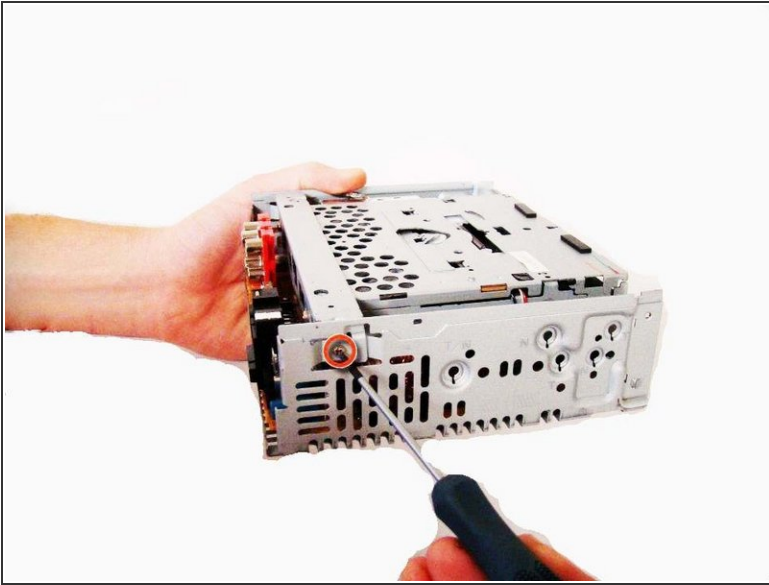
## Step 9



- Using the [Phillips #0 Screwdriver](#), unscrew the 4 dark-silver screws (length - 3.71mm).

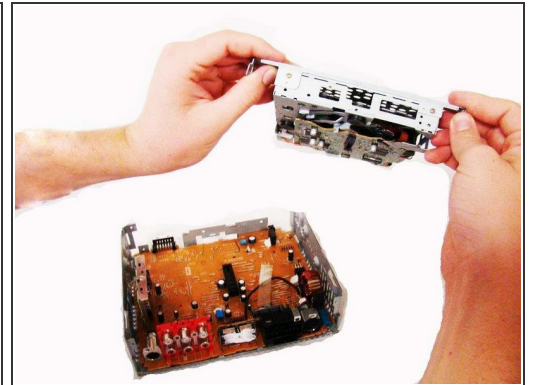
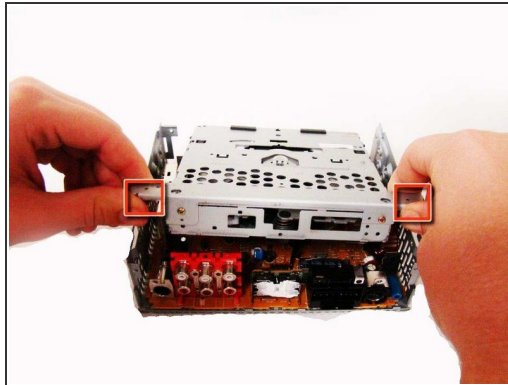
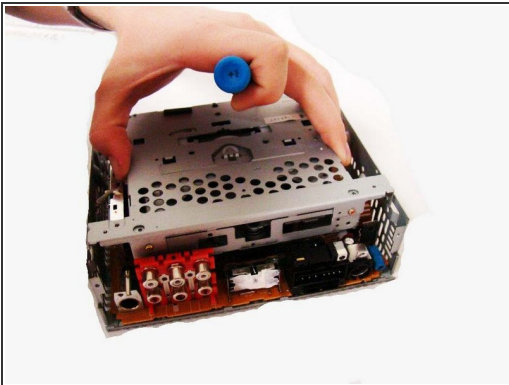


## Step 10



- Using the [Phillips #0 Screwdriver](#), unscrew the 2 gold screws (length - 7.34mm) found on both sides of the stereo.

## Step 11



- Grip the top portion of the stereo, where the CD-Drive is located, and gently pull up to release it, but you will not be able to lift it all the way out.
- Grab the two tabs located near the back of the stereo, and gently pull the CD-drive front the rest of the device.

To reassemble your device, follow these instructions in reverse order.

This document was generated on 2019-09-21 01:18:49 PM (MST).



