



Sonyo pro extraX multiverse projector power supply Replacement

removing and replacing a defective power supply

Written By: Matt Block

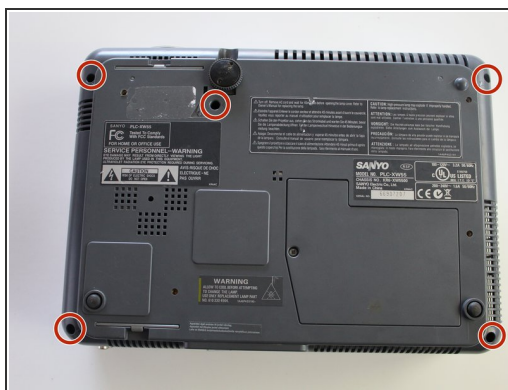




TOOLS:

- [Phillips #1 Screwdriver](#) (1)
 - [Phillips #2 Screwdriver](#) (1)
 - [Spudger](#) (1)
-

Step 1 — Bottom Panel



- Place the projector upside-down to access the screws on the bottom.
- Remove five 9mm long screws with a Phillips 1 screwdriver.

Step 2



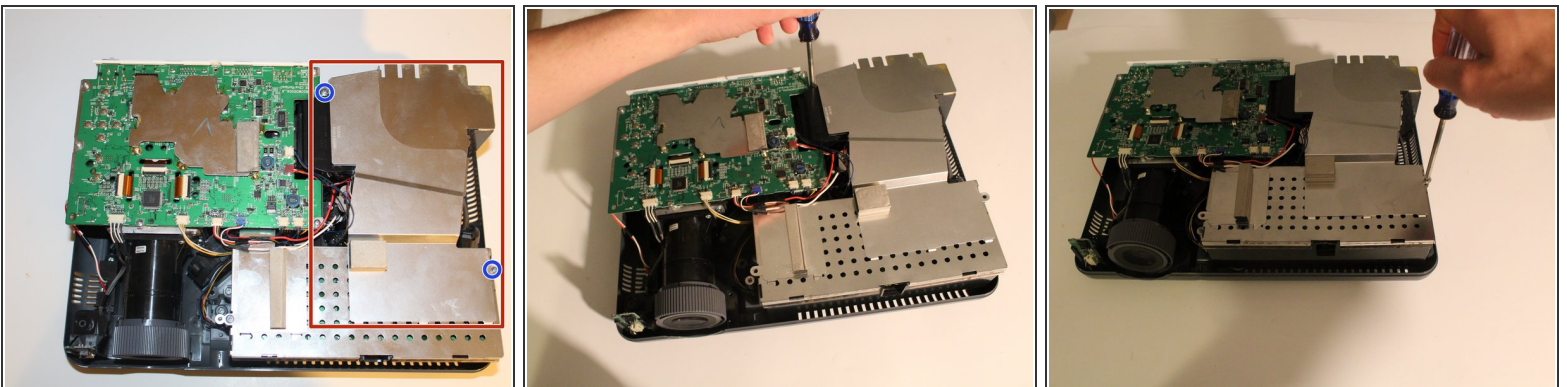
- Turn the projector on its side.
- Remove one 9mm Phillips 1 screw

Step 3



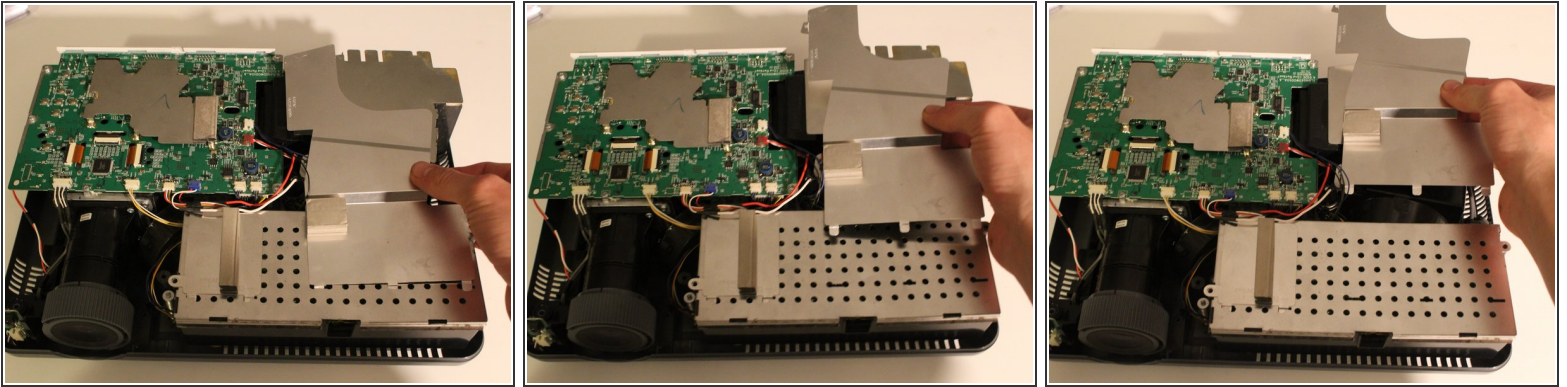
- Place the projector right side up and lift the top panel up and put it to the side.

Step 4



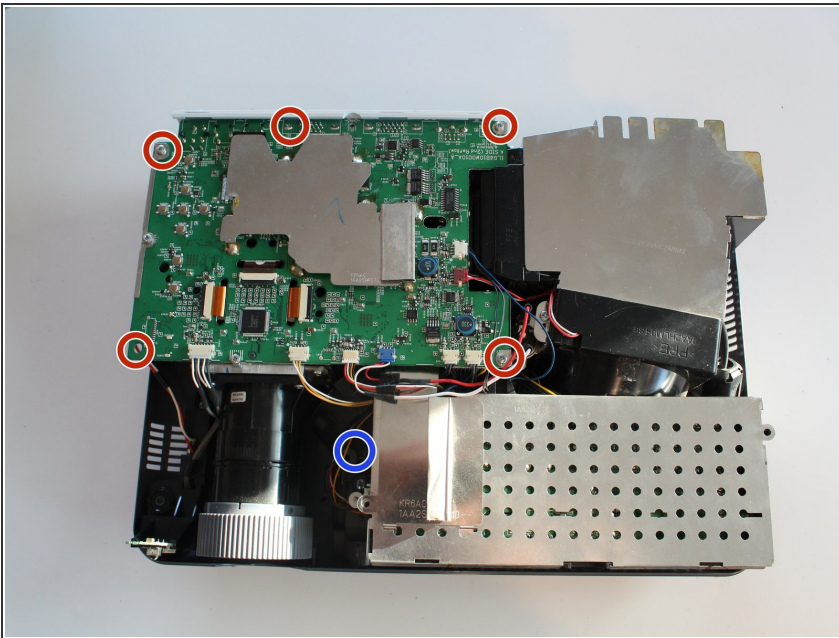
- Locate the metal panel on the right hand side.
- Remove two 7mm screws

Step 5



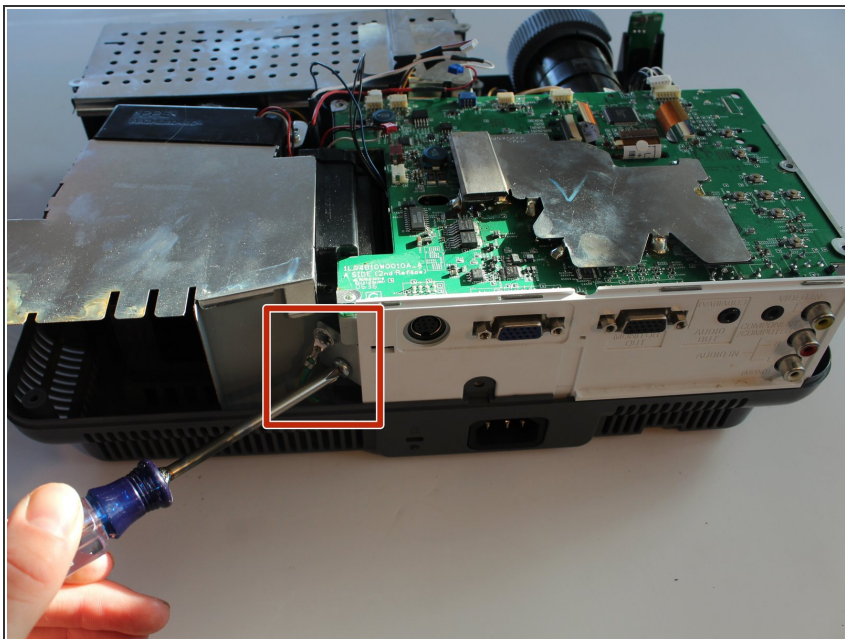
- Lift the panel up slightly and forward to remove it completely.

Step 6 — Motherboard



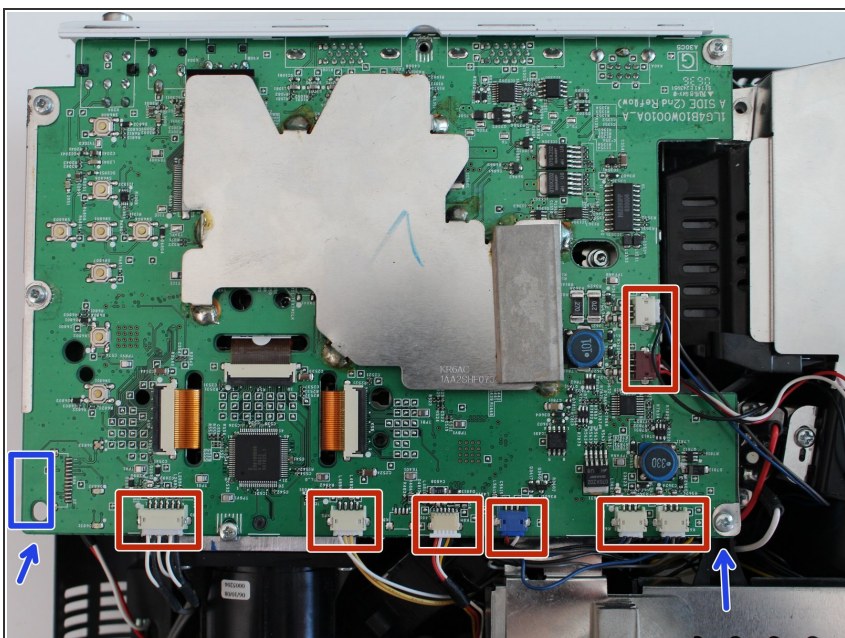
- Remove five 9mm screws with a Phillips 1 screwdriver
- Remove one 11mm screws with a Phillips one screwdriver

Step 7



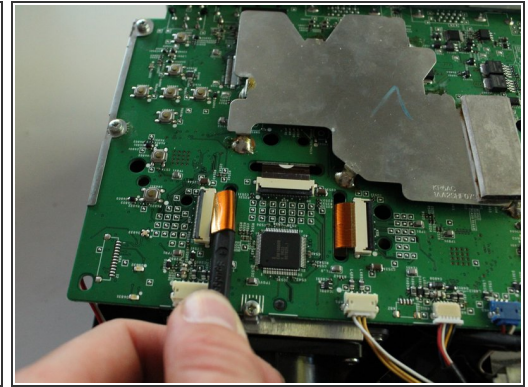
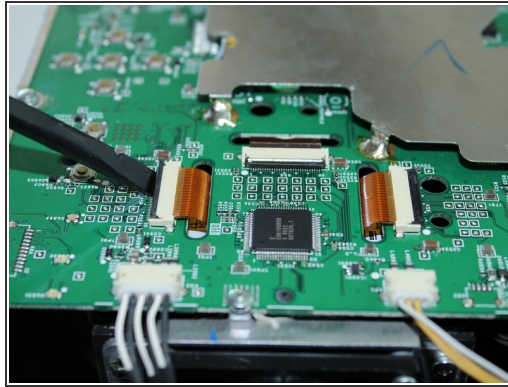
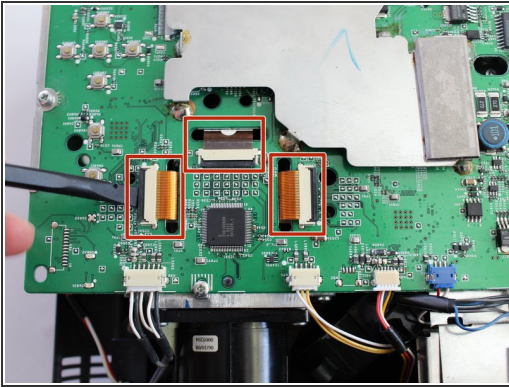
- Remove two 5mm screws with a Phillips 2 screwdriver

Step 8



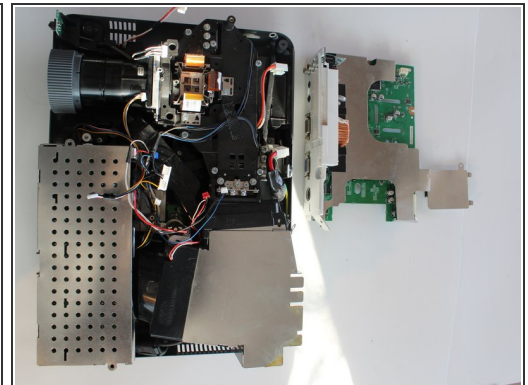
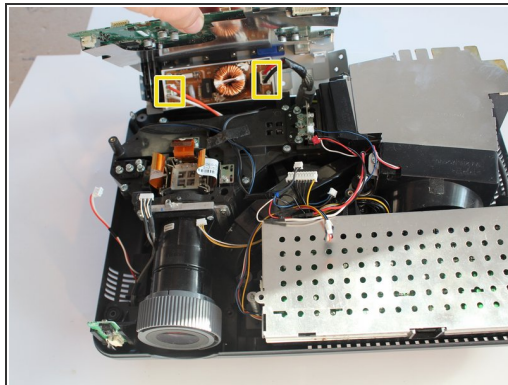
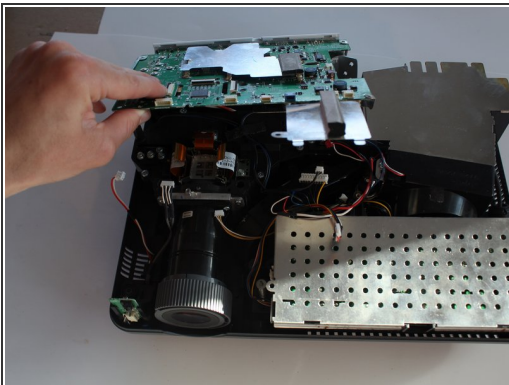
- Remove all clips from mother board.
- There are two additional clips underneath the mother board that need to be disconnected as well.

Step 9 — ribbon cables



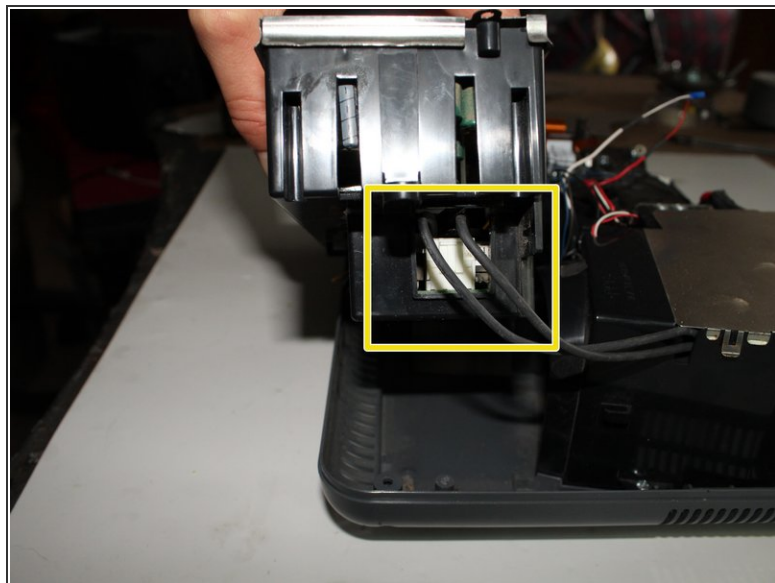
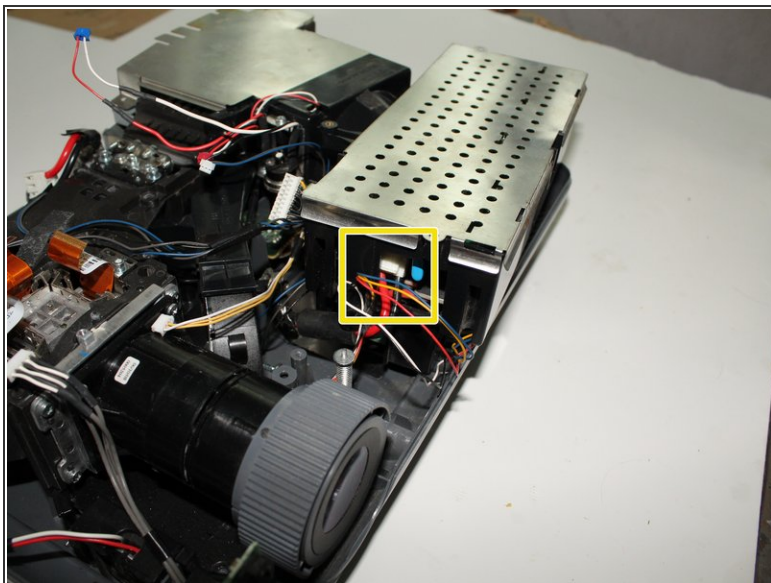
- To remove the ribbon cables, lift up on the black hinge with a fingernail or the tip of your spudger.
- Now, use a spudger or a barbecue skewer to lift the cable out.

Step 10



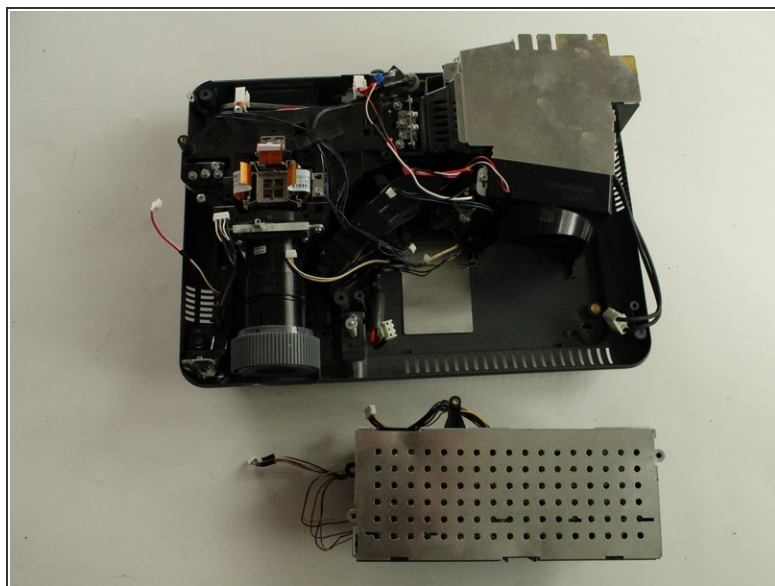
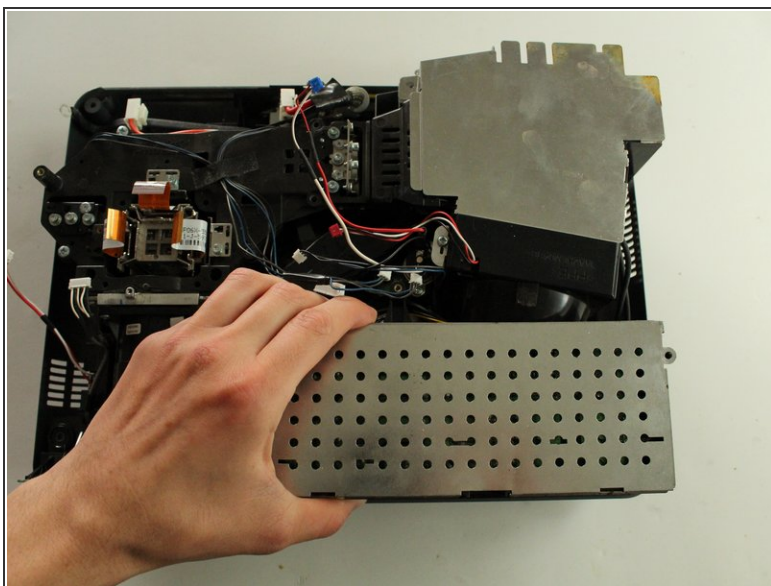
- Lift the board up slowly, making sure there are no snagged cables.
- Unplug the two power cables coming into the board.
- Remove the motherboard from the device.

Step 11



- Remove two clips by pinching and pulling up on the connector.

Step 12



- You can now remove the power supply.

To reassemble your device, follow these instructions in reverse order.