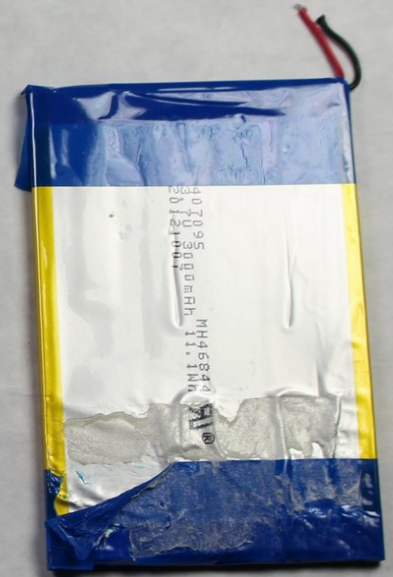




# Sophix TAB-730g Battery Replacement

Does the battery not hold a charge? This guide will walk you through the simple steps to access and replace your Sophix-TAB 730g battery.

Written By: JT Hiquet



# INTRODUCTION

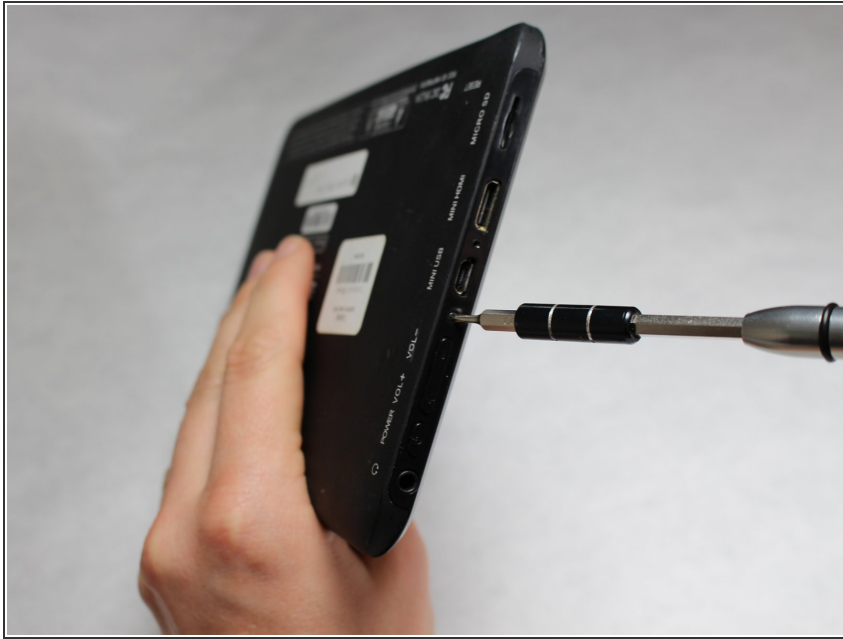
This guide is to show how you would replace your battery if it is malfunctioning. This guide will show you how to take off the back cover of your tablet, disconnect the wires from the logic board, and remove the battery from the tablet.



## TOOLS:

- [Phillips #000 Screwdriver](#) (1)
  - [Soldering Iron](#) (1)
  - [Heavy-Duty Spudger](#) (1)
-

## Step 1 — Battery



- ❗ Remove the back cover to gain access to the mother board.
- Unscrew, with a 000 Philip's screwdriver, the 3.547 mm long screw located at the bottom of your tablet.

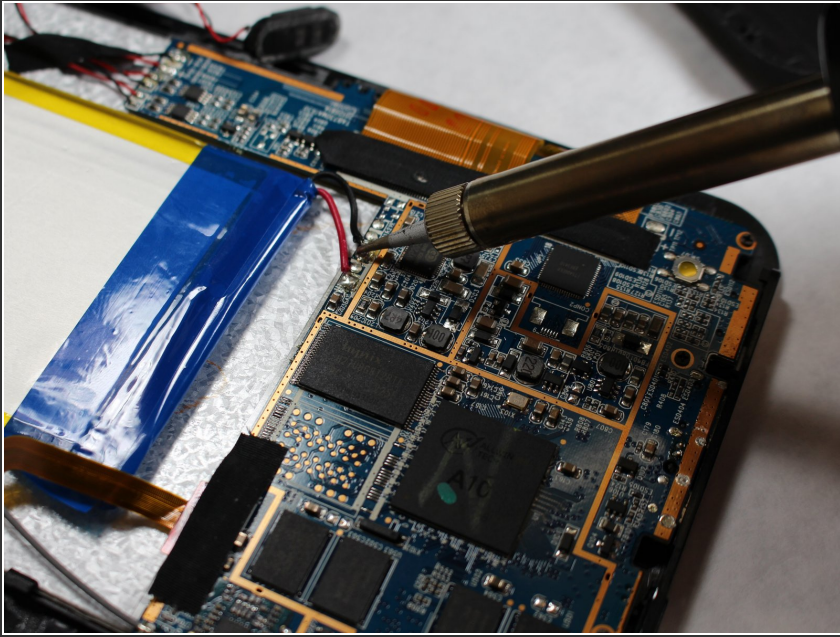
## Step 2



- Firmly slide the cover in the direction indicated by the arrow, away from the ports, with your hand to remove the back cover.

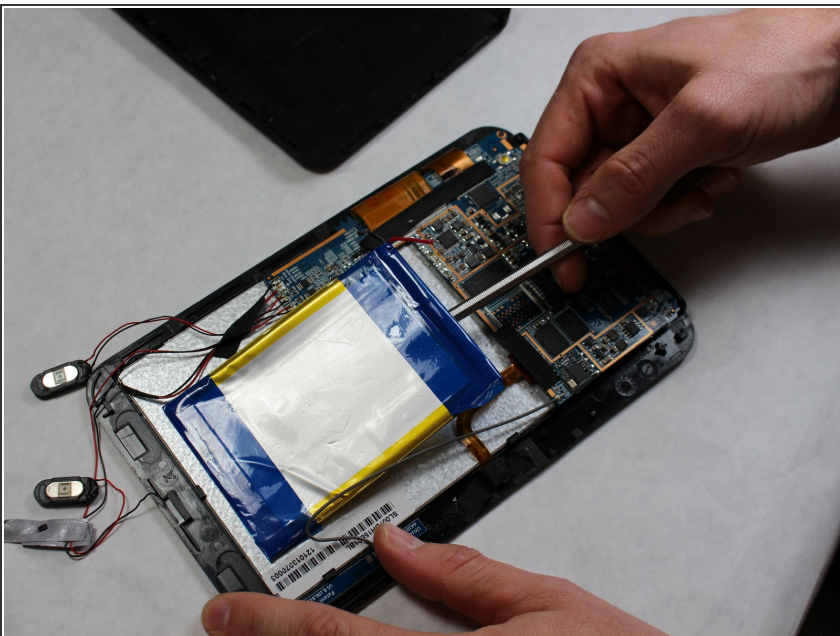


### Step 3



- [Desolder](#) the two wires connecting the battery to the mother board.

### Step 4



- Gently pry the battery off the back of the device using some force.
- ⓘ There is adhesive keeping the battery attached so a decent amount of force may need to be applied.

To reassemble your device, follow these instructions in reverse order.