



# SoundBot SB571 Battery Replacement

This guide will show how to replace the battery. The battery is an important component that makes the speaker work.

Written By: Yana



## INTRODUCTION

Replacing the battery requires opening up the speaker and unscrewing the bottom and upper part of the speaker. You will need a Phillips screw driver, blue plastic opening tool and a new battery.



### TOOLS:

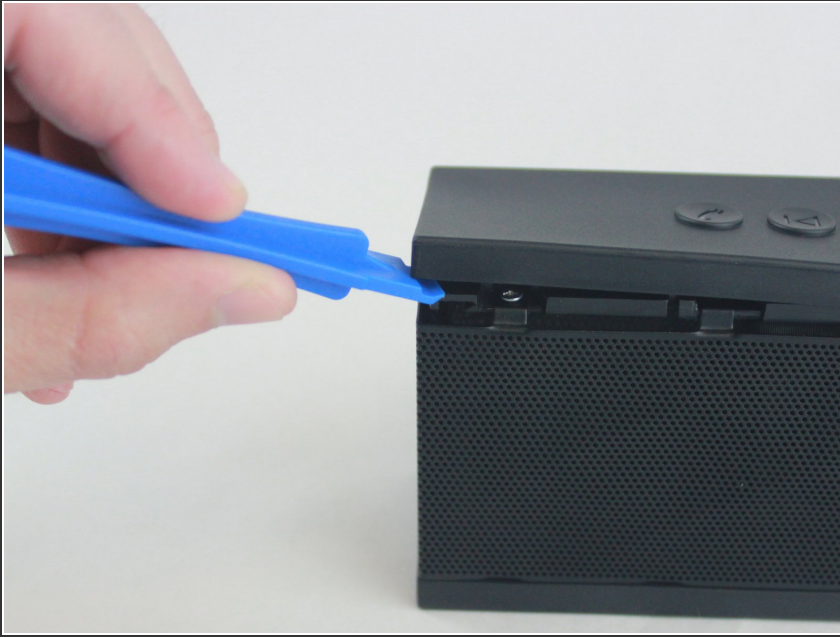
- [iFixit Opening Tools](#) (1)
- [64 Bit Driver Kit](#) (1)



### PARTS:

- [Rechargeable 3.7V 1000mAh lithium-ion battery](#) (1)

## Step 1 — Battery



- ✦ Before disassembling the speaker, make sure it is powered off.
- Place the speaker on a flat surface.
- Take your blue plastic opening tool and remove the outside cover.

## Step 2



- Reorient the speaker so the black panel is facing up.
- Remove the 4, 0.9 cm screws from the back panel using a Phillips PH1 screwdriver.
- Now remove the plate.

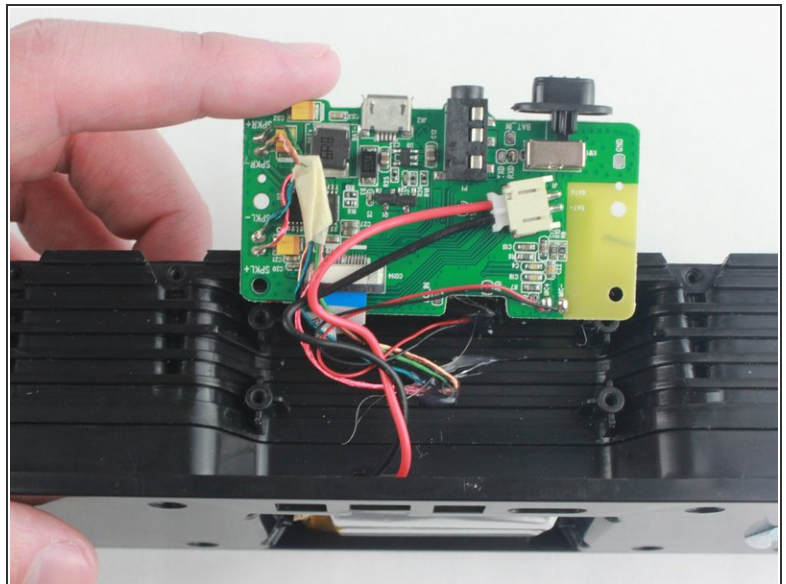


### Step 3



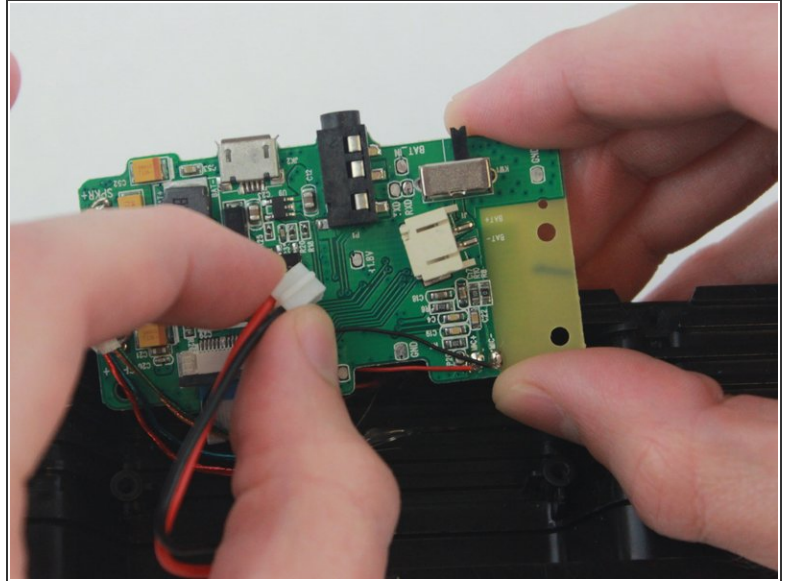
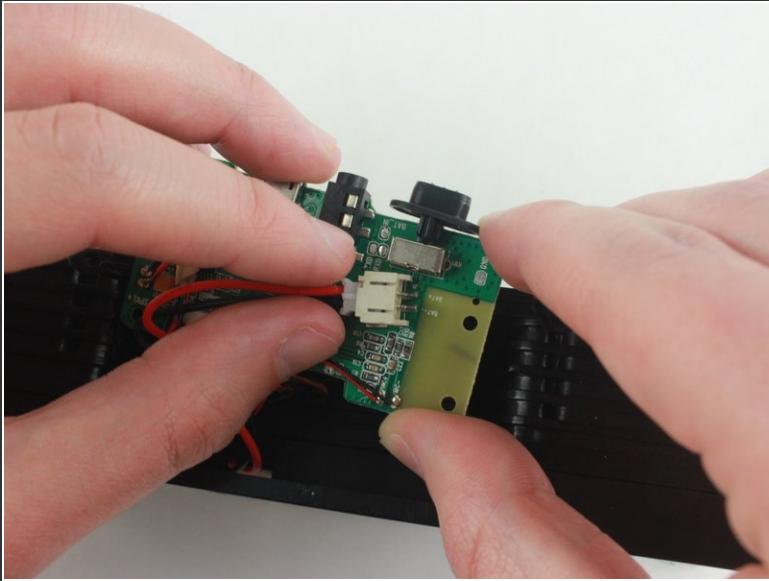
- Reorient the speaker so the bottom is facing up.
- Remove the 4, 0.9cm screws from the bottom using a Phillips PH0 screw driver.
- Now open the plate.

### Step 4



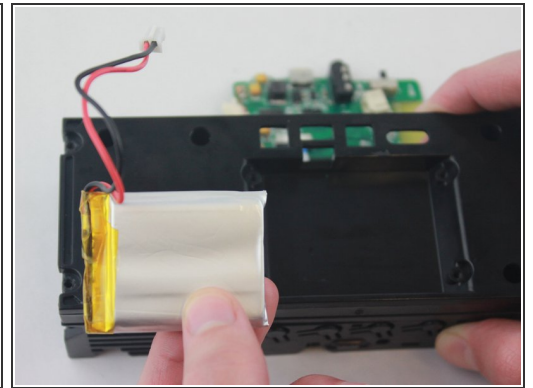
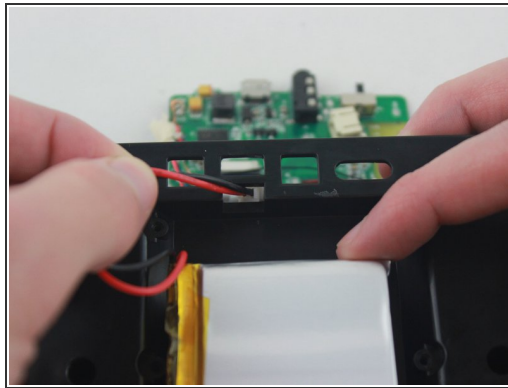
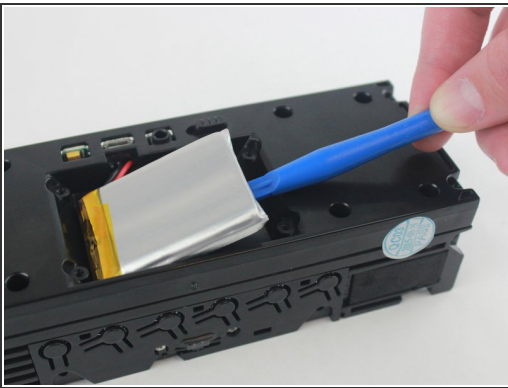
- With the bottom plate removed now use the blue plastic opening tool to lift up the circuit board from the device.

## Step 5



- Disconnect the battery wires from the circuit board.

## Step 6



- Reorient the speaker so the back side is facing up.
- Now that the battery wires have been disconnected, use a blue plastic tool to release the battery from the adhesive strip.
- Loop the battery wires through the opening in the back plate.
- The battery and its connective wires have been completely removed from the speaker.

To reassemble your device, follow these instructions in reverse order.