



# Speaker Bose SoundDock Motherboard Replacement

The Bose SoundDock Portable iPod Connector needs replacing over time. This guide will show the simple steps to replacing a faulty iPod connector. Replacing the iPod connector is a simple task outlined in these steps.

Written By: Dalton Alexandre



## INTRODUCTION

Do you enjoy great sounds, but can't connect your iPod to your dock? Replace your motherboard with this easy-to-use guide. Clear some space though, you'll have a few small parts you don't want to lose.



### TOOLS:

- [Phillips #2 Screwdriver](#) (1)
- [1.5 mm Flathead Screwdriver](#) (1)
- [iFixit Opening Tools](#) (1)



### PARTS:

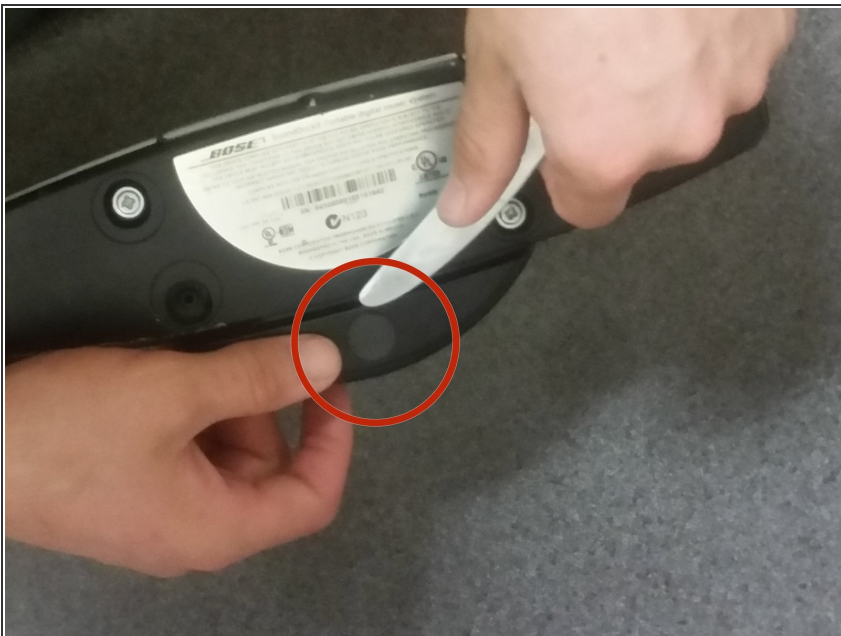
- [Bose SoundDock Sound Processor](#) (1)

## Step 1 — Bose SoundDock Motherboard



- Remove the battery by pressing your finger down on the center button and twisting it counter-clockwise.
- Remove battery and set it aside.

## Step 2



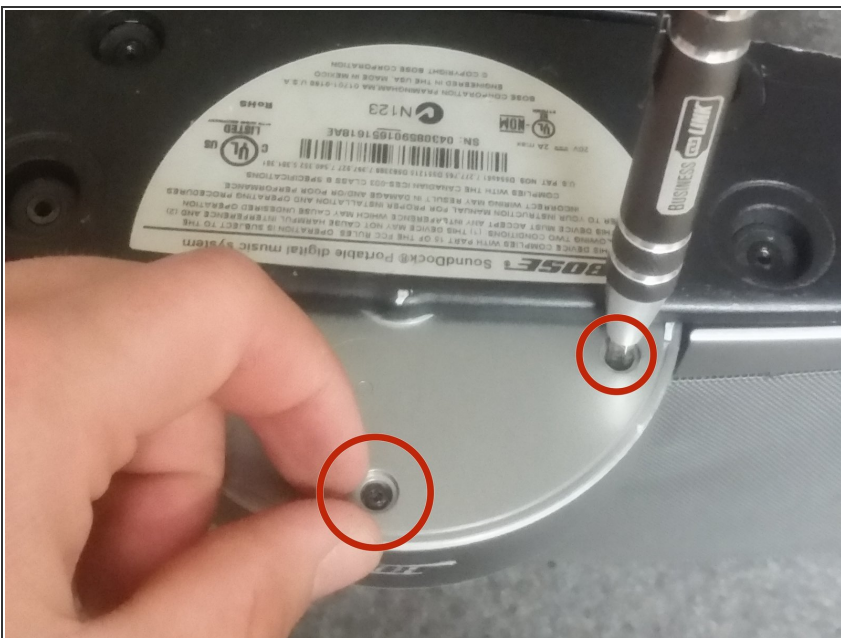
- Use a plastic scraper to remove the rubber gasket from the bottom of speaker system and set it aside.

### Step 3



- Use a standard sized Phillips Screwdriver to remove the four screws on the bottom of the speaker system.

### Step 4



- Using a smaller flat head screw driver, unscrew the semi-circle plate from bottom to expose the motherboard.
- ⚠ Once the components are unscrewed, the plastic dock frame may fall out.



## Step 5



- Gently pull both ribbon cables out of the motherboard.

## Step 6



- Replace it with new motherboard by plugging in the thinner wire into the small slot, and the larger wire into the wider slot.
- Reverse steps 1 through 4 to reassemble dock.

To reassemble your device, follow these instructions in reverse order.