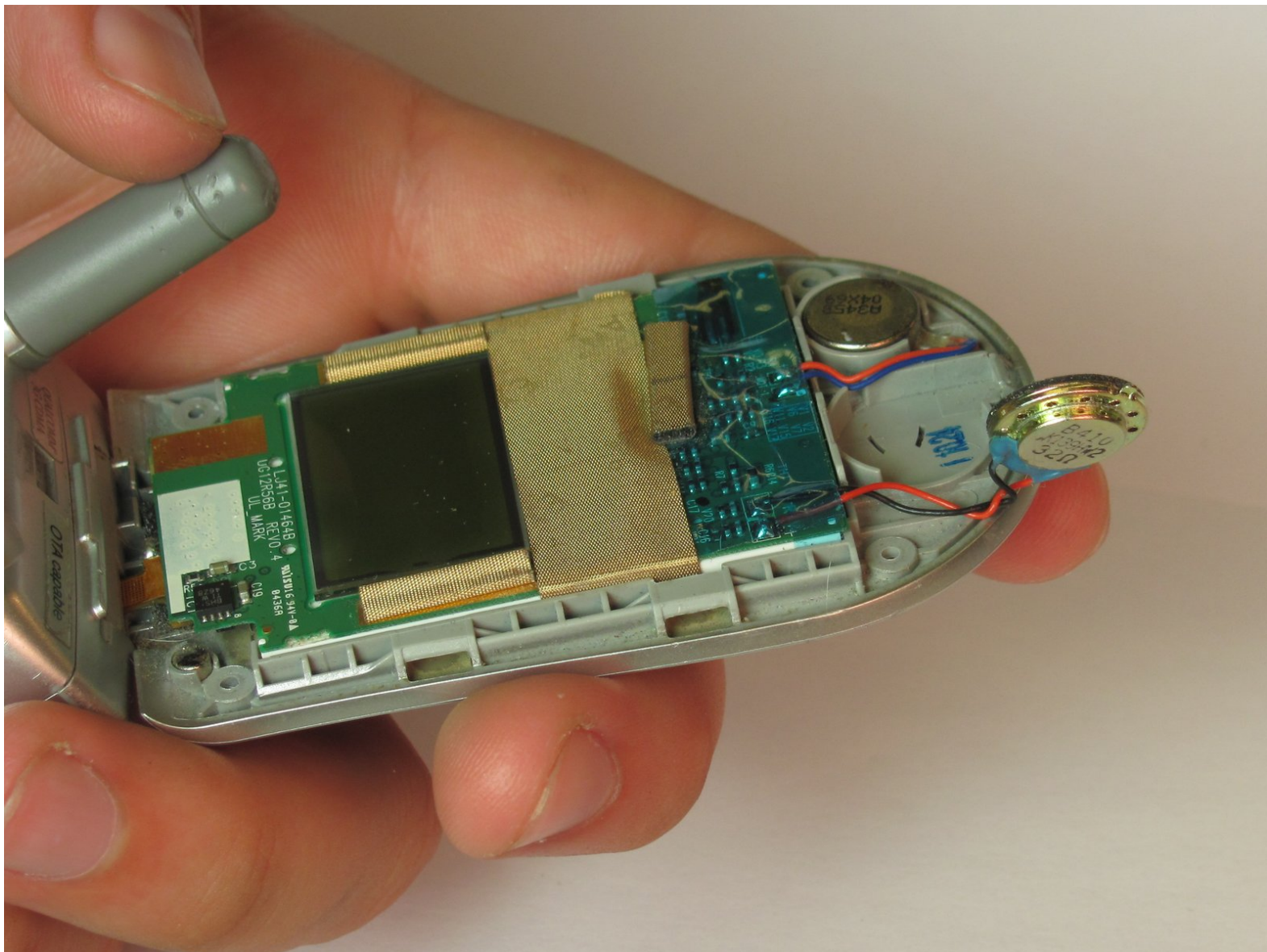




Speaker Duplicate Guide

Written By: iDeleted



INTRODUCTION

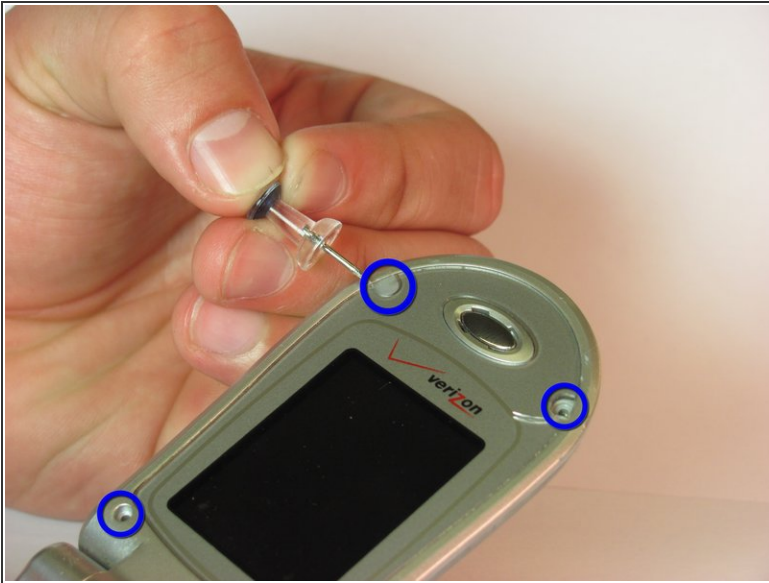
This guide is for replacing the speaker in a LG VX4500 cell phone.



TOOLS:

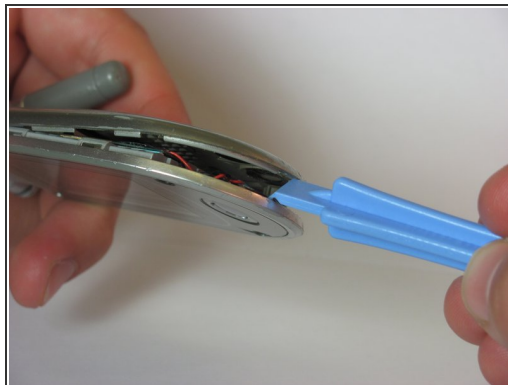
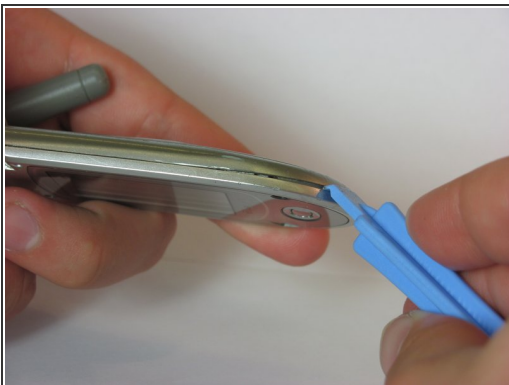
- [Push Pin](#) (1)
 - [Phillips #0 Screwdriver](#) (1)
 - [iFixit Opening Tools](#) (1)
-

Step 1 — Speaker



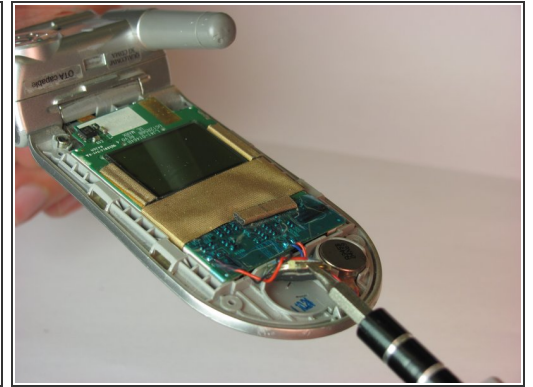
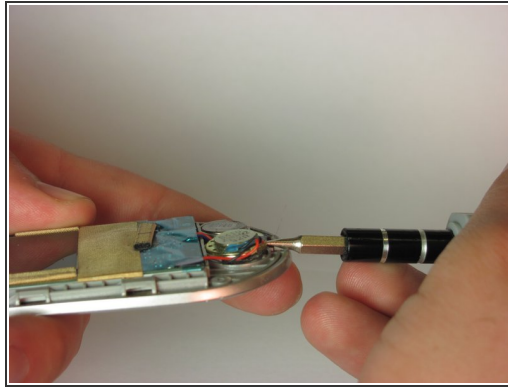
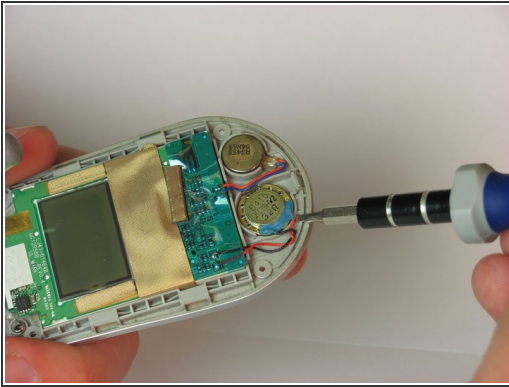
- Remove grey rubber caps from the four corners of the internal screen.
- Remove the four 1.3 mm screws, which are directly underneath the grey caps, with a Phillips head screwdriver.

Step 2



- Run a pry bar along the seam of the edge of the phone to separate the top screen casing.
- Work the bar around the edge until the entire top section with the LG logo is removed.

Step 3



- With a flathead screwdriver, lift the speaker from the device.

To reassemble your device, follow these instructions in reverse order.