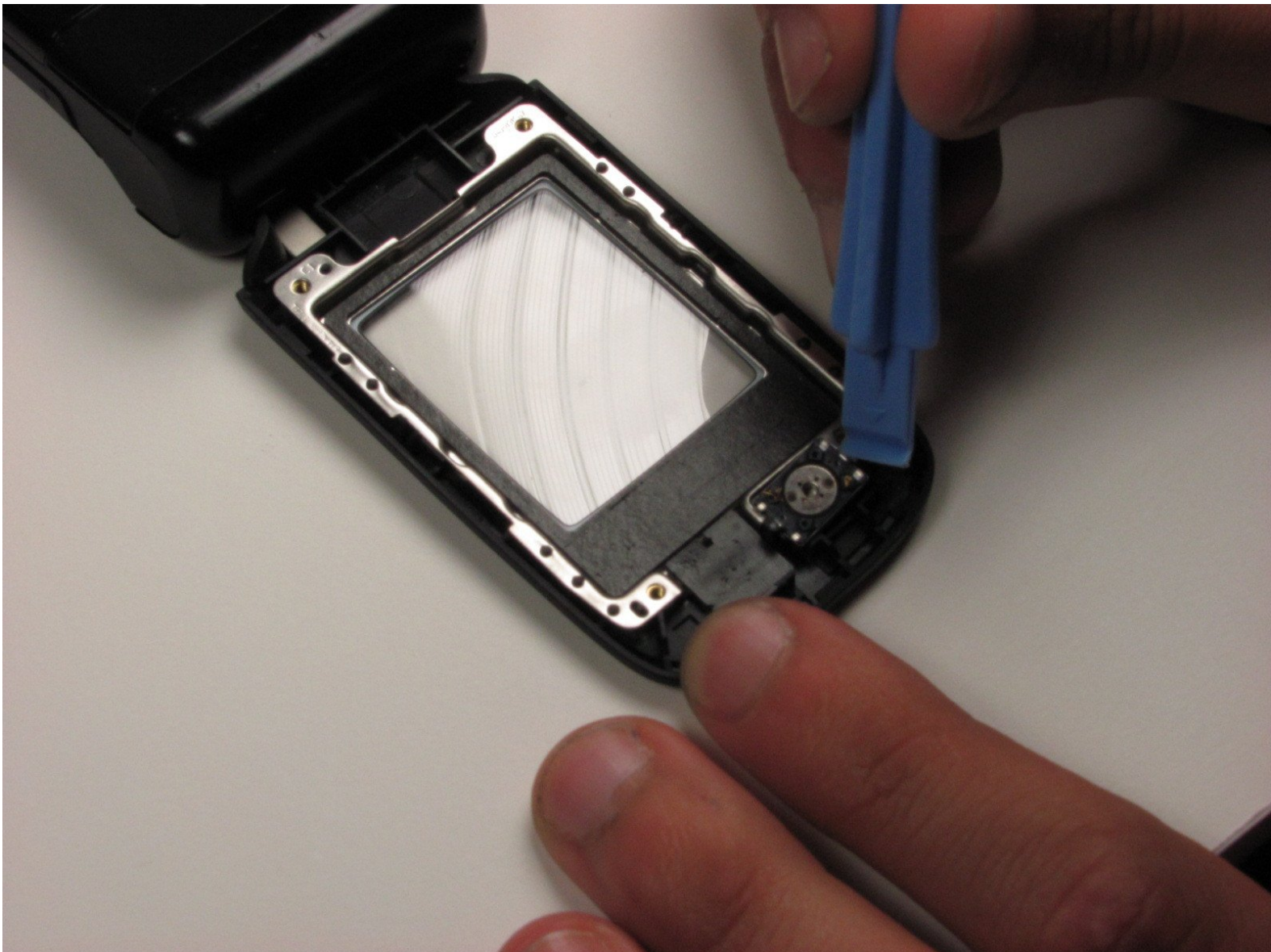




# Speaker

Disassembly process for the speaker.

Written By: Andrew



---

## INTRODUCTION

This guide give instructions on how to locate the speaker for removal and/or repair.

---



### TOOLS:

- [iFixit Opening Tools](#) (1)
  - [T6 Torx Screwdriver](#) (1)
-

## Step 1 — Battery



- Flip over the phone and then slide down the back cover with your thumb.

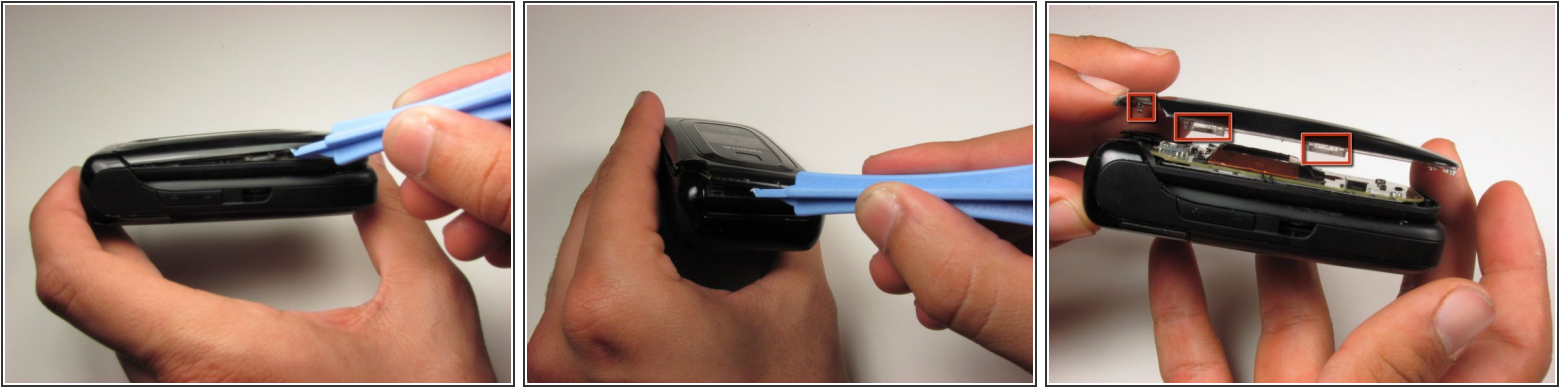
## Step 2



- Lever out the battery from the phone using your thumb.

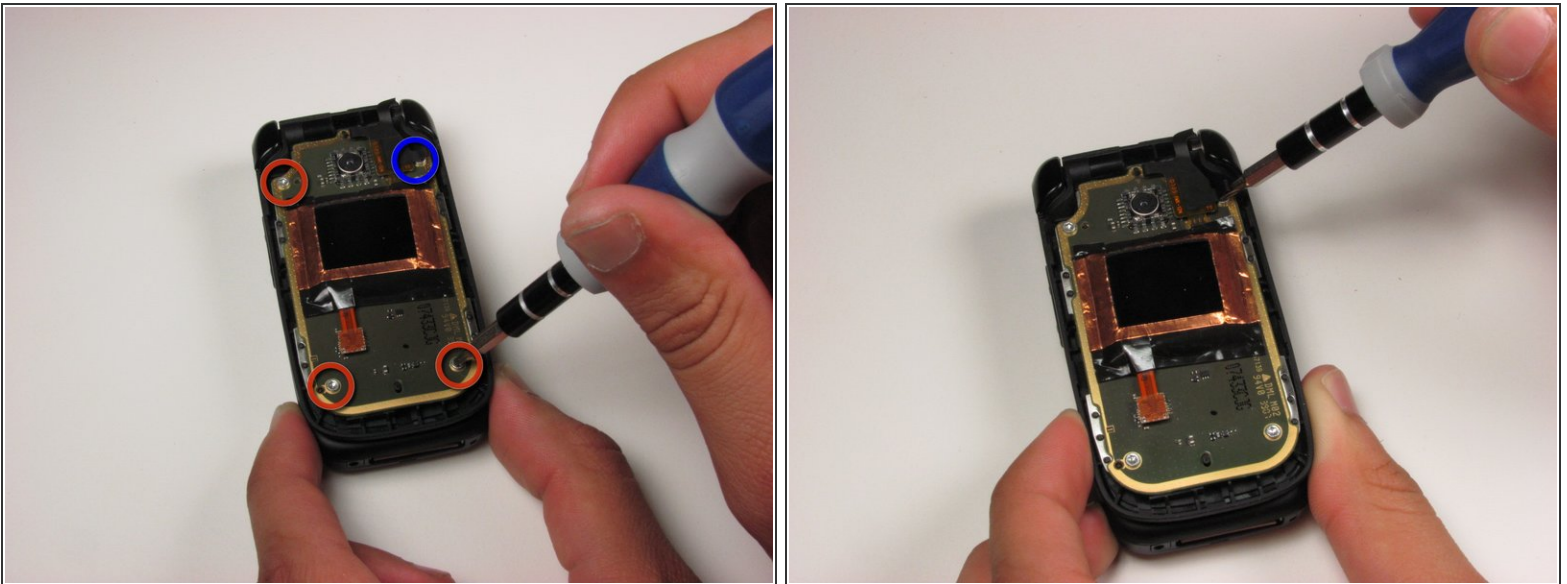


### Step 3 — Front LCD Display



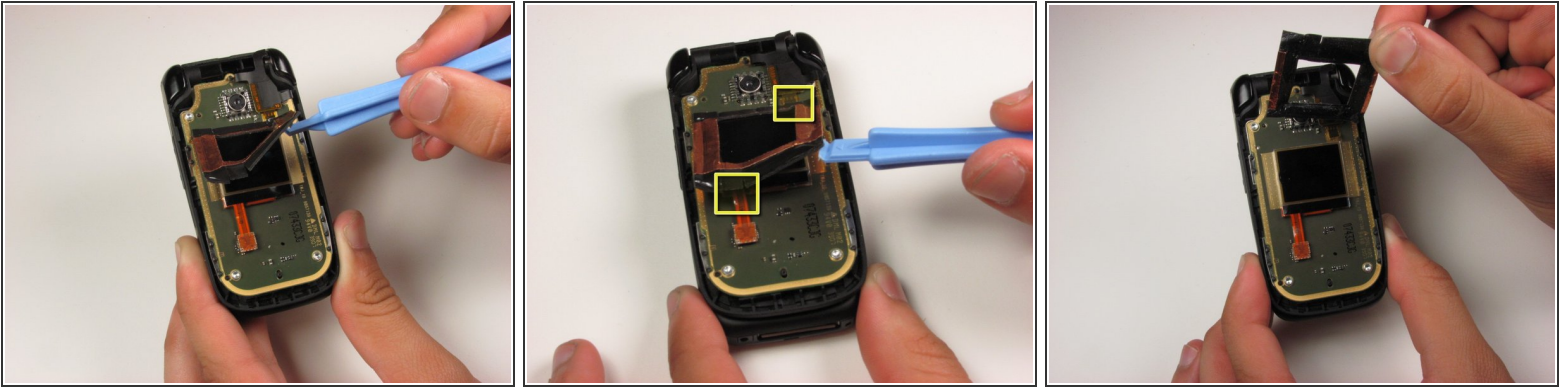
- With the phone closed, run a plastic opening tool along the seam of the top half of the phone
- Make sure to disconnect each of the five clips before proceeding (2 on each side, 1 on top)

### Step 4



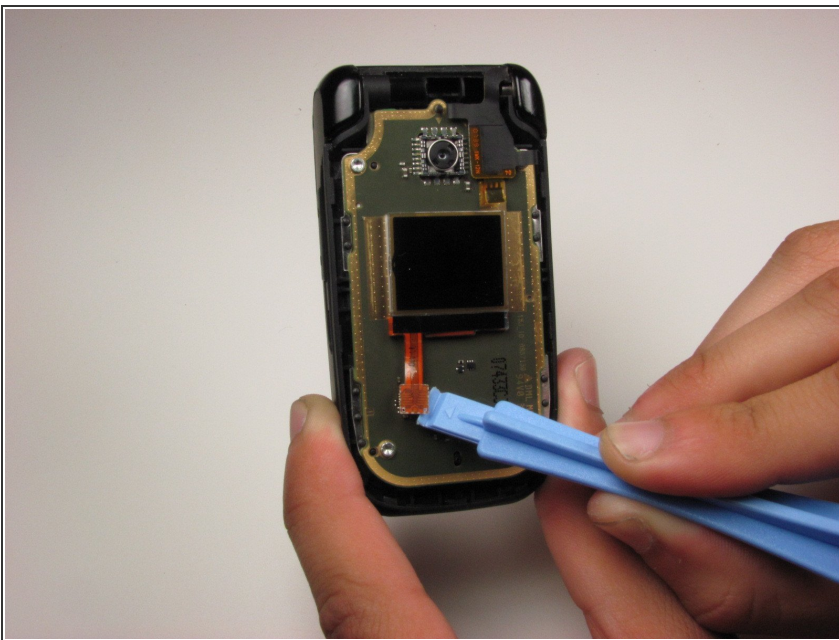
- Using T6 Torx Screwdriver, remove the four 3.16mm screws from the front panel
- Note that the fourth screw is under a fold in the ribbon cable

## Step 5



- Starting in the lower right corner, slowly start to lift the tape that is holding the front LCD and cables down
- Be careful around the two ribbon cables that are attached to the tape, they are fragile
- Lift the tape from the board

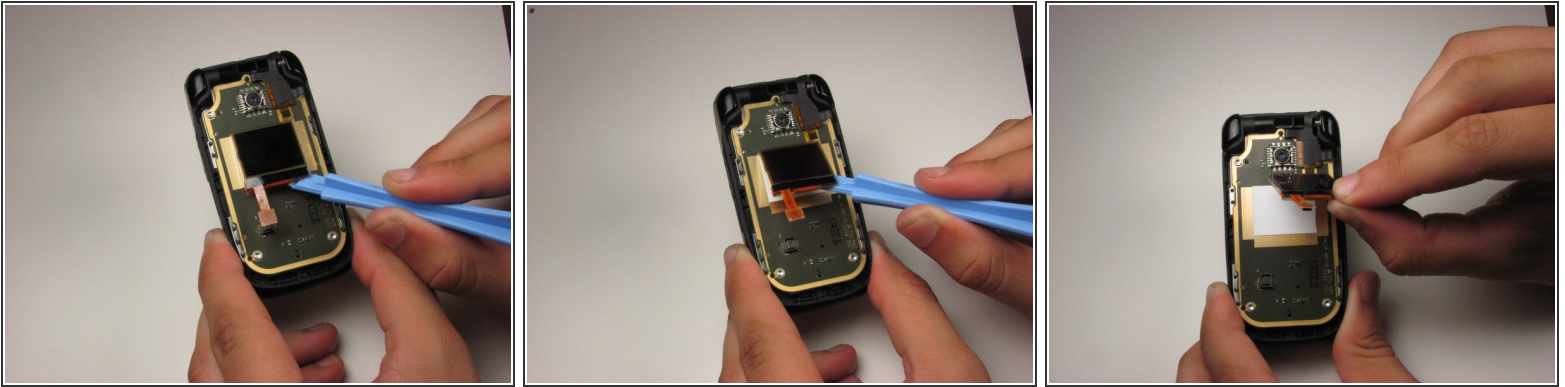
## Step 6



- Using a plastic opening tool, lift the ribbon cable connection below the front LCD

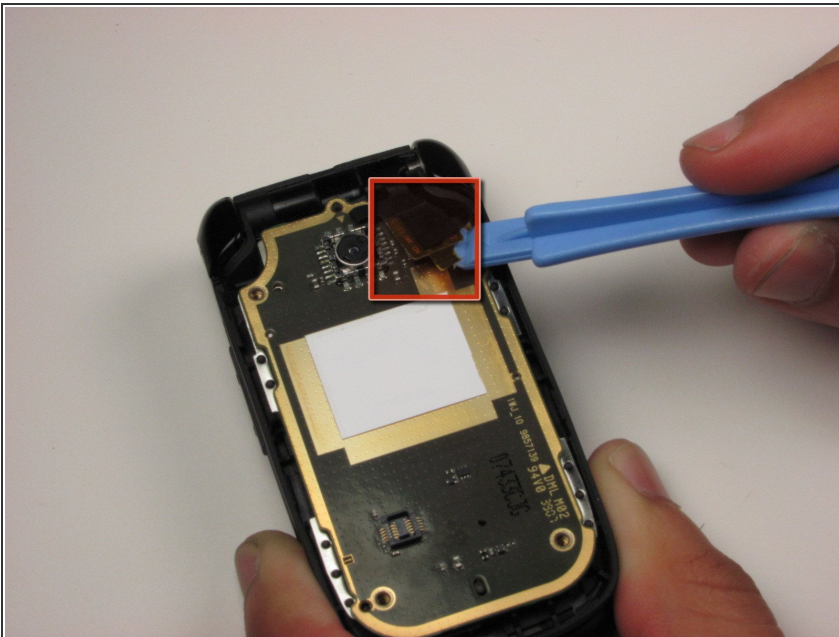


## Step 7



- Using a plastic opening tool, slowly pry up the LCD display from the bottom, releasing it from the glue holding it to the board

## Step 8 — Inner LCD Display



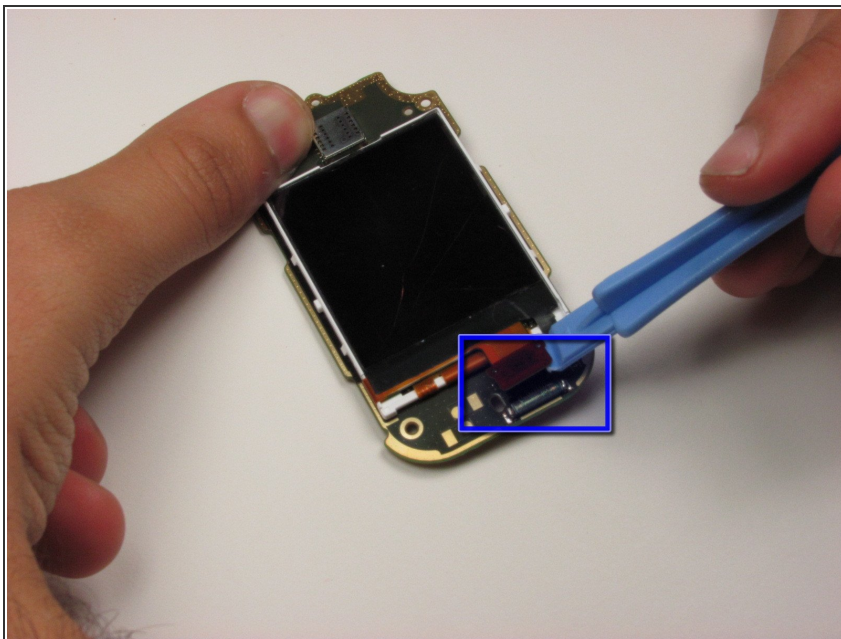
- Locate the ribbon cable connection in the upper right hand corner of the board
  - Using a plastic opening tool, lift off the cable from the board
- ⚠ Be gentle and make sure not to rip the ribbon cable

## Step 9



- Using a plastic opening tool, slowly work the board off the mounts holding it to the frame
- Flip the board over to reveal the main display

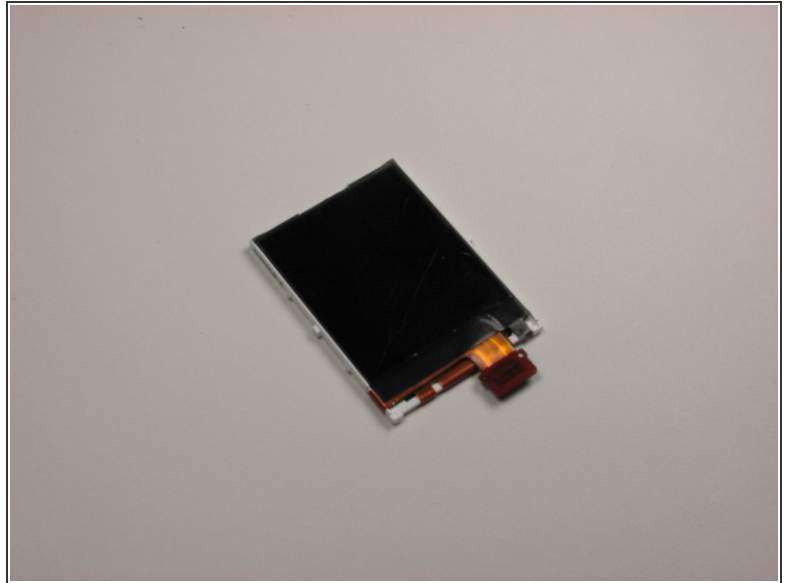
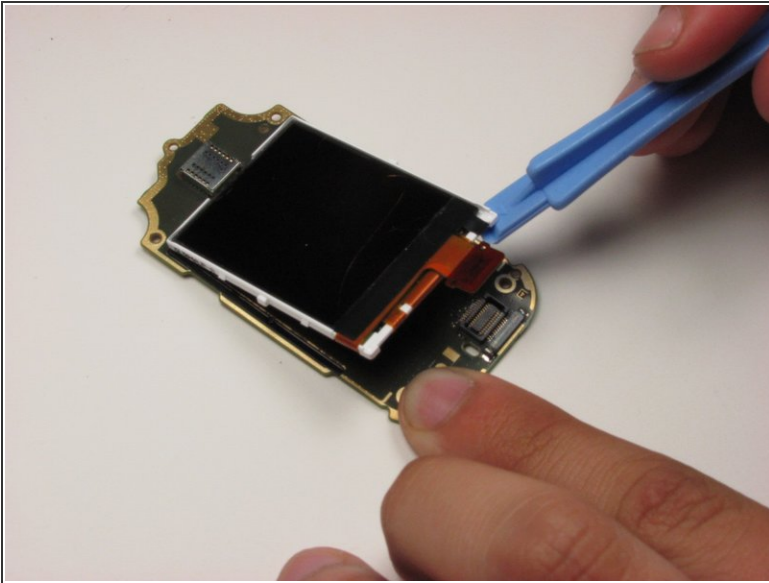
## Step 10



- Locate the ribbon cable for the main display on the bottom of the board
- Slowly lift off the ribbon connector from its housing using a plastic opening tool

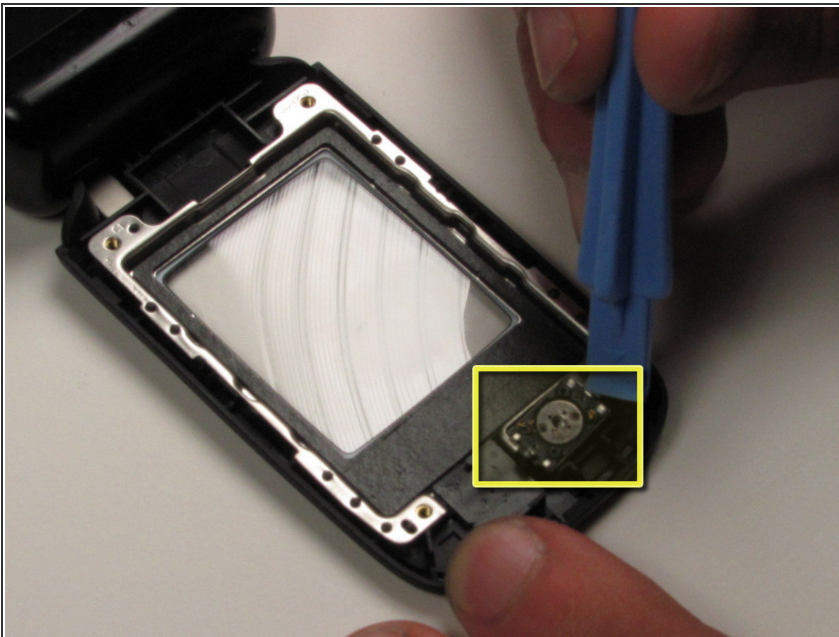


## Step 11



- Slowly wedge the plastic opening tool under the bottom of the main display
- Separate the display from the glue lifting it off the board

## Step 12 — Speaker



- Using a case opening tool, gently pry the speaker in the bottom corner from the glue from right to left until it pops out.



To reassemble your device, follow these instructions in reverse order.