



# Speed Switch

How to replace a damaged or jammed speed switch.

Written By: Dalton Johnson



---

## INTRODUCTION

The purpose of this guide to provide simple and straight-forward instruction on replacing a damaged or jammed speed switch.

---

### TOOLS:

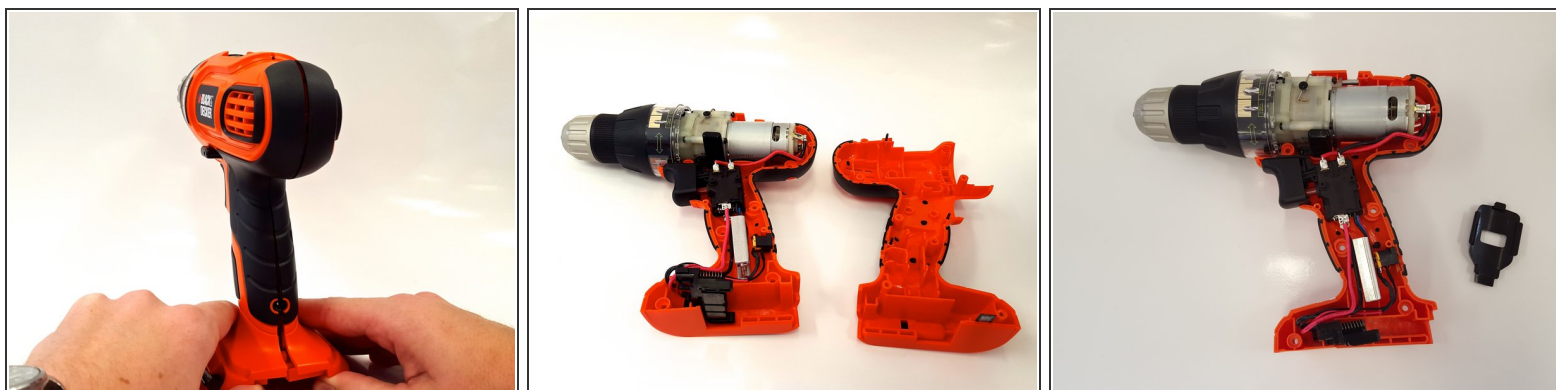
- [Phillips #2 Screwdriver](#) (1)
-

## Step 1 — Switch



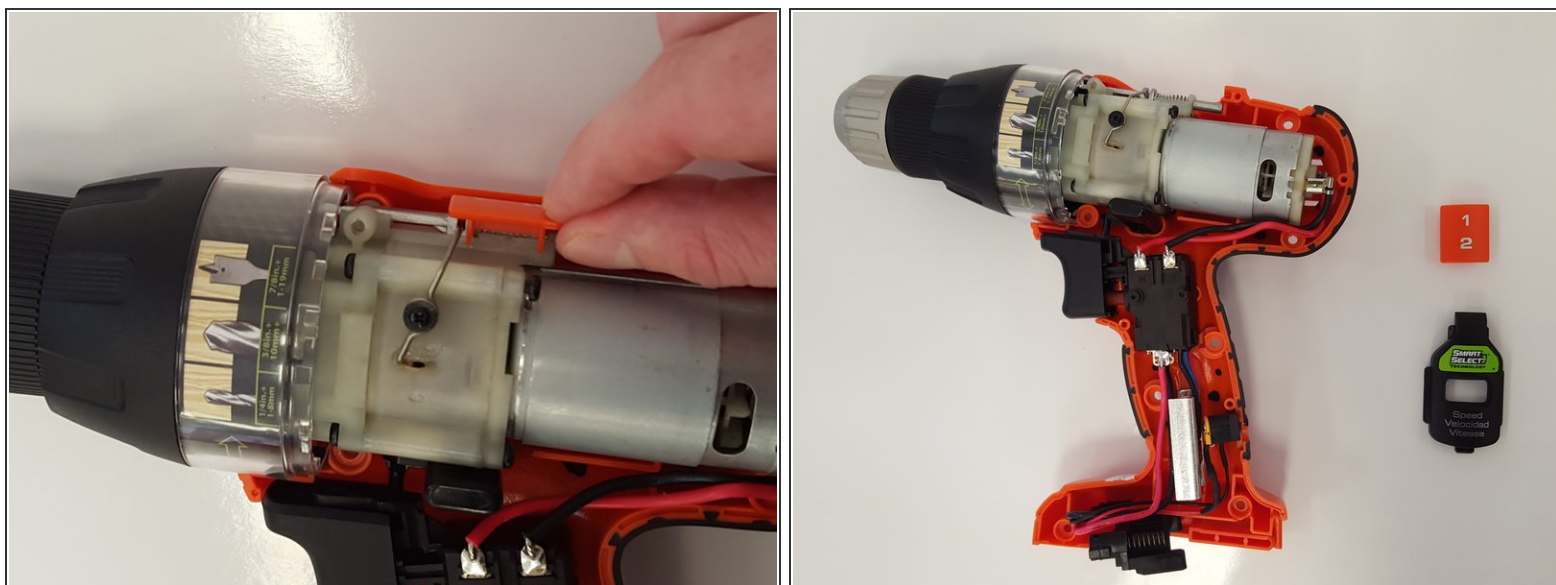
- Use a phillips head screwdriver to unscrew the following 8 screws:
  - One 24mm Phillips screw
  - Six 16mm Phillips screws
  - One 9mm Phillips screw
- Turn the drill to the other side and unscrew the marked screw using the same phillips head screwdriver. Place it with the other removed screws.
- ⓘ Keep all screws organized on a magnetic mat after removal.

## Step 2



- Carefully remove the plastic drill casing by pulling it apart.
- i** When separating the drill casing, the black plastic speed switch covering will be removed from the drill automatically.

## Step 3



- Gently remove the orange plastic speed switch from the drill. It is located right above the motor.

To reassemble your device, follow these instructions in reverse order.