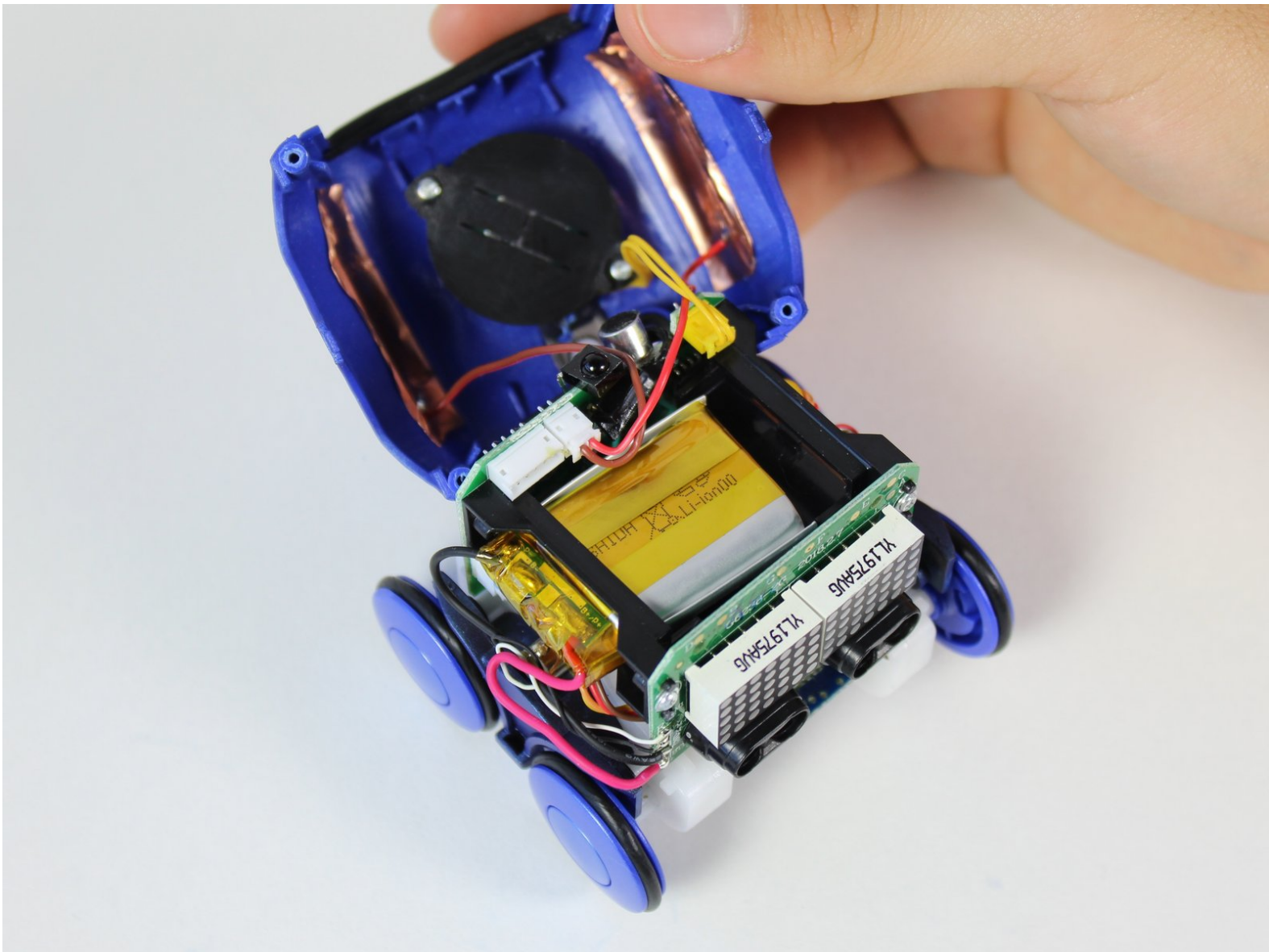




# Spin Master Boxer Robot Battery Replacement

If you need to replace the battery inside of the Spin Master Boxer robot, follow this replacement guide.

Written By: Lauren Roide



---

## INTRODUCTION

If Robot's internal battery does not hold a charge, follow this guide to replace the battery. You will need a Size 00 Philips Screwdriver to complete replacement guide.



### TOOLS:

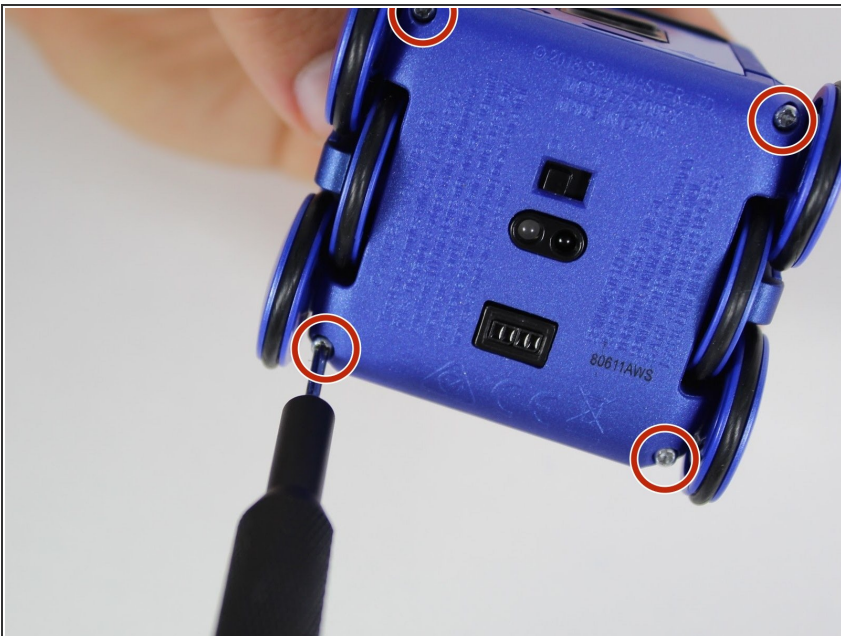
- [Phillips #00 Screwdriver](#) (1)
-

## Step 1 — Robot Screen



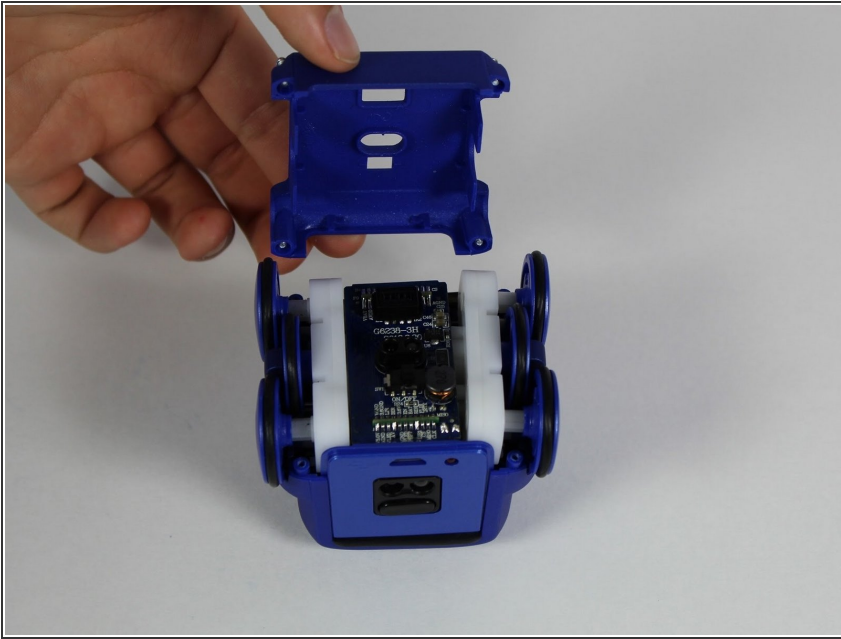
- Set Spin Master Boxer on your workspace so that the bottom panel faces upwards.

## Step 2



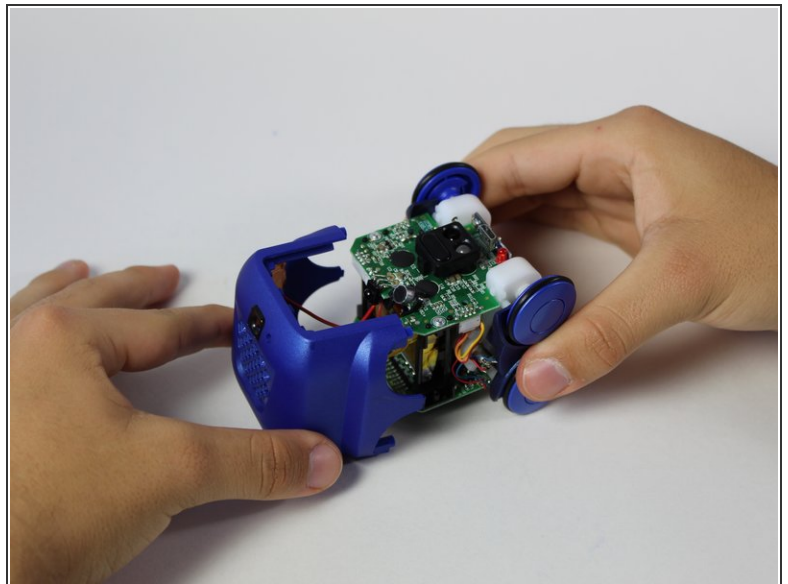
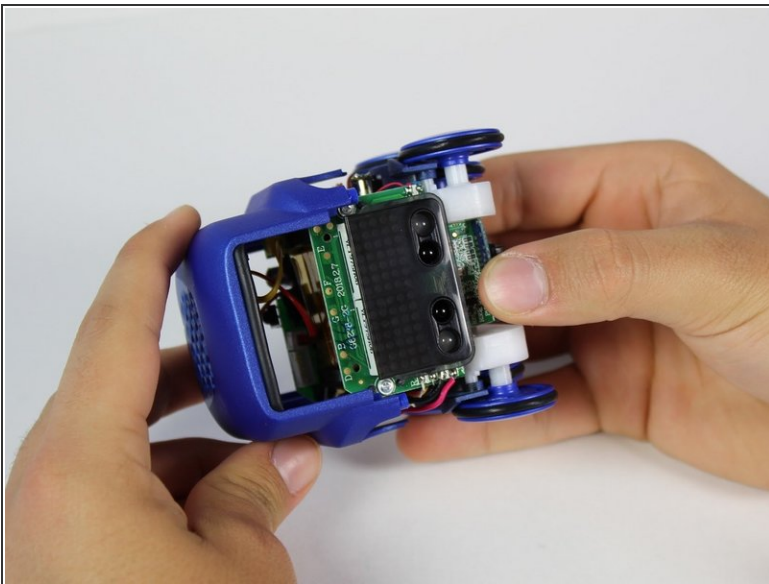
- Using a Phillips #00 screw driver, unscrew the four 4mm screws in each corner of the bottom panel.

### Step 3



- Carefully remove the bottom panel of the Spin Master Boxer by lifting up, away from the main body of robot.

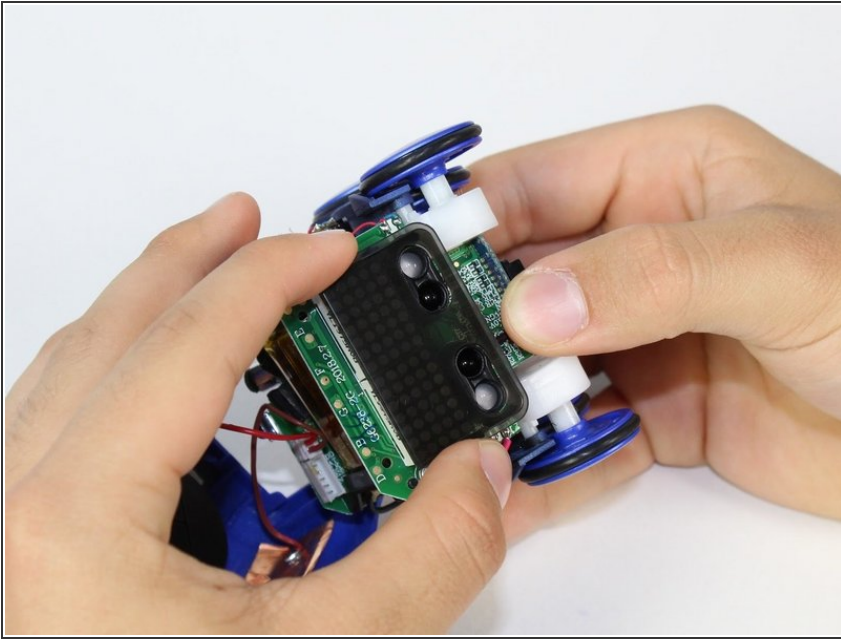
### Step 4



- While holding onto the axels of the wheels, gently pull the top panel of the robot away from its body.
- ⓘ Be aware when removing the panel that multiple wires connect it to the body of the Spin Master Boxer.

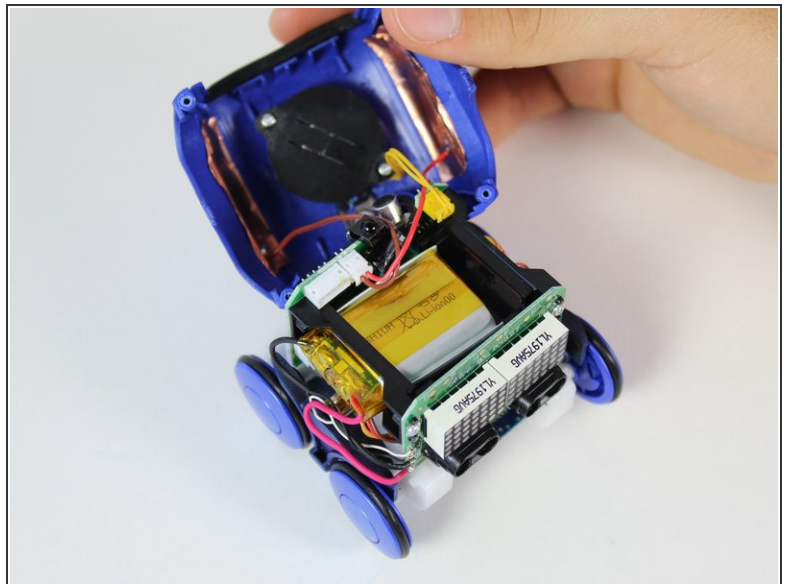
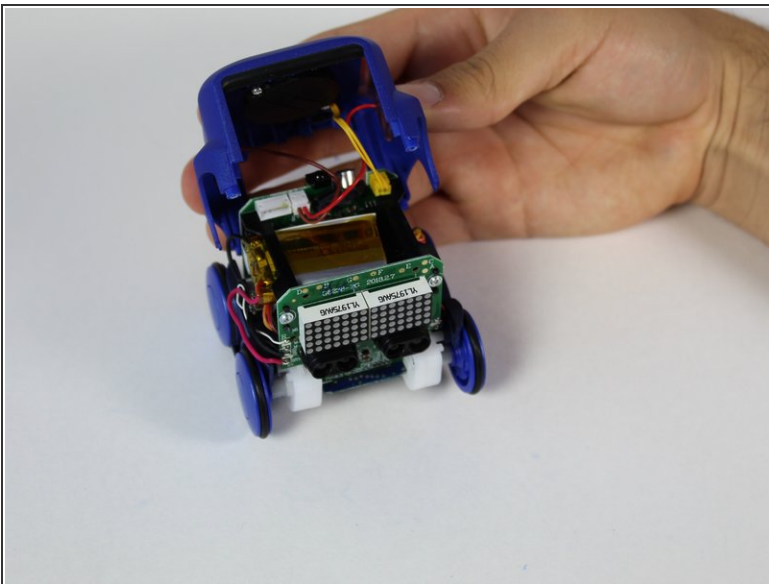


## Step 5



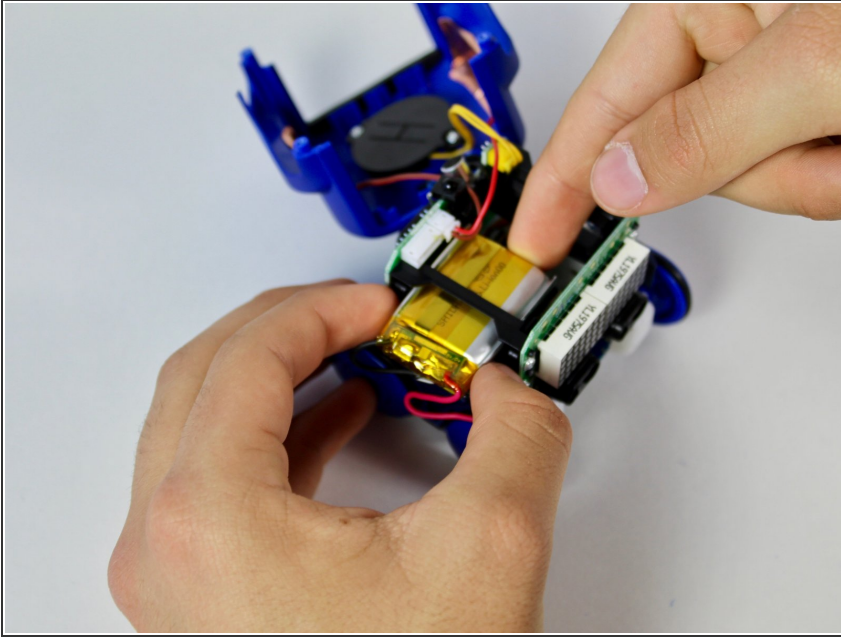
- Remove the plastic screen from the body of the robot. It should come off easily as it is not attached by anything.

## Step 6 — Robot Battery



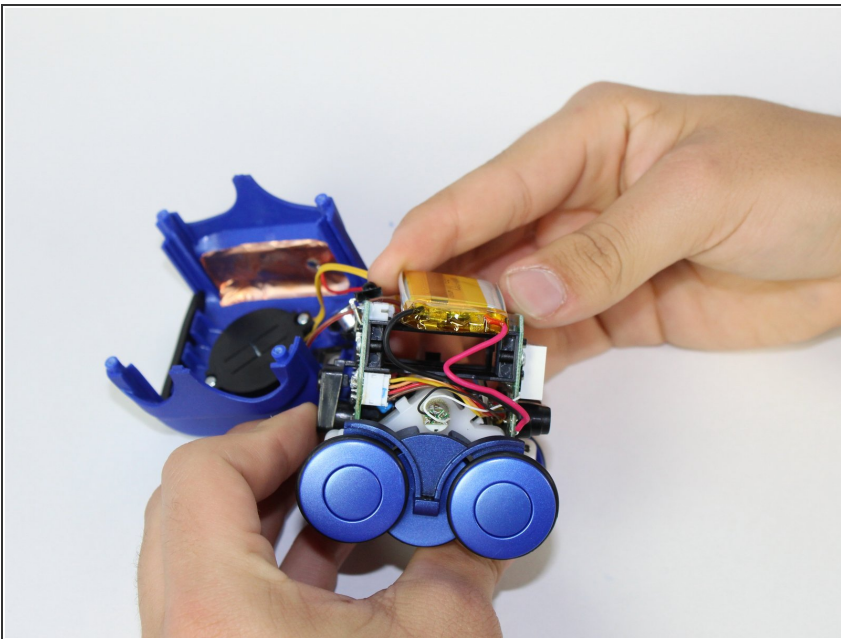
- Lift the top panel away from the main body of the robot to expose the yellow battery.

## Step 7




- Insert index finger in between battery and plastic shell of robot, and push battery out of the battery holder toward the wire.

## Step 8



- Now that the battery is completely removed, additional efforts, like soldering the wires off, must be taken to replace the battery.

 [How To Solder and Desolder Connections](#)

To reassemble your device, follow these instructions in reverse order.