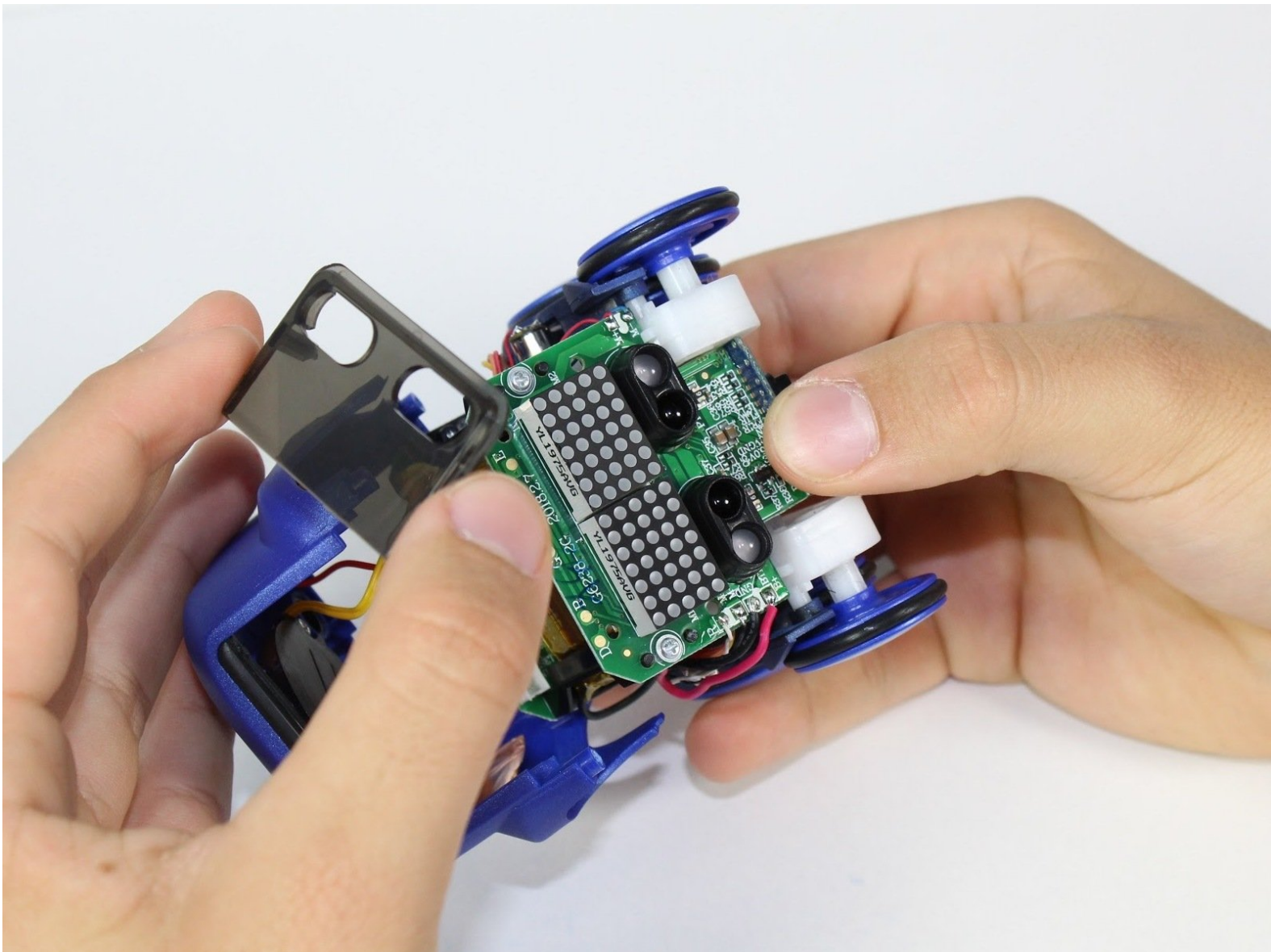




# Spin Master Boxer Robot Screen Replacement

If screen is cracked, follow this guide to replace it in your Spin Master Boxer.

Written By: Lauren Roide



---

## INTRODUCTION

If Spin Master Boxer's screen is cracked, follow this step by step guide to replace it. You will need a Size 00 Philips Screwdriver to complete guide.



### TOOLS:

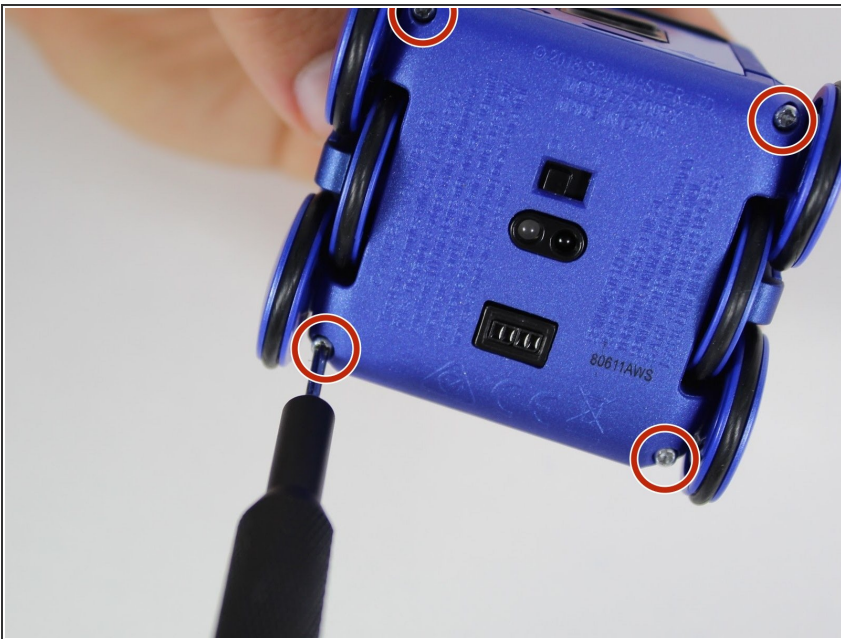
- [Phillips #00 Screwdriver](#) (1)
-

## Step 1 — Robot Screen



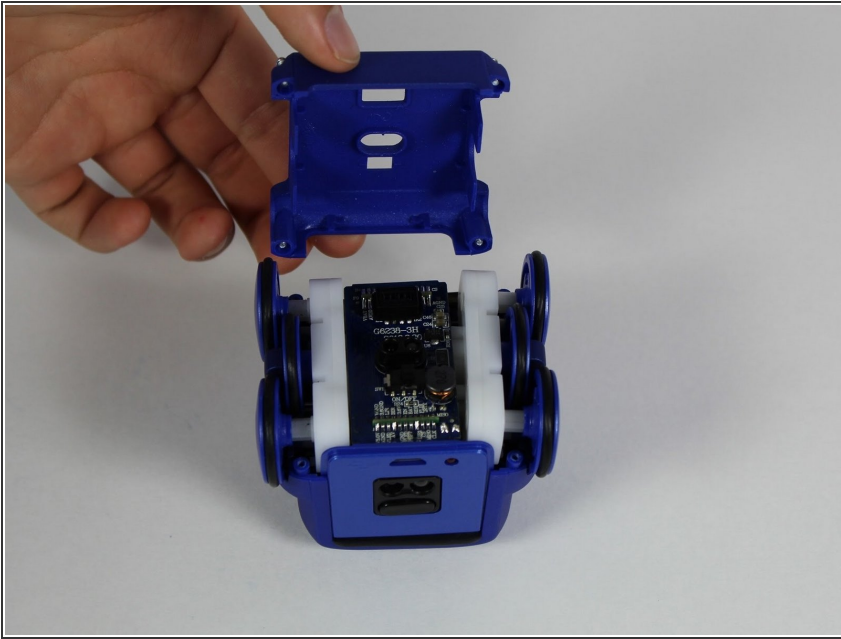
- Set Spin Master Boxer on your workspace so that the bottom panel faces upwards.

## Step 2



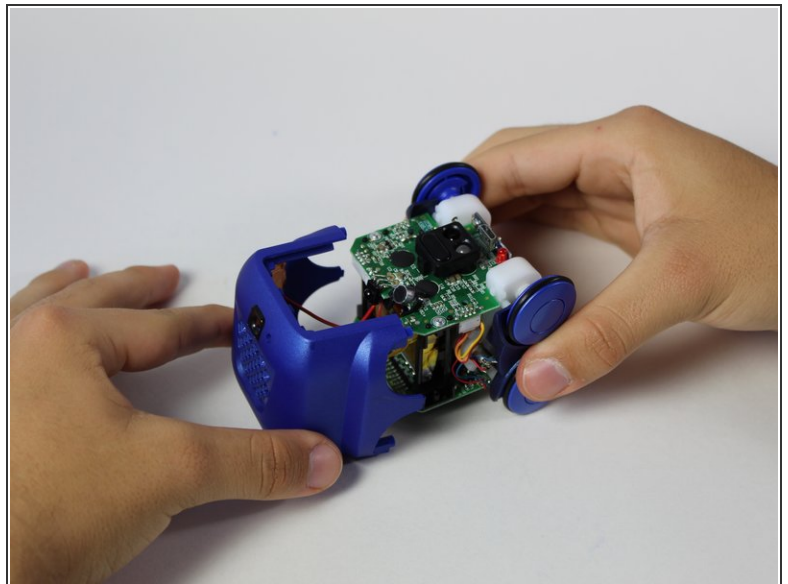
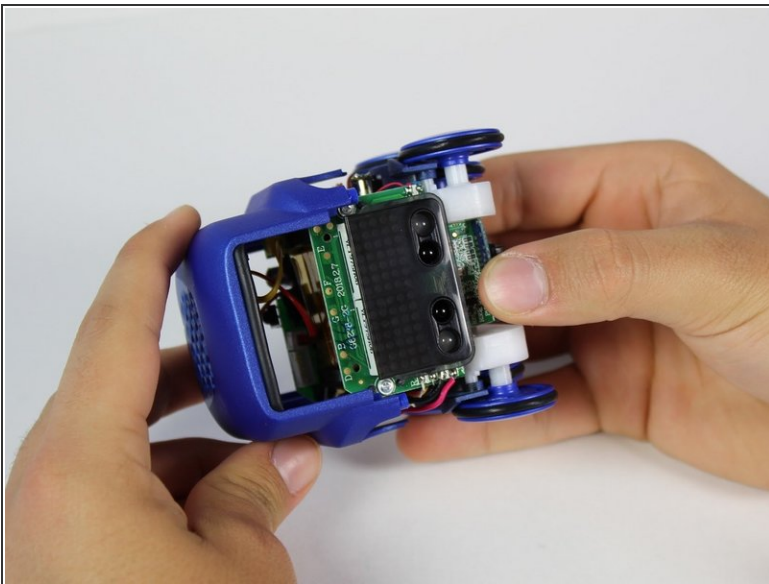
- Using a Phillips #00 screw driver, unscrew the four 4mm screws in each corner of the bottom panel.

### Step 3



- Carefully remove the bottom panel of the Spin Master Boxer by lifting up, away from the main body of robot.

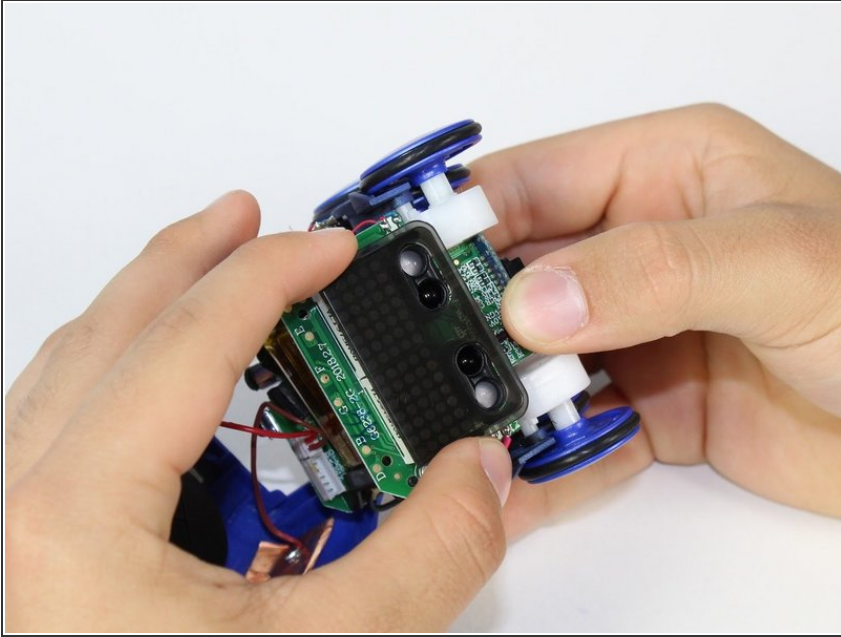
### Step 4



- While holding onto the axels of the wheels, gently pull the top panel of the robot away from its body.
- ⓘ Be aware when removing the panel that multiple wires connect it to the body of the Spin Master Boxer.



## Step 5



- Remove the plastic screen from the body of the robot. It should come off easily as it is not attached by anything.

To reassemble your device, follow these instructions in reverse order.